

# Miami-Dade Aviation Department



## Rates, Fees & Charges

FY 2015-16

Finance & Strategy  
Group:

Financial Planning &  
Performance Analysis  
Division



**MIAMI-DADE AVIATION DEPARTMENT  
RATES, FEES AND CHARGES FOR FISCAL YEAR 2016  
TABLE OF CONTENTS**

<b>1.</b>	<b>SUMMARY .....</b>	<b>1</b>
	Summary of Airline Charges .....	2
	Airline Cost per Enplaned Passenger.....	3
	Airline Rates and Charges Methodology .....	4
	Residual Landing Fee.....	4
	Terminal Rentals .....	5
	Terminal User Fees .....	6
<b>2.</b>	<b>AIRSIDE.....</b>	<b>7</b>
	Landing Fee Calculation .....	8
	Aircraft Parking Fees .....	9
	Derelict or Non-Operating Aircraft.....	10
	New Fees for Charter Airlines .....	10
	VIP Ramp Escort .....	10
	Handling by FBO .....	11
	Handling by Authorized Ground Handler .....	11
	Ground Support Charges.....	12
	Pre-Conditioned Air Fee .....	12
	MDAD Loading Bridge Fee.....	12
	MDAD SafeGate Loading Bridge Fee .....	12
	MDAD Stair Truck Usage Fee.....	12
	Aircraft Escort Fee .....	12
	Delivery Vehicles or Non-Passenger Vehicle Escort Fee .....	12
	Vehicle Escort for VIP Pickup at General Aviation Aircraft.....	12
	Fuel Stop Fees .....	12
	General Aviation Center (GAC) Facility Fee .....	12
	Activity Fees by Aircraft Type .....	12a-e
<b>3.</b>	<b>TERMINAL .....</b>	<b>13</b>
	Airline Activity Based Fees .....	14
	Concourse Use Fee.....	14
	Baggage Claim Fee .....	14
	Screening Use Fee.....	14
	International Facilities Use Fee.....	14
	Terminal Rental Rates .....	15
	Average (Class III) Terminal Rental Rates .....	15
	Weighted Rental Rates.....	15
	CUTE Rates (Common Use Terminal Equipment) .....	16
	CUTE Gate Rates .....	16
	Ticket Counter Usage Fee .....	16
	CUTE Dynamic Signage (Back-wall Display) .....	16
	CUTE Back-office / Operations / Educational Equipment .....	16
	Manual CUTE Ticket Counter Rates .....	16
	Miscellaneous CUTE Charges .....	17
	CUTE Charge Based on Departing Seat .....	17
	CUSS Charges (Common Use Self-Service) .....	17
	CCTV Charges (Closed-Circuit Television).....	17
	CUTE Rate Summary and Prior Year Comparison .....	18

**FINAL**

## TABLE OF CONTENTS (continued)

<b>4.</b>	<b>LANDSIDE</b> .....	19
	Public and Employee Parking.....	20
	Public Parking.....	20
	Standard Rates.....	20
	Valet Parking.....	20
	Parking Space Reservation.....	20
	Employee Parking.....	21
	Employee Parking Decals.....	21
	Motorcycle Parking Decals.....	21
	Long-Term Parking Magnetic Cards.....	21
	Contractor Parking.....	21
	Towed Vehicles.....	21
	Ground Transportation Fees.....	22
	Mobile Food Truck Vendor Fee.....	23
	Taxicab Operation Fee.....	23
	Ground Transportation Annual Permit Renewal Fee.....	23
	Ground Transportation Permit Late Renewal Fee.....	23
	Authority to Revise or Adjust Building Rental Rates.....	23
	Land Rental and Apron Paving Rates.....	24
	Building Rental Rates (Miami International Airport).....	25
	Land Zone Map (Zones 1 – 4, 7).....	32
<b>5.</b>	<b>FUEL FARM</b> .....	33
	Fuel Flowage Fees and Calculation Explanation.....	34
<b>6.</b>	<b>GENERAL AVIATION</b> .....	35
	General Aviation Airport Fees and Charges.....	36
	Operational Closure Fee.....	36
	Aerial Advertising Fee.....	36
	Aircraft Parking at General Aviation Airports.....	36
	Conference Room Rental Fee (Miami Executive and Opa-Locka Airports).....	36
	Off-Road Vehicle Parking Fee at Training & Transition Airport.....	36
	Fuel Flowage Fee at General Aviation Airports.....	36
	Training & Transition Approach Fee.....	36
	AOA (Aircraft Operating Area) Decal for Commercial Vehicles and Equipment.....	36
	AOA Decal for Privately Owned Vehicles and Equipment.....	36
	AOA Decal Replacement Fee for Vehicles and Equipment.....	36
	AOA Decal Late Application Fee.....	36, 45
	Building Rental Rates (Opa-Locka Executive Airport - OPL).....	37
	Building Rental Rates (Miami Executive Airport - TMB).....	38
	Building Rental Rates (Homestead General Aviation Airport – X51).....	39

## TABLE OF CONTENTS (continued)

<b>7.</b>	<b>TELECOMMUNICATIONS</b> .....	40
	Telecommunication Fees .....	41
	Wireless Service Providers .....	41
	Cable Television (CATV) Recovery Fee .....	41
	Coaxial Cable Recovery Fees .....	41
	Wireless Data Port with Internet Access Fee .....	41
	Wireless Network Access Fee for Multiple Users and Proprietary Tenants .....	41
	Offsite FIDS Rate.....	41
	Network Port Costs.....	41
	Equipment Rental Costs .....	41
	STS (Shared Tenant Services) Fees .....	42
<b>8.</b>	<b>MISCELLANEOUS</b> .....	43
	Miscellaneous Fees and Charges .....	44
	Opportunity Fee for Third Party Vendors .....	44
	Penalty Fee for Employing Unpermitted Service Vendors .....	44
	Miscellaneous Air Carrier Fees.....	44
	Disruptive Passenger Fee.....	44
	Ground Service Equipment (GSE) Impound Fee .....	44
	Aircraft Handling Chock Fee.....	44
	Employee (MDAD Tenant) ID Badge Fees .....	45
	Employee Identification Badge Fee.....	45
	Lost or Unaccounted Employee ID Badge Fee .....	45
	Failure to Notify and Return Terminated Employee ID Badge Fee .....	45
	TSA 5% Rule Violation Fee .....	45
	Fingerprinting Fee .....	45
	Airside Vehicle Decal, Training Decal and Decal/Permit Replacement Fees .....	45
	AOA Decals.....	45
	AOA Decals (Lost or Unaccounted).....	45
	AOA Driver Training .....	45
	AOA Movement Area Training .....	45
	Loading Bridge Training .....	45
	Decal/Permit Replacement Fee.....	45
	AOA Decal Late Application Fee.....	36, 45
	Into-Plane Fueling Recommended Fees (Non-Commercial Aircraft) .....	45
	Airline VIP Clubs.....	45
	Opportunity Fee .....	45
	Concession Fee .....	45
	Letter of Determination Fee (Height Restriction) .....	46
	Letter of Determination Fee (Land Use Zoning Analysis).....	46
	MDAD Technical Reviews and Written Comments.....	46
	Cell Towers and Other Structures Under 200 Feet Above Mean Sea Level .....	47
	Request for Written Comments .....	47
	Request for Written Comments – Revised Plans .....	47
	Development Impact Committee or Equivalent Large-Scale Hearing Application. ....	47
	Permissible Crane (or Equipment) Height Determination.....	47
	Permissible Crane (or Equipment) Height Determination–Additional Coordinates. ....	47
	Request for New Letter of Determination Due to Expiration.....	47
	Passenger Facility Charge (PFC) .....	47

## TABLE OF CONTENTS (continued)

Other Fees .....	47
Auditorium Use Fee (Miami International Airport) .....	47
Conference Room Use Fee (Miami International Airport – Non Terminal) .....	47
Consular Lounge Annual Membership .....	47
Consular Lounge Rental Fee for Non-Member Organizations .....	47
Late Revenue Reporting Fee .....	47
Wheelchair Lift Fee .....	47
Security Violation Fee .....	47
Permit Application Fee for Provider of Goods and Services .....	47
Permit Extension Fee .....	48
Aircraft Demolition Fee .....	48
Baggage or Property Impound Fee .....	48
Background Check Fee .....	48
Animal Inspection Facility User Fees .....	48
Average Electrical Consumption per Kilowatt Hour .....	48
Airside Enforcement Processing Fee .....	48
Violation Fees for Airport Concessionaires or Tenants .....	48
Violation of Permitted Use of a Location .....	48
Failure to Maintain Required Hours of Operation .....	48
Unauthorized Advertising .....	48
Failure to Maintain Premises in a Clean State .....	48
Failure to Maintain Pricing or Conduct Surveys .....	48
Installation of Unapproved Items .....	48
Violation of Other Terms and Conditions .....	48

## APPENDICES

<b>Appendix A</b> .....	49
Terminal Rental Calculation—Allocation of Expenses by Cost Center .....	A-1 to A-6
<b>Appendix B</b> .....	50
CUTE / CUSS Exhibits .....	B-1 to B-6
<b>Appendix C</b> .....	51
Airport Traffic Report .....	C-1

SUMMARY TAB



**SUMMARY OF AIRLINE CHARGES  
MIAMI INTERNATIONAL AIRPORT  
FY 2015-16**

Rate Type	Actual	Actual	Adopted	Variance	
	FY 2013-14	FY 2014-15	FY 2015-16	Adopted vs. FY 2015	
				Amount	Percentage
AIRFIELD					
Landing Fees	\$1.75	\$1.58	\$1.68	\$0.10	6.2%
Loading Bridge	\$35.00	\$35.00	\$35.00	\$0.00	0.0%
Preconditioned Air:					
Narrow-body	\$18.34	\$18.34	\$18.34	\$0.00	0.0%
Wide-body	40.58	40.58	40.58	0.00	0.0%
Jumbo-body	54.15	54.15	54.15	0.00	0.0%
TERMINAL					
Domestic Arriving Seat					
Concourse	\$4.32	\$4.32	\$4.27	(\$0.05)	-1.2%
Baggage Claim	1.47	1.47	1.49	0.02	1.4%
	\$5.79	\$5.79	\$5.76	(\$0.03)	-0.5%
Domestic Departing Seat					
Concourse	\$4.32	\$4.32	\$4.27	(\$0.05)	-1.2%
Screening	0.49	0.46	0.43	(0.03)	-6.5%
Baggage Make-up Maintenance (1)	0.74	0.76	0.69	(0.07)	-9.2%
Baggage Make-up Capital (4)	0.39	0.37	0.37	0.00	0.0%
	\$5.94	\$5.91	\$5.76	(\$0.15)	-2.5%
International Arriving Seat					
Concourse	\$4.32	\$4.32	\$4.27	(\$0.05)	-1.2%
International Facilities	1.90	1.87	2.20	0.33	17.6%
	\$6.22	\$6.19	\$6.47	\$0.28	4.5%
International Departing Seat					
Concourse	\$4.32	\$4.32	\$4.27	(\$0.05)	-1.2%
Screening	0.49	0.46	0.43	(0.03)	-6.5%
Baggage Make-up Maintenance (1)	0.74	0.76	0.69	(0.07)	-9.2%
Baggage Make-up Capital (4)	0.39	0.37	0.37	0.00	0.0%
	\$5.94	\$5.91	\$5.76	(\$0.15)	-2.5%
Terminal Rent					
Class I	\$159.84	\$83.05	\$84.90	\$1.85	2.2%
Class II	119.88	124.58	127.35	2.77	2.2%
Class III	79.92	83.05	84.90	1.85	2.2%
Class IV	39.96	41.53	42.45	0.92	2.2%
Class V	19.98	20.76	21.23	0.47	2.3%
Class VI	79.92	83.05	84.90	1.85	2.2%
CUTE Rates					
Infrastructure Fee per Departing Seat (2)	\$0.05	\$0.02	\$0.02	\$0.00	0.0%
Gate Usage Fee per Departing Seat	0.16	0.19	0.19	0.00	0.0%
CUTE Equipment Rental (3)	\$4.69	\$0.57	\$0.54	(\$0.03)	-5.3%
Class I Rental (3)	6.41	0.37	0.39	0.02	5.4%
Class IV Rental (3)	8.30	0.80	0.86	0.06	7.5%
Common Use Display (3)	0.29	0.03	0.03	0.00	0.0%
Ticket Counter Usage Fee (3)	\$19.69	\$1.77	\$1.82	\$0.05	2.8%

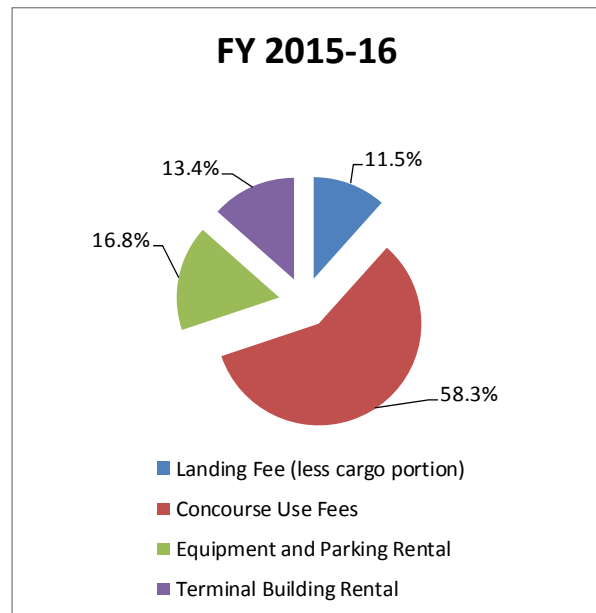
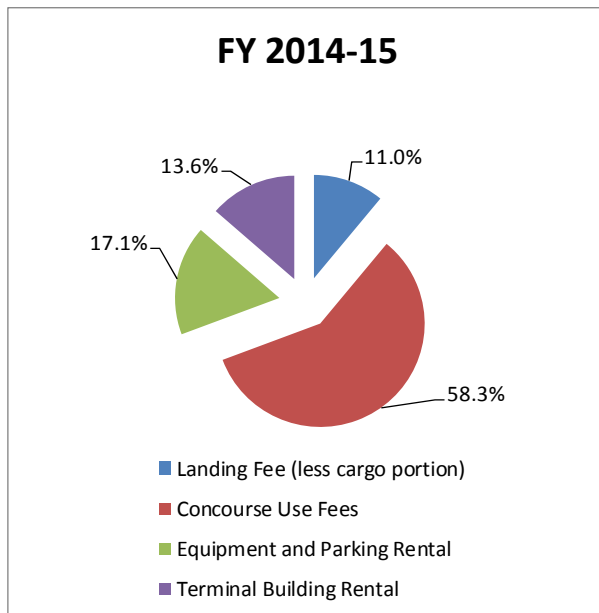
- (1) American Airlines is excluded from this charge because this airline maintains its own baggage system.
- (2) Fee is paid by all MIA passenger air carriers as an increase in the concourse use fee.
- (3) CUTE equipment rental, space rental and backwall display charges are based on departing seats effective Oct. 1, 2014.
- (4) The capital recovery portion of Baggage Make-up is charged to all airlines.

**AIRLINE COST PER ENPLANED PASSENGER**  
**Miami-Dade County Aviation Department**  
**Miami International Airport**  
**FY 2015-16**

		<b>FY 2014-15</b>	<b>FY 2015-16</b>
Landing Fee (less cargo portion)		<b>\$45,920,667</b>	<b>\$49,458,426</b>
Concourse Use Fees		<b>243,958,849</b>	<b>249,876,385</b>
Equipment and Parking Rental		<b>71,707,756</b>	<b>71,972,687</b>
Terminal Building Rental		<b>56,794,184</b>	<b>57,424,386</b>
<b>Total Airline Payments</b>	<b>[A]</b>	<b>\$418,381,456</b>	<b>\$428,731,883</b>
<b>Enplaned Passengers</b>	<b>[B]</b>	<b>20,775,000</b>	<b>21,300,000</b>
<b>Airline Cost per Enplaned Pax.</b>	<b>[A/B]</b>	<b>\$20.14</b>	<b>\$20.13</b>
<b>Airline Cost per Enplaned Pax per Traffic Engineers (a)</b>		<b>\$19.97</b>	<b>\$20.49</b>

**Notes:**

- (a) FY 2014-15 and FY 2015-16 represent the forecast airline cost per enplaned passenger contained in the Traffic Engineers report prepared by LeighFisher Inc. contained in the Aviation Revenue and Revenue Refunding Bonds, Series 2015 Preliminary Official Statement.





## AIRLINE RATES AND CHARGES METHODOLOGY AT MIAMI INTERNATIONAL AIRPORT

### **RESIDUAL LANDING FEE**

- MDAD employs an “**airport system residual**” formula to calculate MIA landing fees.
- MDAD typically calculates landing fees effective October 1 based upon budget estimates and, if necessary, adjusts landing fees effective April 1 based upon revised estimates.
- Each year MDAD calculates MIA landing fees in such a way as to insure that revenues from landing fees together with revenues from all other sources will be at least sufficient to meet the requirements of the PAP Rate Covenant.

### ***Landing Fee Calculation***

#### **Revenue Requirement**

- + Principal and Interest Requirements
- + 20 percent coverage margin
- + Current Expenses
- + Changes in operating reserve
- + Deposit to Bond Reserve Account
- + Deposit to Reserve Maintenance Fund
- + Debt service on commercial paper
- + Debt service on other indebtedness
- + Required deposits for commercial paper and other indebtedness
- + Interest earnings—Reserve Maintenance Fund
- + Interest earning—Improvement Fund
- = Total Revenue Requirement

#### **Revenue Credits**

- Aviation Fees
- Terminal Rentals
- Commercial Revenues
- Other Revenues
- Deposit from Improvement Fund
- PAP Revenues net of Landing Fees
- = Subtotal Revenue Credits
- + Revenues for September landings
- = Total Revenue Credits

**Revenue Requirement less Revenue Credits = Landing Fee Requirement**

**Divided by Total Landed Weight (11 months October thru August)**

**= Landing Fee Rate**

## TERMINAL RENTALS

- MDAD calculates terminal rents using a cost recovery approach under an equalized rate methodology. This means that rates for space are uniform within a category regardless of when the facility was built. (Concourse space in Concourses A and H have the same rental rates as similar categories of space in Concourses F and G.)
- The terminal rental rates and terminal user fees are effective October 1 based upon the annual budget and are not adjusted at mid-year.
- Terminal rental rate is calculated using a weighted rate based upon space classification, which is determined based on the type of space being utilized. Detailed information regarding this calculation and the space classification definitions are contained in the appendix at the end of the presentation.

### *Classification of Terminal Space*

**Class I**—all space related to airline regular and special passenger service facilities, including ticket and interline counters, passenger service centers, and the like.

**Class II**—airline club rooms and all air-conditioned office space in the main Terminal Building, including the office tower, baggage service rooms and excluding the concourses outboard of security screening.

**Class III**—all other air-conditioned operating space including baggage claim, hold rooms, group rooms, concourse office space and the like.

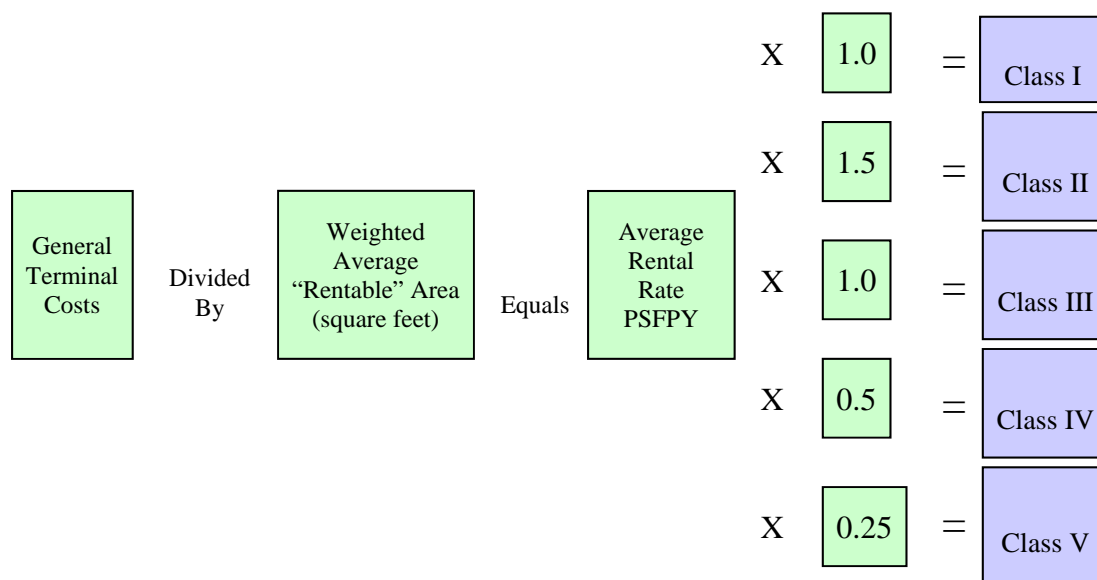
**Class IV**—all enclosed or semi-enclosed non-air-conditioned operating space including baggage make-up areas, parts storage and the like.

**Class V**—leased space created as part of the building shadow line, included in the Terminal pursuant to the definition of Terminal Building in the Lease.

**Class VI**—all other leasable revenue producing and concession space.

Nonrentable (support) space (**Class VII**) is apportioned to rentable areas.

### *Terminal Rental Rate Weighted Space Calculation*



### ***Terminal User Fees***

- **Concourse Use Fee**—*Per arriving and per departing aircraft seat*  
For the use of holdrooms, gate positions, and related passenger circulation areas that are made available to airlines on a common-use basis.
- **Domestic Baggage Claim Fee**—*Per arriving domestic aircraft seat*  
For the use of terminal space and specialized terminal equipment dedicated to the domestic baggage claim function.
- **Screening Fee**—*Per departing aircraft seat*  
For checkpoint security costs incurred by MDAD.
- **International Facilities Fee**—*Per arriving international aircraft seat*  
For international capital and operational costs.
- **Outbound Baggage Fee**—*Per departing domestic and international seat (except for departing seats of airlines that operate and maintain their own outbound baggage system such as American)*  
For outbound baggage systems equipment and operational costs.

### ***Terminal User Fees Calculation***

USE	Equals	RATE	Divided By	ACTIVITY
Concourse		Class III rental rate x Areas for holdrooms, domestic & int'l "sterile" circulation, FIS processing, & int'l baggage claim = Space costs (equivalent rental)		Arriving and departing seats
Domestic Baggage Claim		Space costs for domestic baggage claim + Cost of domestic claim equipment		Arriving domestic seats
Screening		Cost of screening equipment + Operating		Departing seats
International Facilities		Portion of costs of "E-satellite" shuttle + Int'l operations		Arriving international
Outbound Baggage – O&M		Operating expenses related to conventional system and to laser systems acquired from EA & PA		Departing seats (except AA)
Outbound Baggage – Capital		Amortization expense related to "conventional" portion of AA, EA, & PA laser systems		Departing seats

## Airside Tab

**LANDING FEE CALCULATION  
MIAMI INTERNATIONAL AIRPORT  
For Fiscal Years Ended September 30**

Landing Fee Calculation	Budget Calculation		Variance	% Chg.
	FY 2014-15	FY 2015-16		
<b>Airport System Requirement:</b>				
Principal & Interest Requirement	\$375,107,000	\$377,030,010	\$1,923,010	0.5%
Less: PFC Revenue	(55,000,000)	(53,000,000)	2,000,000	-3.6%
Net P & I Requirement	\$320,107,000	\$324,030,010	\$3,923,010	1.2%
Times Coverage Factor	1.20	1.20		
P&I Requirement Plus Coverage	\$384,128,400	\$388,836,012	\$4,707,612	1.2%
Current Expenses	457,971,325	474,068,181	16,096,856	3.5%
Increase/(Decrease) in O&M Reserve	4,904,997	2,736,466	(2,168,531)	-44.2%
Deposit from Bond Service Account (Interest)	(3,000,000)	(3,000,000)	0	0.0%
Deposit to Reserve Maintenance Fund	17,000,000	25,000,000	8,000,000	47.1%
Subordinate Debt Payment	15,431,278	15,314,713	(116,565)	-0.8%
<b>Total Requirement [A]</b>	<b>\$876,436,000</b>	<b>\$902,955,371</b>	<b>\$26,519,372</b>	<b>3.0%</b>
<b>Less: Revenues Net of Landing Fees</b>				
Aviation Fees	\$315,666,605	\$321,849,072	\$6,182,467	2.0%
Terminal Rentals	61,426,042	62,141,476	715,434	1.2%
Structure & Other Rentals	58,565,313	63,713,488	5,148,175	8.8%
Commercial Revenues	283,686,109	286,083,129	2,397,020	0.8%
Other Revenues	16,899,550	19,124,382	2,224,833	13.2%
G/A Airports	7,791,590	7,984,416	192,826	2.5%
Transfer from Improvement Fund (Deposit to RF)	75,000,000	80,000,000	5,000,000	6.7%
<b>Total Revenues [B]</b>	<b>\$819,035,208</b>	<b>\$840,895,963</b>	<b>\$21,860,755</b>	<b>2.7%</b>
<b>Amount Recovered from Landing Fees [A-B] [C]</b>	<b>\$57,400,792</b>	<b>\$62,059,409</b>	<b>\$4,658,617</b>	<b>8.1%</b>
Less: Sept. collections (prior yr) from Ldg. Fees [D]	\$4,532,661	\$4,149,328	(383,333)	-8.5%
<b>Net Amt Recovered from Landing Fees [C-D] [E]</b>	<b>\$52,868,131</b>	<b>\$57,910,081</b>	<b>\$5,041,950</b>	<b>9.5%</b>
Estimated Landed Weight in 1,000 lb. units (1) [F]	33,485,000	34,526,500	1,041,500	3.1%
<b>Landing Fee Rate (per 1,000 lb. unit) [E/F] [G]</b>	<b>\$1.58</b>	<b>\$1.68</b>	<b>\$0.10</b>	<b>6.2%</b>
<b>Total Landing Fee Revenue [G*F+D]</b>	<b>\$57,400,792</b>	<b>\$62,059,409</b>	<b>\$4,658,617</b>	<b>8.1%</b>

(1) Represents estimated landed weight for 11 months.

## AIRCRAFT PARKING FEES MIAMI INTERNATIONAL AIRPORT

*(Policy last updated October 1, 2008 and is subject to change)*

**Regular Aircraft Parking** – Passenger aircraft using terminal gates, hardstands or remote positions will accrue parking fees if any of the following conditions exist:

- (A) Aircraft that park on a hardstand or remote position will be charged after a two (2) hour grace period. Subsequent daily charges will apply every 24 hours.
- (B) Aircraft that park at a terminal gate will be charged the first day parking charge after a four (4) hour grace period. Subsequent daily charges will apply every 24 hours.

Regular aircraft parking charges will reflect (24 hour) daily rates for 1 to 5 days, 6 to 15 days, 16 to 30 days, and 31+ days. Minimum charge for M-1 type aircraft will be \$11.00 per day for 1 to 5 days and increase thereafter. Aircraft parking rates for 1 to 5 days are calculated by multiplying the ground rental rate by aircraft shadow (length x wingspan) then dividing by 365 (days per year). This rate is then increased by a factor of 1.5 for the 6 to 15 day rate; a factor of 2 for the 16 to 30 day rate and a factor of 4 for the 31+ day rate. An aircraft take-off and landing will allow the parking rate to revert back to day one (1). No aircraft parking at MIA shall exceed forty-five (45) consecutive days without express written consent from the Assistant Director of Airside Operations, or an Airside Division designee.

**Overtime Parking** - Aircraft and/or ground service equipment (GSE) that do not depart or are not removed from the terminal gates, hardstands and cargo spots at the agreed upon time, and cause another aircraft to hold for that gate, hardstand or cargo spot, or block its departure from that gate, hardstand or cargo spot, or causes a gate or spot change will be charged for overtime parking.

Overtime parking charges are assessed at the rate of \$100.00 per 30 minutes or fraction thereof in excess of one hour for deplanements, one hour for enplanements, and two hours for an arrival/departure turnaround.

**Premium Charges** - Per Resolution No R-730-80, regular commercial users who do not have an MDAD credit account in good standing and who have had more than six (6) landings during any 90-day period, will be assessed an additional premium charge. The premium charge amounts to 50% of all aviation fees and charges. Regular commercial users are defined as those who operate aircraft for compensation or hire. The premium charge will be assessed starting on the seventh (7<sup>th</sup>) landing and will be added to the total of all other aviation fees charged.

**Major Maintenance** - Aircraft on regular aircraft parking that are performing major maintenance will be charged a major maintenance fee separately from the storage parking fee.

Aircraft requiring major maintenance (other than regular turn-around maintenance) while parked at common use aircraft parking positions will be charged \$300.00 per 24-hour period.

## **AIRCRAFT PARKING FEES (continued)**

**Cargo Aircraft Parking Position Fees**—payable whenever an aircraft uses a designated MDAD cargo position. Fees commence on the arrival of the aircraft at the cargo position. Charges are listed below.

- Aircraft 60,000 lbs and under in landed weight
  - First 4 hours \$60.00
  - Each additional hour \$15.00
  - 24 hour maximum \$360.00
- Aircraft between 60,001 and 270,000 lbs in landed weight
  - First 4 hours \$120.00
  - Each additional hour \$30.00
  - 24 hour maximum \$720.00
- Aircraft in excess of 270,000 lbs in landed weight
  - First 4 hours \$200.00
  - Each additional hour \$60.00
  - 24 hour maximum \$1,400.00

**Derelict or Non-Operating Aircraft** - Fee of up to \$500.00 per day for each day a tenant or airport user parks or stores a derelict or non-operating aircraft of any size or parts thereof on airport premises beyond the permitted sixty (60) day period.

### **New Fees for Charter Airlines (effective October 1, 2006)**

**VIP Ramp Escort Fee** – MIA provides a premium service whereby passengers are escorted directly to or from the steps of the aircraft parked at an airfield location. The charter operator is responsible for providing the passenger ground transportation vehicle, which must be escorted onto the airfield by MDAD personnel.

All of the following fees apply to charter operators providing this service to their customers:

1. An escort/attendant fee associated with the mandatory escort of vehicle(s) to be used for transporting passengers on the airfield. Fee will be \$150.00 for each hour (2-hour minimum) to cover escort vehicles' operating costs and labor (escort/attendant).
2. A fee for the use of MDAD owned stair truck (if used) as listed in the Ground Support Charges schedule (page 12).
3. Landing Fee (for arriving charters) as shown on the Summary of Airline Charges (page 2) schedule.
4. Inspection Fees: charter operator will be responsible for arranging separately and paying for, applicable services required by Federal agencies including the Transportation Security Administration (TSA) for departing flights, and FIS for arriving international flights.



### **HANDLING BY FBO (Fixed Base Operator)**

A charter operator may contract with an FBO to perform various ground handling services. Such services are provided on the premises of the FBO. In addition to landing fees and other charges that the FBO may be required to collect for the use of various Airport facilities and services, the FBO may establish its own charges for services rendered. Charter operators should contact the FBO for all charges.

### **HANDLING BY AUTHORIZED GROUND HANDLER**

Authorized ground handlers compete for the services of charter and scheduled airline operators at MIA. Such ground handlers utilize the existing terminal facilities (check-in counters and gates) to process passengers, baggage and the aircraft. Charter operators contract directly with such ground handlers. In addition to landing fees and other charges that the ground handler may be required to collect for the use of various Airport facilities and services, the ground handler may establish its own charges for services rendered. Charter operators should contact the ground handler for all charges.

***SEE SCHEDULE AT THE END OF THIS SECTION FOR LANDED WEIGHT AND  
AIRCRAFT PARKING COST BY AIRCRAFT TYPE***

**GROUND SUPPORT CHARGES  
MIAMI INTERNATIONAL AIRPORT  
AS OF OCTOBER 1, 2015**

**Pre-conditioned Air** All aircraft using a gate equipped with preconditioned air will be charged preconditioned air fees. The use for the aircraft preconditioned air supply equipment will continue to be assessed to all airlines using the system by aircraft type. The rates will remain as follows:

<b>Narrow Body (N)</b>	<b>=</b>	<b>\$18.34 for any use (per arrival – no time limit)</b>
<b>Wide Body (W)</b>	<b>=</b>	<b>\$40.58 for any use (per arrival – no time limit)</b>
<b>Jumbo Body (J)</b>	<b>=</b>	<b>\$54.15 for any use (per arrival – no time limit)</b>

MDAD account customers will report all preconditioned air system uses directly to the Finance Division on a monthly basis. The Finance Division will supply the correct form for reporting the usage.

**MDAD Loading Bridges** = **\$35.00 per arrival and/or \$35.00 per departure.** All aircraft using additional loading bridges (more than one) will be charged \$35.00 per arrival and/or \$35.00 per departure for each additional loading bridge used.

**MDAD SafeGate Loading Bridge Fee** = **\$5.00 per loading bridge use for gates equipped with SafeGate aircraft arrival system.** This charge will be assessed in addition to the standard loading bridge fee. Gates not equipped with SafeGate will be charged the standard loading bridge fee.

**Stair Truck Usage Fee** = **\$100.00 per hour** Note: This fee is only waived for use on United States military aircraft.

**Escort Fee - Aircraft** = **\$100.00 per escort**

**Escort Fee - Delivery Vehicles or Non-Passenger Vehicles** = **\$10.00 per escort**

**Escort Fee - Vehicle Escort for VIP Pickup at General Aviation Aircraft** = **\$20.00 per escort**

**Fuel Stop Fees:**

- Terminal Gate – Aircraft using a terminal gate for a fuel stop will be charged a terminal fuel stop fee equivalent to a concourse fee, and a one-way loading bridge fee for a maximum of two (2) hours. Any additional time will incur overtime parking fees.
- Remote Locations and General Aviation Center (GAC) – A fuel stop fee equivalent to a one-day parking charge per aircraft type will be charged at remote locations and the General Aviation Center for aircraft refueling operations up to a maximum of two (2) hours. Any additional parking time will incur parking fees.

**General Aviation Center (GAC) Facility Fee**

- GAC Domestic Fee – The fee shall be equal to the base concourse use fee for each inbound and each outbound domestic operation performed by commercial operators carrying passengers for hire that use the domestic portion of the GAC facility.
- GAC International Fee – The fee shall be equal to the base concourse use fee and international facility fee for each international arrival, and a base concourse fee for each international departure performed by commercial operators carrying passengers for hire that use the international portion of the GAC facility.

MIAMI-DADE AVIATION DEPARTMENT  
AVIATION CHARGES AT MIAMI INTERNATIONAL AIRPORT  
Effective October 1, 2015 - September 30, 2016  
Based on \$1.68 per 1,000 Pounds of Nominal Gross Landed Weight

Aircraft Type	Size	Landing Weight	Landing Charges	All Airlines	All	CUTE	All Airlines	All Airlines	GAC	GAC	GAC/Remote	Terminal Fuel	1-5	6-15	16-30	31+ Days
				Domestic Arrival	Departing CUTE Gates	RENTAL FEE	Departure	International Arrival	International Arrival	DOMESTIC Arriv/Dep	Fuel Stop	Stop	Days	Days	Days	
A300-100/200/300	W	293,000	492.24	1,457.28	48.07	460.46	1,462.34	1,636.91	1,636.91	1,080.31	181.00	1,115.31	181.00	271.50	362.00	724.00
A300-600/600R	W	309,000	519.12	1,537.92	50.73	485.94	1,543.26	1,727.49	1,727.49	1,140.09	182.00	1,175.09	182.00	273.00	364.00	728.00
A310-200	W	261,000	438.48	1,169.28	38.57	369.46	1,173.34	1,313.41	1,313.41	866.81	154.00	901.81	154.00	231.00	308.00	616.00
A310-300	W	272,000	456.96	1,105.92	36.48	349.44	1,109.76	1,242.24	1,242.24	819.84	154.00	854.84	154.00	231.00	308.00	616.00
A318	N	124,000	208.32	576.00	19.00	182.00	578.00	647.00	647.00	427.00	81.00	462.00	81.00	121.50	162.00	324.00
A319	N	136,000	228.48	737.28	24.32	232.96	739.84	828.16	828.16	546.56	87.00	581.56	87.00	130.50	174.00	348.00
A319 WINGLET	N	136,000	228.48	737.28	24.32	232.96	739.84	828.16	828.16	546.56	92.00	581.56	92.00	138.00	184.00	368.00
A320	N	142,000	238.56	910.08	30.02	287.56	913.24	1,022.26	1,022.26	674.66	96.00	709.66	96.00	144.00	192.00	384.00
A320 WINGLET	N	142,000	238.56	910.08	30.02	287.56	913.24	1,022.26	1,022.26	674.66	101.00	709.66	101.00	151.50	202.00	404.00
A321	N	161,000	270.48	990.72	32.68	313.04	994.16	1,112.84	1,112.84	734.44	113.00	769.44	113.00	169.50	226.00	452.00
A321 WINGLET	N	161,000	270.48	990.72	32.68	313.04	994.16	1,112.84	1,112.84	734.44	120.00	769.44	120.00	180.00	240.00	480.00
A330-200	W	402,000	675.36	1,509.12	49.78	476.84	1,514.36	1,695.14	1,695.14	1,118.74	267.00	1,153.74	267.00	400.50	534.00	1,068.00
A330-200F FREIGHTER	W	413,000	693.84	-	-	-	-	-	-	-	267.00	35.00	267.00	400.50	534.00	1,068.00
A330-300	W	413,000	693.84	1,549.44	51.11	489.58	1,554.82	1,740.43	1,740.43	1,148.63	289.00	1,183.63	289.00	433.50	578.00	1,156.00
A340-200	W	407,000	683.76	1,422.72	46.93	449.54	1,427.66	1,598.09	1,598.09	1,054.69	269.00	1,089.69	269.00	403.50	538.00	1,076.00
A340-300	W	423,000	710.64	1,635.84	53.96	516.88	1,641.52	1,837.48	1,837.48	1,212.68	289.00	1,247.68	289.00	433.50	578.00	1,156.00
A340-500	W	543,000	912.24	1,935.36	63.84	611.52	1,942.08	2,173.92	2,173.92	1,434.72	324.00	1,469.72	324.00	486.00	648.00	1,296.00
A340-600	W	585,000	982.80	1,969.92	64.98	622.44	1,976.76	2,212.74	2,212.74	1,460.34	359.00	1,495.34	359.00	538.50	718.00	1,436.00
A350-1000	W	515,000	865.20	2,108.16	69.54	666.12	2,115.48	2,368.02	2,368.02	1,562.82	362.00	1,597.82	362.00	543.00	724.00	1,448.00
A350-800	W	425,000	714.00	1,612.80	53.20	509.60	1,618.40	1,811.60	1,811.60	1,195.60	296.00	1,230.60	296.00	444.00	592.00	1,184.00
A350-900	W	452,000	759.36	1,808.64	59.66	571.48	1,814.92	2,031.58	2,031.58	1,340.78	327.00	1,375.78	327.00	490.50	654.00	1,308.00
A380-800	J	871,000	1,463.28	2,868.48	94.62	906.36	2,878.44	3,222.06	3,222.06	2,126.46	437.00	2,161.46	437.00	655.50	874.00	1,748.00
A380F FREIGHTER	J	942,000	1,582.56	-	-	-	-	-	-	-	437.00	35.00	437.00	655.50	874.00	1,748.00
AN-10	N	122,000	204.96	489.60	16.15	154.70	491.30	549.95	549.95	362.95	106.00	397.95	106.00	159.00	212.00	424.00
AN-12	N	122,000	204.96	-	-	-	-	-	-	-	95.00	35.00	95.00	142.50	190.00	380.00
AN-124	W	729,000	1,224.72	2,016.00	66.50	637.00	2,023.00	2,264.50	2,264.50	1,494.50	361.00	1,529.50	361.00	541.50	722.00	1,444.00
AN-2	C	15,000	25.20	51.84	1.71	16.38	52.02	58.23	58.23	38.43	17.00	73.43	17.00	25.50	34.00	68.00
AN-22	W	500,000	840.00	-	-	-	-	-	-	-	280.00	35.00	280.00	420.00	560.00	1,120.00
AN-225	J	1,213,000	2,037.84	-	-	-	-	-	-	-	549.00	35.00	549.00	823.50	1,098.00	2,196.00
AN-24	C	46,000	77.28	288.00	9.50	91.00	289.00	323.50	323.50	213.50	52.00	248.50	52.00	78.00	104.00	208.00
AN-26	C	53,000	89.04	241.92	7.98	76.44	242.76	271.74	271.74	179.34	52.00	214.34	52.00	78.00	104.00	208.00
AN-30	C	51,000	85.68	-	-	-	-	-	-	-	54.00	35.00	54.00	81.00	108.00	216.00
AN-32	C	57,000	95.76	299.52	9.88	94.64	300.56	336.44	336.44	222.04	52.00	257.04	52.00	78.00	104.00	208.00
AN-72 / AN-74	N	66,000	110.88	-	-	-	-	-	-	-	57.00	35.00	57.00	85.50	114.00	228.00
Astra SPX	C	21,000	35.28	46.08	1.52	14.56	46.24	51.76	51.76	34.16	21.00	69.16	21.00	31.50	42.00	84.00
ATL98 (CARVAIR)	N	64,000	107.52	-	-	-	-	-	-	-	48.00	35.00	48.00	72.00	96.00	192.00
ATR 42-300	C	36,000	60.48	241.92	7.98	76.44	242.76	271.74	271.74	179.34	42.00	214.34	42.00	63.00	84.00	168.00
ATR 42-320	C	36,000	60.48	264.96	8.74	83.72	265.88	297.62	297.62	196.42	42.00	231.42	42.00	63.00	84.00	168.00
ATR 42-500	C	40,000	67.20	264.96	8.74	83.72	265.88	297.62	297.62	196.42	42.00	231.42	42.00	63.00	84.00	168.00
ATR 72-200 / 210	C	47,000	78.96	380.16	12.54	120.12	381.48	427.02	427.02	281.82	55.00	316.82	55.00	82.50	110.00	220.00
ATR 72-500	C	49,000	82.32	368.64	12.16	116.48	369.92	414.08	414.08	273.28	55.00	308.28	55.00	82.50	110.00	220.00
B707	N	247,000	414.96	846.72	27.93	267.54	849.66	951.09	951.09	627.69	156.00	662.69	156.00	234.00	312.00	624.00
B717-200	N	103,000	173.04	673.92	22.23	212.94	676.26	756.99	756.99	499.59	81.00	534.59	81.00	121.50	162.00	324.00
B727-100	N	141,000	236.88	685.44	22.61	216.58	687.82	769.93	769.93	508.13	101.00	543.13	101.00	151.50	202.00	404.00
B727-200	N	155,000	260.40	864.00	28.50	273.00	867.00	970.50	970.50	640.50	116.00	675.50	116.00	174.00	232.00	464.00
B737-100	N	96,000	161.28	616.32	20.33	194.74	618.46	692.29	692.29	456.89	61.00	491.89	61.00	91.50	122.00	244.00
B737-200	N	98,000	164.64	691.20	22.80	218.40	693.60	776.40	776.40	512.40	65.00	547.40	65.00	97.50	130.00	260.00
B737-200 WINGLET	N	98,000	164.64	691.20	22.80	218.40	693.60	776.40	776.40	512.40	73.00	547.40	73.00	109.50	146.00	292.00
B737-200C	N	102,000	171.36	668.16	22.04	211.12	670.48	750.52	750.52	495.32	65.00	530.32	65.00	97.50	130.00	260.00
B737-300	N	115,000	193.20	691.20	22.80	218.40	693.60	776.40	776.40	512.40	73.00	547.40	73.00	109.50	146.00	292.00
B737-300 WINGLET	N	115,000	193.20	691.20	22.80	218.40	693.60	776.40	776.40	512.40	78.00	547.40	78.00	117.00	156.00	312.00
B737-400	N	123,000	206.64	852.48	28.12	269.36	855.44	957.56	957.56	631.96	79.00	666.96	79.00	118.50	158.00	316.00
B737-400 WINGLET	N	123,000	206.64	852.48	28.12	269.36	855.44	957.56	957.56	631.96	85.00	666.96	85.00	127.50	170.00	340.00
B737-500	N	110,000	184.80	691.20	22.80	218.40	693.60	776.40	776.40	512.40	68.00	547.40	68.00	102.00	136.00	272.00
B737-500 WINGLET	N	110,000	184.80	691.20	22.80	218.40	693.60	776.40	776.40	512.40	73.00	547.40	73.00	109.50	146.00	292.00
B737-600	N	121,000	203.28	685.44	22.61	216.58	687.82	769.93	769.93	508.13	81.00	543.13	81.00	121.50	162.00	324.00
B737-700	N	128,000	215.04	714.24	23.56	225.68	716.72	802.28	802.28	529.48	87.00	564.48	87.00	130.50	174.00	348.00
B737-700 WINGLET	N	128,000	215.04	714.24	23.56	225.68	716.72	802.28	802.28	529.48	91.00	564.48	91.00	136.50	182.00	364.00
B737-800	N	144,000	241.92	921.60	30.40	291.20	924.80	1,035.20	1,035.20	683.20	102.00	718.20	102.00	153.00	204.00	408.00
B737-800 WINGLET	N	144,000	241.92	921.60	30.40	291.20	924.80	1,035.20	1,035.20	683.20	106.00	718.20	106.00	159.00	212.00	424.00
B737-900	N	146,000	245.28	961.92	31.73	303.94	965.26	1,080.49	1,080.49	713.09	109.00	748.09	109.00	163.50	218.00	436.00

MIAMI-DADE AVIATION DEPARTMENT  
AVIATION CHARGES AT MIAMI INTERNATIONAL AIRPORT  
Effective October 1, 2015 - September 30, 2016  
Based on \$1.68 per 1,000 Pounds of Nominal Gross Landed Weight

Aircraft Type	Size	Landing Weight	Landing Charges	All Airlines			All Airlines			GAC			Terminal Fuel Stop	1-5 Days	6-15 Days	16-30 Days	31+ Days
				Domestic Arrival	Departing Cute Gates	CUTE RENTAL FEE	Domestic Departure	International Arrival	International Arrival	International Arrival	DOMESTIC Arriv/Dep	GAC/Remote Fuel Stop					
B737-900 WINGLET	N	146,000	245.28	961.92	31.73	303.94	965.26	1,080.49	1,080.49	713.09	113.00	748.09	113.00	226.00	452.00		
B747-100	J	575,000	966.00	2,263.68	74.67	715.26	2,271.54	2,542.71	2,542.71	1,678.11	317.00	1,713.11	317.00	475.50	634.00	1,268.00	
B747-100B/SR/SF	J	564,000	947.52	3,168.00	104.50	1,001.00	3,179.00	3,558.50	3,558.50	2,348.50	317.00	2,383.50	317.00	475.50	634.00	1,268.00	
B747-200	J	630,000	1,058.40	2,113.92	69.73	667.94	2,121.26	2,374.49	2,374.49	1,567.09	317.00	1,602.09	317.00	475.50	634.00	1,268.00	
B747-200 CF	J	630,000	1,058.40	1,405.44	46.36	444.08	1,410.32	1,578.68	1,578.68	1,041.88	317.00	1,076.88	317.00	475.50	634.00	1,268.00	
B747-200B	J	595,000	999.60	2,304.00	76.00	728.00	2,312.00	2,588.00	2,588.00	1,708.00	317.00	1,743.00	317.00	475.50	634.00	1,268.00	
B747-200C	J	621,000	1,043.28	1,405.44	46.36	444.08	1,410.32	1,578.68	1,578.68	1,041.88	317.00	1,076.88	317.00	475.50	634.00	1,268.00	
B747-300	J	564,000	947.52	2,327.04	76.76	735.28	2,335.12	2,613.88	2,613.88	1,725.08	317.00	1,760.08	317.00	475.50	634.00	1,268.00	
B747-300C	J	605,000	1,016.40	1,497.60	49.40	473.20	1,502.80	1,682.20	1,682.20	1,110.20	317.00	1,145.20	317.00	475.50	634.00	1,268.00	
B747-300SR	J	525,000	882.00	3,594.24	118.56	1,135.68	3,606.72	4,037.28	4,037.28	2,664.48	317.00	2,699.48	317.00	475.50	634.00	1,268.00	
B747-400	J	608,000	1,021.44	2,033.28	67.07	642.46	2,040.34	2,283.91	2,283.91	1,507.31	342.00	1,542.31	342.00	513.00	684.00	1,368.00	
B747-400C	J	611,000	1,026.48	2,309.76	76.19	729.82	2,317.78	2,594.47	2,594.47	1,712.27	342.00	1,747.27	342.00	513.00	684.00	1,368.00	
B747-400F FREIGHTER	J	666,000	1,118.88	-	-	-	-	-	-	-	342.00	35.00	342.00	513.00	684.00	1,368.00	
B747-8F FREIGHTER	J	763,000	1,281.84	-	-	-	-	-	-	-	393.00	35.00	393.00	589.50	786.00	1,572.00	
B747-8I PASSENGER	J	688,000	1,155.84	2,085.12	68.78	658.84	2,092.36	2,342.14	2,342.14	1,545.74	393.00	1,580.74	393.00	589.50	786.00	1,572.00	
B747-LCF	J	575,000	966.00	-	-	-	-	-	-	-	347.00	35.00	347.00	520.50	694.00	1,388.00	
B747SP	J	450,000	756.00	1,463.04	48.26	462.28	1,468.12	1,643.38	1,643.38	1,084.58	253.00	1,119.58	253.00	379.50	506.00	1,012.00	
B757-200	N	200,000	336.00	1,082.88	35.72	342.16	1,086.64	1,216.36	1,216.36	802.76	135.00	837.76	135.00	202.50	270.00	540.00	
B757-200 WINGLET	N	200,000	336.00	1,082.88	35.72	342.16	1,086.64	1,216.36	1,216.36	802.76	146.00	837.76	146.00	219.00	292.00	584.00	
B757-200PF FREIGHTER	N	210,000	352.80	-	-	-	-	-	-	-	135.00	35.00	135.00	202.50	270.00	540.00	
B757-300	N	224,000	376.32	1,226.88	40.47	387.66	1,231.14	1,378.11	1,378.11	909.51	156.00	944.51	156.00	234.00	312.00	624.00	
B757-300 WINGLET	N	224,000	376.32	1,226.88	40.47	387.66	1,231.14	1,378.11	1,378.11	909.51	168.00	944.51	168.00	252.00	336.00	672.00	
B767-200	W	272,000	456.96	967.68	31.92	305.76	971.04	1,086.96	1,086.96	717.36	174.00	752.36	174.00	261.00	348.00	696.00	
B767-200ER	W	300,000	504.00	967.68	31.92	305.76	971.04	1,086.96	1,086.96	717.36	174.00	752.36	174.00	261.00	348.00	696.00	
B767-300	W	300,000	504.00	1,307.52	43.13	413.14	1,312.06	1,468.69	1,468.69	969.29	197.00	1,004.29	197.00	295.50	394.00	788.00	
B767-300ER	W	320,000	537.60	1,307.52	43.13	413.14	1,312.06	1,468.69	1,468.69	969.29	197.00	1,004.29	197.00	295.50	394.00	788.00	
B767-300ER WINGLET	W	320,000	537.60	1,307.52	43.13	413.14	1,312.06	1,468.69	1,468.69	969.29	210.00	1,004.29	210.00	315.00	420.00	840.00	
B767-400ER	W	350,000	588.00	1,416.96	46.74	447.72	1,421.88	1,591.62	1,591.62	1,050.42	240.00	1,085.42	240.00	360.00	480.00	960.00	
B777-200/200B/200ER	W	470,000	789.60	1,537.92	50.73	485.94	1,543.26	1,727.49	1,727.49	1,140.09	292.00	1,175.09	292.00	438.00	584.00	1,168.00	
B777-200LR	W	492,000	826.56	1,491.84	49.21	471.38	1,497.02	1,675.73	1,675.73	1,105.93	311.00	1,140.93	311.00	466.50	622.00	1,244.00	
B777-300	W	524,000	880.32	2,131.20	70.30	673.40	2,138.60	2,393.90	2,393.90	1,579.90	339.00	1,614.90	339.00	508.50	678.00	1,356.00	
B777-300ER	W	554,000	930.72	1,923.84	63.46	607.88	1,930.52	2,160.98	2,160.98	1,426.18	360.00	1,461.18	360.00	540.00	720.00	1,440.00	
B777F FREIGHTER	W	575,000	966.00	-	-	-	-	-	-	-	311.00	35.00	311.00	466.50	622.00	1,244.00	
B787-10	W	445,000	747.60	1,860.48	61.37	587.86	1,866.94	2,089.81	2,089.81	1,379.21	309.00	1,414.21	309.00	463.50	618.00	1,236.00	
B787-8	W	380,000	638.40	1,497.60	49.40	473.20	1,502.80	1,682.20	1,682.20	1,110.20	256.00	1,145.20	256.00	384.00	512.00	1,024.00	
B787-9	W	425,000	714.00	1,681.92	55.48	531.44	1,687.76	1,889.24	1,889.24	1,246.84	284.00	1,281.84	284.00	426.00	568.00	1,136.00	
BAE 1000	C	25,000	42.00	86.40	2.85	27.30	86.70	97.05	97.05	64.05	19.00	99.05	19.00	28.50	38.00	76.00	
BAE 125 (ALL)	C	23,000	38.64	46.08	1.52	14.56	46.24	51.76	51.76	34.16	18.00	69.16	18.00	27.00	36.00	72.00	
BAE 125-800	C	23,000	38.64	80.64	2.66	25.48	80.92	90.58	90.58	59.78	18.00	94.78	18.00	27.00	36.00	72.00	
BAE 146-100	N	77,000	129.36	455.04	15.01	143.78	456.62	511.13	511.13	337.33	52.00	372.33	52.00	78.00	104.00	208.00	
BAE 146-200	N	89,000	149.52	541.44	17.86	171.08	543.32	608.18	608.18	401.38	57.00	436.38	57.00	85.50	114.00	228.00	
BAE 146-300	N	84,000	141.12	622.08	20.52	196.56	624.24	698.76	698.76	461.16	61.00	496.16	61.00	91.50	122.00	244.00	
BAE 32EP	C	16,000	26.88	109.44	3.61	34.58	109.82	122.93	122.93	81.13	17.00	116.13	17.00	25.50	34.00	68.00	
BAE 748 / HS 748	C	38,000	63.84	288.00	9.50	91.00	289.00	323.50	323.50	213.50	48.00	248.50	48.00	72.00	96.00	192.00	
BAE ATP	C	49,000	82.32	403.20	13.30	127.40	404.60	452.90	452.90	298.90	60.00	333.90	60.00	90.00	120.00	240.00	
BAE AVRO RJ100	N	88,000	147.84	702.72	23.18	222.04	705.16	789.34	789.34	520.94	47.00	555.94	47.00	70.50	94.00	188.00	
BAE AVRO RJ70	N	83,000	139.44	541.44	17.86	171.08	543.32	608.18	608.18	401.38	30.00	436.38	30.00	45.00	60.00	120.00	
BAE AVRO RJ85	N	85,000	142.80	535.68	17.67	169.26	537.54	601.71	601.71	397.11	38.00	432.11	38.00	57.00	76.00	152.00	
BEECH B-1900 C/D	C	16,000	26.88	109.44	3.61	34.58	109.82	122.93	122.93	81.13	22.00	116.13	22.00	33.00	44.00	88.00	
BEECH(EXCEPT LISTED)	M-1	15,000	25.20	46.08	1.52	14.56	46.24	51.76	51.76	34.16	13.00	69.16	13.00	19.50	26.00	52.00	
BELLANCA (ALL)	M-1	15,000	25.20	23.04	0.76	7.28	23.12	25.88	25.88	17.08	13.00	52.08	13.00	19.50	26.00	52.00	
BOEING BUSINESS BBJ	N	134,000	225.12	144.00	4.75	45.50	144.50	161.75	161.75	106.75	91.00	141.75	91.00	136.50	182.00	364.00	
BOEING BUSINESS BBJ2	N	146,000	245.28	144.00	4.75	45.50	144.50	161.75	161.75	106.75	106.00	141.75	106.00	159.00	212.00	424.00	
BOEING BUSINESS BBJ3	N	146,000	245.28	144.00	4.75	45.50	144.50	161.75	161.75	106.75	113.00	141.75	113.00	169.50	226.00	452.00	
BOMBARDIER 700 GLOBAL	C	79,000	132.72	103.68	3.42	32.76	104.04	116.46	116.46	76.86	64.00	111.86	64.00	96.00	128.00	256.00	
C-130 HERCULES/L100	N	135,000	226.80	-	-	-	-	-	-	-	105.00	35.00	105.00	157.50	210.00	420.00	
C-17 GLOBEMASTER	W	580,000	974.40	-	-	-	-	-	-	-	206.00	35.00	206.00	309.00	412.00	824.00	
C-5 GALAXY	J	636,000	1,068.48	-	-	-	-	-	-	-	375.00	35.00	375.00	562.50	750.00	1,500.00	

**MIAMI-DADE AVIATION DEPARTMENT**  
**AVIATION CHARGES AT MIAMI INTERNATIONAL AIRPORT**  
*Effective October 1, 2015 - September 30, 2016*  
*Based on \$1.68 per 1,000 Pounds of Nominal Gross Landed Weight*

Aircraft Type	Size	Landing Weight	Landing Charges	All Airlines		CUTE RENTAL FEE	All Airlines		GAC International Arrival	GAC DOMESTIC Arriv/Dep	GAC/Remote Fuel Stop	Terminal Fuel Stop	1-5 Days	6-15 Days	16-30 Days	31+ Days
				Domestic Arrival	Departing Cate Gates		Departure	Arrival								
Canadair CL-415	C	37,000	62.16	-	-	-	-	-	-	-	42.00	35.00	42.00	63.00	84.00	168.00
Canadair CL-44D4	N	175,000	294.00	-	-	-	-	-	-	-	151.00	35.00	151.00	226.50	302.00	604.00
Canadair CL-600s	C	33,000	55.44	69.12	2.28	21.84	69.36	77.64	77.64	51.24	31.00	86.24	31.00	46.50	62.00	124.00
CASA 212/100/300/400	C	17,000	28.56	149.76	4.94	47.32	150.28	168.22	168.22	111.02	20.00	146.02	20.00	30.00	40.00	80.00
CASA CN-235-300	C	36,000	60.48	259.20	8.55	81.90	260.10	291.15	291.15	192.15	42.00	227.15	42.00	63.00	84.00	168.00
CESSNA 100 Series	M-1	15,000	25.20	23.04	0.76	7.28	23.12	25.88	25.88	17.08	13.00	52.08	13.00	19.50	26.00	52.00
CESSNA 200 Series	M-1	15,000	25.20	34.56	1.14	10.92	34.68	38.82	38.82	25.62	13.00	60.62	13.00	19.50	26.00	52.00
CESSNA 300-400	M-1	15,000	25.20	46.08	1.52	14.56	46.24	51.76	51.76	34.16	13.00	69.16	13.00	19.50	26.00	52.00
Challenger 300	C	34,000	57.12	46.08	1.52	14.56	46.24	51.76	51.76	34.16	31.00	69.16	31.00	46.50	62.00	124.00
Challenger 850	C	47,000	78.96	80.64	2.66	25.48	80.92	90.58	90.58	59.78	43.00	94.78	43.00	64.50	86.00	172.00
Cirrus SR20/SR22	M-1	15,000	25.20	23.04	0.76	7.28	23.12	25.88	25.88	17.08	13.00	52.08	13.00	19.50	26.00	52.00
CITATION 680	C	27,000	45.36	46.08	1.52	14.56	46.24	51.76	51.76	34.16	28.00	69.16	28.00	42.00	56.00	112.00
Citation C560XL	C	19,000	31.92	63.36	2.09	20.02	63.58	71.17	71.17	46.97	20.00	81.97	20.00	30.00	40.00	80.00
Citation I / II	C	15,000	25.20	46.08	1.52	14.56	46.24	51.76	51.76	34.16	14.00	69.16	14.00	21.00	28.00	56.00
Citation III/V/VII	C	20,000	33.60	51.84	1.71	16.38	52.02	58.23	58.23	38.43	21.00	73.43	21.00	31.50	42.00	84.00
Citation V	C	15,000	25.20	46.08	1.52	14.56	46.24	51.76	51.76	34.16	18.00	69.16	18.00	27.00	36.00	72.00
CITATION X	C	31,000	52.08	69.12	2.28	21.84	69.36	77.64	77.64	51.24	28.00	86.24	28.00	42.00	56.00	112.00
CN-235-220	C	34,000	57.12	253.44	8.36	80.08	254.32	284.68	284.68	187.88	23.00	222.88	23.00	34.50	46.00	92.00
CN-250-100	C	54,000	90.72	368.64	12.16	116.48	369.92	414.08	414.08	273.28	23.00	308.28	23.00	34.50	46.00	92.00
CONVAIR 340/440/600	C	47,000	78.96	259.20	8.55	81.90	260.10	291.15	291.15	192.15	58.00	227.15	58.00	87.00	116.00	232.00
CONVAIR 5800U	N	58,000	97.44	-	-	-	-	-	-	-	60.00	35.00	60.00	90.00	120.00	240.00
CONVAIR CV240	C	40,000	67.20	247.68	8.17	78.26	248.54	278.21	278.21	183.61	48.00	218.61	48.00	72.00	96.00	192.00
CONVAIR CV580	C	52,000	87.36	259.20	8.55	81.90	260.10	291.15	291.15	192.15	60.00	227.15	60.00	90.00	120.00	240.00
CONVAIR CV640	C	52,000	87.36	259.20	8.55	81.90	260.10	291.15	291.15	192.15	60.00	227.15	60.00	90.00	120.00	240.00
CS100	N	112,000	188.16	633.60	20.90	200.20	635.80	711.70	711.70	469.70	92.00	504.70	92.00	138.00	184.00	368.00
CS300	N	127,000	213.36	777.60	25.65	245.70	780.30	873.45	873.45	576.45	102.00	611.45	102.00	153.00	204.00	408.00
CURTISS C-46	C	46,000	77.28	357.12	11.78	112.84	358.36	401.14	401.14	264.74	58.00	299.74	58.00	87.00	116.00	232.00
DC-10-10/15 Pax	W	363,000	609.84	1,739.52	57.38	549.64	1,745.56	1,953.94	1,953.94	1,289.54	198.00	1,324.54	198.00	297.00	396.00	792.00
DC-10-30/40 Ftr	W	436,000	732.48	-	-	-	-	-	-	-	210.00	35.00	210.00	315.00	420.00	840.00
DC-10-30/40 Pax	W	403,000	677.04	1,572.48	51.87	496.86	1,577.94	1,766.31	1,766.31	1,165.71	209.00	1,200.71	209.00	313.50	418.00	836.00
DC-3 Pax	C	27,000	45.36	178.56	5.89	56.42	179.18	200.57	200.57	132.37	43.00	167.37	43.00	64.50	86.00	172.00
DC-4 (C-54)	N	63,000	105.84	253.44	8.36	80.08	254.32	284.68	284.68	187.88	77.00	222.88	77.00	115.50	154.00	308.00
DC-6B Pax	N	88,000	147.84	443.52	14.63	140.14	445.06	498.19	498.19	328.79	86.00	363.79	86.00	129.00	172.00	344.00
DC-7	N	102,000	171.36	524.16	17.29	165.62	525.98	588.77	588.77	388.57	92.00	423.57	92.00	138.00	184.00	368.00
DC-8-51/52/53	N	207,000	347.76	973.44	32.11	307.58	976.82	1,093.43	1,093.43	721.63	150.00	756.63	150.00	225.00	300.00	600.00
DC-8-54 / 55	N	240,000	403.20	973.44	32.11	307.58	976.82	1,093.43	1,093.43	721.63	150.00	756.63	150.00	225.00	300.00	600.00
DC-8-61/71	N	249,000	418.32	1,094.40	36.10	345.80	1,098.20	1,229.30	1,229.30	811.30	186.00	846.30	186.00	279.00	372.00	744.00
DC-8-62/72	N	245,000	411.60	961.92	31.73	303.94	965.26	1,080.49	1,080.49	713.09	163.00	748.09	163.00	244.50	326.00	652.00
DC-8-63/73	N	275,000	462.00	1,192.32	39.33	376.74	1,196.46	1,339.29	1,339.29	883.89	194.00	918.89	194.00	291.00	388.00	776.00
DC-9-10 Pax	N	82,000	137.76	483.84	15.96	152.88	485.52	543.48	543.48	358.68	65.00	393.68	65.00	97.50	130.00	260.00
DC-9-30 Pax	N	99,000	166.32	581.76	19.19	183.82	583.78	653.47	653.47	431.27	78.00	466.27	78.00	117.00	156.00	312.00
DC-9-40 Pax	N	102,000	171.36	576.00	19.00	182.00	578.00	647.00	647.00	427.00	82.00	462.00	82.00	123.00	164.00	328.00
DC-9-50 Pax	N	110,000	184.80	691.20	22.80	218.40	693.60	776.40	776.40	512.40	87.00	547.40	87.00	130.50	174.00	348.00
De Havilland 114	M-1	15,000	25.20	80.64	2.66	25.48	80.92	90.58	90.58	59.78	13.00	94.78	13.00	19.50	26.00	52.00
DHC-6 Twin Otter	M-1	15,000	25.20	115.20	3.80	36.40	115.60	129.40	129.40	85.40	13.00	120.40	13.00	19.50	26.00	52.00
DHC-7 Dash 7	C	45,000	75.60	288.00	9.50	91.00	289.00	323.50	323.50	213.50	52.00	248.50	52.00	78.00	104.00	208.00
DHC-8-100	C	35,000	58.80	213.12	7.03	67.34	213.86	239.39	239.39	157.99	43.00	192.99	43.00	64.50	86.00	172.00
DHC-8-200	C	35,000	58.80	213.12	7.03	67.34	213.86	239.39	239.39	157.99	43.00	192.99	43.00	64.50	86.00	172.00
DHC-8-300	C	42,000	70.56	288.00	9.50	91.00	289.00	323.50	323.50	213.50	53.00	248.50	53.00	79.50	106.00	212.00
DHC-8-400	C	62,000	104.16	403.20	13.30	127.40	404.60	452.90	452.90	298.90	70.00	333.90	70.00	105.00	140.00	280.00
Diamond DA20	M-1	15,000	25.20	11.52	0.38	3.64	11.56	12.94	12.94	8.54	13.00	43.54	13.00	19.50	26.00	52.00
Diamond DA40	M-1	15,000	25.20	23.04	0.76	7.28	23.12	25.88	25.88	17.08	13.00	52.08	13.00	19.50	26.00	52.00
Diamond DA42	M-1	15,000	25.20	23.04	0.76	7.28	23.12	25.88	25.88	17.08	13.00	52.08	13.00	19.50	26.00	52.00
DORNIER 228	M-1	15,000	25.20	109.44	3.61	34.58	109.82	122.93	122.93	81.13	13.00	116.13	13.00	19.50	26.00	52.00
DORNIER 328	C	29,000	48.72	190.08	6.27	60.06	190.74	213.51	213.51	140.91	33.00	175.91	33.00	49.50	66.00	132.00
Dornier 328	C	27,000	45.36	172.80	5.70	54.60	173.40	194.10	194.10	128.10	33.00	163.10	33.00	49.50	66.00	132.00
DORNIER 328JET	C	31,000	52.08	184.32	6.08	58.24	184.96	207.04	207.04	136.64	33.00	171.64	33.00	49.50	66.00	132.00
Eclipse EA500	M-1	15,000	25.20	46.08	1.52	14.56	46.24	51.76	51.76	34.16	13.00	69.16	13.00	19.50	26.00	52.00
EMB-110 Bandeirante	C	15,000	25.20	109.44	3.61	34.58	109.82	122.93	122.93	81.13	17.00	116.13	17.00	25.50	34.00	68.00
EMB-120 Brasilia	C	26,000	43.68	172.80	5.70	54.60	173.40	194.10	194.10	128.10	30.00	163.10	30.00	45.00	60.00	120.00

**MIAMI-DADE AVIATION DEPARTMENT**  
**AVIATION CHARGES AT MIAMI INTERNATIONAL AIRPORT**  
 Effective October 1, 2015 - September 30, 2016  
 Based on \$1.68 per 1,000 Pounds of Nominal Gross Landed Weight

Aircraft Type	Size	Landing Weight	Landing Charges	All Airlines Domestic Arrival	All Departing CUTE RENTAL Fee	All Airlines International Departure	All Airlines International Arrival	GAC International Arrival	GAC DOMESTIC Arriv/Dep	GAC/Remote Fuel Stop	Terminal Fuel Stop	1-5 Days	6-15 Days	16-30 Days	31+ Days
EMBRAER 175/170-200	N	75,000	126.00	437.76	14.44	138.32	439.28	491.72	324.52	62.00	359.52	62.00	93.00	124.00	248.00
EMBRAER 195/190-200	C	101,000	169.68	679.68	22.42	214.76	682.04	763.46	503.86	84.00	538.86	84.00	126.00	168.00	336.00
EMBRAER ERJ170-100	N	72,000	120.96	403.20	13.30	127.40	404.60	452.90	298.90	59.00	333.90	59.00	88.50	118.00	236.00
EMBRAER ERJ-190-100	C	98,000	164.64	564.48	18.62	178.36	566.44	634.06	418.46	79.00	453.46	79.00	118.50	158.00	316.00
Embraer Phenom 100	M-1	15,000	25.20	34.56	1.14	10.92	34.68	38.82	25.62	13.00	60.62	13.00	19.50	26.00	52.00
Embraer Phenom 300	C	17,000	28.56	34.56	1.14	10.92	34.68	38.82	25.62	19.00	60.62	19.00	28.50	38.00	76.00
EMBRAER EMB-550 (LEGACY 500)	C	35,000	58.80	46.08	1.52	14.56	46.24	51.76	34.16	32.00	69.16	32.00	48.00	64.00	128.00
FALCON 10 / 100	C	18,000	30.24	46.08	1.52	14.56	46.24	51.76	34.16	13.00	69.16	13.00	19.50	26.00	52.00
FALCON 2000	C	40,000	67.20	109.44	3.61	34.58	109.82	122.93	81.13	33.00	116.13	33.00	49.50	66.00	132.00
FALCON 20D/20F/200	C	27,000	45.36	80.64	2.66	25.48	80.92	90.58	59.78	21.00	94.78	21.00	31.50	42.00	84.00
FALCON 50	C	36,000	60.48	57.60	1.90	18.20	57.80	64.70	42.70	26.00	77.70	26.00	39.00	52.00	104.00
FALCON 5X	C	67,000	112.56	46.08	1.52	14.56	46.24	51.76	34.16	50.00	69.16	50.00	75.00	100.00	200.00
FALCON 7X	C	63,000	105.84	46.08	1.52	14.56	46.24	51.76	34.16	46.00	69.16	46.00	69.00	92.00	184.00
FALCON 8X	C	63,000	105.84	80.64	2.66	25.48	80.92	90.58	59.78	49.00	94.78	49.00	73.50	98.00	196.00
FALCON 900	C	45,000	75.60	46.08	1.52	14.56	46.24	51.76	34.16	33.00	69.16	33.00	49.50	66.00	132.00
FOKKER 100	N	88,000	147.84	622.08	20.52	196.56	624.24	698.76	461.16	75.00	496.16	75.00	112.50	150.00	300.00
FOKKER 50 (F27-50)	C	43,000	72.24	334.08	11.02	105.56	335.24	375.26	247.66	55.00	282.66	55.00	82.50	110.00	220.00
FOKKER 70 (F28-70)	C	78,000	131.04	460.80	15.20	145.60	462.40	517.60	341.60	56.00	376.60	56.00	84.00	112.00	224.00
FOKKER F27	C	42,000	70.56	288.00	9.50	91.00	289.00	323.50	213.50	55.00	248.50	55.00	82.50	110.00	220.00
FOKKER F28 1000	C	59,000	99.12	362.88	11.97	114.66	364.14	407.61	269.01	49.00	304.01	49.00	73.50	98.00	196.00
FOKKER F28 2000	C	59,000	99.12	362.88	11.97	114.66	364.14	407.61	269.01	49.00	304.01	49.00	73.50	98.00	196.00
FOKKER F28 3000	C	69,000	115.92	489.60	16.15	154.70	491.30	549.95	362.95	56.00	397.95	56.00	84.00	112.00	224.00
FOKKER F28 4000	C	69,000	115.92	489.60	16.15	154.70	491.30	549.95	362.95	56.00	397.95	56.00	84.00	112.00	224.00
GRUMMAN EXCEPT G-111	M-1	15,000	25.20	46.08	1.52	14.56	46.24	51.76	34.16	13.00	69.16	13.00	19.50	26.00	52.00
Grumman G-111	C	32,000	53.76	161.28	5.32	50.96	161.84	181.16	119.56	41.00	154.56	41.00	61.50	82.00	164.00
Gulfstream G150	C	22,000	36.96	46.08	1.52	14.56	46.24	51.76	34.16	22.00	69.16	22.00	33.00	44.00	88.00
Gulfstream G-159	C	33,000	55.44	126.72	4.18	40.04	127.16	142.34	93.94	35.00	128.94	35.00	52.50	70.00	140.00
Gulfstream G280	C	33,000	55.44	57.60	1.90	18.20	57.80	64.70	42.70	29.00	77.70	29.00	43.50	58.00	116.00
Gulfstream G450	C	66,000	110.88	92.16	3.04	29.12	92.48	103.52	68.32	49.00	103.32	49.00	73.50	98.00	196.00
Gulfstream G550	C	75,000	126.00	103.68	3.42	32.76	104.04	116.46	76.86	63.00	111.86	63.00	94.50	126.00	252.00
Gulfstream G650	C	84,000	141.12	69.12	2.28	21.84	69.36	77.64	51.24	69.00	86.24	69.00	103.50	138.00	276.00
Gulfstream Galaxy	C	28,000	47.04	57.60	1.90	18.20	57.80	64.70	42.70	25.00	77.70	25.00	37.50	50.00	100.00
Gulfstream II/III/IV	C	59,000	99.12	92.16	3.04	29.12	92.48	103.52	68.32	45.00	103.32	45.00	67.50	90.00	180.00
Gulfstream V	C	66,000	110.88	46.08	1.52	14.56	46.24	51.76	34.16	59.00	69.16	59.00	88.50	118.00	236.00
HA-420	M-1	15,000	25.20	34.56	1.14	10.92	34.68	38.82	25.62	13.00	60.62	13.00	19.50	26.00	52.00
Hawker 1000	C	31,000	52.08	51.84	1.71	16.38	52.02	58.23	38.43	19.00	73.43	19.00	28.50	38.00	76.00
Hawker 4000	C	34,000	57.12	46.08	1.52	14.56	46.24	51.76	34.16	30.00	69.16	30.00	45.00	60.00	120.00
Helicopters	M-1	15,000	25.20	23.04	0.76	7.28	23.12	25.88	17.08	13.00	52.08	13.00	19.50	26.00	52.00
HS 125 (except 1000)	C	23,000	38.64	46.08	1.52	14.56	46.24	51.76	34.16	16.00	69.16	16.00	24.00	32.00	64.00
II-114	C	50,000	84.00	368.64	12.16	116.48	369.92	414.08	273.28	60.00	308.28	60.00	90.00	120.00	240.00
II-62 / 62M / 62MK	N	252,000	423.36	1,054.08	34.77	333.06	1,057.74	1,184.01	781.41	173.00	816.41	173.00	259.50	346.00	692.00
II-76 / MD	W	334,000	561.12	-	-	-	-	-	-	176.00	35.00	176.00	264.00	352.00	704.00
II-86	W	386,000	648.48	2,016.00	66.50	637.00	2,023.00	2,264.50	1,494.50	215.00	1,529.50	215.00	322.50	430.00	860.00
II-96-300	W	386,000	648.48	1,353.60	44.65	427.70	1,358.30	1,520.45	1,003.45	250.00	1,038.45	250.00	375.00	500.00	1,000.00
ISLANDER (PILATUS)	M-1	15,000	25.20	57.60	1.90	18.20	57.80	64.70	42.70	13.00	77.70	13.00	19.50	26.00	52.00
Jetstream 31	C	15,000	25.20	103.68	3.42	32.76	104.04	116.46	76.86	17.00	111.86	17.00	25.50	34.00	68.00
Jetstream 32	C	15,000	25.20	109.44	3.61	34.58	109.82	122.93	81.13	17.00	116.13	17.00	25.50	34.00	68.00
Jetstream 41	C	23,000	38.64	172.80	5.70	54.60	173.40	194.10	128.10	27.00	163.10	27.00	40.50	54.00	108.00
Jetstream Super 31	C	16,000	26.88	109.44	3.61	34.58	109.82	122.93	81.13	17.00	116.13	17.00	25.50	34.00	68.00
L-1011 Tristar Pax	W	368,000	618.24	1,411.20	46.55	445.90	1,416.10	1,585.15	1,046.15	191.00	1,081.15	191.00	286.50	382.00	764.00
L-1329 Jetstar 1&2	C	36,000	60.48	74.88	2.47	23.66	75.14	84.11	55.51	23.00	90.51	23.00	34.50	46.00	92.00
L-188 Electra	N	96,000	161.28	472.32	15.58	149.24	473.96	530.54	350.14	81.00	385.14	81.00	121.50	162.00	324.00
L-610G	C	33,000	55.44	230.40	7.60	72.80	231.20	258.80	170.80	21.00	205.80	21.00	31.50	42.00	84.00
LA42/ILA-4-260/BUCCA	M-1	15,000	25.20	23.04	0.76	7.28	23.12	25.88	17.08	13.00	52.08	13.00	19.50	26.00	52.00
Lear 85 LJ-200	C	31,000	52.08	46.08	1.52	14.56	46.24	51.76	34.16	29.00	69.16	29.00	43.50	58.00	116.00
Learjet 20 series	M-1	15,000	25.20	57.60	1.90	18.20	57.80	64.70	42.70	13.00	77.70	13.00	19.50	26.00	52.00
Learjet 30 series	C	16,000	26.88	57.60	1.90	18.20	57.80	64.70	42.70	15.00	77.70	15.00	22.50	30.00	60.00
Learjet 45	C	19,000	31.92	57.60	1.90	18.20	57.80	64.70	42.70	15.00	77.70	15.00	22.50	30.00	60.00
Learjet 55	C	16,000	26.88	57.60	1.90	18.20	57.80	64.70	42.70	15.00	77.70	15.00	22.50	30.00	60.00
Learjet 60	C	20,000	33.60	57.60	1.90	18.20	57.80	64.70	42.70	15.00	77.70	15.00	22.50	30.00	60.00
LET 420	C	15,000	25.20	109.44	3.61	34.58	109.82	122.93	81.13	21.00	116.13	21.00	31.50	42.00	84.00

**FINAL**



**MIAMI-DADE AVIATION DEPARTMENT**  
**AVIATION CHARGES AT MIAMI INTERNATIONAL AIRPORT**  
*Effective October 1, 2015 - September 30, 2016*  
**Based on \$1.68 per 1,000 Pounds of Nominal Gross Landed Weight**

Aircraft Type	Size	Weight	Landing Charges	All			All Airlines Departure	All Airlines Arrival	GAC International Arrival	GAC DOMESTIC Arriv/Dep	GAC/Remote Fuel Stop	Terminal Fuel Stop	1-5 Days	6-15 Days	16-30 Days	31+ Days
				All Airlines Domestic Arrival	Departing Cute Gates	CUTE RENTAL FEE										
LM200	C	19,000	31.92	155.52	5.13	49.14	156.06	174.69	174.69	115.29	69.00	150.29	69.00	103.50	138.00	276.00
M-204	C	37,000	62.16	230.40	7.60	72.80	231.20	258.80	258.80	170.80	46.00	205.80	46.00	69.00	92.00	184.00
M-404	C	43,000	72.24	253.44	8.36	80.08	254.32	284.68	284.68	187.88	49.00	222.88	49.00	73.50	98.00	196.00
Maule (ALL)	M-1	15,000	25.20	23.04	0.76	7.28	23.12	25.88	25.88	17.08	13.00	52.08	13.00	19.50	26.00	52.00
MD-11 Ftr	W	472,000	792.96	-	-	-	-	-	-	-	238.00	35.00	238.00	357.00	476.00	952.00
MD-11 Pax 11ER	W	430,000	722.40	1,641.60	54.15	518.70	1,647.30	1,843.95	1,843.95	1,216.95	237.00	1,251.95	237.00	355.50	474.00	948.00
MD-81	N	128,000	215.04	840.96	27.74	265.72	843.88	944.62	944.62	623.42	111.00	658.42	111.00	166.50	222.00	444.00
MD-82	N	130,000	218.40	864.00	28.50	273.00	867.00	970.50	970.50	640.50	111.00	675.50	111.00	166.50	222.00	444.00
MD-83	N	139,000	233.52	864.00	28.50	273.00	867.00	970.50	970.50	640.50	111.00	675.50	111.00	166.50	222.00	444.00
MD-87	N	130,000	218.40	627.84	20.71	198.38	630.02	705.23	705.23	465.43	98.00	500.43	98.00	147.00	196.00	392.00
MD-88	N	130,000	218.40	858.24	28.31	271.18	861.22	964.03	964.03	636.23	111.00	671.23	111.00	166.50	222.00	444.00
MD-90-30	N	142,000	238.56	921.60	30.40	291.20	924.80	1,035.20	1,035.20	683.20	115.00	718.20	115.00	172.50	230.00	460.00
Merlin (all)	C	16,000	26.88	109.44	3.61	34.58	109.82	122.93	122.93	81.13	24.00	116.13	24.00	36.00	48.00	96.00
Metro (all)	C	16,000	26.88	109.44	3.61	34.58	109.82	122.93	122.93	81.13	24.00	116.13	24.00	36.00	48.00	96.00
Mooney (All)	M-1	15,000	25.20	23.04	0.76	7.28	23.12	25.88	25.88	17.08	13.00	52.08	13.00	19.50	26.00	52.00
MU-2/24/26	M-1	15,000	25.20	46.08	1.52	14.56	46.24	51.76	51.76	34.16	13.00	69.16	13.00	19.50	26.00	52.00
Navion (All)	M-1	15,000	25.20	23.04	0.76	7.28	23.12	25.88	25.88	17.08	13.00	52.08	13.00	19.50	26.00	52.00
Nord 262	C	23,000	38.64	167.04	5.51	52.78	167.62	187.63	187.63	123.83	31.00	158.83	31.00	46.50	62.00	124.00
P180 Avanti	C	15,000	25.20	51.84	1.71	16.38	52.02	58.23	58.23	38.43	15.00	73.43	15.00	22.50	30.00	60.00
P-3 Orion	N	96,000	161.28	472.32	15.58	149.24	473.96	530.54	530.54	350.14	81.00	385.14	81.00	121.50	162.00	324.00
PC-12/PC-6	M-1	15,000	25.20	57.60	1.90	18.20	57.80	64.70	64.70	42.70	13.00	77.70	13.00	19.50	26.00	52.00
Piper (Malibu & All)	M-1	15,000	25.20	46.08	1.52	14.56	46.24	51.76	51.76	34.16	13.00	69.16	13.00	19.50	26.00	52.00
Piper Single Engine	M-1	15,000	25.20	23.04	0.76	7.28	23.12	25.88	25.88	17.08	13.00	52.08	13.00	19.50	26.00	52.00
Pitts (All)	M-1	15,000	25.20	11.52	0.38	3.64	11.56	12.94	12.94	8.54	13.00	43.54	13.00	19.50	26.00	52.00
Regional Jet 100	N	45,000	75.60	288.00	9.50	91.00	289.00	323.50	323.50	213.50	43.00	248.50	43.00	64.50	86.00	172.00
Regional Jet 200	N	47,000	78.96	288.00	9.50	91.00	289.00	323.50	323.50	213.50	43.00	248.50	43.00	64.50	86.00	172.00
Regional Jet 700	N	67,000	112.56	403.20	13.30	127.40	404.60	452.90	452.90	298.90	57.00	333.90	57.00	85.50	114.00	228.00
Regional Jet 900	N	74,000	124.32	437.76	14.44	138.32	439.28	491.72	491.72	324.52	63.00	359.52	63.00	94.50	126.00	252.00
RJ1000	N	82,000	137.76	599.04	19.76	189.28	601.12	672.88	672.88	444.08	77.00	479.08	77.00	115.50	154.00	308.00
RJ135	C	41,000	68.88	213.12	7.03	67.34	213.86	239.39	239.39	157.99	40.00	192.99	40.00	60.00	80.00	160.00
RJ140	C	41,000	68.88	253.44	8.36	80.08	254.32	284.68	284.68	187.88	43.00	222.88	43.00	64.50	86.00	172.00
RJ145	C	42,000	70.56	288.00	9.50	91.00	289.00	323.50	323.50	213.50	45.00	248.50	45.00	67.50	90.00	180.00
RJ90	C	84,000	141.12	529.92	17.48	167.44	531.76	595.24	595.24	392.84	79.00	427.84	79.00	118.50	158.00	316.00
Saab 2000	C	48,000	80.64	195.84	6.46	61.88	196.52	219.98	219.98	145.18	50.00	180.18	50.00	75.00	100.00	200.00
Saab 340 Except 340A	C	28,000	47.04	172.80	5.70	54.60	173.40	194.10	194.10	128.10	32.00	163.10	32.00	48.00	64.00	128.00
Saab 340A	C	28,000	47.04	103.68	3.42	32.76	104.04	116.46	116.46	76.86	32.00	111.86	32.00	48.00	64.00	128.00
Saberliner (ALL)	C	20,000	33.60	57.60	1.90	18.20	57.80	64.70	64.70	42.70	17.00	77.70	17.00	25.50	34.00	68.00
Shorts 330 (SD3-30)	C	23,000	38.64	172.80	5.70	54.60	173.40	194.10	194.10	128.10	30.00	163.10	30.00	45.00	60.00	120.00
Shorts 360 (SD3-60)	C	27,000	45.36	207.36	6.84	65.52	208.08	232.92	232.92	153.72	37.00	188.72	37.00	55.50	74.00	148.00
SN601 Corvette	C	15,000	25.20	69.12	2.28	21.84	69.36	77.64	77.64	51.24	13.00	86.24	13.00	19.50	26.00	52.00
Sukhoi SSJ100-95	N	90,000	151.20	535.68	17.67	169.26	537.54	601.71	601.71	397.11	63.00	432.11	63.00	94.50	126.00	252.00
Swearingen Merlin	M-1	15,000	25.20	46.08	1.52	14.56	46.24	51.76	51.76	34.16	13.00	69.16	13.00	19.50	26.00	52.00
TRISLANDER BN-2A	M-1	15,000	25.20	80.64	2.66	25.48	80.92	90.58	90.58	59.78	13.00	94.78	13.00	19.50	26.00	52.00
Tu-134 / 134A	N	95,000	159.60	483.84	15.96	152.88	485.52	543.48	543.48	358.68	81.00	393.68	81.00	121.50	162.00	324.00
Tu-144 Charger	N	396,000	665.28	806.40	26.60	254.80	809.20	905.80	905.80	597.80	139.00	632.80	139.00	208.50	278.00	556.00
Tu-154	N	176,000	295.68	990.72	32.68	313.04	994.16	1,112.84	1,112.84	734.44	75.00	769.44	75.00	112.50	150.00	300.00
Tu-204 / Tu-214	N	190,000	319.20	1,134.72	37.43	358.54	1,138.66	1,274.59	1,274.59	841.19	146.00	876.19	146.00	219.00	292.00	584.00
Tu-304	N	539,000	905.52	1,797.12	59.28	567.84	1,803.36	2,018.64	2,018.64	1,332.24	135.00	1,367.24	135.00	202.50	270.00	540.00
Tu-330	N	200,000	336.00	-	-	-	-	-	-	-	135.00	35.00	135.00	202.50	270.00	540.00
Tu-334-100	N	95,000	159.60	587.52	19.38	185.64	589.56	659.94	659.94	435.54	135.00	470.54	135.00	202.50	270.00	540.00
Tu-334-100D	N	120,000	201.60	587.52	19.38	185.64	589.56	659.94	659.94	435.54	135.00	470.54	135.00	202.50	270.00	540.00
Tu-354	N	121,000	203.28	725.76	23.94	229.32	728.28	815.22	815.22	538.02	135.00	573.02	135.00	202.50	270.00	540.00
Twin, Turbo, Jetpro	M-1	15,000	25.20	46.08	1.52	14.56	46.24	51.76	51.76	34.16	13.00	69.16	13.00	19.50	26.00	52.00
Unlisted M-1 planes	M-1	15,000	25.20	46.08	1.52	14.56	46.24	51.76	51.76	34.16	13.00	69.16	13.00	19.50	26.00	52.00
Vickers Viscount	C	54,000	90.72	362.88	11.97	114.66	364.14	407.61	407.61	269.01	162.00	304.01	162.00	243.00	324.00	648.00
Westwind 1/2/Astra	C	17,000	28.56	74.88	2.47	23.66	75.14	84.11	84.11	55.51	16.00	90.51	16.00	24.00	32.00	64.00
Yak-40	C	37,000	62.16	207.36	6.84	65.52	208.08	232.92	232.92	153.72	38.00	188.72	38.00	57.00	76.00	152.00
Yak-42 / Yak-142	N	114,000	191.52	483.84	15.96	152.88	485.52	543.48	543.48	358.68	94.00	393.68	94.00	141.00	188.00	376.00
YS-11	C	52,000	87.36	368.64	12.16	116.48	369.92	414.08	414.08	273.28	63.00	308.28	63.00	94.50	126.00	252.00



## TERMINAL TAB

## AIRLINE ACTIVITY BASED FEES CALCULATION MIAMI INTERNATIONAL AIRPORT FOR FISCAL YEARS ENDING SEPTEMBER 30,

### CONCOURSE USE FEE CALCULATION

		<u>FY 2014-15</u>	<u>FY 2015-16</u>
Domestic Concourse Airline Sq. Ft.	[A]	1,193,697	1,200,280
International Concourse Airline Sq. Ft.	[B]	1,456,176	1,412,471
Total Concourse Airline Square Feet	[C=A+B]	2,649,873	2,612,751
Class III Terminal Rental Rate	[D]	\$83.05	\$84.90
Equivalent Concourse Rent	[E=CxD]	\$220,071,953	\$221,822,560
Total Arriving/Departing Seats	[F]	51,000,000	52,000,000
<b>Fee per Seat</b>	[E/F]	\$4.32	\$4.27

### BAGGAGE CLAIM FEE CALCULATION

Baggage Claim Square Feet	[A]	194,672	198,863
Class III Terminal Rental Rate	[B]	\$83.05	\$84.90
Equivalent Rent	[C=AxB]	\$16,167,510	\$16,883,469
Baggage Claim Eqpmt & Maintenance Costs	[D]	3,312,085	3,179,397
Total for Recovery	[E=C+D]	\$19,479,594	\$20,062,866
Domestic Arriving Seats	[F]	13,254,500	13,488,423
<b>Fee per Seat</b>	[E/F]	\$1.47	\$1.49

### SCREENING USE FEE CALCULATION

Screening Costs		12,379,478	\$11,915,243
Less: Reimbursement from TSA		-500,000	(500,000)
	[A]	\$11,879,478	\$11,415,243
Total Departing Seats	[B]	25,958,292	26,520,780
<b>Fee per Seat</b>	[A/B]	\$0.46	\$0.43

### INTERNATIONAL FACILITIES USE FEE CALCULATION

International Facilities Costs	[A]	\$19,407,944	\$23,678,818
QAS Porter Service Equipment Reimbursement	[B]	\$0	0
	[C=A+B]	\$19,407,944	\$23,678,818
International Inbound - Class IV - South Terminal	[D]	16,995	16,995
International Inbound - Class IV - North Terminal	[E]	47,240	47,240
	[F=D+E]	64,235	64,235
Class IV Terminal Rental Rate	[G]	41.53	\$42.45
International Inbound Costs	[H=FxG]	\$2,667,680	\$2,726,776
International Facilities and Inbound Costs	[I=C+H]	\$22,075,624	\$26,405,593
International Arriving Seats	[J]	11,787,208	11,990,797
<b>Fee per Seat</b>	[I/J]	\$1.87	\$2.20

# **TERMINAL RENTAL RATES CALCULATION MIAMI INTERNATIONAL AIRPORT FOR FISCAL YEARS ENDING SEPTEMBER 30,**

## **AVERAGE (CLASS III) TERMINAL RENTAL RATE CALCULATION**

		<b>FY 2014-15</b>	<b>FY 2015-16</b>
Terminal Rent Requirement	[A]	\$429,954,871	<b>\$436,849,981</b>
Weighted Revenue Sq. Ft.	[B]	5,177,362	<b>5,145,210</b>
<b>Class III Rate per Sq. Ft.</b>	<b>[A/B]</b>	<b>\$83.05</b>	<b>\$84.90</b>

## **WEIGHTED RENTAL RATES CALCULATION**

<b>Type of Space</b>	<b>Class III Rate [A]</b>	<b>Weight Factor [B]</b>	<b>Rate [C=AxB]</b>	<b>Airline Rented Space [D]</b>	<b>Total Airline Revenue [Cx D]</b>
<b><u>FY 2014-15</u></b>					
Class I	\$83.05	1.00	\$83.05	15,486	\$1,286,112
Class II	\$83.05	1.50	124.58	126,725	15,787,401
Class III	\$83.05	1.00	83.05	237,711	19,741,899
Class IV	\$83.05	0.50	41.53	214,609	8,912,712
Class V	\$83.05	0.25	20.76	12,656	262,739
Class VI	\$83.05	1.00	83.05	3,946	327,715
				<b>611,133</b>	<b>\$46,318,577</b>
<b><u>FY 2015-16</u></b>					
Class I	<b>\$84.90</b>	<b>1.00</b>	<b>\$84.90</b>	<b>15,671</b>	<b>\$1,330,468</b>
Class II	<b>\$84.90</b>	<b>1.50</b>	<b>127.35</b>	<b>126,305</b>	<b>16,084,942</b>
Class III	<b>\$84.90</b>	<b>1.00</b>	<b>84.90</b>	<b>236,252</b>	<b>20,057,795</b>
Class IV	<b>\$84.90</b>	<b>0.50</b>	<b>42.45</b>	<b>214,609</b>	<b>9,110,152</b>
Class V	<b>\$84.90</b>	<b>0.25</b>	<b>21.23</b>	<b>11,879</b>	<b>252,191</b>
Class VI	<b>\$84.90</b>	<b>1.00</b>	<b>84.90</b>	<b>3,950</b>	<b>335,355</b>
				<b>608,666</b>	<b>\$47,170,903</b>

## CUTE RATES MIAMI INTERNATIONAL AIRPORT FY 2016

### CUTE Gate Rates

- Infrastructure Fee—**\$0.02 per departing seat**
- Gate Usage Fee (CUTE Equipment Rental)—**\$0.19 per departing seat**

**Ticket Counter Usage Fee** – The Aviation Department began recovering CUTE costs through departing seats effective Oct. 1, 2014.

	<u>Fee per Departing Seat</u>	<u>Fee per ticket counter hour *</u>
CUTE Equipment Rental	\$0.54	\$5.11
Class I Rental Expense for Ticket Counter	0.39	3.61
Class IV Rental Expense for Baggage Makeup	0.86	8.82
CUTE Dynamic Signage (Back-wall Displays)	<u>0.03</u>	<u>0.29</u>
<b>Total</b>	<b><u>\$1.82</u></b>	<b><u>\$17.83</u></b>

Maximum daily rate per ticket counter - **\$213.84 (12 hours multiplied by Ticket Counter Usage Fee)\***

\* Applies to CUTE-exempt carriers only

### CUTE Dynamic Signage (Back-wall Displays)

- Maximum monthly rate - **\$50.00 per ticket counter position.**
- Annual rate for back-wall displays located within leased areas - **\$1,200.00 per display.**

**CUTE Back-office / Operations / Educational Equipment** – the monthly charge will apply to vendor-maintained CUTE equipment located in leased areas. Wiring and cabling installation will be charged separately.

- **Monthly Charge per Unit - \$198.86**

### Manual CUTE Ticket Counter Rates

Rates apply to airlines that use the CUTE ticket counters but process their passengers manually. This rate applies to General Aeronautical Service Permittee (GASPer) who process airlines that do not have a Terminal Agreement with MDAD.

- **Standard Manual Rate -**
  - \* **Wide-body aircraft (over 200 seats) - \$499.08 per flight**  
Based on seven ticket counters at four hours each = 7 x 4 x hourly ticket counter usage fee of \$17.83
  - \* **Narrow aircraft (101 seats through 200 seats) - \$285.19 per flight**  
Based on four ticket counters at four hours each = 4 x 4 x hourly ticket counter usage fee of \$17.83
  - \* **Regional Commuter aircraft (20 seats through 100 seats) - \$142.59 per flight**  
Based on two ticket counters at four hours each = 2 x 4 x hourly ticket counter usage fee of \$17.83
  - \* **Small Turbo aircraft (under 20 seats) - \$71.30 per flight**  
Based on two ticket counters at four hours each = 1 x 4 x hourly ticket counter usage fee of \$17.83
- **Unauthorized Manual Rate** – Airline is charged unauthorized rates if the CUTE system was available and they did not use it.
  - \* **Wide-body aircraft (over 200 seats) - \$998.16 per flight**  
Based on seven ticket counters at four hours each = 7 x 4 x hourly ticket counter usage fee of \$17.83 + 100% premium
  - \* **Narrow aircraft (101 seats through 200 seats) - \$570.38 per flight**  
Based on four ticket counters at four hours each = 4 x 4 x hourly ticket counter usage fee of \$17.83 + 100% premium
  - \* **Regional Commuter aircraft (20 seats through 100 seats) - \$285.19 per flight**  
Based on four ticket counters at four hours each = 2 x 4 x hourly ticket counter usage fee of \$17.83 + 100% premium
  - \* **Small Turbo aircraft (under 20 seats) - \$142.59 per flight**  
Based on four ticket counters at four hours each = 1 x 4 x hourly ticket counter usage fee of \$17.83 + 100% premium

**CUTE RATES**  
**MIAMI INTERNATIONAL AIRPORT**  
**FY 2016**

**Miscellaneous CUTE Charges**

**Hourly Charges (TWOV lounges, ITI lounges, ITI baggage, and Ramp Baggage Make-up) -** the fee shall be \$5.10 per hour for each respective area effective October 1, 2015.

**Cruise Check-In Facility at Miami Seaport maintenance charges (added to CUTE hourly usage fees)** – on-site maintenance single circuit is \$10.00 per hour with back-up circuit at \$10.34 per hour. For on-call maintenance (response within two hours) the fee is \$3.16 per hour for single circuit and \$3.51 per hour for back-up circuit.

**CUTE Rate Based on Departing Aircraft Seat** – A CUTE rate of \$1.79 per departing aircraft seat will be charged to non-exempt carriers effective October 1, 2015.

**CUSS Charges (Common Use Self Service)**

**Per Transaction Fee** – the fee shall be \$0.58 per transaction at all Miami-Dade Aviation Department common use CUSS units.

**Monthly Fee (Desktop Unit)** – The fee shall be **\$55.46 per unit, per month.** Includes hardware/software costs and operation & maintenance costs.

**Monthly Fee (Standalone Unit)** – The fee shall be **\$97.91 per unit, per month.** Includes hardware/software costs, 6 sq ft of class I space at current rate and operation & maintenance costs.

**Closed-Circuit Television (CCTV)**

**Cameras**

- PTZ (Pan-Tilt-Zoom) \$24.00 each, per month
- Fixed \$16.00 each, per month

**Viewing/Workstations**

- Cellstack/NICE (1) \$614.00 each, per month
- Cellstack (2) \$553.00 each, per month
- NICE (3) \$461.00 each, per month

**Recording – Per Port**

- NICE Pro (30-day recording) \$14.00 each, per month
- NICE Harmony (20-day recording) \$9.00 each, per month

(1) *Required for recording*

(2) *Digital quality viewing without recording capability*

(3) *Standard quality viewing without recording capability*

**CALCULATION OF CUTE FEES  
MIAMI-DADE AVIATION DEPARTMENT  
For Fiscal Year Ending September 30**

		Budget			
		FY2015		FY2016	
Infrastructure Fee (included in Concourse Use Fee)					
Operating Costs		\$	482,721	\$	438,946
Equipment Costs (Core Room Hardware/Servers)			-		-
	[A]	\$	482,721	\$	438,946
All Departing Seats Estimate	[B]		25,500,504		26,004,016
Cost per Departing Seat	[A/B]	\$	0.02	\$	0.02
Gate Usage Fee					
Operating Costs		\$	1,036,175	\$	942,212
Training Cost Allocation (5)			47,201		44,802
Telecom Charges			30,672		30,672
Total Costs	[C]	\$	1,114,049	\$	1,017,686
CUTE Airlines Departing Seats Estimate	[D]		5,754,426		5,452,576
Gate Usage Fee per Departing Seat	[C/D]	\$	0.19	\$	0.19
Ticket Counter Usage Fee					
Operating Costs	[a]	\$	3,150,854	\$	2,865,127
Training Cost Allocation (5)	[a]		141,142		133,967
Telecom Charges	[a]		63,504		63,504
Ticket Counter Terminal Space Cost			2,201,024		2,166,648
CUTE Class I Terminal Space (sq. ft.) (1)		33,128		31,900	
x Class I Terminal Rental Rate		\$ 83.05		\$ 84.90	
x Vacancy Factor applied to CUTE Class I sq ft		20%		20%	
Outbound Bag Makeup Terminal Space (sq. ft.)			4,746,754		4,851,908
CUTE Class IV Terminal Space in sq ft.		114,297		114,297	
x Class IV Terminal Rental Rate		\$ 41.53		\$ 42.45	
Total Ticket Counter CUTE Costs	[E]	\$	10,303,278	\$	10,081,153
CUTE Ticket Counter Hours Estimate (2)	[F]		600,000		600,000
CUTE Ticket Counter Hours Estimate without Outbd BMU (3)	[G]		550,000		550,000
		Hourly	Per Seat (6)	Hourly	Per Seat (6)
Ticket Counter Usage Fee	[E/F]	\$ 17.89	\$ 1.77	\$ 17.54	\$ 1.79
Ticket Counter Usage Fee W/O OUTBOUND BMU	[E/G]	\$ 9.26	\$ 0.97	\$ 8.72	\$ 0.96
Hourly Eqpmt Fee Chg for VIP Lounge	[a/F]	\$ 5.59	n/a	\$ 5.10	n/a
VIP Lounge Eqpmt Monthly Charge Cap (4)		\$ 969.37	n/a	\$ 884.75	n/a
Airline Back Office / Operations Eqpmt Monthly Charge		\$ 218.69	n/a	\$ 198.86	n/a
Common Use Display Charge					
Operating Costs		\$	172,330	\$	172,330
CUTE Ticket Counter Hours (2) or Seats Estimate	[H]		600,000		600,000
			5,754,426		5,452,576
Display Charge per Position	[G/H]	\$	0.29	\$	0.03
Exempt Airline Monthly Charge Cap		\$	50.00	n/a	n/a

- (1) Decrease in FY2016 CUTE ticket counter space is due to additional American Airlines exempt status ticket counter space.  
Exempt status ticket counter space is excluded from CUTE rate calculation.
- (2) Based on an average of 4 hours per day per ticket counter position for 360 days.
- (3) Same assumptions as footnote # (2) above, but excludes the CUTE ticket counter positions that feed to the AA/NTD baggage system.
- (4) Based on hourly equipment rate multiplied by 40 hours per week multiplied by 52 weeks per year (2,080 hrs) divided by 12 months.
- (5) Training costs include MDAD Training Room space rental at Class III rates.
- (6) Effective Oct. 1, 2014 MDAD began charging non-exempt carriers for ticket counter usage based on departing seats.

## LANDSIDE TAB



**PUBLIC AND EMPLOYEE PARKING  
AT MIAMI INTERNATIONAL AIRPORT  
AS OF OCTOBER 1, 2015**

**Public Parking**

Miami International Airport's parking facilities consist of two multi-level parking garages, identified as the DOLPHIN GARAGE and the FLAMINGO GARAGE.

**Standard Parking Rates:**

- \$2.00 for each 20 minute increment or part thereof to a maximum of \$17.00 per day.

**Valet Parking:**

- \$18.00 for the first 1-3 hours or part thereof. After 3 hours, the daily maximum will be \$30.00 per day.

**Parking Space Reservation Charge:**

- \$10.00 per vehicle parking space. This is a prepaid fee and charged in addition to existing vehicle parking rates. The space reservation expires when vehicle exits the reserved parking space.

**Terminal**

Both the DOLPHIN GARAGE and the FLAMINGO GARAGE connect to the Terminal Building by moving sidewalks, located on the 3<sup>rd</sup> level of the garages.

**Disabled Parking**

Designated disabled permit parking and stroller permit parking is available on the 3<sup>rd</sup> level of the garages.

**Over-height Vehicles**

Over-height vehicles may use the "High-Vehicle" surface lot parking area located adjacent to the East side of the DOLPHIN GARAGE.

**PUBLIC AND EMPLOYEE PARKING  
AT MIAMI INTERNATIONAL AIRPORT  
AS OF OCTOBER 1, 2015**

**Employee Parking**

**Employee Parking Decals** - the fee shall be **\$30.00 per decal per month**. (Park 8 and Employee Parking Lot)

**Motorcycle Parking Fee** – the fee shall be **\$180.00 per decal per year**.

**Long-term Parking Magnetic Cards** - the fee shall be **\$100.00 per employee, per month**.

**Contractor Parking**

**Contractor Parking Cards** - the fee shall be **\$200.00 per card, per year**.

**Towed Vehicles**

The fee for towed vehicles shall be **\$50.00 per occurrence**.

**GROUND TRANSPORTATION FEES  
MIAMI INTERNATIONAL AIRPORT  
AS OF OCTOBER 1, 2015**

SUB-CLASS	FEE
<i>The following deposit applies to all sub-classes except for Class D:</i> <ul style="list-style-type: none"> <li>• \$500 security deposit per company with less than 10 vehicles</li> <li>• \$1,000 per company with 10 or more vehicles</li> <li>• MDAD may waive the security deposit requirement for a company paying fees on a per trip basis and having a maximum of one trip per month</li> </ul>	
<b>Shuttle/Delivery Service</b>	
A1—Bus	\$7.00 per trip
A2—Van	\$3.00 per trip
A3—Limo	\$3.00 per trip
B1—Hotel/Motel (Small)	\$1.00 per trip
B2—Hotel/Motel (Large)	\$2.00 per trip
B3—Commercial (Small)	\$2.50 per trip
B4—Commercial (Large)	\$3.00 per trip
C1—Crew Service (Small)	\$1.00 per trip
C2—Crew Service (Large)	\$2.00 per trip
Class D—Delivery Service	MDAD may assess a fee within the range of \$1-\$12.00 which reflects the appropriate operating costs applicable to the service performed and the size of vehicle used.
<b>Off-Airport Rental Car Companies</b>	
B5—Off-airport Car Rental Companies with less than \$500,000 annual MIA gross revenues	\$3.00 for each MIA contract
B6—Off-airport Car Rental Companies with MIA gross revenues between \$500,000 and \$4.9 million annually	4.5% of gross revenues from MIA passengers
B7—Off-airport Car Rental Companies with MIA gross revenues in excess of \$5 million annually	7.5% of gross revenues from MIA passengers
<b>Off-Airport Parking Lot Operators</b>	
B8—Off Airport Parking Lot Operators (Small vans)	Upper Level—\$1.00 per trip Lower Level—\$2.50 per trip
B9—Off Airport Parking Lot Operators (Large vans)	Upper Level—\$2.00 per trip Lower Level—\$3.00 per trip
<b>Expedite Service Vehicle</b>	
Class E Vehicles (companies with courier vehicles, armored cars and expedite late baggage vehicles)	\$200.00 annual permit fee per vehicle

Class E permits also include food vendors who pay a \$360.00 yearly fee for the annual permit, which expires each December 31st.

For sub-class B7 having *less* than \$20 million in annual gross revenues from MIA passengers, the Aviation Department charges 7.5% of gross revenues. For sub-class B7 having \$20 million or *more* in annual gross revenues from MIA passengers, 9% of gross revenues is charged.

## **GROUND TRANSPORTATION FEES (continued)**

- **Mobile Food Truck Vendor Fee**—the annual fee shall be **\$360.00 per vehicle**. This fee will be assessed to mobile food truck vendors that sell food to the labor force at MIA.
- **Taxicab Operation Fee**—the fee shall be **\$2.00 per trip**.
- **Ground Transportation Permit Renewal Fee** – the annual fee shall be **\$100.00 per permit**.
- **Ground Transportation Permit Late Renewal Fee** – the fee shall be **\$100.00 per permit**.

## **AUTHORITY TO REVISE OR ADJUST BUILDING RENTAL RATES DURING PERIOD FOLLOWING BOARD OF COUNTY COMMISSIONERS ACTION AND BEFORE NEXT APPROVAL BY BOARD BASED ON REVISED APPRAISAL**

By establishing and authorizing the imposition of the rental rates reflected on the attached appraisal document or in this Budget, the Board also establishes and authorizes the Aviation Department to impose, during the period following the Board's action and before the next approval by the Board of rental rates for the properties, any revised rental rates that are based on appraisals of any of the properties described in the attached document or the Budget that are obtained as a result of an appraisal performed under the authority of Board's action or agreement previously approved by the Board.

## Miami International Airport Land Rental Rates Effective as of October 1, 2015

The following rental rates are to be effective October 1, 2015 and applied to all present and future leaseholds, when applicable. A map of land zone areas is attached.

Land Zone	Actual 2014-2015 Rate	Proposed 2015-2016 Rate
1 Airport	\$1.65 per sq.ft.	\$1.75 per sq.ft.
1a Airport – vacant land with aircraft access	N/A	N/A
2 Commercial sites at SEC of NW 36 <sup>th</sup> St & NW 72 <sup>nd</sup> Ave	\$2.10 per sq.ft.	\$2.20 per sq.ft.
3 N.W. 21 <sup>st</sup> St. and N.W. 39 <sup>th</sup> Avenue	\$2.75 per sq.ft.	\$2.75 per sq.ft.
4 Fuel Farm	\$2.00 per sq.ft.	\$2.10 per sq.ft.
5 N.W. corner of N.W. 97 <sup>th</sup> Avenue & N.W. 54 <sup>th</sup> Street	\$2.40 per sq.ft.	\$2.50 per sq.ft.
6 Jai-Alai fronton land area & NW 36 <sup>th</sup> Street Frontage	\$2.10 per sq.ft.	\$2.20 per sq.ft.
7 Commercial Sites on NW 12 <sup>th</sup> St & North of NW 36 <sup>th</sup> St	\$1.65 per sq.ft.	\$1.75 per sq.ft.

**NOTE:** There is an additional charge of \$.10 per square foot where special services are provided, such as high intensity lighting, power cost, etc.

## Paving Rates

Paving rates are in addition to land rental.

Type of Paving	Actual 2014-2015 Rate	Proposed 2015-2016 Rate
Standard (Vehicular) Existing	\$.30 per sq.ft.	\$.35 per sq.ft.
Heavy Duty (Aircraft) Existing	\$.75 per sq.ft.	\$.80 per sq.ft.

## Building Rental Rates Miami International Airport Effective as of October 1, 2015

The following are the estimated annual square foot building rates for the period October 1, 2015 to September 30, 2016. **These rates exclude land, water, sewer, electric, and common area janitorial except where footnoted.**

Building #. (Old bldg. #)	Building Description	Actual Rate 2014-2015	Proposed Rate 2015-2016
49	Offices (A/C) Shop (A/C)	\$6.00 \$6.00	\$6.00 \$6.00
700	Cargo (Non A/C) Offices (A/C) 2nd Floor Offices (A/C) 1st Floor 3 <sup>rd</sup> Floor Storage (storage only)*	\$10.00 (11) \$11.50 (11) \$15.00 (11) \$10.00	\$10.00 (11) \$11.50 (11) \$15.00 (11) \$10.00
701	Cargo (Non A/C) Offices (A/C) 2nd Floor Offices (A/C) 1st Floor 3 <sup>rd</sup> Floor Storage (storage only)*	\$10.00 (11) \$11.50 (11) \$15.00 (11) \$10.00	\$10.00 (11) \$11.50 (11) \$15.00 (11) \$10.00
702	Cargo (Non A/C) Offices (A/C) 2nd Floor Offices (A/C) 1st Floor 3 <sup>rd</sup> Floor Storage (storage only)*	\$10.00 (11) \$11.50 (11) \$15.00 (11) \$10.00	\$10.00 (11) \$11.50 (11) \$15.00 (11) \$10.00
703 (2120)	Engine Test Cell Bldg.—Storage Test Cells (in compliance with 40-year recertification) • Reciprocating-Dynamometer Cells  • Large Jet Engine Cells	\$5.25 (12)  \$11,000 per month (8)(13) \$13,000 per month (8)(13)	\$5.25 (12)  \$11,000 per month (8)(13) \$13,000 per month (8)(13)
703A	Test Cell	\$13,000 per month	\$13,000 per month
704 (2121)	Warehouse (Non A/C)/Cargo (Non A/C) Offices (A/C)/Shop(A/C)/Storage(A/C)	\$5.75 (12) \$6.25 (12)	\$5.75 (12) \$6.25 (12)
706	Cargo (Non A/C) Offices (A/C) 3 <sup>rd</sup> Floor Storage (storage only) <sup>2</sup>	\$15.50 (11) \$15.00 (11) \$10.00	\$16.00 (11) \$15.00 (11) \$10.00
707	Cargo (Non A/C) Offices (A/C) 3 <sup>rd</sup> Floor Storage (storage only) <sup>2</sup>	\$15.50 (11) \$15.00 (11) \$10.00	\$16.00 (11) \$15.00 (11) \$10.00
708	Cargo (Non A/C) Offices (A/C) 3 <sup>rd</sup> Floor Storage (storage only) <sup>2</sup>	\$15.50 (11) \$15.00 (11) \$10.00	\$16.00 (11) \$15.00 (11) \$10.00

**\* No air conditioning is provided and only electric for minimal lighting.**

***Building Rental Rates Miami International Airport  
Effective as of October 1, 2015 (continued)***

<b>Building #. (Old bldg. #)</b>	<b>Building Description</b>	<b>Actual Rate 2014-2015</b>	<b>Proposed Rate 2015-2016</b>
709	LanChile (Airis)	Tenant constructed building	
710	LanChile (Airis)	Tenant constructed building	
711	Arrow Cargo (Aeroterm)	Tenant constructed building	
712	Arrow Cargo (AMB Codina)	Tenant constructed building	
714	Cargo (Non A/C) Offices (A/C)	\$12.75 \$13.25	\$12.75 \$13.25
716A	Cargo (Non A/C) Offices (A/C) 2nd Floor Offices (A/C) 1st Floor	\$13.00 (11)(15) \$13.60 (11)(15) \$15.00 (11)	\$13.00 (11)(15) \$13.60 (11)(15) \$15.00 (11)
716B-J	Cargo (Non A/C) Offices (A/C) 2nd Floor Offices (A/C) 1st Floor	\$12.00 (11)(15) \$12.60 (11)(15) \$15.00 (11)	\$12.00 (11)(15) \$12.60 (11)(15) \$15.00 (11)
719 (2122)	Governmental Service Bldg. - CCC	\$19.50 (3)	\$19.50 (3)
741 (2204)	Decompression chamber	\$45,000 per year	\$45,000 per year
805	Cargo (Non A/C) Offices (A/C)	\$12.00 \$12.00	\$12.00 \$12.00
807	UPS (Cargo)	Tenant constructed building	
812	PPQ Building	MDAD/tenant constructed building	
815	USDA Veterinary Services	MDAD/tenant constructed building	
820 (1011)	Warehouse (Non A/C) Offices (A/C)	\$9.00 \$10.00	\$9.00 \$10.00
831	Office/Warehouse (FedEx)	Tenant constructed building	
836 (1054)	GSE Office/shop (AC)	\$13.50	\$13.50
839	Hangar (Landmark Aviation) Offices (A/C)	\$12.00 \$16.00	\$12.00 \$16.00
840	Landmark Aviation (Terminal)	\$20.00	\$20.00
844 (101)	Hangar - Storage (Non A/C) Offices (A/C) Storage (A/C)	\$9.25 (1) \$11.75 \$6.75	\$9.25 (1) \$11.75 \$6.75
845 (100)	Offices (A/C) Warehouse (Non-A/C) Warehouse (A/C) Warehouse Office (A/C) Simulator (A/C) Atrium Space—1st Floor (A/C) Atrium Space—Above 1st Floor (A/C)	\$15.00 (3) \$10.60 (3) \$12.00 (3) \$12.00 (3) \$12.79 \$19.00 (3) \$19.00 (3)	\$16.00 (3) \$10.60 (3) \$12.00 (3) \$12.00 (3) \$12.79 \$19.00 (3) \$19.00 (3)
850	AAR ACS (Maintenance Hangar)	Tenant constructed building	
855 (53)	Storage (A/C)	\$5.75	\$5.75
856 (52)	Storage (A/C)	\$5.50	\$5.50
857 (55)	Wash Rack & Drum Storage	\$4.50	\$4.50

\* Rent includes land, water, sewer and common area janitorial.



**Building Rental Rates Miami International Airport**  
**Effective as of October 1, 2015 (continued)**

Building #. (Old bldg. #)	Building Description	Actual Rate 2014-2015	Proposed Rate 2015-2016
861-862 (60)	Aircraft—Hangars (#6 and #7) Shops (A/C) Storage (A/C) Offices (A/C)	\$10.00 (1) (12) \$5.25 (12) \$5.25 (12) \$6.50 (12)	\$10.00 (1) (12) \$5.25 (12) \$5.25 (12) \$6.50 (12)
863 (60-A)	Engine Overhaul and Service Storage (A/C) 2nd Floor Offices (A/C) 1 <sup>st</sup> Floor Offices (A/C)	\$5.50 \$4.00 \$10.00 \$8.00	\$5.50 \$4.00 (22) \$10.00 \$8.00
871 (48)	Hangar (Non A/C) Office (A/C) Shop (A/C) Storage (A/C)	\$9.00 (1) \$5.50 \$4.25 \$4.25	\$9.00 (1) \$5.50 \$4.25 (22) \$4.25 (22)
875 (43)	Flight Academy Office (A/C) Pan Am Office (A/C) Individual tenants Simulator Bays (A/C)	\$10.50 (19) \$13.75 \$9.00	\$10.50 (19) \$15.00 (3) \$9.00 <sup>2</sup>
880-882 (30A-30B)	Simulators (A/C) Office Building (A/C) Storage	Scheduled for demolition. Out for permitting	Demolished
881 (30)	Office Building (A/C) Simulators	\$8.50 \$9.00	Scheduled for demolition by EOY 2015
888 (35-35A)	Maintenance and Training (A/C) Office Space (A/C)	\$5.75	\$5.75
890 (25)	Hangar (Non A/C) Office Space (A/C) Storage (A/C) Shops (A/C)	Tenant owned building	
891 (24)	First Floor: Maintenance-Shops (A/C) Second Floor: Shops (A/C) Third Floor: Shops (A/C) Fourth Floor: Storage (Non A/C)	Tenant owned building	
896 (22)	Hangar—Maintenance (Non A/C) Office Space (A/C) Shops—Maintenance (A/C)  Third Floor: Storage Composite Shop Paint Booth	\$10.00 (1) \$7.75 \$5.75  \$4.75 \$10.00 \$10.00	\$10.00 (1) \$7.75 \$5.75  \$3.00 \$10.00 \$10.00

<sup>2</sup> Rate does not include electricity.

***Building Rental Rates Miami International Airport***  
***Effective as of October 1, 2015 (continued)***

<b>Building #. (Old bldg. #)</b>	<b>Building Description</b>	<b>Actual Rate 2014-2015</b>	<b>Proposed Rate 2015-2016</b>
909	Flight Training Facility (Airbus)	Tenant Constructed Building	
916	Cargo Warehouse (Development)	Tenant Constructed Building	
919 (5A)	Office - Entire Building (A/C)	\$10.50	\$10.50
	Office - Per Floor or less (A/C)	\$13.00	\$13.00
	Office - Second Floor (Full Service)	\$21.00	\$21.00
	Storage (Non-A/C)	\$6.00	\$6.00 (22)
	Loading Dock	\$1.75	\$1.75
2082	Warehouse (El Dorado)	\$2.50	\$2.50
	Offices (A/C)	\$2.50	\$2.50
3010	Cabstand Cafe (A/C)	\$30.00 (5)	\$30.00 (5)
3030	Offices	\$10.00 (12)	\$10.00 (12)
3030A	Offices (A/C)—Wing of 3030	\$8.50	\$8.50
3032	Cafeteria (Non A/C)	\$4.75	\$4.75
	Cafeteria (A/C)	\$6.50	\$6.50
3033	Police Station (A/C)	\$10.00	\$10.00
3037	Maintenance-Garage (Non A/C)	\$6.00	\$6.00
	Offices (A/C)	\$6.50	\$6.50
3038	Building Services—Maintenance/Office (A/C)	\$6.50	\$6.50
3040	Maintenance Shops (Non A/C) and Offices (A/C)	\$6.60 (19)	\$6.60 (19)
3034	Triturator	\$36,000 (10)	\$36,000 (10)

\* The 2006 rate included land, whereas the rates from 2010 and after are for the building only and the land rate and paving rate is charged separately.

***Building Rental Rates Miami International Airport  
As of October 1, 2015 (continued)***

<b>Building #. (Old bldg. #)</b>	<b>Building Description</b>	<b>Actual Rate 2014-2015</b>	<b>Proposed Rate 2015-2016</b>
3046	Offices (A/C) Shop (A/C)	\$10.00 \$6.25	\$10.00 \$6.25 (22)
3047	Offices (A/C)	\$10.00	\$10.00
3048	Offices (A/C)	\$10.00	\$10.00
3049	Maintenance Garage (Non A/C)	\$7.00	\$7.00
3050	Administration Building (Multiple Tenancy)	\$14.25 (18)	\$14.25 (18)
3074	In-flight Caterers: Kitchen (Non A/C) Kitchen (A/C)	\$8.50 \$10.50	\$8.50 (22)
3077	Triturator	\$36,000/yr (10)	\$36,000/yr (10)
3078	Fuel Building (A/C) Offices (A/C)	\$10.00 \$10.25	\$10.00 \$10.25
3089	Parking Garage	\$50.00/mo. (4)	\$55.00/mo. (4)
3091	Maintenance/Offices (A/C)	\$7.75	\$7.75
3094	Parking Garage	\$50.00/mo.(4)	\$55.00/mo.(4)
3095-A	*American Airlines Hangar Hangar Area (Non A/C) – 1 <sup>st</sup> Floor Office – 1 <sup>st</sup> and 2 <sup>nd</sup> Floors (A/C) Shops, Storage 1st and 2 <sup>nd</sup> Floors	By agreement  \$11.00 \$9.00 \$8.00	By agreement  \$11.75 \$9.00 (22) \$8.00 (22)
3095-B	Offices (as renovated): Offices—Entire Building (A/C) Offices—Per Floor (A/C) Offices—Penthouse (A/C)	\$11.00 \$17.00 (3) \$20.00 (3)	\$11.00 \$17.00 (3) \$20.00 (3)
3100	Maintenance Garage (Non A/C)	\$7.00	\$7.00
3101	Maintenance Garage—Storage (Non A/C)	\$6.00	\$6.00
3110	Offices—Security	\$21.00	\$21.00
3150	Offices (A/C)	\$11.50	\$11.50
3151	Maintenance—Shop (Non A/C) Offices (A/C)	\$6.00 \$11.00	\$6.00 \$11.00
3152	Service Station (Non A/C)	\$5.75	\$5.75
3153	Car Wash Building	\$5.75	\$5.75
3241	RCC Office (A/C) RCC Storage (A/C)	\$26.00 (20) \$15.00 (20)	\$26.00 (20) \$15.00 (20)

***\* This rental rate is set by agreement with American Airlines and is adjusted annually by CPI***

***Building Rental Rates Miami International Airport  
Effective as of October 1, 2015 (continued)***

<b>Building #. (Old bldg. #)</b>	<b>Building Description</b>	<b>Actual Rate 2014-2015</b>	<b>Proposed Rate 2015-2016</b>
4001	Traffic Control Center	\$13.00	\$13.00
4002	Public Works Office	\$12.00	\$12.00
4003	Corrections Office (A/C)	\$7.50	\$7.50
4003A	Offices (A/C) Storage (Non A/C)	\$7.00 \$6.00	\$7.00 \$6.00
4004	Sign Shop (Non A/C)	\$6.00	\$6.00
MIC	Platform - Unfinished space (21)	\$30.00	\$30.00

**Loading Dock**

Loading dock area has an additional rate of \$1.75 per square foot.

**Utility Rates**

The rental rates herein exclude utilities (water, sewer and electric) except as footnoted. Utilities shall be applied as a separate charge.

**Trailer Parking & Modular Units**

Trailer parking has a rate of \$200.00 per space per month for single wide trailers, \$400.00 per space per month for double wide trailers and \$600.00 per space per month for a triple wide. Modular units are authorized for temporary use by tenants for office or storage purposes, preceding and/or during construction, and have the rates of \$200.00 per space per month for single wide trailers, \$400.00 per space per month for double wide trailers and \$600.00 per space per month for a triple wide.

**Automobile Parking**

Automobile parking (grade level & non-garage space) has a charge of \$50.00 per space per month. Limousines that occupy no more than a standard parking space/area will be charged \$50.00 per month. Larger limousines have a rate of \$90.00 per month. Tour buses and buses in excess of eight (8) feet wide and 18 feet long have a rate of \$175.00 per month.

**Full Service**

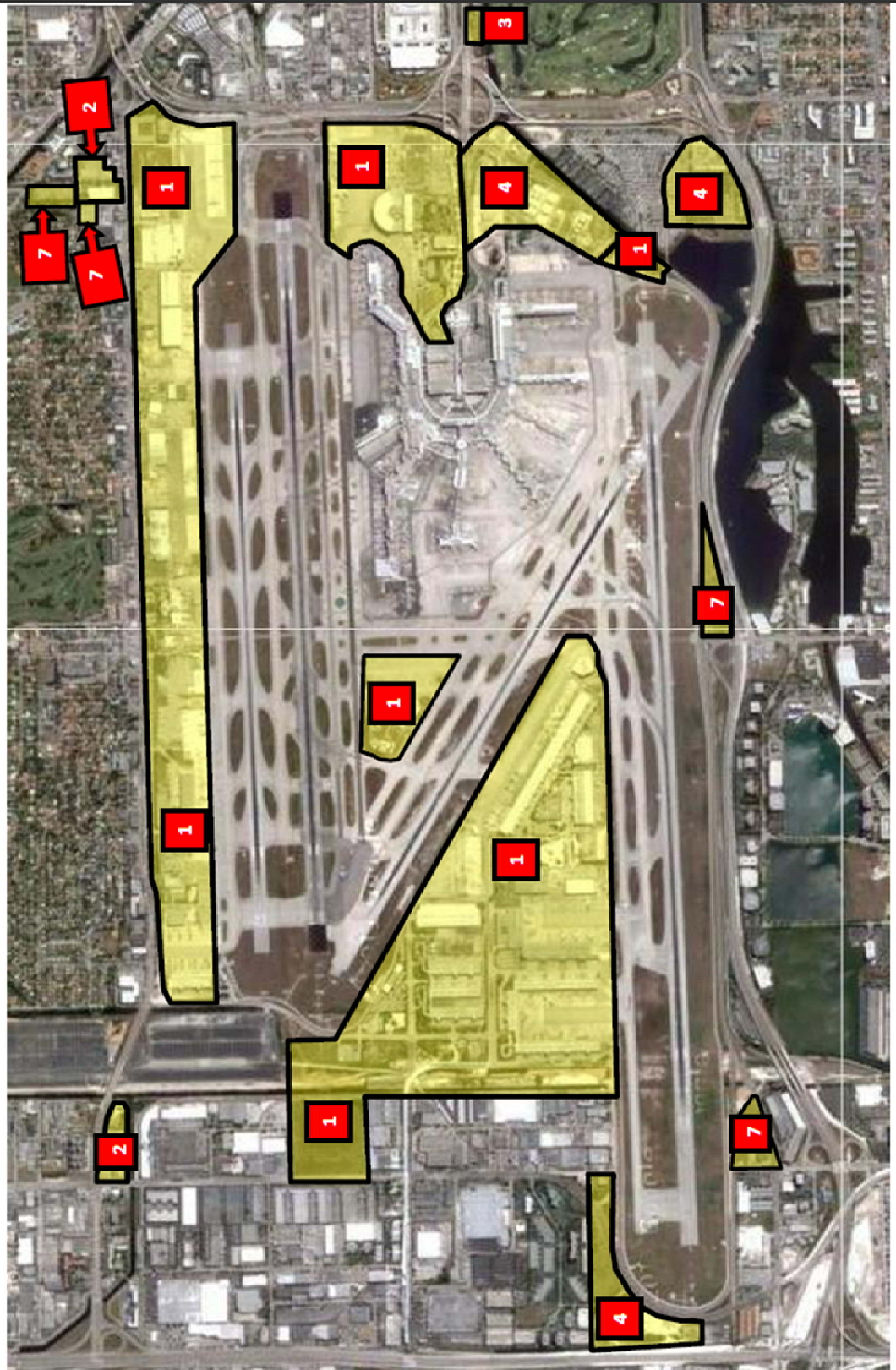
This includes land rent, janitorial and utilities.

## **Footnotes**

- 1) Non-airline tenants shall pay the said per square foot rate or 3% of all gross revenues produced from providing aircraft maintenance services to others, whichever is greater.  
Airline tenants shall pay 3% of all gross revenues produced from providing aircraft maintenance services to others in addition to the said per square foot rental rates.
- 2) Rent includes land, electricity, and common area janitorial.
- 3) Rent includes land, electricity, water, sewer and common area janitorial.
- 4) Rent per position per month.
- 5) Tenant pays minimum guarantee.
- 6) The rental rate reflects the "As Is" condition of the building. The building has limited fire and electrical systems. (Not used in 2005.)
- 7) Rent includes water, sewer, electricity, and common area janitorial. (Not used in 2005.)
- 8) Rent includes land.
- 9) The rent includes water and sewer. (Not used in 2005.)
- 10) Rates based on approved actual audited construction costs.
- 11) Rent includes common area janitorial, excludes land.
- 12) Additional rent may be applicable to recover costs of 40-year recertification and costs of repairs to comply with life safety codes.
- 13) Rate includes amortization of 40-year recertification and costs of repairs to comply with life safety codes.
- 14) Rate based on competitive bidding.
- 15) Appraised rate includes a charge of \$.10 per square foot as a trash removal fee.
- 16) No longer applicable (*was formerly "Rental based on 20-year lease. Adjusted annually on January 1st"*)
- 17) No longer applicable (*was formerly "Hangar is currently unusable and can only be used as aircraft parking until roof repairs are completed."*)
- 18) Includes land rent and janitorial.
- 19) Includes common area janitorial.
- 20) Includes land rent and janitorial. Utilities are paid by rental car agencies in MIC.
- 21) Tenant pays for all tenant improvements and for utilities.
- 22) If A/C space the tenant pays applicable electric and is responsible for A/C repair and replacement



LAND ZONE MAP – ZONES 1, 2, 3, 4 & 7



## FUEL FARM TAB

**FUEL FLOWAGE FEES  
MIAMI INTERNATIONAL AIRPORT  
AS OF OCTOBER 1, 2015**

		<b>STORAGE</b>	<b>TRUCK</b>	<b>HYDRANT</b>
Direct Expenses		\$2,818,694	\$629,639	\$843,590
Indirect Expenses		740,440	0	30,964
Total Operating Expenses		\$3,559,134	\$629,639	\$874,554
Debt Service		2,526,723	563,297	6,093,955
Reserve Maintenance Fund Deposit		--	--	--
Management Fee		458,412		
Less: County Credit				
<b>Total Requirement</b>	<b>[A]</b>	<b>\$6,544,269</b>	<b>\$1,192,936</b>	<b>\$6,968,509</b>
Estimated Gallonage	<b>[B]</b>	<b>882,693,590</b>	<b>249,361,670</b>	<b>633,331,920</b>
<b>Total Cost per Gallon</b>	<b>[C=A/B]</b>	<b>\$0.007414</b>	<b>\$0.004784</b>	<b>\$0.011003</b>
<b>Add Storage (a)</b>	<b>[D]</b>		<b>\$0.007414</b>	<b>\$0.007414</b>
<b>Fuel Flowage Fee</b>	<b>[C+D]</b>		<b>\$0.012198</b>	<b>\$0.018417</b>

(a) Storage costs are spread amongst the truck and hydrant users equally.

**Fuel Flowage Fee Calculation Explanation**

Because MDAD operates the fuel farm at MIA, it strives to recover the operating and capital costs related to the fuel farm directly from the fuel consumers through the fuel flowage fee. The operating costs are determined through the annual budget process by a fuel management company and reviewed by the Environmental Division. The cost is allocated amongst the following three areas: storage (represents the cost related to the above ground fuel storage tanks owned by MDAD), hydrant fueling (represents any costs related to providing fuel to air carriers through the hydrant system) and truck (represents any costs related to providing fuel to air carriers through fuel trucks rather than using the hydrant system). In addition, the costs of any assets acquired for the fuel farm are categorized by these three areas depending on how the asset is utilized. These assets are then included in the costs by amortizing them over their useful life using MDAD's current cost of capital. After aggregating these costs, a fuel flowage fee is calculated by dividing these costs by the estimated gallons to be purchased (either through truck or hydrant) during the fiscal year.

A separate fuel flowage fee is charged for general aviation users.



## GENERAL AVIATION TAB

**GENERAL AVIATION AIRPORT FEES AND CHARGES  
MIAMI INTERNATIONAL AIRPORT  
AS OF OCTOBER 1, 2015**

**Operational Closure Fee**—a fee of **\$4,800.00 per day (or portion thereof), or \$200.00 per hour for government entities** shall be required for operational closure at the Training and Transition Airport (or part thereof) or General Aviation Airport (or part thereof) to cover costs incurred by safety officer and vehicle required by the Federal Aviation Administration.

**Aerial Advertising Fee**—a fee of **\$14.00** will be charged for aerial advertising (banner towing) at the General Aviation Airports. This fee will apply to the combination of banner pick-up and recovery, and will not exceed three (3) charges per day, per aircraft.

**Aircraft Parking at General Aviation Airports**— For M-1 aircraft, the same rates charged at Miami International Airport for 1 – 5 days. The M-1 daily base rate is currently **\$11.00 per day** and will apply for the entire parking period. For all other aircraft, the same rates charged at MIA but the rates shall increase over time as reflected on the attached aircraft parking rates schedule. Please reference the Aircraft Parking Rates in the Airside section of this book.

***SEE SCHEDULE AT THE END OF THE AIRSIDE SECTION FOR AIRCRAFT PARKING FEES WHICH ARE LISTED BY AIRCRAFT TYPE.***

**Conference Room Rental Fee (Miami Executive and Opa-Locka Airports)**—the rate for non-profit entities shall be **\$10.00 per use**; the rate for other than non-profit entities shall be **\$50.00 per use**; the use for all entities shall be limited to four (4) hours.

**Off-Road Vehicle Parking Fee at Training and Transition Airport**—the rate shall be **\$50.00 per vehicle, per fiscal year** (October 1 through September 30) **or fraction thereof**.

**Fuel flowage fee at the General Aviation Airports**—the rate shall be **\$0.08 per gallon**.

**Usage of Training and Transition Airport** is **\$28.00 per approach**.

**AOA (Aircraft Operating Area) Decal for General Aviation Airport Commercial Vehicles and Equipment** – the fee shall be **\$10.00 per decal**. AOA decals provide for the identification and regulation of airfield traffic. AOA decals also provide verification that vehicles and equipment are properly insured.

**AOA Decal for General Aviation Airport Privately Owned Vehicles and Equipment** – the fee shall be **\$5.00 per decal**. AOA decals provide for the identification and regulation of airfield traffic. AOA decals also provide verification that vehicles and equipment are properly insured.

**AOA Decal Replacement Fee for General Aviation Airport Vehicles and Equipment** – the fee shall be **\$10.00 per decal** and covers costs associated with research, cancellation and reissuance of each decal.

**AOA Decal Late Application Fee** – the fee shall be **\$10.00 per decal** and covers expedited processing times requiring additional manpower.

<b>Opa-Locka Executive Airport (OPF) 2016 Property Rental Summary</b>			
<b>LAND RENTAL</b>		<b>Rent/Sq. Ft./ Year</b>	
		Current	Market Rent
Aeronautical Land		\$0.22	\$0.23
Non-Aviation Land – minimum bid			
Runway 9L Clearance		\$0.60	\$0.60
Non-Aviation Land		\$0.90	\$0.90
<b>PAVEMENT RENTAL</b>		<b>Rent/Sq. Ft./ Year</b>	
		Current	Market Rent
Pavement		\$0.05	\$0.05
<b>Non-Aviation Land Lease Number/Tenant</b>		<b>Rent/Sq. Ft./ Year</b>	
		Current	Market Rent
Lease No. O-216 Miami-Dade Dept. of Corrections		\$1.10	\$1.00
Lease No. O-1519 Miami-Dade Water & Sewer Dept.		\$0.80	\$0.80
Lease No. O-8088 Schaecter – clear zone (2)		\$0.474	\$0.488
Lease No. O-7889 Miami Lakes Office Condo - clearzone		\$0.60	\$0.60
<b>BUILDING RENTAL (1) Aviation Tenants</b>		<b>Rent/Sq. Ft./ Year</b>	
		Current	Market Rent
Building	35	\$3.84	\$3.84
Building	39	\$4.13	\$4.13
Building	40E (3)	\$7.95	\$7.95
Building	40C (2)	\$7.65	\$7.65
Building	40W (1)	\$7.78	\$7.78
Building	41E (3)	\$7.65	\$7.65
Building	41C (2)	\$7.65	\$7.65
Building	41W (1)	\$7.65	\$7.65
Building	45	\$5.79	\$6.04
Building	46	\$9.86	\$10.36
Building	47	\$5.93	\$6.18
Building	102	\$0.00	\$0.00
Building	107 Office	\$19.00	\$19.00
Building	107 Dorm	\$19.00	\$19.00
Building	114	\$4.49	\$4.49
Building	119r	\$3.58	\$3.58
Building	180	\$2.75	\$2.75
Building	209r	\$3.75	\$3.75
Building	412	\$1.25	\$1.25
Building	413	\$2.75	\$2.75
Building	418	\$2.75	\$2.75
Note 1: Annual rent/SF excluding land or pavement			
Note 2: Rent subject to annual 3% increase			
Last Revised 6/9/2015			
OPF.FY16			

Miami Executive Airport (TMB) 2016 Property Rental Summary			
LAND RENTAL		Rent/Sq. Ft./ Year	
		Current	Market Rent
Aeronautical Land		\$0.19	\$0.20
Non-Aviation Land – minimum bid		\$1.20	\$1.30
PAVEMENT RENTAL		Rent/Sq. Ft./ Year	
		Current	Market Rent
Pavement		\$0.05	\$0.05
FARM LAND		Rent/Acre/ Year	
		Current	Market Rent
Farm Land – minimum bid		\$350	\$450
BUILDING RENTAL		Rent/Sq. Ft./ Year	
		Current	Market Rent
Aviation Tenants		Current	Market Rent
Building	102	\$3.33	\$3.33
Building	109	\$3.56	\$3.56
	109A	\$2.84	\$2.84
	109B	\$2.84	\$2.84
Building	114	\$3.28	\$3.28
Building	121	\$4.59	\$4.85
Building	123	\$4.53	\$4.79
Building	221	\$3.64	\$3.64
Building	222	\$2.04	\$2.04
Building	247	\$5.10	\$5.33
Building	504	\$4.93	\$4.93
Building	225	\$3.24	\$3.24
Building	226	\$1.24	\$1.24
Building	227	\$3.73	\$3.73
Building	228	\$5.50	\$5.70
Building	229	\$5.18	\$5.41
Building	501	\$7.58	\$7.83
Building	505	\$2.29	\$2.29
Building	507	\$15.00	\$16.00
Note 1: Annual CPI Rental Adjmt Per R-569-05 Last Revised 6/9/2015 TMB.FY16			

Homestead General Aviation Airport (X51) 2016 Property Rental Summary			
LAND RENTAL		Rent/Sq. Ft./ Year	
		Current	Market Rent
Aeronautical Land		\$0.07	\$0.07
PAVEMENT RENTAL		Rent/Sq. Ft./ Year	
		Current	Market Rent
Pavement		\$0.05	\$0.05
FARM LAND		Rent/Acre/ Year	
		Current	Market Rent
Farm Land – minimum bid		\$350	\$450
BUILDING RENTAL (1)		Rent/Sq. Ft./ Year	
Aviation Tenants		Current	Market Rent
Building	2	\$3.82	\$3.82
	3	\$2.65	\$2.65
Building	5	\$3.53	\$3.53
Building	10	\$3.82	\$3.82
Building	14	\$2.65	\$2.65
Note 1: Annual rent/SF excluding land or pavement			
X51.FY16			

## TELECOMMUNICATIONS TAB

**TELECOMMUNICATION FEES  
MIAMI INTERNATIONAL AIRPORT  
AS OF OCTOBER 1, 2015**

**Wireless Services Providers**—the annual rates shall be as follows:

- \$200,000.00 per cellular telephone (cell site)
- \$15,000.00 per micro antenna cell station

**Cable Television (CATV) Recovery Fee**

- \$60.00 per month per location at private offices and break-rooms
- \$215.00 per month per location at bars, restaurants and clubs

**Coaxial Cable Recovery Fee**

- Recovery Fee: \$35.00 per month
- Installation: \$150.00 per location
- Additional work: \$75.00 per hour plus material at cost plus 25%
- Equipment rental: \$20.00 per month, per television
- Unauthorized Service: \$1,000.00 per location per month plus monthly fee

**Wireless Data Port with Internet Access Fee** - \$47.50 per device, per month. (airport tenants, airlines and concessionaires)

**Wireless Network Access Fee for Multiple Users and Proprietary Tenants** - \$600.00 per month, to provide MDAD internet services and Wifi to airline lounges and other proprietary space.

**Offsite FIDS Rate**

**Network Port Costs (Monthly)**

- \$60.00 per PC connection. Each PC can drive two monitors.

**Equipment Rental Costs (Monthly)**

- \$50.60 for 42" LCD Display
- \$4.22 for monitor mounting and security locks
- \$13.49 per PC for Web FIDS
- \$3.37 per Video Extender to drive monitor from PC
- \$7.00 for Dual Video Output Card

**Telecommunications Fees**  
**Miami International Airport**  
**Voice and Data Network - STS Prices**  
**As of October 1, 2015**

Description	Mo. Unit Rental	Unit Install
<b>1) Switch Access</b>		
Meridian One Port	\$15.00	\$66.65
Advanced Features (Conference Calling, Speed Calling, Etc.)	Included w/Phone	Waived
<b>2) Network Access - Public</b>		
Single Line Access	\$22.50	\$66.65
Network Access	\$61.25	\$66.65
<b>3) System - Terminal Equipment</b>		
M3902 Basic Rel. 3 Digital Phone - 1 Line	\$7.45	\$133.30
M3903 Enhanced Rel. 3 Digital Phone - 3 Line	\$17.65	\$133.30
M3904 Professional Rel. 3 Phone - 5 Line	\$22.43	\$133.30
M3904 Add On Module	\$7.48	\$66.65
M3905 Call Center Telephone Rel 3	\$24.21	\$133.30
Analog Set	\$4.21	\$133.30
Companion Wireless Telephone	\$19.43	\$133.30
Conference Phone	\$34.66	\$133.30
Loud Bell	\$7.90	Per Quote
Handsfree Headset	\$13.36	\$133.30
<b>4) System - Other</b>		
Voice Mail Box	\$6.25	\$33.33
Authorization Code	\$1.25	\$33.33
Voice Cable (Fax, Modem, or Clock Programming)	\$3.28	\$66.65
Level 5 Data Cable	\$3.28	Per Quote
Ethernet Port	\$75.00	\$133.30
Internet Access 6MB - 1 Public Static IP Address	\$106.25	\$133.30
Internet Access 12MB - 1 Public Static IP Address	\$212.50	\$266.60
Additional Static IP Address	\$12.50	\$66.65
Wireless Data Ports with Internet Access	\$47.50	N/A
Engineering and Configuration of WiFi Ports	N/A	\$533.20
Wireless Network Access for Multiple Users	\$600.00	\$1,066.40
One Strand foot of Fiber (MM or SM) (')	\$0.019	Per Quote
SC Connector in Fiber Patch Panel	\$4.20	\$33.33
Fiber Termination	N/A	\$133.30
Copper Cable per pair foot (')	\$0.006	Per Quote
Black filled Copper Cables per pair foot (')	\$0.006	Per Quote
25 pair Copper Cable per pair foot (')	\$0.038	Per Quote

**Notes:**

1. All customers require a quote and MDAD contract for installation and monthly service.
2. Internet Access is a service provided using the MDAD LAN. An Ethernet Port and CAT 5 cable are required for the service.
3. Cable and conduit installation quoted if required for service.



**MISCELLANEOUS TAB**

**MISCELLANEOUS FEES AND CHARGES  
MIAMI INTERNATIONAL AIRPORT  
AS OF OCTOBER 1, 2015**

**Opportunity Fee**

**Opportunity Fee for Third-Party Vendors**—an opportunity fee will be imposed on third-party vendors contracted to provide services at MIA. This fee will be 7% of gross revenues derived from services provided at MIA.

Opportunity fees for aircraft Maintenance Repair Overhaul (MRO) operators will be 3% (three percent) of gross revenues. Opportunity fees for vending machine operators at all Miami-Dade County Airports will be 30% (thirty percent) of gross revenues. All other third-party vendors will be maintained at a 7% charge on all gross revenues. Opportunity fees on vending machines are being revised to reflect rates consistent with MIA concessionaire vending machines.

**Penalty Fee for Employing Unpermitted Service Vendors**

Penalty fees will be assessed to Aviation Department tenants who employ service vendors which operate without an Aviation Department permit.

- A penalty fee of \$500.00 will be assessed for the first occurrence, to be cured within 90 days.
- Incremental assessments of \$500.00 for each 30 days thereafter that the condition is not cured will be imposed.

Cure is defined as the service provider initiating and completing the permit process and paying all fees due from the period in which there was no permit. If the permit is being processed and the service provider is cooperating in good faith, no further penalties will be assessed after the first 90 days.

**Miscellaneous Air Carrier Fees**

- **Disruptive Passenger Fee**—airlines will be charged for actual costs incurred by the Department for disruptive passengers resulting from delayed or canceled flights.
- **GSE (Ground Service Equipment) Impoundment Fee**—a GSE impoundment fee will be imposed at a rate of \$10.00 per day and per GSE equipment for the first 15 days. From 16 to 30 days, the impoundment fee will increase to \$20.00 per day and per impoundment. At 31+ days, the impound fee will increase to \$40.00 per day and per impoundment until the impounded equipment has been released.
- **Aircraft Handling Chock Fee at the General Aviation Center or Remote Locations** – The fee shall be \$100.00 per aircraft.

## MISCELLANEOUS FEES AND CHARGES (continued)

### Employee (MDAD Tenant) ID Badge Fees

- **Employee Identification Badge Fee**—the fee shall be **\$20.00** for each ID badge Issuance and Renewal.
- **Lost or Unaccounted Employee ID Badge Fee**—the fee shall be **\$75.00 for the 1st replacement** and **\$100.00 for the 2nd replacement**.
- **Failure to NOTIFY and RETURN a Terminated Employee ID Badge Fee** – the fee shall be **\$100.00 per badge**.
- **TSA 5% Rule Violation Fee** – the fee shall be **\$125.00 per badge** and will be assessed when unreported lost, unaccounted for, or unreturned badges exceed 5% of total badges issued. This fee will not apply to badges already charged under the “Lost or Unaccounted for” rule.
- **Fingerprinting Fee**—the fee shall be **\$38.00 per individual** fingerprinted. Of this amount, \$29.00 is forwarded to TSA while MDAD retains \$9.00 for administrative fee.

### Airside Vehicle, Training and Decal/Permit Replacement Recommended Fees

- **Aircraft Operating Area (AOA) Decals** – the fee shall be **\$20.00 per vehicle**.
- **AOA Decals (Lost or Unaccounted)** – the fee shall be **\$75.00 for the 1<sup>st</sup> replacement** and **\$100.00 for the 2<sup>nd</sup> replacement**.
- **AOA Driver Training** – the fee shall be **\$15.00 per person**.
- **AOA Movement Area Training** – the fee shall be **\$15.00 per person**.
- **Loading Bridge Training** – the fee shall be **\$15.00 per person**.
- **AOA Driver Training, Movement Area, Loading Bridge Training Permit Replacement Fee** – the fee shall be **\$15.00 per permit**.
- **AOA Decal Late Application Fee** – the fee shall be **\$10.00 per decal** and covers expedited processing time requiring additional manpower.

### Into-Plane Fueling Recommended Fees

- **Non-commercial Aircraft Fueling** - remains at **\$0.08 per gallon** (effective 10/1/02).

### Airline VIP Clubs

- **Opportunity Fee**—the Lessee shall pay 35% of the Department’s basic VIP Club Fee, (which is currently \$27.50) as may be adjusted from time-to-time, for each non-member passenger, as defined in the VIP Club Agreement, Article 2.01 (Use of Premises) that uses its Club Facilities. Lessee’s Opportunity Fee charge, (35% of \$27.50) is \$9.63 for each non-member passenger using its club facilities.
- **Concession Fee**—the Lessee shall pay eighteen (18%) percent of the monthly Gross Revenue generated from liquor sales and ten (10%) percent of the monthly Gross Revenues generated from the sale of all other amenities granted the Lessee.

## **MISCELLANEOUS FEES AND CHARGES (continued)**

### **Letter of Determination Fee (Height Restrictions)<sup>1</sup>**

The fee shall be \$1,700.00 per each major Development Review and Letter of Determination submittal. The Aviation Department has been providing this service for the review, coordination and determination of proposed tall structures without any compensation since the Airport Zoning Ordinances were first enacted in 1969. This review includes the assurance that proposed developments comply with Miami-Dade County's airport zoning requirements. It also includes a verification of the Federal Aviation Regulations Part 77 FAA notification, review and aeronautical study determination of proposed obstruction to ensure the safety and capacity at the airport are not adversely impacted.

### **Letter of Determination Fee (Land Use Zoning Analysis)<sup>1</sup>**

The fee shall be \$700.00 per each Land Use Zoning Analysis Request. The Aviation Department has been providing a free-of-cost service for the review, coordination and determination of land use compatibility impacts as mandated by the Florida State Statutes, Chapter 333 since 1993. Upon final review and analysis, the Aviation Department issues a "Letter of Determination" to the respective requestors. This review includes the assurance that proposed developments comply with Miami-Dade County's Airport Zoning requirements. The recent reductions in staffing level combined with the continuous increases in the number of projects being submitted to MDAD for review at an average of 62 per year are affecting available staff time and resources. The implementation of the proposed new fee structure will permit the Aviation Department to continue providing this vital service that it deems a crucial function and an integral part of maintaining and preserving the safety and capacity of the County's Public-Use Airport System.

### **MDAD Technical Reviews and Written Comments<sup>1</sup>**

Fees for written comments (to include comments for conceptual development plans) were implemented to recover costs associated with the technical review of proposed land-uses and structures and the issuance of written comments where airspace/land use and land use Letter of Determination (LOD) criteria does not otherwise apply. This fee also applies to conceptual plans in which case MDAD's comments are requested.

Fees for Development Impact Committee (DIC) or Equivalent Large-Scale Zoning Hearing Application were implemented to recover costs associated with MDAD Planning Division's review and written comments for the County's Developmental Impact Committee (DIC) zoning hearing applications or any other type of large scale applications where Airspace/Land-Use and Land-Use Letter of Determination (LOD) criteria does not otherwise apply. Fee will be waived if proponent pays for LOD. If the DIC application is conceptual during the review time and when department comments are due, MDAD will charge the \$360.00 even if an Airspace/Land-Use LOD is required in the future.

Fees were implemented to recover costs associated with requests for new MDAD-issued Airspace/Land-Use or Land-Use Letter of Determination (LOD) which provide a time extension for an existing MDAD-issued LOD nearing expiration or already expired. This new LOD is only for an extension of time. All referenced data including, but not limited to, the land use, structure elevation, site plans, address or impacted property folio numbers as well as the actual approval must be identical to the data provided in the previously approved MDAD-issued LOD.

<sup>1</sup> The Miami-Dade Aviation Department (MDAD) may waive any fee provided for herein for applicants or users that are federal, state, or local governmental or military units, or other applicants or users under circumstances determined by MDAD to justify a waiver or reduction of the fee.

### **MISCELLANEOUS FEES AND CHARGES (continued)**

- Cell towers and other structures under 200 feet above mean sea level – the fee shall be **\$360.00**
- Request for written comments – the fee shall be **\$360.00**
- Request for written comments (revised plans) – the fee shall be **\$90.00**
- Development Impact Committee or Equivalent Large-Scale Zoning Hearing Application – the fee shall be **\$360.00**
- Permissible Crane (or Equipment) Height Determination – the fee shall be **\$360.00**
- Permissible Crane (or Equipment) Height Determination Extension Fee – the fee shall be **\$90.00**
- Permissible Crane (or Equipment) Height Determination Additional Coordinates – the fee shall be **\$45.00** (per set)
- Request for New Letter of Determination Due to Expiration – the fee shall be **\$360.00**

**Passenger Facility Charge (PFC)** – In accordance with 14 CFR Part 158 of the Federal Aviation Regulations, MDAD (Miami-Dade Aviation Department) has been authorized by the FAA to require any commercial air carrier operating at Miami International Airport to collect **\$4.50 per enplaned passenger** on its behalf. Such air carrier is allowed to keep \$0.11 per PFC of the amount remitted to MDAD.

### **Other Fees**

- **Auditorium Use Fee (Miami International Airport)**—the fee shall be \$700.00 per use per day for the whole auditorium. The auditorium can be rented as three separate halls; the fee shall be room #1 \$200.00, room #2 \$250.00 and room #3 \$250.00. It may also be rented incrementally in 4 hour blocks, the fee shall be room #1 \$100.00, room #2 \$125.00 and room #3 \$125.00.
- **Conference Room Use Fee (Miami International Airport – Non Terminal)** – the fee shall be \$150.00 for 4 hours to cover administration, preparation, utility and janitorial costs associated with converting vacant non-leased rooms into usable space for meetings and other specialized functions for airlines and other airport tenants.
- **Consular Lounge Annual Membership Fee** – the fee shall be \$500.00 per entity to cover costs associated with providing needed protocol services to members of the Consular Corps of Miami and other high-level dignitaries.
- **Consular Lounge Rental Fee for Non-Member Organizations** – the fee shall be \$500.00 for 1 – 4 hours of use per day and \$900.00 for 8 consecutive hours (full day) during a 24-hour period for rental of the MDAD Consular Lounge to non-member organizations (those organizations that are not part of the Consular Corps of Miami).
- **Late Revenue Reporting Fee** – the fee shall be \$50.00 per day, up to \$750.00 per violation for all companies doing business with the Miami-Dade Aviation Department that are required to submit revenue reports on a recurring basis (monthly, quarterly, annually, etc.).
- **Wheelchair Lift Fee**—the fee shall be \$15.00 per use and will be assessed to commuter airlines that require wheelchair-lifting equipment.
- **Security Violation Fee** – the fee shall be; first offense \$100.00; second offense \$250.00; third offense \$500.00. In addition, all court costs will also be applicable.
- **Permit Application Fee for providers of goods and services to airlines and airport tenants** - the fee shall be \$1,000.00 per permit application. A non-refundable application fee will be charged for each permit application for the provision of goods and services to airlines and other tenants at a County Airport. The current fee is \$1,000.00 and may be amended from time to time.

### **Other Fees (continued)**

- **Permit Extension Fee for providers of goods and services to airlines and airport tenants** – a minimum fee of \$500.00 which amount may be amended from time to time may also be assessed to cover the administrative costs associated with allowing a permit extension. Permit extensions are limited to 12 months.
- **Aircraft Demolition Fee** – the fee shall be \$2,000.00 per month, per aircraft for months 1 through 3; and \$4,000.00 per month, per aircraft beginning at month 4 and each month thereafter.
- **Baggage or Property Impound Fees** – The fee shall be \$5.00 per day, per piece for the first 15 days; \$10.00 per day, per piece for 16 to 30 days; \$20.00 per day, per piece for 31+days. The fee is established to cover retrieval and storage costs of unattended or neglected baggage or property.
- **Background Check Fee** – the fee shall be \$168.00 plus a 15% administrative fee per background check. The background check fee is administered by an outside vendor and will enable the department to pay for background checks for individuals applying for leases, business opportunities and other real property opportunities at the County's airports.
- **Animal Inspection Facility User Fees** – The following fees will apply for each animal that passes through the USDA Inspection Facility (Bldg. 815):
  - **Small Ruminants** (Sheep, goats, pigs, swine) - **\$25.00 flat fee per air waybill**
  - **Small Animals** (Dogs, cats, & other pet types) - **\$15.00 flat fee per air waybill**
  - **Livestock** (Equine, cattle, calves, ovine, caprine, porcine, Ostrich, etc.) - **\$45.00 per Head**
  - **Alpaca** - **\$25.00 per Head**
  - **Poultry** (Birds, baby chicks, turkey, etc.) - **\$25.00 flat fee per air waybill**
  - **Other** - **\$25.00 flat fee per air waybill**
- **Remittance Fee 5%** - Freight Handler will retain 5% of Inspection Fees for collecting amounts payable to Miami-Dade Aviation Department.
- **Average Electrical Consumption per kilowatt hour (kWh) Charge** – The charge shall be \$0.1065 per kilowatt hour consumed.
- **Airside Enforcement Processing Fee** – the fee shall be \$100.00 per civil violation. This fee covers costs associated with MDAD Airside Enforcement personnel that must testify at court hearings.
- **Violation Fees for Airport Concessionaires or Tenants** – The following fees may be charged by MDAD for violations of Chapter 25 of the Code of Miami-Dade County or agreements applicable to a Concessionaire or a Tenant:
  - **Violation of permitted use of a location** – The fee shall be \$100.00 per day, per location.
  - **Failure to maintain required hours of operation** – The fee shall be \$50.00 per day, per location.
  - **Failure to submit required documentation and reports** – The fee shall be \$50.00 per day, per report, up to \$750.00 per month.
  - **Unauthorized advertising** – The fee shall be \$50.00 per day, per location.
  - **Failure to maintain premises in a clean state** – The fee shall be \$50.00 per day, per location.
  - **Failure to maintain pricing at a level required by agreement, or to conduct surveys as required** – The fee shall be \$50.00 per day, per location.
  - **Installation of unapproved items in locations** – The fee shall be \$50.00 per day, per location.
  - **Violation of other terms and conditions** – The fee shall be \$75.00 per day, per location.

The foregoing fees are due and payable from a Concessionaire or Tenant determined by MDAD to be in violation of either Chapter 25 or an applicable agreement or both. Imposition of such fees is an additional remedy available to MDAD for such violations and is not intended to waive MDAD's right to terminate an agreement for such violations, in addition to imposing the foregoing fees.

## APPENDIX A TAB



**ALLOCATION OF OPERATING AND DEBT SERVICE COSTS BY COST CENTER WORKSHEET**

 Terminal Rental Rate Calculation Model  
 Miami-Dade County Aviation Department  
 Miami International Airport  
 FY 2015-16

Division-Description	Budgeted FY 2015-16	Direct Expense	G&A Expense	Transfers	International Facilities Percentage	Domestic Baggage Claim Percentage	Outbound Baggage Makeup Percentage	Screening Percentage	Terminal Rent Percentage	Total Terminal Percentage	Non-Terminal Percentage	Total	International Facilities Expense	Domestic Baggage Claim Expense	Outbound Baggage Makeup Expense	Screening Expense	Terminal Rent Expense	Total Terminal Expenses	Non-Terminal Expenses	Total Expenses
					[A]	[B]	[C]	[D]	[E]	[F=A+B+C+D+E]	[G]	[F+G]								
01-Executive	\$1,736,413		\$1,736,413		4.7%	0.4%	1.5%	2.8%	51.3%	60.7%	39.3%	100.0%	\$80,917	\$7,640	\$25,178	\$48,967	\$891,127	\$1,053,829	\$682,584	\$1,736,413
02-Legal	2,535,430		2,535,430		4.7%	0.4%	1.5%	2.8%	51.3%	60.7%	39.3%	100.0%	118,151	11,156	36,764	71,499	1,301,183	1,538,752	996,678	2,535,430
03-Administration	435,693		435,693		4.7%	0.4%	1.5%	2.8%	51.3%	60.7%	39.3%	100.0%	20,303	1,917	6,318	12,287	223,598	264,422	171,271	435,693
04-Accounting	4,240,995		4,240,995		4.7%	0.4%	1.5%	2.8%	51.3%	60.7%	39.3%	100.0%	197,630	18,660	61,494	119,596	2,176,479	2,573,860	1,667,135	4,240,995
05-Finance & Strategy	849,195		849,195		4.7%	0.4%	1.5%	2.8%	51.3%	60.7%	39.3%	100.0%	39,572	3,736	12,313	23,947	435,807	515,376	333,819	849,195
06-Human Resources	18,217,151		18,217,151		4.7%	0.4%	1.5%	2.8%	51.3%	60.7%	39.3%	100.0%	848,919	80,155	264,149	513,724	9,349,042	11,055,989	7,161,162	18,217,151
07-Real Estate Management & Development	4,218,784		4,218,784		4.7%	0.4%	1.5%	2.8%	51.3%	60.7%	39.3%	100.0%	196,595	18,563	61,172	118,970	2,165,080	2,560,380	1,658,404	4,218,784
08-Capital Finance	1,062,720		1,062,720		4.7%	0.4%	1.5%	2.8%	51.3%	60.7%	39.3%	100.0%	49,523	4,676	15,409	29,969	545,388	644,965	417,755	1,062,720
09-Police	31,391,758	31,391,758			0.0%	0.0%	0.0%	28.2%	50.5%	78.7%	21.3%	100.0%	--	--	--	8,846,303	15,861,363	24,707,666	6,684,092	31,391,758
10-Governmental Affairs	462,928		462,928		4.7%	0.4%	1.5%	2.8%	51.3%	60.7%	39.3%	100.0%	21,572	2,037	6,712	13,055	237,575	280,951	181,977	462,928
11-Fire & Rescue	24,532,338	24,532,338			0.0%	0.0%	0.0%	0.0%	20.0%	20.0%	80.0%	100.0%	--	--	--	--	4,906,453	4,906,453	19,625,885	24,532,338
12-Fine Arts & Cultural Affairs	990,296		990,296		4.7%	0.4%	1.5%	2.8%	51.3%	60.7%	39.3%	100.0%	46,148	4,357	14,359	27,926	508,220	601,011	389,285	990,296
13-Contracts Administration	1,082,668		1,082,668		4.7%	0.4%	1.5%	2.8%	51.3%	60.7%	39.3%	100.0%	50,452	4,764	15,699	30,531	555,625	657,071	425,597	1,082,668
14-Maintenance	107,801,455	107,801,455			4.9%	1.3%	4.2%	0.0%	43.7%	54.1%	45.9%	100.0%	5,314,861	1,381,181	4,544,888	--	47,107,764	58,348,693	49,452,762	107,801,455
15-Facilities	4,052,528		4,052,528		0.0%	0.0%	0.0%	0.0%	0.0%	0.0%	100.0%	100.0%	--	--	--	--	--	--	4,052,528	4,052,528
15-Facilities Design--wayfinding/landscaping	3,007,600	3,007,600			0.0%	0.0%	0.0%	0.0%	60.0%	60.0%	40.0%	100.0%	--	--	--	--	1,804,560	1,804,560	1,203,040	3,007,600
15-Facilities Construction	--	--	--		0.0%	0.0%	0.0%	0.0%	100.0%	100.0%	0.0%	100.0%	--	--	--	--	--	--	--	--
16-Public & Customer Relations	2,063,512		2,063,512		4.7%	0.4%	1.5%	2.8%	51.3%	60.7%	39.3%	100.0%	96,160	9,079	29,921	58,191	1,058,994	1,252,345	811,167	2,063,512
17-Aviation Planning, Land Use & Grants	5,575,785		5,575,785		4.7%	0.4%	1.5%	2.8%	51.3%	60.7%	39.3%	100.0%	259,832	24,533	80,849	157,237	2,861,493	3,383,944	2,191,841	5,575,785
19-Program Controls	2,467,410		2,467,410		0.0%	0.0%	0.0%	0.0%	100.0%	100.0%	0.0%	100.0%	--	--	--	--	2,467,410	2,467,410	--	2,467,410
22-Information Systems - Administration	36,345,265		36,345,265		6.6%	0.0%	0.0%	0.0%	51.8%	58.4%	41.6%	100.0%	2,397,117	--	--	--	18,813,649	21,210,766	15,134,499	36,345,265
22-Information Systems (CUTE SITA Contract Only)	0		--		0.0%	0.0%	0.0%	0.0%	20.0%	20.0%	80.0%	100.0%	--	--	--	--	--	--	--	--
22-Information Systems (AOIS, NSS, Network Expan, Other)	0		--		0.0%	0.0%	0.0%	0.0%	20.0%	20.0%	80.0%	100.0%	--	--	--	--	--	--	--	--
24-Business Retention & Development	472,857		472,857		4.7%	0.4%	1.5%	2.8%	51.3%	60.7%	39.3%	100.0%	22,035	2,081	6,856	13,335	242,670	286,977	185,880	472,857
25-Airside Operations	10,820,102	10,820,102			0.0%	0.0%	0.0%	0.0%	36.2%	36.2%	63.8%	100.0%	--	--	--	--	3,912,270	3,912,270	6,907,832	10,820,102
26-Terminal Operations	14,173,370		14,173,370		48.8%	0.0%	0.0%	0.0%	51.2%	100.0%	0.0%	100.0%	6,918,221	--	--	--	7,255,149	14,173,370	--	14,173,370
27-Landside Operations	12,036,841		12,036,841		0.0%	0.0%	0.0%	0.0%	0.0%	0.0%	100.0%	100.0%	--	--	--	--	--	--	12,036,841	12,036,841
28-Cargo Development	--	--	--		0.0%	0.0%	0.0%	0.0%	0.0%	0.0%	100.0%	100.0%	--	--	--	--	--	--	--	--
30-Non-Departmental O&M	42,050,000		42,050,000		0.0%	0.0%	0.0%	0.0%	76.0%	76.0%	24.0%	100.0%	--	--	--	--	31,949,001	31,949,001	10,100,999	42,050,000
30-Non-Departmental G&A	28,368,820		28,368,820		4.7%	0.4%	1.5%	2.8%	51.3%	60.7%	39.3%	100.0%	1,321,987	124,823	411,348	800,001	14,558,878	17,217,037	11,151,783	28,368,820
30-Non-Departmental Deposits	170,397,592		170,397,592	170,397,592	0.0%	0.0%	0.0%	0.0%	0.0%	0.0%	100.0%	100.0%	--	--	--	--	--	--	170,397,592	170,397,592
- Subordinate Debt Payment	15,314,713		15,314,713	15,314,713	0.0%	0.0%	0.0%	0.0%	50.0%	50.0%	50.0%	100.0%	--	--	--	--	7,657,356	7,657,356	7,657,356	15,314,713
30-Non-Departmental Debt Service	374,030,010	21,655,382	53,000,000	352,374,629	1.4%	0.5%	3.5%	0.0%	73.4%	78.7%	21.3%	100.0%	4,111,458	1,329,456	9,837,527	87,821	209,126,920	224,493,182	96,536,828	321,030,010
31-Management Agreements	67,536,754	67,536,754			0.0%	0.0%	0.0%	0.0%	46.1%	46.1%	53.9%	100.0%	--	--	--	--	31,164,790	31,164,790	36,371,964	67,536,754
34-Minority Affairs	899,186		899,186		4.7%	0.4%	1.5%	2.8%	51.3%	60.7%	39.3%	100.0%	41,902	3,956	13,038	25,357	461,462	545,716	353,470	899,186
38-Civil Environmental Engineering	8,015,843		8,015,843		0.0%	0.0%	0.0%	0.0%	0.0%	0.0%	100.0%	100.0%	--	--	--	--	--	--	8,015,843	8,015,843
40-Security & Safety	15,127,590		15,127,590		4.7%	0.4%	1.5%	2.8%	51.3%	60.7%	39.3%	100.0%	704,946	66,561	219,350	426,598	7,763,479	9,180,934	5,946,656	15,127,590
42-Communications	619,646		619,646		4.7%	0.4%	1.5%	2.8%	51.3%	60.7%	39.3%	100.0%	28,876	2,726	8,985	17,474	318,002	376,063	243,583	619,646
43-Aviation Business Planning	--	--	--		4.7%	0.4%	1.5%	2.8%	51.3%	60.7%	39.3%	100.0%	--	--	--	--	--	--	--	--
44-Marketing	1,746,513		1,746,513		4.7%	0.4%	1.5%	2.8%	51.3%	60.7%	39.3%	100.0%	81,388	7,685	25,324	49,252	896,310	1,059,959	686,554	1,746,513
45-North Terminal Development	0		--		4.7%	0.4%	1.5%	2.8%	51.3%	60.7%	39.3%	100.0%	--	--	--	--	--	--	--	--
33-AVIATION DEVELOPMENT FUND	0		--		0.0%	0.0%	0.0%	0.0%	0.0%	0.0%	100.0%	100.0%	--	--	--	--	--	--	--	--
47-Professional Compliance	1,309,092		1,309,092		4.7%	0.4%	1.5%	2.8%	51.3%	60.7%	39.3%	100.0%	61,004	5,760	18,982	36,916	671,826	794,488	514,604	1,309,092
48-Commercial Operations	--	--	--		4.7%	0.4%	1.5%	2.8%	51.3%	60.7%	39.3%	100.0%	--	--	--	--	--	--	--	--
53-Facilities Contract Management	--	--	--		4.7%	0.4%	1.5%	2.8%	51.3%	60.7%	39.3%	100.0%	--	--	--	--	--	--	--	--
50-Noise Abatement	793,877		793,877		0.0%	0.0%	0.0%	0.0%	0.0%	0.0%	100.0%	100.0%	--	--	--	--	--	--	793,877	793,877
51-Commodities Management	3,536,459		3,536,459		4.7%	0.4%	1.5%	2.8%	51.3%	60.7%	39.3%	100.0%	164,799	15,560	51,279	99,728	1,814,911	2,146,277	1,390,182	3,536,459
52-Protocol & International Affairs	1,068,287		1,068,287		4.7%	0.4%	1.5%	2.8%	51.3%	60.7%	39.3%	100.0%	49,782	4,700	15,490	30,126	548,245	648,343	419,944	1,068,287
55-Financial Planning & Performance Analysis	458,558		458,558		4.7%	0.4%	1.5%	2.8%	51.3%	60.7%	39.3%	100.0%	21,369	2,018	6,649	12,931	235,332	278,299	180,259	458,558
56-Operations	1,131,450		1,131,450		4.7%	0.4%	1.5%	2.8%	51.3%	60.7%	39.3%	100.0%	52,726	4,978	16,406	31,907	580,660	686,677	444,773	1,131,450
57-Facilities Development	403,410		403,410		4.7%	0.4%	1.5%	2.8%	51.3%	60.7%	39.3%	100.0%	18,799	1,775	5,849	11,376	207,030	244,830	158,580	403,410
58-Facilities Management	1,627,282		1,627,282		4.7%	0.4%	1.5%	2.8%	51.3%	60.7%	39.3%	100.0%	75,831	7,160	23,596	45,889	835,121	987,597	639,685	1,627,282
59-Security	--	--	--		4.7%	0.4%	1.5%	2.8%	51.3%	60.7%	39.3%	100.0%	--	--	--	--	--	--	--	--
60-Grants Management	--	--	--		4.7%	0.4%	1.5%	2.8%	51.3%	60.7%	39.3%	100.0%	--	--	--	--	--	--	--	--
61-Strategic Planning	--	--	--		4.7%	0.4%	1.5%	2.8%	51.3%	60.7%	39.3%	100.0%	--	--	--	--	--	--	--	--
62-Security Operations Command Center	--	--	--		4.7%	0.4%	1.5%	2.8%	51.3%	60.7%	39.3%	100.0%	--	--	--	--	--	--	--	--
63-Cash Management	1,671,858		1,671,858		4.7%	0.4%	1.5%	2.8%	51.3%	60.7%	39.3%	100.0%	77,909	7,356	24,242	47,146	857,998	1,014,651	657,207	1,671,858
64-Airport Concession & Business Development	3,079,778		3,079,778		4.7%	0.4%	1.5%	2.8%	51.3%	60.7%	39.3%	100.0%	143,518	13,551	44,657	86,850	1,580,542	1,869,117	1,210,661	3,079,778
65-Communications, Hospitality & Transportation	712,473		712,473		4.7%	0.4%	1.5%	2.8%	51.3%	60.7%	39.3%	100.0%	33,201	3,135	10,331	20,092	365,641	432,400	280,073	712,473
37-General Aviation Airports	--	--	--		0.0%	0.0%	0.0%	0.0%	0.0%	0.0%	100.0%	100.0%								



ALLOCATION OF OPERATING AND DEBT SERVICE COSTS BY COST CENTER WORKSHEET  
Terminal Rental Rate Calculation Model  
Miami-Dade County Aviation Department  
Miami International Airport  
FY 2015-16

Division-Description	Budgeted FY 2015-16	Direct Expense	G&A Expense	Transfers	International Facilities Percentage	Domestic Baggage Claim Percentage	Outbound Baggage Makeup Percentage	Screening Percentage	Terminal Rent Percentage	Total Terminal Percentage	Non-Terminal Percentage	Total	International Facilities Expense	Domestic Baggage Claim Expense	Outbound Baggage Makeup Expense	Screening Expense	Terminal Rent Expense	Total Terminal Expenses	Non-Terminal Expenses	Total Expenses
<b>ALLOCATION OF O&amp;M BY DIVISIONS</b>																				
<b>ALLOCATION OF POLICE O&amp;M</b>																				
Administration	\$576,450								78.7%	78.7%	21.3%	100.0%	--	--	--	--	\$453,709	\$453,709	\$122,741	\$576,450
Uniform Patrol	29,554,473				0.0%	0.0%	0.0%	29.9%	50.0%	79.9%	20.1%	100.0%	--	--	--	8,846,304	14,777,237	23,623,541	5,930,933	29,554,474
General Investigation Unit	1,260,835				0.0%	0.0%	0.0%	0.0%	50.0%	50.0%	50.0%	100.0%	--	--	--	--	630,418	630,418	630,418	1,260,836
<b>09-TOTAL POLICE O&amp;M</b>	<b>\$31,391,758</b>	<b>\$31,391,758</b>			<b>0.0%</b>	<b>0.0%</b>	<b>0.0%</b>	<b>28.2%</b>	<b>50.5%</b>	<b>78.7%</b>	<b>21.3%</b>	<b>100.0%</b>	<b>0</b>	<b>0</b>	<b>0</b>	<b>\$8,846,304</b>	<b>\$15,861,364</b>	<b>\$24,707,668</b>	<b>\$6,684,092</b>	<b>\$31,391,760</b>
<b>ALLOCATION OF FIRE-RESCUE O&amp;M</b>																				
Administration	\$23,515,644				0	0	0	0	20.0%	20.0%	80.0%	100.0%	--	--	--	--	\$4,703,115	\$4,703,115	\$18,812,529	\$23,515,644
Rescue	--				0.0%	0.0%	0.0%	0.0%	35.0%	35.0%	65.0%	100.0%	--	--	--	--	0	0	0	0
Inspection	--				0.0%	0.0%	0.0%	0.0%	20.0%	20.0%	80.0%	100.0%	--	--	--	--	--	--	--	0
Fire-fighters	--				0.0%	0.0%	0.0%	0.0%	20.0%	20.0%	80.0%	100.0%	--	--	--	--	0	0	0	0
Fire Technician	1,016,694				0.0%	0.0%	0.0%	0.0%	20.0%	20.0%	80.0%	100.0%	--	--	--	--	203,338	203,338	813,355	1,016,693
<b>11-TOTAL FIRE-RESCUE O&amp;M</b>	<b>\$24,532,338</b>	<b>\$24,532,338</b>			<b>0.0%</b>	<b>0.0%</b>	<b>0.0%</b>	<b>0.0%</b>	<b>20.0%</b>	<b>20.0%</b>	<b>80.0%</b>	<b>100.0%</b>	<b>0</b>	<b>0</b>	<b>0</b>	<b>0</b>	<b>\$4,906,453</b>	<b>\$4,906,453</b>	<b>\$19,625,884</b>	<b>\$24,532,337</b>
<b>ALLOCATION OF MAINTENANCE O&amp;M</b>																				
Administration	\$0				0	0	0	0	54.1%	54.1%	45.9%	100.0%	--	--	--	--	\$0	\$0	\$0	\$0
Security Infrastructure	2,762,899				0.0%	0.0%	0.0%	0.0%	0.0%	0.0%	100.0%	100.0%	--	--	--	--	--	--	2,762,899	2,762,899
Administration (Engineering Design & Commissioning)	3,854,854				0.0%	0.0%	0.0%	0.0%	0.0%	0.0%	100.0%	100.0%	--	--	--	--	--	--	3,854,854	3,854,854
Capital Compensation (Maint Construction Team)	1,243,373				0.0%	0.0%	0.0%	0.0%	0.0%	0.0%	100.0%	100.0%	--	--	--	--	--	--	1,243,373	1,243,373
Service Station	1,871,000				0.0%	0.0%	0.0%	0.0%	0.0%	0.0%	100.0%	100.0%	--	--	--	--	--	--	1,871,000	1,871,000
Plumbing	2,115,766				0.0%	0.0%	0.0%	0.0%	68.0%	68.0%	32.0%	100.0%	--	--	--	--	1,438,721	1,438,721	677,045	2,115,766
Electric	3,260,770				0.0%	0.0%	0.0%	0.0%	90.0%	90.0%	10.0%	100.0%	--	--	--	--	2,934,693	2,934,693	326,077	3,260,770
Air Conditioning	3,932,767				0.0%	0.0%	0.0%	0.0%	100.0%	100.0%	0.0%	100.0%	--	--	--	--	3,932,767	3,932,767	0	3,932,767
Paint	--				0.0%	0.0%	0.0%	0.0%	50.0%	50.0%	50.0%	100.0%	--	--	--	--	0	0	0	0
Landscape - General	3,435,871				0.0%	0.0%	0.0%	0.0%	0.0%	0.0%	100.0%	100.0%	--	--	--	--	--	--	3,435,871	3,435,871
Airfield Lighting	963,977				0.0%	0.0%	0.0%	0.0%	0.0%	0.0%	100.0%	100.0%	--	--	--	--	--	--	963,977	963,977
Public Works	1,798,294				0.0%	0.0%	0.0%	0.0%	2.0%	2.0%	98.0%	100.0%	--	--	--	--	35,966	35,966	1,762,328	1,798,294
Incinerator (Waste Management)	3,992,390				0.0%	0.0%	0.0%	0.0%	100.0%	100.0%	0.0%	100.0%	--	--	--	--	3,992,390	3,992,390	0	3,992,390
Tamiami Airport Maintenance	798,583				0.0%	0.0%	0.0%	0.0%	0.0%	0.0%	100.0%	100.0%	--	--	--	--	--	--	798,583	798,583
Opa-Locka Airport Maintenance	550,302				0.0%	0.0%	0.0%	0.0%	0.0%	0.0%	100.0%	100.0%	--	--	--	--	--	--	550,302	550,302
Relamping - Systemwide	2,101,611				0.0%	0.0%	0.0%	0.0%	0.0%	0.0%	100.0%	100.0%	--	--	--	--	--	--	2,101,611	2,101,611
Fleet Management - Heavy Auto Equipment	3,205,786				0.0%	0.0%	0.0%	0.0%	0.0%	0.0%	100.0%	100.0%	--	--	--	--	--	--	3,205,786	3,205,786
Mechanical Conveyors	110,000				20.0%	40.0%	20.0%	0.0%	20.0%	100.0%	0.0%	100.0%	22,000	44,000	22,000	--	22,000	110,000	--	110,000
Mechanical Loading Bridges	3,240,669				0.0%	0.0%	0.0%	0.0%	0.0%	0.0%	100.0%	100.0%	--	--	--	--	--	--	3,240,669	3,240,669
Mechanical General	728,952				0.0%	0.0%	0.0%	0.0%	20.0%	20.0%	80.0%	100.0%	--	--	--	--	145,790	145,790	583,162	728,952
Terminal Maintenance	1,695,028				0.0%	0.0%	0.0%	0.0%	100.0%	100.0%	0.0%	100.0%	--	--	--	--	1,695,028	1,695,028	0	1,695,028
Telecommunication	--				10.0%	5.0%	4.0%	1.0%	60.0%	80.0%	20.0%	100.0%	--	--	--	--	--	--	--	0
Striping	1,595,892				0.0%	0.0%	0.0%	0.0%	0.0%	0.0%	100.0%	100.0%	--	--	--	--	0	0	1,595,892	1,595,892
Terminal Maintenance - Shop 82	905,675				0.0%	0.0%	0.0%	0.0%	80.0%	80.0%	20.0%	100.0%	--	--	--	--	724,540	724,540	181,135	905,675
The Roof Shop 63	--				0.0%	0.0%	0.0%	0.0%	100.0%	100.0%	0.0%	100.0%	--	--	--	--	0	0	--	0

**ALLOCATION OF OPERATING AND DEBT SERVICE COSTS BY COST CENTER WORKSHEET**

Terminal Rental Rate Calculation Model  
Miami-Dade County Aviation Department  
Miami International Airport  
FY 2015-16

Division-Description	Budgeted FY 2015-16	Direct Expense	G&A Expense	Transfers	International Facilities Percentage	Domestic Baggage Claim Percentage	Outbound Baggage Makeup Percentage	Screening Percentage	Terminal Rent Percentage	Total Terminal Percentage	Non-Terminal Percentage	Total	International Facilities Expense	Domestic Baggage Claim Expense	Outbound Baggage Makeup Expense	Screening Expense	Terminal Rent Expense	Total Terminal Expenses	Non-Terminal Expenses	Total Expenses
Airport Fire Suppression Technicians	4,568,306				0.0%	0.0%	0.0%	0.0%	70.0%	70.0%	30.0%	100.0%	--	--	--	--	3,197,814	3,197,814	1,370,492	4,568,306
A/C Control	--				0.0%	0.0%	0.0%	0.0%	100.0%	100.0%	0.0%	100.0%	--	--	--	--	0	0	--	0
Generators	788,497				0.0%	0.0%	0.0%	0.0%	60.0%	60.0%	40.0%	100.0%	--	--	--	--	473,098	473,098	315,399	788,497
Maint-Bldg Management & Control	734,498				0.0%	0.0%	0.0%	0.0%	95.0%	95.0%	5.0%	100.0%	--	--	--	--	697,773	697,773	36,725	734,498
Maint-Video Shop	1,079,214				0.0%	0.0%	0.0%	0.0%	95.0%	95.0%	5.0%	100.0%	--	--	--	--	1,025,253	1,025,253	53,961	1,079,214
Maint-Locksmith Shop	450,082				0.0%	0.0%	0.0%	0.0%	85.0%	85.0%	15.0%	100.0%	--	--	--	--	382,570	382,570	67,512	450,082
Maint-Quality Assurance	806,768				0.0%	0.0%	0.0%	0.0%	100.0%	100.0%	0.0%	100.0%	--	--	--	--	806,768	806,768	--	806,768
Maint-Planning & Program Management	--				0.0%	0.0%	0.0%	0.0%	100.0%	100.0%	0.0%	100.0%	--	--	--	--	0	0	--	0
Facilities-Initiation Engineer and Maintenance	--				0.0%	0.0%	0.0%	0.0%	100.0%	100.0%	0.0%	100.0%	--	--	--	--	0	0	--	0
Maint-Safety & Customer Serv.	0				0.0%	0.0%	0.0%	0.0%	100.0%	100.0%	0.0%	100.0%	--	--	--	--	0	0	--	0
Manager - Facilities Maintenance	--				0.0%	0.0%	0.0%	0.0%	100.0%	100.0%	0.0%	100.0%	--	--	--	--	0	0	--	0
Pan Am ADF (Lift Stations)	2,030,732				0.0%	0.0%	0.0%	0.0%	0.0%	0.0%	100.0%	100.0%	--	--	--	--	--	--	2,030,732	2,030,732
ADF Maint West Cargo (Tract I)	3,829,891				0.0%	0.0%	0.0%	0.0%	0.0%	0.0%	100.0%	100.0%	--	--	--	--	--	--	3,829,891	3,829,891
Warehouse	0				0.0%	0.0%	0.0%	0.0%	60.0%	60.0%	40.0%	100.0%	--	--	--	--	0	0	--	0
Contracts & Construction	1,482,929				0.0%	0.0%	0.0%	0.0%	0.0%	0.0%	100.0%	100.0%	--	--	--	--	--	--	1,482,929	1,482,929
Terminal Maintenance - Contracts (Electrical)	213,401				0.0%	0.0%	0.0%	0.0%	0.0%	0.0%	100.0%	100.0%	--	--	--	--	--	--	213,401	213,401
Outside Contractuals	30,141,605				15.1%	4.4%	15.0%	0.0%	44.7%	79.3%	20.7%	100.0%	4,555,279	1,337,181	4,522,888	--	13,473,170	23,888,518	6,253,087	30,141,605
Maint - MIA Contract Management	7329353				0.0%	0.0%	0.0%	0.0%	50.0%	50.0%	50.0%	100.0%	--	--	--	--	3,664,677	3,664,677	3,664,677	7,329,353
Building Mgmt Control (Terminal A/C)	2,245,529				0.0%	0.0%	0.0%	0.0%	100.0%	100.0%	0.0%	100.0%	--	--	--	--	2,245,529	2,245,529	0	2,245,529
Planning & Control	--				0.0%	0.0%	0.0%	0.0%	50.0%	50.0%	50.0%	100.0%	--	--	--	--	--	--	--	0
Other Contract Services	--				0.0%	0.0%	0.0%	0.0%	50.0%	50.0%	50.0%	100.0%	--	--	--	--	--	--	--	0
Building 100	--				0.0%	0.0%	0.0%	0.0%	0.0%	0.0%	100.0%	100.0%	--	--	--	--	--	--	--	0
Landscape Projects	0				0.0%	0.0%	0.0%	0.0%	0.0%	0.0%	100.0%	100.0%	--	--	--	--	0	0	--	0
Terminal-Wide Security (CCTV F034F)	--				0.0%	0.0%	0.0%	0.0%	100.0%	100.0%	0.0%	100.0%	--	--	--	--	0	0	--	0
Outside Contractuals	--				0.0%	0.0%	0.0%	0.0%	0.0%	0.0%	0.0%	0.0%	--	--	--	--	--	--	--	0
Other Contract Services	--				0.0%	0.0%	0.0%	0.0%	50.0%	50.0%	50.0%	100.0%	--	--	--	--	--	--	--	0
APM - Airport People Mover (CC-'E' Satellite Train)	1,475,164				50.0%	0.0%	0.0%	0.0%	50.0%	100.0%	0.0%	100.0%	737,582	--	--	--	737,582	1,475,164	0	1,475,164
Special Projects	--				0.0%	0.0%	0.0%	0.0%	90.0%	90.0%	10.0%	100.0%	--	--	--	--	0	0	--	0
Facilities Maintenance	1,130,031				0.0%	0.0%	0.0%	0.0%	0.0%	0.0%	100.0%	100.0%	--	--	--	--	0	0	--	0
Technical Support	1,731,412				0.0%	0.0%	0.0%	0.0%	90.0%	90.0%	10.0%	100.0%	--	--	--	--	1,017,028	1,017,028	113,003	1,130,031
Interiors	1,933,138				0.0%	0.0%	0.0%	0.0%	90.0%	90.0%	10.0%	100.0%	--	--	--	--	1,558,271	1,558,271	173,141	1,731,412
Signage Design	1,666,446				0.0%	0.0%	0.0%	0.0%	90.0%	90.0%	10.0%	100.0%	--	--	--	--	1,739,824	1,739,824	193,314	1,933,138
14-TOTAL MAINTENANCE O&M	\$107,801,455	\$107,801,455			4.9%	1.3%	4.2%	0.0%	43.7%	54.1%	45.9%	100.0%	\$5,314,861	\$1,381,181	\$4,544,888	\$0	\$47,107,764	\$58,348,694	\$49,452,762	\$107,801,456
<b>ALLOCATION OF INFORMATION SYSTEMS</b>																				
Administration	\$18,446,951				0	0	0	0	58.4%	58.4%	41.6%	100.0%	--	--	--	--	10,765,473	10,765,473	\$7,681,478	\$18,446,951
Telephone	9,057,115				0.0%	0.0%	0.0%	0.0%	67.0%	67.0%	33.0%	100.0%	--	--	--	--	6,068,267	6,068,267	2,988,848	9,057,115
CUTE, CUSS (SITA Contract)	4,389,465				0.0%	0.0%	0.0%	0.0%	10.0%	10.0%	90.0%	100.0%	--	--	--	--	438,947	438,947	3,950,519	4,389,466
CBP Kiosks (SITA Contract)	2,397,117				100.0%	0.0%	0.0%	0.0%	0.0%	100.0%	0.0%	100.0%	2,397,117	--	--	--	--	2,397,117	0	2,397,117
AOIS, NSS and Other O/S Contracts	2,054,617				0.0%	0.0%	0.0%	0.0%	75.0%	75.0%	25.0%	100.0%	--	--	--	--	1,540,963	1,540,963	513,654	2,054,617
22-TOTAL INFORMATION SYSTEMS O&M	\$36,345,265	\$36,345,265			6.6%	0.0%	0.0%	0.0%	51.8%	58.4%	41.6%	100.0%	\$2,397,117	\$0	\$0	\$0	\$18,813,650	\$21,210,767	\$15,134,499	\$36,345,266
<b>ALLOCATION OF AIRSIDE OPS O&amp;M</b>																				
Administration	\$2,187,347				0	0	0	0	36.2%	36.2%	63.8%	100.0%	--	--	--	--	790,888	790,888	\$1,396,459	\$2,187,347
Ramp Control	3,234,988				0.0%	0.0%	0.0%	0.0%	0.0%	0.0%	100.0%	100.0%	--	--	--	--	--	--	3,234,988	3,234,988
Access Control	2,276,385				0.0%	0.0%	0.0%	0.0%	0.0%	0.0%	100.0%	100.0%	--	--	--	--	--	--	2,276,385	2,276,385
Gate Assignment	3,121,382				0.0%	0.0%	0.0%	0.0%	100.0%	100.0%	0.0%	100.0%	--	--	--	--	3,121,382	3,121,382	0	3,121,382
Noise Control	--				0.0%	0.0%	0.0%	0.0%	0.0%	0.0%	100.0%	100.0%	--	--	--	--	--	--	--	0
25-TOTAL AIRSIDE OPS O&M	\$10,820,102	\$10,820,102			0.0%	0.0%	0.0%	0.0%	36.2%	36.2%	63.8%	100.0%	\$0	\$0	\$0	\$0	\$3,912,270	\$3,912,270	\$6,907,832	\$10,820,102

ALLOCATION OF OPERATING AND DEBT SERVICE COSTS BY COST CENTER WORKSHEET

Terminal Rental Rate Calculation Model  
Miami-Dade County Aviation Department  
Miami International Airport  
FY 2015-16

Division-Description	Budgeted FY 2015-16	Direct Expense	G&A Expense	Transfers	International Facilities Percentage	Domestic Baggage Claim Percentage	Outbound Baggage Makeup Percentage	Screening Percentage	Terminal Rent Percentage	Total Terminal Percentage	Non-Terminal Percentage	Total	International Facilities Expense	Domestic Baggage Claim Expense	Outbound Baggage Makeup Expense	Screening Expense	Terminal Rent Expense	Total Terminal Expenses	Non-Terminal Expenses	Total Expenses
<b>ALLOCATION OF TERMINAL OPS O&amp;M</b>																				
Administration	\$591,878				0	0	0	0	100.0%	100.0%	0.0%	100.0%	--	--	--	--	\$591,878	\$591,878	--	\$591,878
Domestic Operations	4,214,867				0.0%	0.0%	0.0%	0.0%	100.0%	100.0%	0.0%	100.0%	--	--	--	--	4,214,867	4,214,867	--	4,214,867
International Operations	6,918,221				100.0%	0.0%	0.0%	0.0%	0.0%	100.0%	0.0%	100.0%	6,918,221	--	--	--	--	6,918,221	--	6,918,221
Tour & Charter Operations	--				0.0%	0.0%	0.0%	0.0%	100.0%	100.0%	0.0%	100.0%	--	--	--	--	--	--	--	0
Contract Services	914,528				0.0%	0.0%	0.0%	0.0%	100.0%	100.0%	0.0%	100.0%	--	--	--	--	914,528	914,528	--	914,528
Westinghouse-International Shuttle	--				66.7%	0.0%	0.0%	0.0%	33.3%	100.0%	0.0%	100.0%	--	--	--	--	--	--	--	0
Westinghouse System Improvements	--				66.7%	0.0%	0.0%	0.0%	33.3%	100.0%	0.0%	100.0%	--	--	--	--	--	--	--	0
LED Sign Maintenance	--				0.0%	100.0%	0.0%	0.0%	0.0%	100.0%	0.0%	100.0%	--	--	--	--	--	--	--	0
D-FIS Kiosks - Int'l Inbound	--				100.0%	0.0%	0.0%	0.0%	0.0%	100.0%	0.0%	100.0%	--	--	--	--	--	--	--	0
ITBF Guard Service	--				100.0%	0.0%	0.0%	0.0%	0.0%	100.0%	0.0%	100.0%	--	--	--	--	--	--	--	0
Passenger & Visitor services	1,533,876				0.0%	0.0%	0.0%	0.0%	100.0%	100.0%	0.0%	100.0%	--	--	--	--	1,533,876	1,533,876	--	1,533,876
26-TOTAL TERMINAL OPS O&M	\$14,173,370	\$14,173,370			48.8%	0.0%	0.0%	0.0%	51.2%	100.0%	0.0%	100.0%	\$6,918,221	\$0	\$0	\$0	\$7,255,149	\$14,173,370	\$0	\$14,173,370
<b>ALLOCATION OF LANDSIDE OPS O&amp;M</b>																				
Administration	\$970,343								0.0%	0.0%	100.0%	100.0%	--	--	--	--	--	--	\$970,343	\$970,343
Ramp & Garage Control	10,256,449				0.0%	0.0%	0.0%	0.0%	0.0%	0.0%	100.0%	100.0%	--	--	--	--	--	--	10,256,449	10,256,449
Towing	--				0.0%	0.0%	0.0%	0.0%	0.0%	0.0%	100.0%	100.0%	--	--	--	--	--	--	0	0
Taxi	--				0.0%	0.0%	0.0%	0.0%	0.0%	0.0%	100.0%	100.0%	--	--	--	--	--	--	0	0
Identification	--				0.0%	0.0%	0.0%	0.0%	0.0%	0.0%	100.0%	100.0%	--	--	--	--	--	--	0	0
Contract Services	--				0.0%	0.0%	0.0%	0.0%	0.0%	0.0%	100.0%	100.0%	--	--	--	--	--	--	0	0
Control Function	804,778				0.0%	0.0%	0.0%	0.0%	0.0%	0.0%	100.0%	100.0%	--	--	--	--	--	--	804,778	804,778
Employee Parking Operations	5,271				0.0%	0.0%	0.0%	0.0%	0.0%	0.0%	100.0%	100.0%	--	--	--	--	--	--	5,271	5,271
27-TOTAL LANDSIDE OPS O&M	\$12,036,841	\$12,036,841			0.0%	0.0%	0.0%	0.0%	0.0%	0.0%	100.0%	100.0%	\$0	\$0	\$0	\$0	\$0	\$0	\$12,036,841	\$12,036,841
<b>ALLOCATION OF NON-DEPT O&amp;M</b>																				
Telephone	\$500,000				0.0%	0.0%	0.0%	0.0%	67.0%	67.0%	33.0%	100.0%	--	--	--	--	\$335,000	\$335,000	\$165,000	\$500,000
Electrical Service	32,000,000				0.0%	0.0%	0.0%	0.0%	75.0%	75.0%	25.0%	100.0%	--	--	--	--	24,000,000	24,000,000	7,999,999	31,999,999
Natural Gas Service	50,000				0.0%	0.0%	0.0%	0.0%	28.0%	28.0%	72.0%	100.0%	--	--	--	--	14,000	14,000	36,000	50,000
Water & Sewer Service	9,500,000				0.0%	0.0%	0.0%	0.0%	80.0%	80.0%	20.0%	100.0%	--	--	--	--	7,600,000	7,600,000	1,900,000	9,500,000
30-TOTAL NON-DEPARTMENTAL O&M	\$42,050,000				0.0%	0.0%	0.0%	0.0%	76.0%	76.0%	24.0%	100.0%	\$0	\$0	\$0	\$0	\$31,949,000	\$31,949,000	\$10,100,999	\$42,049,999

ALLOCATION OF OPERATING AND DEBT SERVICE COSTS BY COST CENTER WORKSHEET  
Terminal Rental Rate Calculation Model  
Miami-Dade County Aviation Department  
Miami International Airport  
FY 2015-16

Division-Description	Budgeted FY 2015-16	Direct Expense	G & A Expense	Transfers	International Facilities Percentage	Domestic Baggage Claim Percentage	Outbound Baggage Makeup Percentage	Screening Percentage	Terminal Rent Percentage	Total Terminal Percentage	Non-Terminal Percentage	Total	International Facilities Expense	Domestic Baggage Claim Expense	Outbound Baggage Makeup Expense	Screening Expense	Terminal Rent Expense	Total Terminal Expenses	Non-Terminal Expenses	Total Expenses
<b>ALLOCATION OF MGMT AGREEMENTS</b>																				
Sky Caps / Porter	--				100.0%	0.0%	0.0%	0.0%	0.0%	100.0%	0.0%	100.0%	\$0	--	--	--	--	--	--	\$0
Smart Carte FIS	--				100.0%	0.0%	0.0%	0.0%	0.0%	100.0%	0.0%	100.0%	\$0	--	--	--	--	--	--	\$0
TWOV (Transit Without Visa)	--				100.0%	0.0%	0.0%	0.0%	0.0%	100.0%	0.0%	100.0%	--	--	--	--	--	--	--	0
Unico/Vista/N&K Janitorial	33,837,991				0.0%	0.0%	0.0%	0.0%	92.1%	92.1%	7.9%	100.0%	--	--	--	--	31,164,790	31,164,790	2,673,201	33,837,991
Other Management Contracts	33,698,763				0.0%	0.0%	0.0%	0.0%	0.0%	0.0%	100.0%	100.0%	--	--	--	--	--	--	33,698,763	33,698,763
<b>31-TOTAL MGMT AGREEMENTS</b>	<b>\$67,536,754</b>	<b>\$67,536,754</b>			<b>0.0%</b>	<b>0.0%</b>	<b>0.0%</b>	<b>0.0%</b>	<b>46.1%</b>	<b>46.1%</b>	<b>53.9%</b>	<b>100.0%</b>	<b>\$0</b>	<b>\$0</b>	<b>\$0</b>	<b>\$0</b>	<b>\$31,164,790</b>	<b>\$31,164,790</b>	<b>\$36,371,964</b>	<b>\$67,536,754</b>
<b>ALLOCATION OF G/A AIRPORT O&amp;M</b>	<b>\$3,338,211</b>	<b>\$3,338,211</b>											<b>\$0</b>	<b>\$0</b>	<b>\$0</b>	<b>\$0</b>	<b>\$0</b>	<b>\$0</b>	<b>\$3,338,211</b>	<b>\$3,338,211</b>
<b>TOTAL DIRECT O&amp;M</b>	<b>\$350,026,094</b>												<b>\$14,630,199</b>	<b>\$1,381,181</b>	<b>\$4,544,888</b>	<b>\$8,846,304</b>	<b>\$160,970,440</b>	<b>\$190,373,012</b>	<b>\$159,653,084</b>	<b>\$350,026,096</b>
<b>ALLOCATION OF MAINT. O&amp;M BY SUBDIVISIONS</b>																				
<b>ALLOCATION OF CONTRACT SERVICES</b>																				
Outside Maintenance-Motor Vehicles	--				0.0%	0.0%	0.0%	0.0%	0.0%	0.0%	100.0%	100.0%	--	--	--	--	--	--	--	\$0
Pest Control	--				0.0%	0.0%	0.0%	0.0%	100.0%	100.0%	0.0%	100.0%	--	--	--	--	--	--	--	0
Other Outside Maintenance	--				0.0%	0.0%	0.0%	0.0%	0.0%	0.0%	100.0%	100.0%	--	--	--	--	--	--	--	0
Employee Shuttle	--				0.0%	0.0%	0.0%	0.0%	0.0%	0.0%	100.0%	100.0%	--	--	--	--	--	--	--	0
Laboratory Services	--				0.0%	0.0%	0.0%	0.0%	100.0%	100.0%	0.0%	100.0%	--	--	--	--	--	--	--	0
Water Treatment Service	--				0.0%	0.0%	0.0%	0.0%	100.0%	100.0%	0.0%	100.0%	--	--	--	--	--	--	--	0
Duinker-Chrysler monthly	--				66.7%	0.0%	0.0%	0.0%	33.3%	100.0%	0.0%	100.0%	--	--	--	--	--	--	--	0
Automated People Mover (NTD Train)	7,415,760				25.0%	0.0%	0.0%	0.0%	75.0%	100.0%	0.0%	100.0%	1,853,940	--	--	--	5,561,820	7,415,760	--	7,415,760
MIA Mover (RCF Train)	4,444,551				0.0%	0.0%	0.0%	0.0%	0.0%	0.0%	100.0%	100.0%	--	--	--	--	--	--	4,444,551	4,444,551
JBT & Oxford Combined BHS Contract	8,300,000				32.0%	15.0%	53.0%	0.0%	0.0%	100.0%	0.0%	100.0%	2,656,000	1,245,000	4,399,000	--	--	8,300,000	--	8,300,000
Reimbursements for Outside Contracts - L Services	--				0.0%	0.0%	0.0%	0.0%	100.0%	100.0%	0.0%	100.0%	--	--	--	--	--	--	--	0
Outside Maintenance-ASI O/B baggage	157,744				0.0%	50.0%	50.0%	0.0%	0.0%	100.0%	0.0%	100.0%	--	78,872	78,872	--	--	157,744	--	157,744
Outside Maintenance-Terminal Elevator (Schindler)	1,695,266				0.0%	0.0%	0.0%	0.0%	90.0%	90.0%	10.0%	100.0%	--	--	--	--	1,525,739	1,525,739	169,527	1,695,266
Outside Maintenance-Terminal Elevator (Otis)	549,931				0.0%	0.0%	0.0%	0.0%	3.0%	3.0%	97.0%	100.0%	--	--	--	--	16,498	16,498	533,433	549,931
Outside Maintenance-Terminal Elevator (Thyssen)	927,756				0.0%	0.0%	0.0%	0.0%	30.0%	30.0%	70.0%	100.0%	--	--	--	--	278,327	278,327	649,429	927,756
Outside Maintenance-Terminal Elevator (Kone)	3,936,197				0.0%	0.0%	0.0%	0.0%	95.0%	95.0%	5.0%	100.0%	--	--	--	--	3,739,387	3,739,387	196,810	3,936,197
Outside Maintenance-Bldg 100 Elevator (Mowrey)	80,400				0.0%	0.0%	0.0%	0.0%	0.0%	0.0%	100.0%	100.0%	--	--	--	--	--	--	80,400	80,400
Building Maintenance	--				0.0%	0.0%	0.0%	0.0%	50.0%	50.0%	50.0%	100.0%	--	--	--	--	--	--	--	0
Painting	--				0.0%	0.0%	0.0%	0.0%	50.0%	50.0%	50.0%	100.0%	--	--	--	--	--	--	--	0
Baggage (other outside contractual)	--				0.0%	100.0%	0.0%	0.0%	0.0%	100.0%	0.0%	100.0%	--	--	--	--	--	--	--	0
Plumbing	--				0.0%	0.0%	0.0%	0.0%	50.0%	50.0%	50.0%	100.0%	--	--	--	--	--	--	--	0
Electrical	0				0.0%	0.0%	0.0%	0.0%	50.0%	50.0%	50.0%	100.0%	--	--	--	--	--	--	--	0
Air Conditioning	--				0.0%	0.0%	0.0%	0.0%	45.0%	45.0%	55.0%	100.0%	--	--	--	--	--	--	--	0
Contract Asst. - Canal	--				0.0%	0.0%	0.0%	0.0%	0.0%	0.0%	100.0%	100.0%	--	--	--	--	--	--	--	0
Building Exterior	--				0.0%	0.0%	0.0%	0.0%	60.0%	60.0%	40.0%	100.0%	--	--	--	--	--	--	--	0
Doors - Automatic	2,334,000				0.0%	0.0%	0.0%	0.0%	95.0%	95.0%	5.0%	100.0%	--	--	--	--	2,217,300	2,217,300	116,700	2,334,000
Electrical	0				0.0%	0.0%	0.0%	0.0%	0.0%	0.0%	100.0%	100.0%	--	--	--	--	--	--	--	0
Cont Asst Non-Assum - Landscaping	--				0.0%	0.0%	0.0%	0.0%	0.0%	0.0%	100.0%	100.0%	--	--	--	--	--	--	--	0
Gen Bldg Repr & Renov	--				0.0%	0.0%	0.0%	0.0%	50.0%	50.0%	50.0%	100.0%	--	--	--	--	--	--	--	0
DBED Compliance Fee (GSA MOU Elevator Svc)	300,000				0.0%	0.0%	0.0%	0.0%	77.0%	77.0%	23.0%	100.0%	--	--	--	--	231,000	231,000	69,000	300,000
<b>TOTAL CONTRACT SERVICES</b>	<b>\$29,841,605</b>				<b>15.1%</b>	<b>4.4%</b>	<b>15.0%</b>	<b>0.0%</b>	<b>44.7%</b>	<b>79.3%</b>	<b>20.7%</b>	<b>100.0%</b>	<b>\$4,509,940</b>	<b>\$1,323,872</b>	<b>\$4,477,872</b>	<b>\$0</b>	<b>\$13,339,071</b>	<b>\$23,650,755</b>	<b>\$6,190,850</b>	<b>\$29,841,605</b>

ALLOCATION OF OPERATING AND DEBT SERVICE COSTS BY COST CENTER WORKSHEET  
Terminal Rental Rate Calculation Model  
Miami-Dade County Aviation Department  
Miami International Airport  
FY 2015-16

Division-Description	Budgeted FY 2015-16	Direct Expense	G&A Expense	Transfers	International Facilities Percentage	Domestic Baggage Claim Percentage	Outbound Baggage Makeup Percentage	Screening Percentage	Terminal Rent Percentage	Total Terminal Percentage	Non-Terminal Percentage	Total	International Facilities Expense	Domestic Baggage Claim Expense	Outbound Baggage Makeup Expense	Screening Expense	Terminal Rent Expense	Total Terminal Expenses	Non-Terminal Expenses	Total Expenses
<b>ALLOCATION OF PLANNING &amp; CONTROL</b>																				
Energy Management System	--				0.0%	0.0%	0.0%	0.0%	95.0%	95.0%	5.0%	100.0%	--	--	--	--	--	--	--	--
Computer Software Support	--				0.0%	0.0%	0.0%	0.0%	0.0%	0.0%	100.0%	100.0%	--	--	--	--	--	--	--	--
Planning & Control	--				0.0%	0.0%	0.0%	0.0%	100.0%	100.0%	0.0%	100.0%	--	--	--	--	--	--	--	--
<b>TOTAL PLANNING &amp; CONTROL</b>	<b>\$0</b>				<b>\$0</b>	<b>\$0</b>	<b>\$0</b>	<b>\$0</b>	<b>\$0</b>	<b>\$0</b>	<b>\$0</b>	<b>\$0</b>	<b>\$0</b>	<b>\$0</b>	<b>\$0</b>	<b>\$0</b>	<b>\$0</b>	<b>\$0</b>	<b>\$0</b>	<b>\$0</b>
<b>ALLOCATION OF LANDSCAPE PROJECTS</b>																				
Computer Software	--				0.0%	0.0%	0.0%	0.0%	0.0%	0.0%	0.0%	0.0%	--	--	--	--	--	--	--	--
Plants & Grounds	--				0.0%	0.0%	0.0%	0.0%	0.0%	0.0%	100.0%	100.0%	--	--	--	--	--	--	--	--
Other Outside Contractuals	--				0.0%	0.0%	0.0%	0.0%	0.0%	0.0%	0.0%	0.0%	--	--	--	--	--	--	--	--
Landscape	--				0.0%	0.0%	0.0%	0.0%	0.0%	0.0%	100.0%	100.0%	--	--	--	--	--	--	--	--
Landscaping	--				0.0%	0.0%	0.0%	0.0%	0.0%	0.0%	100.0%	100.0%	--	--	--	--	--	--	--	--
Irrigation	--				0.0%	0.0%	0.0%	0.0%	2.0%	2.0%	98.0%	100.0%	--	--	--	--	--	--	--	--
<b>TOTAL LANDSCAPE PROJECTS</b>	<b>\$0</b>				<b>\$0</b>	<b>\$0</b>	<b>\$0</b>	<b>\$0</b>	<b>\$0</b>	<b>\$0</b>	<b>\$0</b>	<b>\$0</b>	<b>\$0</b>	<b>\$0</b>	<b>\$0</b>	<b>\$0</b>	<b>\$0</b>	<b>\$0</b>	<b>\$0</b>	<b>\$0</b>

	Direct Current Expenses	Direct Current Expense Allocation %
<b>G&amp;A ALLOCATION BASIS</b>		
International Concourse	\$14,630,199	4.7%
Domestic Baggage Claim	1,381,181	0.4%
Outbound Baggage Makeup	4,544,888	1.5%
Screening	8,846,304	2.8%
Terminal Rent	160,970,440	51.3%
<b>Total Terminal</b>	<b>\$190,373,012</b>	<b>60.7%</b>
Non-Terminal	159,653,084	
Less Other Management Contracts	(36,371,964)	
<b>Net Non-Terminal</b>	<b>\$123,281,120</b>	<b>39.3%</b>
<b>G&amp;A Allocation Basis</b>	<b>\$313,654,132</b>	<b>100.0%</b>

<b>MANAGEMENT AGREEMENTS DETAIL</b>	
HOTEL	\$9,154,051
AIRPORT PARKING	9,422,600
BAGGAGE STORAGE	--
SIRGANY CENTURY	--
IAMI - CLUBS	865,827
MIAF	0
TOP OF THE PORT	0
SIRGANY INTL	--
ALLIED AVIATION FUELING	5,635,908
MIDFIELD FUELING	1,944,449
SHUTTLE	6,675,928
<b>SUBTOTAL</b>	<b>\$33,698,763</b>
JANITORIAL N&K, UNICCO, VISTA	33,837,991
SMARTER CARTE FIS	0
QASI-BAGGAGE STORAGE	0
<b>TOTAL</b>	<b>\$67,536,754</b>

## APPENDIX B TAB

**CUTE / CUSS**  
**Exhibit Reference**  
**FY 2015-16**

*Appendix B*

<b><i>Exhibit Name</i></b>	<b><i>Exhibit #</i></b>
<b>Maintenance Costs</b>	<b>1</b>
<ul style="list-style-type: none"><li>• Maintenance Cost Allocation</li><li>• Training Cost Allocation</li><li>• Telecom Charges</li></ul>	
<b>General Statistics</b>	<b>2</b>
<ul style="list-style-type: none"><li>• Ticket Counter Hours</li><li>• Terminal Costs per Sq. Ft. (Class I, III &amp; IV)</li><li>• Terminal Sq. Ft. (Class I, III &amp; IV)</li></ul>	
<b>Equipment Inventory by Location</b>	<b>3</b>
<b>CUSS (Common Use Self Service) Rates</b>	<b>4</b>
<b>CUTE Back-wall Display Rates</b>	<b>5</b>

**Exhibit 1**  
**FY 2016 CUTE Maintenance Expense Allocation**

<b>Equipment Costs</b>	<b>FY 2016 Budget</b>
Core Room Hardware/Servers	\$0

<b>Maintenance costs</b>		
<u>Contractors Expense</u>		
	<b>FY 2016 Budget</b>	<b>Monthly Expense</b>
SITA (Year 2 of 7)	\$4,389,465	\$365,789
AirIT (Displays Only)--2 components		
Warranty/Replacement	\$100,000	\$8,333
O & M	175,000	14,583
<b>Total</b>	<b>\$275,000</b>	<b>\$22,917</b>
Telecom Charges per port	\$144	

**Allocation of Maintenance Expenses**

<b>SITA Contract</b>			
	<b>%</b>	<b>O&amp;M Units</b>	<b>O&amp;M Expense</b>
Infrastructure	10.0%		\$438,946
Other	90.0%		
Gates	21.5%	612	942,212
Ticket Counters (includes BMU & rechk units)	63.5%	1,810	2,786,609
VIP lounges (including Club America)	0.7%	20	30,791
Training	2.5%	72	178,769
Back Office (includes Operations)	1.1%	31	47,726
CUSS	0.7%	21	32,331
<b>Total</b>	<b>90.0%</b>	<b>2,566</b>	<b>\$4,457,385</b>

<b>Training Cost Allocation</b>			
	<b>O&amp;M Units</b>	<b>% Alloc.</b>	<b>Cost Alloc.</b>
Gates	612	25.1%	\$44,802
Tkt. Ctrs.	1,810	74.1%	132,502
VIP lounges	20	0.8%	1,464
	<b>2,442</b>	<b>100.0%</b>	<b>\$178,769</b>

<b>AirIT Contract</b>	<b>Unit Value</b>	<b>%</b>	<b>O&amp;M Units</b>	<b>O&amp;M Expense</b>
<i>(Allocated to Common Use Displays only)</i>				
LCD Backwall Display Monitor	\$1,976	52.5%	441	\$144,314
LED Dynamic Signage	1,405	37.3%	441	102,671
Video Display Extenders	150	4.0%	441	10,958
Digital Video Controller	234	6.2%	441	17,058
Subtotal	\$3,764	100.0%		\$275,001
Less: LED Dyn. Sign.*				(102,671)
<b>Total</b>				<b>\$172,330</b>

\* Costs recovered through Terminal cost center charges, not CUTE.

<b>Telecom Charges</b>			
<b>Number of Required Ports</b>	<b># of Ports</b>	<b># of Locations</b>	<b>Charge per Location</b>
Gates	1.0	213	\$30,672
Ticket Counters	1.0	407	58,608
Recheck Counters	1.0	34	4,896
CUSS Kiosks	1.0	21	3,024
<b>Total</b>		<b>675</b>	<b>\$97,200</b>



**Exhibit 2  
FY 2016 CUTE General Statistics**

<b>Ticket Counter (TC) Hour Calculation</b>			
			<b>FY 2016</b>
# of TC hours per day per unit	[a]		4,095
# of TC positions w/-BMU	[b]		407
# of TC positions w/o BMU	[c]		373
# of days per year	[d]		360
Ticket Counter Hours w/ BMU	[=a*b*d]		600,000
Ticket Counter Hours w/o BMU	[=a*c*d]		550,000

<b>Terminal Cost per Square Foot (from ldg fee model)</b>		
	<b>FY2015</b>	<b>FY 2016</b>
Class I	\$83.05	\$84.90
Class III (for Training Room costs)	\$83.05	\$84.90
Class IV	\$41.53	\$42.45

<b>Class I CUTE Terminal Space Wksht</b>		
	<b>FY2015</b>	<b>FY 2016</b>
Total Class I Space (from ldg fee model)	46,596	46,041
Less Exempt Carrier space:		
LAN-TAM ticket counter space (est. 32 pos.)	(1,920)	(1,920)
AA ticket counter space**	(9,504)	(10,177)
CAL ticket counter space**	(444)	(444)
LU ticket counter space**	(53)	(53)
DL ticket counter space**	(1,547)	(1,547)
	<b>33,128</b>	<b>31,900</b>

\*\* Reflects Class I ticket counter space noted on carriers's monthly invoice for th line item expense.

<b>Class III CUTE Terminal Space Wksht</b>		
	<b>FY2015</b>	<b>FY 2016</b>
MDAD CUTE Training Room Sq Ft	800	800

**Class IV CUTE Terminal Space Wksht**

<u>Central/North Terminal</u>	<u>Carrousel</u>	<u>Square Ft</u>
	41	3,845
	42	5,270
Carrousel #42	(42)	(5,270)
	43	5,931
	45	5,049
	46	5,687
	47	4,005
	Interline	21,644
	50	2,795
	51	3,663
	52	4,686
	54	2,224
	62	6,326

**Central/North Terminal - Subtotal** **65,855**

**South Terminal**

South Terminal - Sort Piers	46,791
South Terminal - BMU (CC-J, 1st Fl)	6,662
Delta Airlnes - Sort Piers	0
<b>South Terminal - Subtotal</b>	<b>53,453</b>
Delta Airlnes - Sort Piers	(5,011)
Delta Airlnes - Sort Piers (eff 3/1/11)	0

**South Terminal - Total** **48,442**

**Total Class 4 BMU sq ft** **114,297**

Source: MDAD Technical Support Division

**Exhibit 3**  
**Total Inventory**  
**CUTE - FY 2016 Projected Budget and Rates**

Location	Equipment Location/Quantity										CUTE Back Office (Includes Operations)	Total CUTE Equipment	CUSS Units
	Ticket Counter	Recheck	Gates	BMU (Includes Curbside)	Club America	VIP Lounge	Int'l Baggage	Ticket Counters and Gates Total	Infra-structure Training	Common Use CUTE Total			
<b>Equipment Device</b>													
CPU	407	34	213	22	--	7	1	684	18	702	14	716	21
Standard Keyboard	407	34	213	22	--	7	1	684	18	702	14	716	--
Industrial Keyboard	--	--	--	--	--	--	--	--	--	--	--	--	--
Monitor	407	34	213	22	--	7	1	684	18	702	14	716	--
Boarding Pass Printer - ATB	406	27	81	8	--	6	--	528	18	546	2	548	--
Bag Tag Printer - BTP	406	27	--	8	--	--	--	441	16	457	1	458	--
Boarding Gate Reader - BGR	--	--	105	--	--	--	--	105	2	107	--	107	--
Document Scanner - MSR	--	--	--	--	--	--	--	--	--	--	--	--	--
Document Printer - DCP	33	9	70	14	--	4	1	131	9	140	10	150	--
<b>TOTAL</b>	<b>2,066</b>	<b>165</b>	<b>895</b>	<b>96</b>	<b>--</b>	<b>31</b>	<b>4</b>	<b>3,257</b>	<b>99</b>	<b>3,356</b>	<b>55</b>	<b>3,411</b>	<b>21</b>

# of O&M Units														Total
CPU	407	34	213	22	--	7	1	684	18	702	14	716	21	737
Standard Keyboard	--	--	--	--	--	--	--	--	--	--	--	--	--	--
Industrial Keyboard	--	--	--	--	--	--	--	--	--	--	--	--	--	--
Monitor	407	34	213	22	--	7	1	684	18	702	14	716	--	716
Boarding Pass Printer - ATB	406	27	81	8	--	6	--	528	18	546	2	548	--	548
Bag Tag Printer - BTP	406	27	--	8	--	--	--	441	16	457	1	458	--	458
Boarding Gate Reader - BGR	--	--	105	--	--	--	--	105	2	107	--	107	--	107
Document Scanner - MSR	--	--	--	--	--	--	--	--	--	--	--	--	--	--
Document Printer - DCP	--	--	--	--	--	--	--	--	--	--	--	--	--	--
<b>TOTAL</b>	<b>1,626</b>	<b>122</b>	<b>612</b>	<b>60</b>	<b>--</b>	<b>20</b>	<b>2</b>	<b>2,442</b>	<b>72</b>	<b>2,514</b>	<b>31</b>	<b>2,545</b>	<b>21</b>	<b>2,566</b>

Note: O&M units are a subset of total inventory; they reflect the items maintained by the service contractor as part of its contract with MDAD.

1. Sources:

- Ticket Counters and Rechecks - Resource Manager MDAD Properties Inventory
- Gates, BMU, Club America, VIP, Int'l Baggage, Training - MDAD/SITA list
- Backoffice - MDAD IT Department

**Exhibit 4**  
**COMMON USE SELF SERVICE (CUSS)**  
**FY 2016 RATES**  
**CUSS Rates Effective Oct. 1, 2015**

Pricing Category		Total Cost	# of Units	Per Unit Expense	Annual Amortization Cost (1)	Annual Per Unit	Monthly Per Unit
						[a]	[a] ÷ 12
<b>Capital Costs--CUSS UNIT (Hardware/Software)</b>							
In Ticket Counter	[b]	\$0	36	\$0.00	\$0.00	\$0.00	\$0.00
Stand Alone	[c]	\$0	26	\$0.00	\$0.00	\$0.00	\$0.00
<b>Class I Terminal Rental Costs - Stand Alone (2)</b>	[d]			\$509.40	n/a	\$509.40	\$42.45
<b>Current Expense Allocation (O&amp;M Costs) (3)</b>	[e]	\$32,331	62	\$521.46	n/a	\$521.46	\$43.46
<b>Telecom Port Charge</b>						\$144.00	\$12.00
<b>TOTAL COSTS - In Ticket Counter</b>	[b+e]					\$521.46	\$55.46
<b>TOTAL COSTS - Stand Alone</b>	[c+d+e]					\$1,030.86	\$97.91

n/a = not applicable

(1) Amortization charge based upon useful life of 3 yrs @ 6%.

(2) Applies to Stand Alone units only. Each Stand Alone unit includes 6 square feet of Class I space multiplied by the current Class I terminal rental rate.  
For FY2015 Class I terminal rental rate per square foot = **\$84.90**

(3) Current Expense amount is based on CUSS's allocation of the annual contract with SITA.

Exhibit 5  
CUTE Backwall Display Charges  
FY 2016

**Backwall Maximum Charge Calculation**

Backwall Display O&M costs	\$172,330
Ticket Counter Hours	600,000
Backwall Hourly Rate	<u>\$0.29</u>
Hours per Day	12
Days per Month	30
Positions per Display	2
Monthly Max. Backwall Charge - (CUTE Position)	<b>\$50.00</b>
Annual Backwall Charge per <u>Position</u> (Monthly Max. x 12 mo.)	<b>\$600.00</b>
Annual Backwall Charge per <u>Display</u> (Monthly Max. x 2 x 12 mo.)	<b>\$1,200.00</b>

## APPENDIX C

MIAMI INTERNATIONAL AIRPORT - TRAFFIC REPORT

TWELVE MONTHS ENDED: SEPTEMBER 30, 2015

INTERNATIONAL *	DEPLANED	ENPLANED	TOTAL	% CHG OVR	
				LAST YEAR	LAST YEAR
PASSENGERS	10,737,374	10,177,689	20,915,063	20,115,933	3.97
FREIGHT-TONS	1,069,370	847,077	1,916,447	1,900,428	0.84
MAIL-TONS	3,249	10,142	13,391	14,172	-5.51
TOTAL CARGO-TONS	1,072,619	857,219	1,929,838	1,914,599	0.80
COMMERCIAL AIRCRAFT MVMT	100,620	90,667	191,287	189,294	1.05
LANDED WEIGHT (1,000 LBS)			22,835,492	22,157,206	3.06
ARRIVING PASSENGERS & CREW REQUIRING FEDERAL INSP.			10,751,329	10,340,865	3.97
SEATS	13,674,875	12,924,715	26,599,590	25,866,076	2.84

DOMESTIC **	DEPLANED	ENPLANED	TOTAL	% CHG OVR	
				LAST YEAR	LAST YEAR
PASSENGERS	11,234,660	11,197,406	22,432,066	20,729,031	8.22
FREIGHT-TONS	150,927	103,451	254,378	255,032	-0.26
MAIL-TONS	11,568	10,523	22,091	17,842	23.81
TOTAL CARGO-TONS	162,495	113,974	276,468	272,874	1.32
COMMERCIAL AIRCRAFT MVMT	102,455	112,154	214,609	207,967	3.19
LANDED WEIGHT (1,000 LBS)			13,886,215	13,141,290	5.67
SEATS	12,277,264	13,033,543	25,310,807	24,098,222	5.03

COMBINED TOTALS	DEPLANED	ENPLANED	TOTAL	% CHG OVR	
				LAST YEAR	LAST YEAR
PASSENGERS	21,972,034	21,375,095	43,347,129	40,844,964	6.13
FREIGHT-TONS	1,220,297	950,527	2,170,825	2,155,460	0.71
MAIL-TONS	14,817	20,665	35,482	32,014	10.83
TOTAL CARGO-TONS	1,235,114	971,192	2,206,306	2,187,474	0.86
COMMERCIAL AIRCRAFT MVMT	203,075	202,821	405,896	397,261	2.17
LANDED WEIGHT (1,000 LBS)			36,721,707	35,298,496	4.03
SEATS	25,952,139	25,958,258	51,910,397	49,964,298	3.89

AIRCRAFT OPERATIONS			% CHG OVR		
LANDINGS PLUS TAKEOFFS FAA TOWER DATA			TOTAL	LAST YEAR	LAST YEAR
AIR CARRIER			349,822	312,600	11.91
AIR TAXI			39,999	69,009	-42.04
GENERAL AVIATION			18,105	18,294	-1.03
MILITARY			1,193	919	29.82
TOTAL			409,119	400,822	2.07

FREIGHT = FREIGHT PLUS EXPRESS. TOTAL CARGO = FREIGHT PLUS MAIL

\*TO AND FROM POINTS OUTSIDE U.S. JURISDICTION

\*\*TO AND FROM POINTS WITHIN U.S. JURISDICTION

\*\*\*THIS NUMBER DOES NOT INCLUDE CREW TOTALS FOR MARCH 09 THRU SEPTEMBER 09

MIAMI-DADE AVIATION DEPARTMENT: P.O.BOX 526624, MIAMI, FL. 33152

Finance & Strategy Group:

Financial Planning &  
Performance Analysis  
Division

P.O. Box 526624  
Miami, FL 33152-6624  
[www.miami-airport.com](http://www.miami-airport.com)

