



# Miami-Dade Aviation Department

## Rates, Fees & Charges

Fiscal Year  
2017-18

Finance & Strategy  
Group:

Financial Planning  
& Performance  
Analysis Division



**MIAMI-DADE AVIATION DEPARTMENT  
RATES, FEES AND CHARGES FOR FISCAL YEAR 2018  
TABLE OF CONTENTS**

**1. SUMMARY**

Summary of Airline Charges.....	1
Airline Cost per Enplaned Passenger .....	2
Airline Rates and Charges Methodology .....	3
Residual Landing Fee .....	3
Terminal Rentals.....	4
Terminal User Fees .....	5

**2. AIRSIDE**

Landing Fee Calculation .....	6
Aircraft Parking Fees .....	7
Derelict or Non-Operating Aircraft.....	8
New Fees for Charter Airlines .....	8
VIP Ramp Escort .....	8
Handling by FBO .....	9
Handling by Authorized Ground Handler.....	9
Handling by Maintenance Repair Overhaul (MRO) Entity .....	9
Ground Support Charges.....	10
Pre-Conditioned Air Fee .....	10
MDAD Loading Bridge Fee .....	10
MDAD VDGS (Visual Docking Guidance System) Loading Bridge Fee .....	10
MDAD Stair Truck Usage Fee.....	10
Aircraft Escort Fee.....	10
Delivery Vehicles or Non-Passenger Vehicle Escort Fee .....	10
Vehicle Escort for VIP Pickup at General Aviation Aircraft.....	10
Fuel Stop Fees.....	10
General Aviation Center (GAC) Facility Fee .....	10
Activity Fees by Aircraft Type.....	10a-e

**3. TERMINAL**

Airline Activity Based Fees .....	11
Concourse Use Fee .....	11
Baggage Claim Fee .....	11
Screening Use Fee.....	11
International Facilities Use Fee.....	12
Terminal Rental Rates.....	12
Average (Class III) Terminal Rental Rates .....	12
Weighted Rental Rates.....	12
CUTE Rates (Common Use Terminal Equipment) .....	13
CUTE Gate Rates.....	13
Ticket Counter Usage Fee.....	13
CUTE Dynamic Signage (Back-wall Display) .....	13
CUTE Back-office / Operations / Educational Equipment .....	13
Manual CUTE Ticket Counter Rates .....	13
Miscellaneous CUTE Charges .....	14
CUTE Charge Based on Departing Seat .....	14
CUSS Charges (Common Use Self-Service) .....	14
CCTV Charges (Closed-Circuit Television).....	14
CUTE Rate Summary and Prior Year Comparison .....	15

**TABLE OF CONTENTS (continued)**

**4. LANDSIDE**

Public and Employee Parking ..... 16

    Public Parking ..... 16

        Standard Rates ..... 16

        Valet Parking ..... 16

        Parking Space Reservation ..... 16

    Employee Parking ..... 17

        Employee Parking Decals ..... 17

        Motorcycle Parking Decals ..... 17

        Long-Term Parking Magnetic Cards ..... 17

    Contractor Parking ..... 17

    Towed Vehicles ..... 17

Ground Transportation Fees ..... 18

    Mobile Food Truck Vendor Fee ..... 19

    Taxicab Operation Fee ..... 19

    Ground Transportation Annual Permit Renewal Fee ..... 19

    Ground Transportation Permit Late Renewal Fee ..... 19

Authority to Revise or Adjust Building Rental Rates ..... 19

Land Rental and Apron Paving Rates ..... 20

Building Rental Rates (Miami International Airport) ..... 21

Antenna Installation ..... 26

Land Zone Map (Zones 1 – 4, 7) ..... 28

**5. FUEL FARM**

Fuel Flowage Fees and Calculation Explanation ..... 29

**6. GENERAL AVIATION**

General Aviation Airport Fees and Charges ..... 30

    Operational Closure Fee ..... 30

    Aerial Advertising Fee ..... 30

    Aircraft Parking at General Aviation Airports ..... 30

    Conference Room Rental Fee (Miami Executive and Opa-Locka Airports) ..... 30

    Off-Road Vehicle Parking Fee at Training & Transition Airport ..... 30

    Fuel Flowage Fee at General Aviation Airports ..... 30

    Training & Transition Approach Fee ..... 30

    AOA (Aircraft Operating Area) Decal for Commercial Vehicles and Equipment ..... 30

    AOA Decal for Privately Owned Vehicles and Equipment ..... 30

    AOA Decal Replacement Fee for Vehicles and Equipment ..... 30

    AOA Decal Late Application Fee ..... 30, 37

    Building Rental Rates (Opa-Locka Executive Airport - OPL) ..... 31

    Building Rental Rates (Miami Executive Airport - TMB) ..... 32

    Building Rental Rates (Homestead General Aviation Airport – X51) ..... 33

**TABLE OF CONTENTS (continued)**

**7. TELECOMMUNICATIONS**

Telecommunication Fees ..... 34

    Wireless Service Providers ..... 34

    Cable Television (CATV) Recovery Fee ..... 34

    Coaxial Cable Recovery Fees ..... 34

    Wireless Data Port with Internet Access Fee ..... 34

    Wireless Network Access Fee for Multiple Users and Proprietary Tenants ..... 34

    Offsite FIDS Rate..... 34

        Network Port Costs..... 34

        Equipment Rental Costs ..... 34

STS (Shared Tenant Services) Fees ..... 35

**8. MISCELLANEOUS**

Miscellaneous Fees and Charges ..... 36

    Opportunity Fee for Third Party Vendors ..... 36

    Penalty Fee for Employing Unpermitted Service Vendors ..... 36

    Miscellaneous Air Carrier Fees..... 36

        Disruptive Passenger Fee..... 36

        Ground Service Equipment (GSE) Impound Fee ..... 36

        Aircraft Handling Chock Fee..... 36

    Employee (MDAD Tenant) ID Badge Fees ..... 37

        Employee Identification Badge Fee..... 37

        Lost or Unaccounted Employee ID Badge Fee ..... 37

        Failure to Notify and Return Terminated Employee ID Badge Fee ..... 37

        TSA 5% Rule Violation Fee ..... 37

        Fingerprinting Fee ..... 37

    Airside Vehicle Decal, Training Decal and Decal/Permit Replacement Fees ..... 37

        AOA Decals..... 37

        AOA Decals (Lost or Unaccounted)..... 37

        AOA Driver Training ..... 37

        AOA Movement Area Training..... 37

        Loading Bridge Training ..... 37

        Decal/Permit Replacement Fee..... 37

        AOA Decal Late Application Fee..... 30, 37

    Into-Plane Fueling Recommended Fees (Non-Commercial Aircraft) ..... 37

    Airline VIP Clubs..... 37

        Opportunity Fee ..... 37

        Concession Fee ..... 37

    Airspace Evaluation ..... 38

    Preliminary and Final Airspace Letter of Determination ..... 38

    Letter of Determination Fee (Land Use Zoning Analysis)..... 38

    MDAD Technical Reviews and Written Comments ..... 39

        Cell Towers and Other Structures Under 200 Feet Above Mean Sea Level ..... 39

        Request for Written Comments ..... 39

        Request for Written Comments – Revised Plans..... 39

        Development Impact Committee or Equivalent Large-Scale Hearing Application. 39

        Permissible Crane (or Equipment) Height Determination..... 39

        Permissible Crane (or Equipment) Height Determination–Additional Coordinates. 39

        Request for New Letter of Determination Due to Expiration..... 39

    Passenger Facility Charge (PFC) ..... 39

**TABLE OF CONTENTS (continued)**

Other Fees ..... 40

    Auditorium Use Fee (Miami International Airport) ..... 40

    Conference Room Use Fee (Miami International Airport – Non Terminal) ..... 40

    Consular Lounge Annual Membership..... 40

    Consular Lounge Rental Fee for Non-Member Organizations..... 40

    Interfaith Chapel Fee ..... 40

    Digital Media Sales Fee (Fixed) ..... 40

    Digital Media Sales Fee (Per 1,000 Impressions)..... 40

    Electric Cart Registration Fee..... 40

    Electric Cart Lost Registration Fee..... 40

    Electric Cart Late Registration Fee..... 40

    Late Revenue Reporting Fee ..... 40

    Wheelchair Lift Fee ..... 40

    Security Violation Fee ..... 40

    Permit Application Fee for Provider of Goods and Services..... 40

    Permit Extension Fee..... 40

    Permit Penalty Fee for Non-Compliance..... 40

    Aircraft Demolition Fee..... 40

    Baggage or Property Impound Fee ..... 41

    Background Check Fee..... 41

    Animal Inspection Facility User Fees..... 41

    Average Electrical Consumption per Kilowatt Hour ..... 41

    Airside Enforcement Processing Fee ..... 41

    Violation Fees for Airport Concessionaires or Tenants..... 41

        Violation of Permitted Use of a Location..... 41

        Failure to Maintain Required Hours of Operation..... 41

        Failure to submit required documentation and reports..... 41

        Unauthorized Advertising..... 41

        Failure to Maintain Premises in a Clean State..... 41

        Failure to Maintain Pricing or Conduct Surveys ..... 41

        Installation of Unapproved Items ..... 41

        Violation of Other Terms and Conditions ..... 41

**APPENDICES**

**Appendix A**

Terminal Rental Calculation—Allocation of Expenses by Cost Center .....A-1 to A-6

**Appendix B**

CUTE / CUSS Exhibits ..... B-1 to B-6

**Appendix C**

Airport Traffic Report ..... C-1

SUMMARY TAB

**SUMMARY OF AIRLINE CHARGES  
MIAMI INTERNATIONAL AIRPORT  
FY 2017-18**

Rate Type	Adopted FY 2015-16	Adopted FY 2016-17	Adopted FY 2017-18	Variance Adopted vs. FY 2017	
				Amount	Percentage
<b>AIRFIELD</b>					
Landing Fees	\$1.68	\$1.63	<i>\$1.67</i>	\$0.04	2.4%
Loading Bridge	\$35.00	\$35.00	<i>\$35.00</i>	\$0.00	0.0%
Preconditioned Air:					
Narrow-body	\$18.34	\$18.34	<i>\$18.34</i>	\$0.00	0.0%
Wide-body	40.58	40.58	<i>40.58</i>	-	0.0%
Jumbo-body	54.15	54.15	<i>54.15</i>	-	0.0%
<b>TERMINAL</b>					
<b>Domestic Arriving Seat</b>					
Concourse	\$4.27	\$4.09	<i>\$4.18</i>	\$0.09	2.2%
Baggage Claim	1.49	1.42	<i>1.53</i>	0.11	7.7%
	<u>\$5.76</u>	<u>\$5.51</u>	<u><i>\$5.71</i></u>	<u>\$0.20</u>	3.6%
<b>Domestic Departing Seat</b>					
Concourse	\$4.27	\$4.09	<i>\$4.18</i>	\$0.09	2.2%
Screening	0.43	0.43	<i>0.47</i>	0.04	9.3%
Baggage Make-up Maintenance (1)	0.69	0.78	<i>0.82</i>	0.04	5.1%
Baggage Make-up Capital (4)	0.37	0.35	<i>0.36</i>	0.01	2.9%
	<u>\$5.76</u>	<u>\$5.65</u>	<u><i>\$5.83</i></u>	<u>\$0.18</u>	3.2%
<b>International Arriving Seat</b>					
Concourse	\$4.27	\$4.09	<i>\$4.18</i>	\$0.09	2.2%
International Facilities	2.20	2.16	<i>2.16</i>	-	0.0%
	<u>\$6.47</u>	<u>\$6.25</u>	<u><i>\$6.34</i></u>	<u>\$0.09</u>	1.4%
<b>International Departing Seat</b>					
Concourse	\$4.27	\$4.09	<i>\$4.18</i>	\$0.09	2.2%
Screening	0.43	0.43	<i>0.47</i>	0.04	9.3%
Baggage Make-up Maintenance (1)	0.69	0.78	<i>0.82</i>	0.04	5.1%
Baggage Make-up Capital (4)	0.37	0.35	<i>0.36</i>	0.01	2.9%
	<u>\$5.76</u>	<u>\$5.65</u>	<u><i>\$5.83</i></u>	<u>\$0.18</u>	3.2%
<b>Terminal Rent</b>					
Class I	\$84.90	\$86.94	<i>\$88.18</i>	\$1.24	1.4%
Class II	127.35	130.41	<i>132.27</i>	1.86	1.4%
Class III	84.90	86.94	<i>88.18</i>	1.24	1.4%
Class IV	42.45	43.47	<i>44.09</i>	0.62	1.4%
Class V	21.23	21.74	<i>22.05</i>	0.31	1.4%
Class VI	84.90	86.94	<i>88.18</i>	1.24	1.4%
<b>CUTE Rates</b>					
Infrastructure Fee per Departing Seat (2)	\$0.02	\$0.02	<i>\$0.02</i>	\$0.00	0.0%
Gate Usage Fee per Departing Seat	0.19	0.18	<i>0.19</i>	0.01	5.6%
CUTE Equipment Rental (3)	\$0.54	\$0.53	<i>\$0.49</i>	(\$0.05)	-8.5%
Class I Rental (3)	0.39	0.38	<i>0.37</i>	(0.01)	-1.8%
Class IV Rental (3)	0.86	0.86	<i>0.83</i>	(0.03)	-3.0%
Common Use Display (3)	0.03	0.03	<i>0.03</i>	(0.00)	-3.3%
Ticket Counter Usage Fee (3)	<u>\$1.82</u>	<u>\$1.80</u>	<u><i>\$1.72</i></u>	<u>(\$0.08)</u>	-4.4%

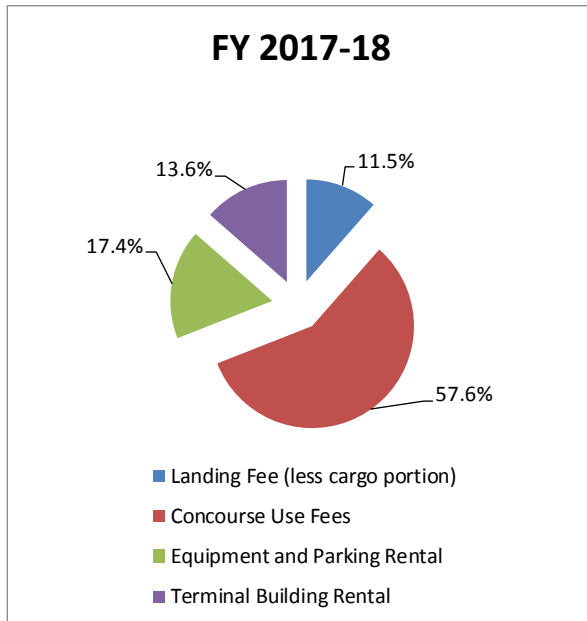
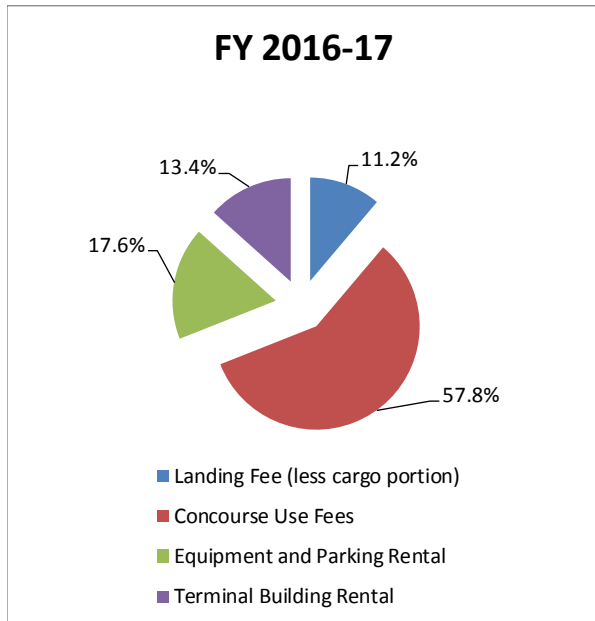
- (1) American Airlines is excluded from this charge because this airline maintains its own baggage system.
- (2) Fee is paid by all MIA passenger air carriers as an increase in the concourse use fee.
- (3) CUTE equipment rental, space rental and backwall display charges are based on departing seats effective Oct. 1, 2014.
- (4) The capital recovery portion of Baggage Make-up is charged to all airlines.

**AIRLINE COST PER ENPLANED PASSENGER**  
**Miami-Dade County Aviation Department**  
**Miami International Airport**  
**FY 2017-18**

		<u>FY 2016-17</u>	<u>FY 2017-18</u>
Landing Fee (less cargo portion) CUTE System		\$49,331,086	\$50,935,905
Concourse Use Fees		255,046,432	255,656,055
Equipment and Parking Rental		77,807,614	77,256,373
Terminal Building Rental		<u>58,937,255</u>	<u>60,261,902</u>
Total Airline Payments	[A]	\$441,122,387	\$444,110,235
Enplaned Passengers	[B]	22,500,000	22,750,000
<b>Airline Cost per Enplaned Pax.</b>	[A/B]	<b>\$19.61</b>	<b>\$19.52</b>
<b>Airline Cost per Enplaned Pax per Traffic Engineers (a)</b>		<b>\$21.13</b>	<b>\$21.42</b>

Notes:

(a) FY 2016-17 and FY 2017-18 represent the forecast airline cost per enplaned passenger contained in the Traffic Engineers report prepared by LeighFisher Inc. contained in the Aviation Revenue and Revenue Refunding Bonds, Series 2015 Official Statement.





## AIRLINE RATES AND CHARGES METHODOLOGY AT MIAMI INTERNATIONAL AIRPORT

### RESIDUAL LANDING FEE

- MDAD employs an “**airport system residual**” formula to calculate MIA landing fees.
- MDAD typically calculates landing fees effective October 1 based upon budget estimates and, if necessary, adjusts landing fees effective April 1 based upon revised estimates.
- Each year MDAD calculates MIA landing fees in such a way as to insure that revenues from landing fees together with revenues from all other sources will be at least sufficient to meet the requirements of the PAP Rate Covenant.

### *Landing Fee Calculation*

#### **Revenue Requirement**

+	Principal and Interest Requirements
+	20 percent coverage margin
+	Current Expenses
+	Changes in operating reserve
+	Deposit to Bond Reserve Account
+	Deposit to Reserve Maintenance Fund
+	Debt service on commercial paper
+	Debt service on other indebtedness
+	Required deposits for commercial paper and other indebtedness
+	Interest earnings—Reserve Maintenance Fund
+	Interest earning—Improvement Fund
=	Total Revenue Requirement

#### **Revenue Credits**

-	Aviation Fees
-	Terminal Rentals
-	Commercial Revenues
-	Other Revenues
-	Deposit from Improvement Fund
-	PAP Revenues net of Landing Fees
=	Subtotal Revenue Credits
+	Revenues for September landings
=	Total Revenue Credits

**Revenue Requirement less Revenue Credits = Landing Fee Requirement**

**Divided by Total Landed Weight (11 months October thru August)**

**= Landing Fee Rate**

## TERMINAL RENTALS

- MDAD calculates terminal rents using a cost recovery approach under an equalized rate methodology. This means that rates for space are uniform within a category regardless of when the facility was built. (Concourse space in Concourses A and H have the same rental rates as similar categories of space in Concourses F and G.)
- The terminal rental rates and terminal user fees are effective October 2017 based upon the annual budget and are not adjusted at mid-year.
- Terminal rental rate is calculated using a weighted rate based upon space classification, which is determined based on the type of space being utilized. Detailed information regarding this calculation and the space classification definitions are contained in the appendix at the end of the presentation.

### *Classification of Terminal Space*

**Class I**—all space related to airline regular and special passenger service facilities, including ticket and interline counters, passenger service centers, and the like.

**Class II**—airline club rooms and all air-conditioned office space in the main Terminal Building, including the office tower, baggage service rooms and excluding the concourses outboard of security screening.

**Class III**—all other air-conditioned operating space including baggage claim, hold rooms, group rooms, concourse office space and the like.

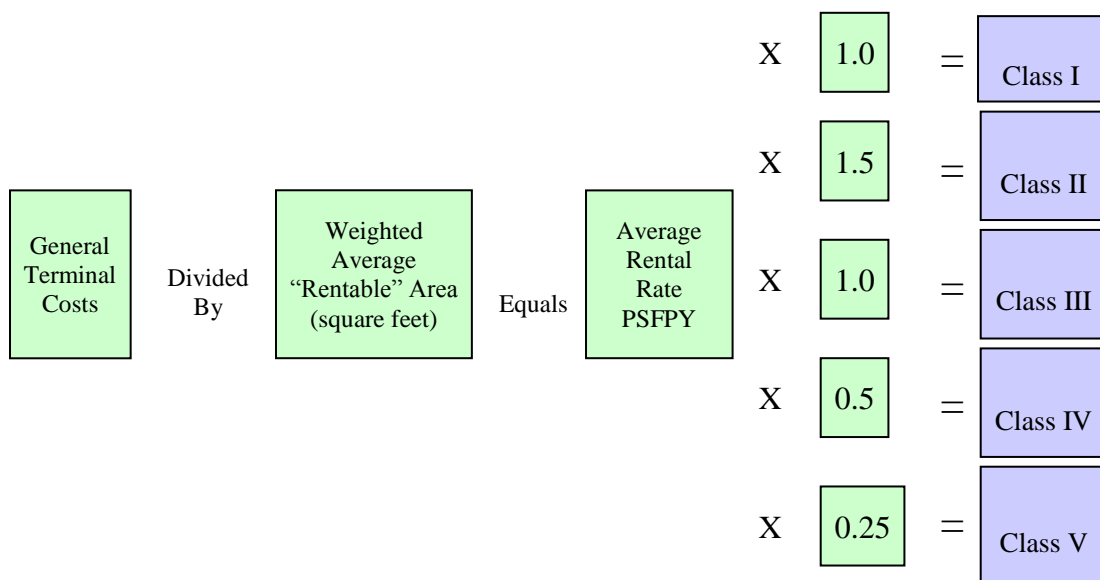
**Class IV**—all enclosed or semi-enclosed non-air-conditioned operating space including baggage make-up areas, parts storage and the like.

**Class V**—leased space created as part of the building shadow line, included in the Terminal pursuant to the definition of Terminal Building in the Lease.

**Class VI**—all other leasable revenue producing and concession space.

Nonrentable (support) space (**Class VII**) is apportioned to rentable areas.

### *Terminal Rental Rate Weighted Space Calculation*



### Terminal User Fees

- **Concourse Use Fee**—*Per arriving and per departing aircraft seat*  
For the use of holdrooms, gate positions, and related passenger circulation areas that are made available to airlines on a common-use basis.
- **Domestic Baggage Claim Fee**—*Per arriving domestic aircraft seat*  
For the use of terminal space and specialized terminal equipment dedicated to the domestic baggage claim function.
- **Screening Fee**—*Per departing aircraft seat*  
For checkpoint security costs incurred by MDAD.
- **International Facilities Fee**—*Per arriving international aircraft seat*  
For international capital and operational costs.
- **Outbound Baggage Fee**—*Per departing domestic and international seat (except for departing seats of airlines that operate and maintain their own outbound baggage system such as American)*  
For outbound baggage systems equipment and operational costs.

### Terminal User Fees Calculation

USE	Equals	RATE	Divided By	ACTIVITY
Concourse		Class III rental rate x Areas for holdrooms, domestic & int'l "sterile" circulation, FIS processing, & int'l baggage claim = Space costs (equivalent rental)		Arriving and departing seats
Domestic Baggage Claim		Space costs for domestic baggage claim + Cost of domestic claim equipment		Arriving domestic seats
Screening		Cost of screening equipment + Operating		Departing seats
International Facilities		Portion of costs of "E-satellite" shuttle + Int'l operations		Arriving international seats
Outbound Baggage – O&M		Operating expenses related to conventional system and to laser systems acquired from EA & PA		Departing seats (except AA)
Outbound Baggage – Capital		Amortization expense related to "conventional" portion of AA, EA, & PA laser systems		Departing seats

## Airside Tab

**LANDING FEE CALCULATION  
MIAMI INTERNATIONAL AIRPORT  
For Fiscal Years Ended September 30**

<b>Landing Fee Calculation</b>	<b>Budget Calculation</b>		<b>Variance</b>	<b>% Chg.</b>
	<b>FY 2016-17</b>	<b>FY 2017-18</b>		
<b>Airport System Requirement:</b>				
Principal & Interest Requirement	\$388,555,397	<b>\$383,234,403</b>	(\$5,320,994)	-1.4%
Less: PFC Revenue	(63,000,000)	<b>(58,000,000)</b>	5,000,000	-7.9%
Net P & I Requirement	\$325,555,397	<b>\$325,234,403</b>	(\$320,994)	-0.1%
Times Coverage Factor	<u>1.20</u>	<u>1.20</u>		
P&I Requirement Plus Coverage	\$390,666,476	<b>\$390,281,284</b>	(\$385,192)	-0.1%
Current Expenses	484,297,702	<b>498,411,361</b>	14,113,659	2.9%
Increase/(Decrease) in O&M Reserve	1,739,019	<b>2,399,322</b>	660,303	38.0%
Deposit from Bond Service Account (Interest)	(3,000,000)	<b>(3,000,000)</b>	0	0.0%
Deposit to Reserve Maintenance Fund	30,000,000	<b>20,000,000</b>	(10,000,000)	-33.3%
Subordinate Debt Payment	22,171,965	<b>20,461,136</b>	(1,710,829)	-7.7%
<b>Total Requirement</b> [A]	\$925,875,162	<b>\$928,553,103</b>	\$2,677,941	0.3%
<b>Less: Revenues Net of Landing Fees</b>				
Aviation Fees	\$332,854,046	<b>\$332,912,428</b>	\$58,382	0.0%
Terminal Rentals	68,640,036	<b>70,235,341</b>	1,595,305	2.3%
Structure & Other Rentals	65,532,941	<b>67,309,041</b>	1,776,100	2.7%
Commercial Revenues	282,002,883	<b>277,304,973</b>	(4,697,911)	-1.7%
Other Revenues	21,946,016	<b>21,928,736</b>	(17,280)	-0.1%
G/A Airports	8,349,692	<b>8,480,027</b>	130,335	1.6%
Transfer from Improvement Fund (Deposit to RF)	85,000,000	<b>87,000,000</b>	2,000,000	2.4%
<b>Total Revenues</b> [B]	\$864,325,615	<b>\$865,170,546</b>	\$844,931	0.1%
<b>Amount Recovered from Landing Fees</b> [A-B] [C]	\$61,549,547	<b>\$63,382,557</b>	\$1,833,010	3.0%
Less: Sept. collections (prior yr) from Ldg. Fees [D]	\$4,763,297	<b>\$4,555,020</b>	(208,277)	-4.4%
<b>Net Amt Recovered from Landing Fees</b> [C-D] [E]	\$56,786,250	<b>\$58,827,537</b>	\$2,041,287	3.6%
Estimated Landed Weight in 1,000 lb. units (1) [F]	34,765,000	<b>35,161,000</b>	396,000	1.1%
<b>Landing Fee Rate (per 1,000 lb. unit)</b> [E/F] [G]	<b>\$1.63</b>	<b>\$1.67</b>	\$0.04	2.4%
<b>Total Landing Fee Revenue</b> [G*F+D]	<b>\$61,549,547</b>	<b>\$63,382,557</b>	\$1,833,010	3.0%

(1) Represents estimated landed weight for 11 months.

## AIRCRAFT PARKING FEES MIAMI INTERNATIONAL AIRPORT

*(Policy last updated October 1, 2008 and is subject to change)*

**Regular Aircraft Parking** – Passenger aircraft using terminal gates, hardstands or remote positions will accrue parking fees if any of the following conditions exist:

- (A) Aircraft that park on a hardstand or remote position will be charged after a two (2) hour grace period. Subsequent daily charges will apply every 24 hours.
- (B) Aircraft that park at a terminal gate will be charged the first day parking charge after a four (4) hour grace period. Subsequent daily charges will apply every 24 hours.

Regular aircraft parking charges will reflect (24 hour) daily rates for 1 to 5 days, 6 to 15 days, 16 to 30 days, and 31+ days. Minimum charge for M-1 type aircraft will be **\$13.00 per day** for 1 to 5 days and increase thereafter. Aircraft parking rates for 1 to 5 days are calculated by multiplying the ground rental rate by aircraft shadow (length x wingspan) then dividing by 365 (days per year). This rate is then increased by a factor of 1.5 for the 6 to 15 day rate; a factor of 2 for the 16 to 30 day rate and a factor of 4 for the 31+ day rate. An aircraft take-off and landing will allow the parking rate to revert back to day one (1). No aircraft parking at MIA shall exceed forty-five (45) consecutive days without express written consent from the Assistant Director of Airside Operations, or an Airside Division designee.

**Overtime Parking** - Aircraft and/or ground service equipment (GSE) that do not depart or are not removed from the terminal gates, hardstands and cargo spots at the agreed upon time, and cause another aircraft to hold for that gate, hardstand or cargo spot, or block its departure from that gate, hardstand or cargo spot, or causes a gate or spot change will be charged for overtime parking.

Overtime parking charges are assessed at the rate of \$100.00 per 30 minutes or fraction thereof in excess of one hour for deplanements, one hour for enplanements, and two hours for an arrival/departure turnaround.

**Premium Charges** - Per Resolution No R-730-80, regular commercial users who do not have an MDAD credit account in good standing and who have had more than six (6) landings during any 90-day period, will be assessed an additional premium charge. The premium charge amounts to 50% of all aviation fees and charges. Regular commercial users are defined as those who operate aircraft for compensation or hire. The premium charge will be assessed starting on the seventh (7<sup>th</sup>) landing and will be added to the total of all other aviation fees charged.

**Major Maintenance** - Aircraft on regular aircraft parking that are performing major maintenance will be charged a major maintenance fee separately from the storage parking fee.

Aircraft requiring major maintenance (other than regular turn-around maintenance) while parked at common use aircraft parking positions will be charged \$300.00 per 24-hour period.

## **AIRCRAFT PARKING FEES (continued)**

**Cargo Aircraft Parking Position Fees**—payable whenever an aircraft uses a designated MDAD cargo position. Fees commence on the arrival of the aircraft at the cargo position. Charges are listed below.

- Aircraft 60,000 lbs and under in landed weight
  - First 4 hours \$60.00
  - Each additional hour \$15.00
  - 24 hour maximum \$360.00
  
- Aircraft between 60,001 and 270,000 lbs in landed weight
  - First 4 hours \$120.00
  - Each additional hour \$30.00
  - 24 hour maximum \$720.00
  
- Aircraft in excess of 270,000 lbs in landed weight
  - First 4 hours \$200.00
  - Each additional hour \$60.00
  - 24 hour maximum \$1,400.00

**Derelict or Non-Operating Aircraft** - Fee of up to \$500.00 per day for each day a tenant or airport user parks or stores a derelict or non-operating aircraft of any size or parts thereof on airport premises beyond the permitted sixty (60) day period.

### **New Fees for Charter Airlines (effective October 1, 2006)**

**VIP Ramp Escort Fee** – MIA provides a premium service whereby passengers are escorted directly to or from the steps of the aircraft parked at an airfield location. The charter operator is responsible for providing the passenger ground transportation vehicle, which must be escorted onto the airfield by MDAD personnel.

All of the following fees apply to charter operators providing this service to their customers:

1. An escort/attendant fee associated with the mandatory escort of vehicle(s) to be used for transporting passengers on the airfield. Fee will be \$150.00 for each hour (2-hour minimum) to cover escort vehicles' operating costs and labor (escort/attendant).
2. A fee for the use of MDAD owned stair truck (if used) as listed in the Ground Support Charges schedule (page 12).
3. Landing Fee (for arriving charters) as shown on the Summary of Airline Charges (page 2) schedule.
4. Inspection Fees: charter operator will be responsible for arranging separately and paying for, applicable services required by Federal agencies including the TSA (Transportation Security Administration) for departing flights, and FIS (Federal Inspection Services) for arriving international flights.

### **HANDLING BY FBO (Fixed Base Operator)**

A charter operator may contract with an FBO to perform various ground handling services. Such services are provided on the premises of the FBO. In addition to landing fees and other charges that the FBO may be required to collect for the use of various Airport facilities and services, the FBO may establish its own charges for services rendered. Charter operators should contact the FBO for all charges.

### **HANDLING BY AUTHORIZED GROUND HANDLER**

Authorized ground handlers compete for the services of charter and scheduled airline operators at MIA. Such ground handlers utilize the existing terminal facilities (check-in counters and gates) to process passengers, baggage and the aircraft. Charter operators contract directly with such ground handlers. In addition to landing fees and other charges that the ground handler may be required to collect for the use of various Airport facilities and services, the ground handler may establish its own charges for services rendered. Charter operators should contact the ground handler for all charges.

### **HANDLING BY MAINTENANCE REPAIR OVERHAUL (MRO) ENTITY**

For the privilege of providing maintenance, repair, and services for aircraft at MIA, MRO's are responsible for payment to MDAD of all landing and aviation fees applicable to aircraft during the time the aircraft is being serviced by an MRO except to the extent such fees are recoverable under an Airline Use Agreement or Sales Ticket Agreement applicable to the owner or operator of such aircraft.

***SEE SCHEDULE AT THE END OF THIS SECTION FOR LANDED WEIGHT AND AIRCRAFT PARKING COST BY AIRCRAFT TYPE***



**GROUND SUPPORT CHARGES  
MIAMI INTERNATIONAL AIRPORT  
AS OF OCTOBER 2017**

**Pre-conditioned Air** All aircraft using a gate equipped with preconditioned air will be charged preconditioned air fees. The use for the aircraft preconditioned air supply equipment will continue to be assessed to all airlines using the system by aircraft type. The rates will remain as follows:

<b>Narrow Body (N)</b>	<b>=</b>	<b>\$18.34 for any use (per arrival – no time limit)</b>
<b>Wide Body (W)</b>	<b>=</b>	<b>\$40.58 for any use (per arrival – no time limit)</b>
<b>Jumbo Body (J)</b>	<b>=</b>	<b>\$54.15 for any use (per arrival – no time limit)</b>

MDAD account customers will report all preconditioned air system uses directly to the Finance Division on a monthly basis. The Finance Division will supply the correct form for reporting the usage.

**MDAD Loading Bridges** = **\$35.00 per arrival and/or \$35.00 per departure.** All aircraft using additional loading bridges (more than one) will be charged \$35.00 per arrival and/or \$35.00 per departure for each additional loading bridge used.

**MDAD VDGS (Visual Docking Guidance System) Loading Bridge Fee** = **\$5.00 per loading bridge use for gates equipped with VDGS aircraft arrival system.** This charge will be assessed in addition to the standard loading bridge fee. Gates not equipped with VDGS will be charged the standard loading bridge fee.

**Stair Truck Usage Fee** = **\$100.00 per hour** Note: This fee is only waived for use on United States military aircraft.

**Escort Fee - Aircraft** = **\$100.00 per escort**

**Escort Fee - Delivery Vehicles or Non-Passenger Vehicles** = **\$10.00 per escort**

**Escort Fee - Vehicle Escort for VIP Pickup at General Aviation Aircraft** = **\$20.00 per escort**

**Fuel Stop Fees:**

- Terminal Gate – Aircraft using a terminal gate for a fuel stop will be charged a terminal fuel stop fee equivalent to a concourse fee, and a one-way loading bridge fee for a maximum of two (2) hours. Any additional time will incur overtime parking fees.
- Remote Locations and General Aviation Center (GAC) – A fuel stop fee equivalent to a one-day parking charge per aircraft type will be charged at remote locations and the General Aviation Center for aircraft refueling operations up to a maximum of two (2) hours. Any additional parking time will incur parking fees.

**General Aviation Center (GAC) Facility Fee**

- GAC Domestic Fee – The fee shall be equal to the base concourse use fee for each inbound and each outbound domestic operation performed by commercial operators carrying passengers for hire that use the domestic portion of the GAC facility.
- GAC International Fee – The fee shall be equal to the base concourse use fee and international facility fee for each international arrival, and a base concourse fee for each international departure performed by commercial operators carrying passengers for hire that use the international portion of the GAC facility.













## TERMINAL TAB

**AIRLINE ACTIVITY BASED FEES CALCULATION  
MIAMI INTERNATIONAL AIRPORT  
FOR FISCAL YEARS ENDING SEPTEMBER 30,**

**CONCOURSE USE FEE CALCULATION**

		<u>FY 2016-17</u>	<u>FY 2017-18</u>
Domestic Concourse Airline Sq. Ft.	[A]	1,200,280	1,124,572
International Concourse Airline Sq. Ft.	[B]	1,412,471	1,433,454
<b>Total Concourse Airline Square Feet</b>	<b>[C=A+B]</b>	<b>2,612,751</b>	<b>2,558,026</b>
Class III Terminal Rental Rate	[D]	\$86.94	\$88.18
Equivalent Concourse Rent	[E=CxD]	\$227,152,572	\$225,566,733
<b>Total Arriving/Departing Seats</b>	<b>[F]</b>	<b>55,500,000</b>	<b>54,000,000</b>
<b>Fee per Seat</b>	<b>[E/F]</b>	<b>\$4.09</b>	<b>\$4.18</b>

**BAGGAGE CLAIM FEE CALCULATION**

Baggage Claim Square Feet	[A]	198,863	198,863
Class III Terminal Rental Rate	[B]	\$86.94	\$88.18
Equivalent Rent	[C=AxB]	\$17,289,149	\$17,535,739
Baggage Claim Eqpmt & Maintenance Costs	[D]	<u>3,639,533</u>	<u>3,658,302</u>
<b>Total for Recovery</b>	<b>[E=C+D]</b>	<b>\$20,928,682</b>	<b>\$21,194,042</b>
Domestic Arriving Seats	[F]	14,764,545	13,879,332
<b>Fee per Seat</b>	<b>[E/F]</b>	<b>\$1.42</b>	<b>\$1.53</b>

**SCREENING USE FEE CALCULATION**

Screening Costs		\$12,788,500	\$13,182,900
Less: Reimbursement from TSA		<u>(500,000)</u>	<u>(500,000)</u>
	[A]	\$12,288,500	\$12,682,900
Total Departing Seats	[B]	28,423,237	26,999,249
<b>Fee per Seat</b>	<b>[A/B]</b>	<b>\$0.43</b>	<b>\$0.47</b>

**INTERNATIONAL FACILITIES USE FEE CALCULATION**

International Facilities Costs	[A]	\$23,792,739	\$25,563,006
QAS Porter Service Equipment Reimbursement	[B]	<u>0</u>	<u>0</u>
	[C=A+B]	\$23,792,739	\$25,563,006
International Inbound - Class IV - South Terminal	[D]	16,995	16,995
International Inbound - Class IV - North Terminal	[E]	<u>47,240</u>	<u>47,240</u>
	[F=D+E]	64,235	64,235
Class IV Terminal Rental Rate	[G]	<u>\$43.47</u>	<u>\$44.09</u>
International Inbound Costs	[H=FxG]	\$2,792,295	\$2,832,121
International Facilities and Inbound Costs	[I=C+H]	\$26,585,034	\$28,395,127
International Arriving Seats	[J]	12,312,218	13,121,419
<b>Fee per Seat</b>	<b>[I/J]</b>	<b>\$2.16</b>	<b>\$2.16</b>



**TERMINAL RENTAL RATES CALCULATION  
MIAMI INTERNATIONAL AIRPORT  
FOR FISCAL YEARS ENDING SEPTEMBER 30,**

**AVERAGE (CLASS III) TERMINAL RENTAL RATE CALCULATION**

		<u>FY 2016-17</u>	<u>FY 2017-18</u>
Terminal Rent Requirement	[A]	\$447,302,674	<b>\$452,479,408</b>
Weighted Revenue Sq. Ft.	[B]	5,145,210	<b>5,131,529</b>
 Class III Rate per Sq. Ft.	 [A/B]	 <b>\$86.94</b>	 <b>\$88.18</b>

**WEIGHTED RENTAL RATES CALCULATION**

<u>Type of Space</u>	<u>Class III Rate</u>	<u>Weight Factor</u>	<u>Rate</u>	<u>Airline Rented Space</u>	<u>Total Airline Revenue</u>
	[A]	[B]	[C=AxB]	[D]	[Cx D]
<b><u>FY 2016-17</u></b>					
Class I	\$86.94	1.00	\$86.94	15,671	\$1,362,437
Class II	\$86.94	1.50	130.41	126,770	16,532,076
Class III	\$86.94	1.00	86.94	237,965	20,688,677
Class IV	\$86.94	0.50	43.47	214,609	9,329,053
Class V	\$86.94	0.25	21.74	11,879	258,249
Class VI	\$86.94	1.00	86.94	3,950	343,413
				<hr/>	
				610,844	\$48,513,905
<b><u>FY 2017-18</u></b>					
Class I	<b>\$88.18</b>	<b>1.00</b>	<b>\$88.18</b>	<b>15,671</b>	<b>\$1,381,869</b>
Class II	<b>88.18</b>	<b>1.50</b>	<b>132.27</b>	<b>131,770</b>	<b>17,429,218</b>
Class III	<b>88.18</b>	<b>1.00</b>	<b>88.18</b>	<b>237,965</b>	<b>20,983,754</b>
Class IV	<b>88.18</b>	<b>0.50</b>	<b>44.09</b>	<b>214,609</b>	<b>9,462,111</b>
Class V	<b>88.18</b>	<b>0.25</b>	<b>22.05</b>	<b>11,879</b>	<b>261,932</b>
Class VI	<b>88.18</b>	<b>1.00</b>	<b>88.18</b>	<b>3,950</b>	<b>348,311</b>
				<hr/>	
				<b>615,844</b>	<b>\$49,867,194</b>

## CUTE RATES MIAMI INTERNATIONAL AIRPORT FY 2018

### CUTE Gate Rates

- Infrastructure Fee—**\$0.02 per departing seat**
- Gate Usage Fee (CUTE Equipment Rental)—**\$0.19 per departing seat**

**Ticket Counter Usage Fee** – *The Aviation Department began recovering CUTE costs through departing seats effective Oct. 1, 2014.*

	<u>Fee per Departing Seat</u>	<u>Fee per ticket counter hour *</u>
CUTE Equipment Rental	\$0.49	\$5.18
Class I Rental Expense for Ticket Counter	0.37	3.99
Class IV Rental Expense for Baggage Makeup	0.83	9.80
CUTE Dynamic Signage (Back-wall Displays)	<u>0.03</u>	<u>0.31</u>
<b>Total</b>	<b><u>\$1.72</u></b>	<b><u>\$19.28</u></b>

Maximum daily rate per ticket counter - **\$231.36 (12 hours multiplied by Ticket Counter Usage Fee)\***

*\* Applies to CUTE-exempt carriers only*

### CUTE Dynamic Signage (Back-wall Displays)

- Maximum monthly rate - **\$50.00 per ticket counter position.**
- Annual rate for back-wall displays located within leased areas - **\$1,200.00 per display.**

**CUTE Back-office / Operations / Educational Equipment** – the monthly charge will apply to vendor-maintained CUTE equipment located in leased areas. Wiring and cabling installation will be charged separately.

- **Monthly Charge per Unit - \$105.27**

### Manual CUTE Ticket Counter Rates

Rates apply to airlines that use CUTE ticket counters but process their passengers manually. These rates also apply to General Aeronautical Service Permittees (GASPer) who process passengers for airlines that do not have a Terminal Agreement with MDAD.

- **Standard Manual Rate -**
  - \* **Wide-body aircraft (over 200 seats) - \$539.92 per flight**  
Based on seven ticket counters at four hours each = 7 x 4 x hourly ticket counter usage fee of \$19.28
  - \* **Narrow aircraft (101 seats through 200 seats) - \$308.52 per flight**  
Based on four ticket counters at four hours each = 4 x 4 x hourly ticket counter usage fee of \$19.28
  - \* **Regional Commuter aircraft (20 seats through 100 seats) - \$154.26 per flight**  
Based on two ticket counters at four hours each = 2 x 4 x hourly ticket counter usage fee of \$19.28
  - \* **Small Turbo aircraft (under 20 seats) - \$77.13 per flight**  
Based on two ticket counters at four hours each = 1 x 4 x hourly ticket counter usage fee of \$19.28
  
- **Unauthorized Manual Rate** – Airline is charged unauthorized rates if the CUTE system was available and they did not use it.
  - \* **Wide-body aircraft (over 200 seats) - \$1,079.83 per flight**  
Based on seven ticket counters at four hours each = 7 x 4 x hourly ticket counter usage fee of \$19.28 + 100% premium
  - \* **Narrow aircraft (101 seats through 200 seats) - \$617.05 per flight**  
Based on four ticket counters at four hours each = 4 x 4 x hourly ticket counter usage fee of \$19.28 + 100% premium
  - \* **Regional Commuter aircraft (20 seats through 100 seats) - \$308.52 per flight**  
Based on four ticket counters at four hours each = 2 x 4 x hourly ticket counter usage fee of \$19.28 + 100% premium
  - \* **Small Turbo aircraft (under 20 seats) - \$154.26 per flight**  
Based on four ticket counters at four hours each = 1 x 4 x hourly ticket counter usage fee of \$19.28 + 100% premium

**CUTE RATES  
MIAMI INTERNATIONAL AIRPORT  
FY 2018**

**Miscellaneous CUTE Charges**

**Hourly Charges (TWOV lounges, ITI lounges, ITI baggage, and Ramp Baggage Make-up) -** the fee shall be \$5.18 per hour for each respective area.

**Cruise Check-In Facility at Miami Seaport maintenance charges (added to CUTE hourly usage fees)** – on-site maintenance single circuit is \$10.00 per hour with back-up circuit at \$10.34 per hour. For on-call maintenance (response within two hours) the fee is \$3.16 per hour for single circuit and \$3.51 per hour for back-up circuit.

**CUTE Rate Based on Departing Aircraft Seat** – A CUTE rate of \$1.72 per departing aircraft seat will be charged to non-exempt carriers.

**CUSS Charges (Common Use Self Service)**

**Per Transaction Fee** – the fee shall be \$0.58 per transaction at all Miami-Dade Aviation Department common use CUSS units.

**Monthly Fee (Desktop Unit)** – The fee shall be **\$45.96 per unit, per month.** Includes hardware/software costs and operation & maintenance costs.

**Monthly Fee (Standalone Unit)** – The fee shall be **\$90.05 per unit, per month.** Includes hardware/software costs, 6 sq. ft. of class I space at current rate and operation & maintenance costs.

**Closed-Circuit Television (CCTV)**

**Cameras**

- PTZ (Pan-Tilt-Zoom) \$24.00 each, per month
- Fixed \$16.00 each, per month

**Viewing/Workstations**

- Cellstack/NICE (1) \$614.00 each, per month
- Cellstack (2) \$553.00 each, per month
- NICE (3) \$461.00 each, per month

**Recording – Per Port**

- NICE Pro (30-day recording) \$14.00 each, per month
- NICE Harmony (20-day recording) \$9.00 each, per month

- (1) *Required for recording*
- (2) *Digital quality viewing without recording capability*
- (3) *Standard quality viewing without recording capability*

**CALCULATION OF CUTE FEES  
MIAMI-DADE AVIATION DEPARTMENT  
For Fiscal Year Ending September 30**

		Budget			
		FY2017		FY2018	
<b>Infrastructure Fee (included in Concourse Use Fee)</b>					
Operating Costs		\$	438,946		\$ 438,946
Equipment Costs (Core Room Hardware/Servers)			-		-
	[A]	\$	438,946		\$ 438,946
All Departing Seats Estimate	[B]		27,053,189		27,000,492
<b>Cost per Departing Seat</b>	[A/B]	<b>\$</b>	<b>0.02</b>		<b>\$ 0.02</b>
<b>Gate Usage Fee</b>					
Operating Costs		\$	942,212		\$ 1,088,242
Training Cost Allocation (5)			45,211		36,218
Telecom Charges			30,672		30,384
<b>Total Costs</b>	[C]	<b>\$</b>	<b>1,018,095</b>		<b>\$ 1,154,844</b>
CUTE Airlines Departing Seats Estimate	[D]		5,617,729		5,951,523
<b>Gate Usage Fee per Departing Seat</b>	[C/D]	<b>\$</b>	<b>0.18</b>		<b>\$ 0.19</b>
<b>Ticket Counter Usage Fee</b>					
Operating Costs	[a]	\$	2,865,127		\$ 2,779,259
Training Cost Allocation (5)	[a]		135,190		92,077
Telecom Charges	[a]		63,504		57,312
Ticket Counter Terminal Space Cost			2,218,709		2,254,375
CUTE Class I Terminal Space (sq. ft.) (1)			31,900		31,957
x Class I Terminal Rental Rate		\$	86.94		\$ 88.18
x Vacancy Factor applied to CUTE Class I sq ft			20%		20%
Outbound Bag Makeup Terminal Space (sq. ft.)			4,968,491		5,039,355
CUTE Class IV Terminal Space in sq ft.			114,297		114,297
x Class IV Terminal Rental Rate		\$	43.47		\$ 44.09
<b>Total Ticket Counter CUTE Costs</b>	[E]	<b>\$</b>	<b>10,251,019</b>		<b>\$ 10,222,377</b>
CUTE Ticket Counter Hours Estimate (2)	[F]		600,000		565,000
CUTE Ticket Counter Hours Estimate without Outbd BMU (3)	[G]		550,000		514,000
			<i>Hourly</i>	<i>Per Seat (6)</i>	<i>Hourly</i> <i>Per Seat (6)</i>
<b>Ticket Counter Usage Fee</b>	[E/F]	<b>\$</b>	<b>17.84</b>	<b>\$ 1.77</b>	<b>\$ 18.98</b> <b>\$ 1.69</b>
<b>Ticket Counter Usage Fee W/O OUTBOUND BMU</b>	[E/G]	<b>\$</b>	<b>8.80</b>	<b>\$ 0.94</b>	<b>\$ 9.17</b> <b>\$ 0.89</b>
<b>Hourly Eqpmt Fee Chg for VIP Lounge</b>	[a/F]	<b>\$</b>	<b>5.11</b>	<b>n/a</b>	<b>\$ 5.18</b> <b>n/a</b>
<b>VIP Lounge Eqpmt Monthly Charge Cap (4)</b>		<b>\$</b>	<b>885.10</b>	<b>n/a</b>	<b>\$ 898.46</b> <b>n/a</b>
<b>Airline Back Office / Operations Eqpmt Monthly Charge</b>		<b>\$</b>	<b>198.86</b>	<b>n/a</b>	<b>\$ 105.27</b> <b>n/a</b>
<b>Common Use Display Charge</b>					
Operating Costs		\$	172,330	\$ 172,330	\$ 172,330    \$ 172,330
CUTE Ticket Counter Hours (2) or Seats Estimate	[H]		600,000	5,452,576	565,000    5,951,523
<b>Display Charge per Position</b>	[G/H]	<b>\$</b>	<b>0.29</b>	<b>\$ 0.03</b>	<b>\$ 0.31</b> <b>\$ 0.03</b>
<b>Exempt Airline Monthly Charge Cap</b>		<b>\$</b>	<b>50.00</b>	<b>n/a</b>	<b>\$ 50.00</b> <b>n/a</b>

(1) Exempt status ticket counter space is excluded from CUTE rate calculation.

(2) Based on an average of 4 hours per day per ticket counter position for 360 days.

(3) Same assumptions as footnote # (2) above, but excludes the CUTE ticket counter positions that feed to the AA/NTD baggage system.

(4) Based on hourly equipment rate multiplied by 40 hours per week multiplied by 52 weeks per year (2,080 hrs) divided by 12 months.

(5) Training costs include MDAD Training Room space rental at Class III rates.

(6) Effective Oct. 1, 2014 MDAD began charging non-exempt carriers for ticket counter usage based on departing seats.

## LANDSIDE TAB

**PUBLIC AND EMPLOYEE PARKING  
AT MIAMI INTERNATIONAL AIRPORT  
AS OF OCTOBER 2017**

**Public Parking**

Miami International Airport's parking facilities consist of two multi-level parking garages, identified as the DOLPHIN GARAGE and the FLAMINGO GARAGE.

**Standard Parking Rates:**

- Variable between \$8.00 and \$38.00 based on demand (Holidays, time of day, day of week, availability, etc.). *Standard parking rate of \$2.00 for each 20 minute increment or part thereof to a maximum of \$17.00 per day will remain in effect during this fiscal year, or until new rates are implemented by the Department during this fiscal year.*

**Valet Parking:**

- \$18.00 for the first 1-3 hours or part thereof. After 3 hours, the daily maximum will be \$30.00 per day.

**Parking Space Reservation Charge:**

- \$10.00 per vehicle parking space. This is a prepaid fee and charged in addition to existing vehicle parking rates. The space reservation expires when vehicle exits the reserved parking space.

**Terminal**

Both the DOLPHIN GARAGE and the FLAMINGO GARAGE connect to the Terminal Building by moving sidewalks, located on the 3rd level of the garages.

**Disabled Parking**

Designated disabled permit parking and stroller permit parking is available on the 3<sup>rd</sup> level of the garages.

**Over-height Vehicles**

Over-height vehicles may use the "High-Vehicle" surface lot parking area located adjacent to the East side of the DOLPHIN GARAGE.

**PUBLIC AND EMPLOYEE PARKING  
AT MIAMI INTERNATIONAL AIRPORT  
AS OF OCTOBER 2017**

**Employee Parking**

**Employee Parking Decals** - the fee shall be **\$30.00 per decal per month**. (Park 8 and Employee Parking Lot)

**Motorcycle Parking Fee** – the fee shall be **\$180.00 per decal per year**.

**Long-term Parking Magnetic Cards** - the fee shall be **\$100.00 per employee, per month**.

**Contractor Parking**

**Contractor Parking Cards** - the fee shall be **\$200.00 per card, per year**.

**Towed Vehicles**

The fee for towed vehicles shall be **\$50.00 per occurrence**.

**GROUND TRANSPORTATION FEES  
MIAMI INTERNATIONAL AIRPORT  
AS OF OCTOBER 2017**

SUB-CLASS	FEE
<i>The following deposit applies to all sub-classes except for Class D:</i> <ul style="list-style-type: none"> <li>• \$500 security deposit per company with less than 10 vehicles</li> <li>• \$1,000 per company with 10 or more vehicles</li> <li>• MDAD may waive the security deposit requirement for a company paying fees on a per trip basis and having a maximum of one trip per month</li> </ul>	
<b>Shuttle/Delivery Service</b>	
A1—Bus	\$7.00 per trip
A2—Van	\$3.00 per trip
A3—Limo	\$3.00 per trip
B1—Hotel/Motel (Small)	\$1.00 per trip
B2—Hotel/Motel (Large)	\$2.00 per trip
B3—Commercial (Small)	\$2.50 per trip
B4—Commercial (Large)	\$3.00 per trip
C1—Crew Service (Small)	\$1.00 per trip
C2—Crew Service (Large)	\$2.00 per trip
Class D—Delivery Service	MDAD may assess a fee within the range of \$1-\$12.00 which reflects the appropriate operating costs applicable to the service performed and the size of vehicle used.
<b>Off-Airport Rental Car Companies</b>	
B5—Off-airport Car Rental Companies with less than \$500,000 annual MIA gross revenues	\$3.00 for each MIA contract
B6—Off-airport Car Rental Companies with MIA gross revenues between \$500,000 and \$4.9 million annually	4.5% of gross revenues from MIA passengers
B7—Off-airport Car Rental Companies with MIA gross revenues in excess of \$5 million annually	7.5% of gross revenues from MIA passengers
<b>Off-Airport Parking Lot Operators</b>	
B8—Off Airport Parking Lot Operators (Small vans)	Upper Level—\$1.00 per trip Lower Level—\$2.50 per trip
B9—Off Airport Parking Lot Operators (Large vans)	Upper Level—\$2.00 per trip Lower Level—\$3.00 per trip
<b>Expedite Service Vehicle</b>	
Class E Vehicles (companies with courier vehicles, armored cars and expedite late baggage vehicles)	\$200.00 annual permit fee per vehicle

Class E permits also include food vendors who pay a \$360.00 yearly fee for the annual permit, which expires each December 31st.

For sub-class B7 having *less* than \$20 million in annual gross revenues from MIA passengers, the Aviation Department charges 7.5% of gross revenues. For sub-class B7 having \$20 million or *more* in annual gross revenues from MIA passengers, 9% of gross revenues is charged.



## **GROUND TRANSPORTATION FEES (continued)**

- **Mobile Food Truck Vendor Fee**—the annual fee shall be **\$360.00 per vehicle**. This fee will be assessed to mobile food truck vendors that sell food to the labor force at MIA.
- **Taxicab Operation Fee**—the fee shall be **\$2.00 per trip**.
- **Ground Transportation Permit Renewal Fee** – the annual fee shall be **\$100.00 per permit**.
- **Ground Transportation Permit Late Renewal Fee** – the fee shall be **\$100.00 per permit**.

## **AUTHORITY TO REVISE OR ADJUST BUILDING RENTAL RATES DURING PERIOD FOLLOWING BOARD OF COUNTY COMMISSIONERS ACTION AND BEFORE NEXT APPROVAL BY BOARD BASED ON REVISED APPRAISAL**

By establishing and authorizing the imposition of the rental rates reflected on the attached appraisal document or in this Budget, the Board also establishes and authorizes the Aviation Department to impose, during the period following the Board’s action and before the next approval by the Board of rental rates for the properties, any revised rental rates that are based on appraisals of any of the properties described in the attached document or the Budget that are obtained as a result of an appraisal performed under the authority of Board’s action or agreement previously approved by the Board.

## Miami International Airport Land Rental Rates Effective as of October 2017

The following rental rates are to be effective October 2017 and applied to all present and future leaseholds, when applicable. A map of land zone areas is attached.

Land Zone	Actual 2016-2017 Rate	Proposed 2017-2018 Rate
1 Airport	\$1.80 per sq.ft.	\$1.90 per sq.ft.
1a Airport – vacant land with aircraft access	N/A	N/A
2 Commercial sites at SEC of NW 36 <sup>th</sup> St & NW 72 <sup>nd</sup> Ave	\$2.20 per sq.ft.	\$2.25 per sq.ft.
3 N.W. 21 <sup>st</sup> St. and N.W. 39 <sup>th</sup> Avenue	\$2.75 per sq.ft.	\$2.85 per sq.ft.
4 Fuel Farm	\$2.10 per sq.ft.	\$2.15 per sq.ft.
5 N.W. corner of N.W. 97 <sup>th</sup> Avenue & N.W. 54 <sup>th</sup> Street	\$2.50 per sq.ft.	\$2.60 per sq.ft.
6 Jai-Alai fronton land area & NW 36 <sup>th</sup> Street Frontage	\$2.20 per sq.ft.	\$2.25 per sq.ft.
7 Commercial Sites on NW 12 <sup>th</sup> St & North of NW 36 <sup>th</sup> St	\$1.75 per sq.ft.	\$1.80 per sq.ft.

**NOTE:** There is an additional charge of \$.10 per square foot where special services are provided, such as high intensity lighting, power cost, etc.

## Paving Rates

Paving rates are in addition to land rental.

Type of Paving	Actual 2016-2017 Rate	Proposed 2017-2018 Rate
Standard (Vehicular) Existing	\$.40 per sq.ft.	\$.45 per sq.ft.
Heavy Duty (Aircraft) Existing	\$.85 per sq.ft.	\$.90 per sq.ft.

## Building Rental Rates Miami International Airport Effective as of October 2017

The following are the estimated annual square foot building rates for the period October 2017 to September 2018. **These rates exclude land, water, sewer, electric, and common area janitorial except where footnoted.**

Building #. (Old bldg. #)	Building Description	Actual Rate 2016-2017	Proposed Rate 2017-2018
49	Offices (A/C) Shop (A/C)	\$6.00 \$6.00	\$6.00 \$6.00
700	Cargo (Non A/C) Offices (A/C) 2nd Floor Offices (A/C) 1st Floor 3 <sup>rd</sup> Floor Storage (storage only)*	\$10.00 (11) \$11.50 (11) \$15.00 (11) \$10.00	\$10.00 (11) \$11.50 (11) \$15.00 (11) \$10.00
701	Cargo (Non A/C) Offices (A/C) 2nd Floor Offices (A/C) 1st Floor 3rd Floor Storage (storage only)*	\$10.00 (11) \$11.50 (11) \$15.00 (11) \$10.00	\$10.00 (11) \$11.50 (11) \$15.00 (11) \$10.00
702	Cargo (Non A/C) Offices (A/C) 2nd Floor Offices (A/C) 1st Floor 3rd Floor Storage (storage only)*	\$10.00 (11) \$11.50 (11) \$15.00 (11) \$10.00	\$10.00 (11) \$11.50 (11) \$15.00 (11) \$10.00
703 (2120)	Engine Test Cell Bldg.—Storage Test Cells (in compliance with 40-year recertification) • Reciprocating-Dynamometer Cells • Large Jet Engine Cells	\$5.25 (12)  \$11,000 per month (8)(13) \$13,000 per month (8)(13)	\$5.25 (12)  \$11,000 per month (8)(13) \$13,000 per month (8)(13)
703A	Test Cell	\$13,000 per month	\$13,000 per month
704 (2121)	Warehouse (Non A/C)/Cargo (Non A/C) Offices (A/C)/Shop(A/C)/Storage(A/C)	\$5.75 (12) \$6.25 (12)	\$5.75 (12) \$6.25 (12)
706	Cargo (Non A/C) Offices (A/C) 3rd Floor Storage (storage only) <sup>2</sup>	\$16.00 (11) \$15.00 (11) \$10.00	\$16.50 (11) \$15.00 (11) \$10.00
707	Cargo (Non A/C) Offices (A/C) 3rd Floor Storage (storage only) <sup>2</sup>	\$16.00 (11) \$15.00 (11) \$10.00	\$16.50 (11) \$15.00 (11) \$10.00
708	Cargo (Non A/C) Offices (A/C) 3rd Floor Storage (storage only) <sup>2</sup>	\$16.00 (11) \$15.00 (11) \$10.00	\$16.50 (11) \$15.00 (11) \$10.00

*\* No air conditioning is provided and only electric for minimal lighting.*

**Building Rental Rates Miami International Airport**  
**Effective as of October 2017 (continued)**

Building #. (Old bldg. #)	Building Description	Actual Rate 2016-2017	Proposed Rate 2017-2018
709	LanChile (Airis)	Tenant constructed building	
710	LanChile (Airis)	Tenant constructed building	
711	Arrow Cargo (Aeroterm)	Tenant constructed building	
712	Arrow Cargo (AMB Codina)	Tenant constructed building	
714	Cargo (Non A/C) Offices (A/C)	\$12.75 \$13.25	\$12.75 \$13.25
716A	Cargo (Non A/C) Offices (A/C) 2nd Floor Offices (A/C) 1st Floor	\$13.00 (11)(15) \$13.60 (11)(15) \$15.00 (11)	\$13.00 (11)(15) \$13.60 (11)(15) \$15.00 (11)
716B-J	Cargo (Non A/C) Offices (A/C) 2nd Floor Offices (A/C) 1st Floor	\$12.00 (11)(15) \$12.60 (11)(15) \$15.00 (11)	\$12.00 (11)(15) \$12.60 (11)(15) \$15.00 (11)
719 (2122)	Governmental Service Bldg. - CCC	\$19.50 (3)	\$19.50 (3)
741 (2204)	Decompression chamber	\$45,000 per year	\$52,000 per year
805	Cargo (Non A/C) Offices (A/C)	\$12.00 \$12.00	\$12.00 \$12.00
807	UPS (Cargo)	Tenant constructed building	
812	PPQ Building	MDAD/tenant constructed building	
815	USDA Veterinary Services	MDAD/tenant constructed building	
820 (1011)	Warehouse (Non A/C) Offices (A/C)	\$9.00 \$10.00	\$9.00 \$10.00
831	Office/Warehouse (FedEx)	Tenant constructed building	
836 (1054)	GSE Office/shop (AC)	\$13.50	\$13.50
839	Hangar (Signature Flight Center) Offices (A/C)	\$12.00 \$16.00	\$12.00 \$16.00
840	Signature Flight Support (Terminal)	\$20.00	\$20.00
844 (101)	Hangar - Storage (Non A/C) Offices (A/C) Storage (A/C)	\$9.25 (1) \$11.75 \$6.75	\$9.25 (1) \$11.75 \$6.75
845 (100)	Offices (A/C) Warehouse (Non-A/C) Warehouse (A/C) Warehouse Office (A/C) Simulator (A/C) Atrium Space—1st Floor (A/C) Atrium Space—Above 1st Floor (A/C)	\$15.00 (3) \$10.60 (3) \$12.00 (3) \$12.00 (3) \$12.79 \$19.00 (3) \$19.00 (3)	\$16.00 (3) \$10.60 (3) \$12.00 (3) \$12.00 (3) \$12.79 \$19.00 (3) \$19.00 (3)
850	AAR ACS (Maintenance Hangar)	Tenant constructed building	
855 (53)	Storage (A/C)	\$5.75	\$5.75
856 (52)	Storage (A/C)	\$5.50	\$5.50
857 (55)	Wash Rack & Drum Storage	\$4.50	\$6.00

\* Rent includes land, water, sewer and common area janitorial.

**Building Rental Rates Miami International Airport**  
**Effective as of October 2017 (continued)**

<b>Building #. (Old bldg. #)</b>	<b>Building Description</b>	<b>Actual Rate 2016-2017</b>	<b>Proposed Rate 2017-2018</b>
861-862 (60)	Aircraft—Hangars (#6 and #7) Shops (A/C) Storage (A/C) Offices (A/C)	\$10.00 (1) (12) \$5.25 (12) \$5.25 (12) \$6.50 (12)	\$10.00 (1) (12) \$5.25 (12) \$5.25 (12) \$6.50 (12)
863 (60-A)	Engine Overhaul and Service Storage 2nd Floor Offices (A/C) 1 <sup>st</sup> Floor Offices (A/C)	\$5.50 \$4.00 \$10.00 \$8.00	\$5.50 \$4.00 (22) \$10.00 \$8.00
871 (48)	Hangar (Non A/C) Office (A/C) Shop (A/C)	\$9.00 (1) \$5.50 \$4.25	\$9.00 (1) \$5.50 \$4.25 (22)
875 (43)	Flight Academy Office (A/C) Pan Am Office (A/C) Individual tenants Simulator Bays (A/C)	\$10.50 (19) \$15.00 (3) \$9.00 <sup>1</sup>	\$10.50 (19) \$15.00 (3) \$9.00 <sup>1</sup>
890 (25)	Hangar (Non A/C) Office Space (A/C) Storage (A/C) Shops (A/C)	Tenant owned building	
891 (24)	First Floor: Maintenance-Shops (A/C) Second Floor: Shops (A/C) Third Floor: Shops (A/C) Fourth Floor: Storage (Non A/C)	Tenant owned building	
896 (22)	Hangar—Maintenance (Non A/C) Office Space (A/C) Shops—Maintenance (A/C) Third Floor: Storage Composite Shop Paint Booth	\$10.00 (1) \$7.75 \$5.75 \$4.75 \$10.00 \$10.00	\$10.00 (1) \$7.75 \$5.75 \$3.00 \$10.00 \$10.00

<sup>1</sup> This rate excludes electric

***Building Rental Rates Miami International Airport  
Effective as of October 2017 (continued)***

<b>Building #. (Old bldg. #)</b>	<b>Building Description</b>	<b>Actual Rate 2016-2017</b>	<b>Proposed Rate 2017-2018</b>
909	Flight Training Facility (Airbus)	Tenant Constructed Building	
916	Cargo Warehouse (Development)	Tenant Constructed Building	
919 (5A)	Office - Entire Building (A/C) Office - Per Floor or less (A/C) Office - Second Floor (Full Service) Storage Loading Dock	\$10.50 \$13.00 \$18.00 <sup>2</sup> \$6.00 (22) \$1.75	\$10.50 \$13.00 \$18.00 \$6.00 (22) \$1.75
2082	Warehouse (El Dorado) Offices (A/C)	\$2.50 \$2.50	\$2.50 \$2.50
3010	Cabstand Cafe (A/C)	\$30.00 (5)	\$30.00 (5)
3030	Offices	\$10.00 (12)	\$10.00 (12)
3030A	Offices (A/C)—Wing of 3030	\$8.50	\$8.50
3032	Cafeteria (Non A/C) Cafeteria (A/C)	\$4.75 \$6.50	\$4.75 \$6.50
3033	Police Station (A/C)	\$10.00	\$10.00
3037	Maintenance-Garage (Non A/C) Offices (A/C)	\$6.00 \$6.50	\$6.00 \$6.50
3038	Building Services—Maintenance/Office (A/C)	\$6.50	\$6.50
3040	Maintenance Shops (Non A/C) and Offices (A/C)	\$6.60 (19)	\$6.60 (19)
3034	Triturator	\$36,000 (10)	\$36,000 (10)

<sup>2</sup> This rate excludes interior janitorial service

\* **The 2006 rate included land, whereas the rates from 2010 and after are for the building only and the land rate and paving rate is charged separately.**

**Building Rental Rates Miami International Airport**  
*As of October 2017 (continued)*

Building #. (Old bldg. #)	Building Description	Actual Rate 2016-2017	Proposed Rate 2017-2018
3046	Offices (A/C) Shop (A/C)	\$10.00 \$6.25	\$10.00 \$6.25 (22)
3047	Offices (A/C)	\$10.00	\$10.00
3048	Offices (A/C)	\$10.00	\$10.00
3049	Maintenance Garage (Non A/C)	\$7.00	\$7.00
3050	Administration Building (Multiple Tenancy)	\$14.25 (18)	\$14.25 (18)
3074	In-flight Caterers: Kitchen (Non A/C) Kitchen (A/C)	\$8.50 (22)	\$8.50 (22)
3077	Triturator	\$36,000/yr. (10)	\$36,000/yr. (10)
3078	Fuel Building (A/C) Offices (A/C)	\$10.00 \$10.25	\$10.00 \$10.25
3089	Parking Garage	\$55.00/mo. (4)	\$55.00/mo. (4)
3091	Maintenance/Offices (A/C)	\$7.75	\$7.75
3094	Parking Garage	\$55.00/mo.(4)	\$55.00/mo.(4)
3095-A	*American Airlines Hangar Hangar Area (Non A/C) – 1 <sup>st</sup> Floor Office – 1 <sup>st</sup> and 2 <sup>nd</sup> Floors (A/C) Shops, Storage 1st and 2 <sup>nd</sup> Floors	By agreement  \$11.75 \$9.00 (22) \$8.00 (22)	By agreement  \$11.75 \$9.00 (22) \$8.00 (22)
3095-B	Offices (as renovated): Offices—Entire Building (A/C) Offices—Per Floor (A/C) Offices—Penthouse (A/C)	\$11.00 \$17.00 (3) \$20.00 (3)	\$11.00 \$17.00 (3) \$20.00 (3)
3100	Maintenance Garage (Non A/C)	\$7.00	\$7.00
3101	Maintenance Garage—Storage (Non A/C)	\$6.00	\$6.00
3110	Offices—Security	\$21.00	\$21.00
3150	Offices (A/C)	\$11.50	\$11.50
3151	Maintenance—Shop (Non A/C) Offices (A/C)	\$6.00 \$11.00	\$6.00 \$11.00
3152	Service Station (Non A/C)	\$5.75	\$5.75
3153	Car Wash Building	\$5.75	\$5.75
3241	RCC Office (A/C) RCC Storage (A/C)	\$26.00 (20) \$15.00 (20)	\$26.00 (20) \$15.00 (20)

\* *This rental rate is set by agreement with American Airlines and is adjusted annually by CPI*

***Building Rental Rates Miami International Airport  
Effective as of October 2017 (continued)***

<b>Building #. (Old bldg. #)</b>	<b>Building Description</b>	<b>Actual Rate 2016-2017</b>	<b>Proposed Rate 2017-2018</b>
4001	Traffic Control Center	\$13.00	\$13.00
4002	Public Works Office	\$12.00	\$12.00
4003	Corrections Office (A/C)	\$7.50	\$7.50
4003A	Offices (A/C) Storage (Non A/C)	\$7.00 \$6.00	\$7.00 \$6.00
4004	Sign Shop (Non A/C)	\$6.00	\$6.00
MIC	Platform - Unfinished space (21)	\$30.00	\$30.00

**Loading Dock**

Loading dock area has an additional rate of \$1.75 per square foot.

**Utility Rates**

The rental rates herein exclude utilities (water, sewer and electric) except as footnoted. Utilities shall be applied as a separate charge.

**Trailer Parking & Modular Units**

Trailer parking has a rate of \$250.00 per space per month for single wide trailers, \$500.00 per space per month for double wide trailers and \$600.00 per space per month for a triple wide. Modular units are authorized for temporary use by tenants for office or storage purposes, preceding and/or during construction, and have the rates of \$250.00 per space per month for single wide trailers, \$500.00 per space per month for double wide trailers and \$650.00 per space per month for a triple wide.

**Tractor Trailer Parking**

Tractor trailers less than 75 feet in length, inclusive of the cab, have a rate of \$525.00 per month.

**Automobile Parking**

Automobile parking (grade level & non-garage space) has a charge of \$55.00 per space per month. Limousines that occupy no more than a standard parking space/area will be charged \$55.00 per month. Larger limousines have a rate of \$100.00 per month. Tour buses and buses in excess of eight (8) feet wide and 18 feet long have a rate of \$200.00 per month.

**Antennae Installations**

Antennae installed for the provision of service to another and/or from which data is collected for sale to users and others shall have a fee of \$2,500.00 annually per antenna.



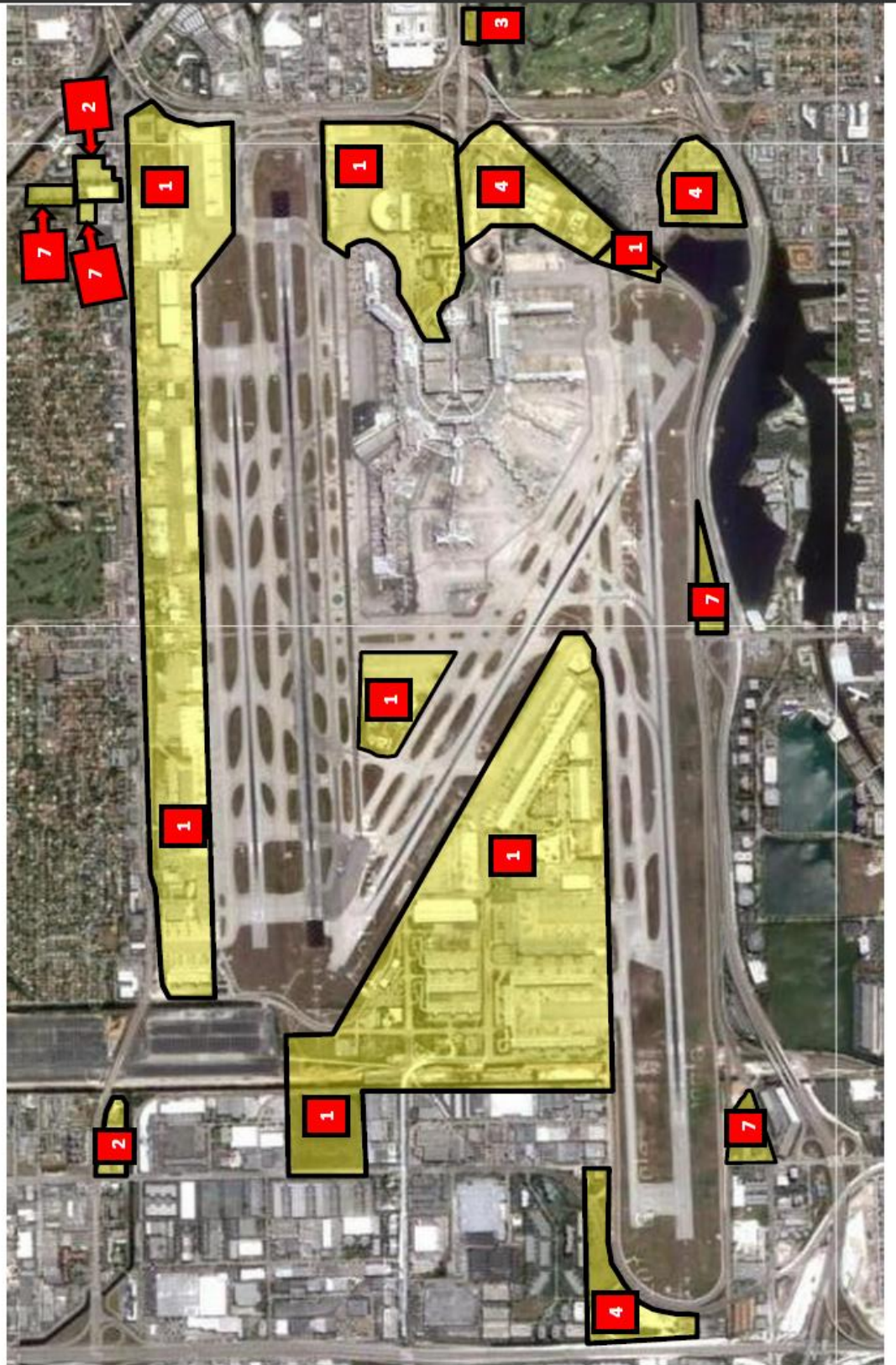
## **Full Service**

This includes land rent, janitorial and utilities.

## **Footnotes**

- 1) Non-airline tenants shall pay the said per square foot rate or 3% of all gross revenues produced from providing aircraft maintenance services to others, whichever is greater.  
Airline tenants shall pay 3% of all gross revenues produced from providing aircraft maintenance services to others in addition to the said per square foot rental rates.
- 2) Rent includes land, electricity, and common area janitorial.
- 3) Rent includes land, electricity, water, sewer and common area janitorial.
- 4) Rent per position per month.
- 5) Tenant pays minimum guarantee.
- 6) The rental rate reflects the "As Is" condition of the building. The building has limited fire and electrical systems. (Not used in 2005.)
- 7) Rent includes water, sewer, electricity, and common area janitorial. (Not used in 2005.)
- 8) Rent includes land.
- 9) The rent includes water and sewer. (Not used in 2005.)
- 10) Rates based on approved actual audited construction costs.
- 11) Rent includes common area janitorial, excludes land.
- 12) Additional rent may be applicable to recover costs of 40-year recertification and costs of repairs to comply with life safety codes.
- 13) Rate includes amortization of 40-year recertification and costs of repairs to comply with life safety codes.
- 14) Rate based on competitive bidding.
- 15) Appraised rate includes a charge of \$.10 per square foot as a trash removal fee.
- 16) No longer applicable (*was formerly "Rental based on 20-year lease. Adjusted annually on January 1st"*)
- 17) No longer applicable (*was formerly "Hangar is currently unusable and can only be used as aircraft parking until roof repairs are completed."*)
- 18) Includes land rent and janitorial.
- 19) Includes common area janitorial.
- 20) Includes land rent and janitorial. Utilities are paid by rental car agencies in MIC.
- 21) Tenant pays for all tenant improvements and for utilities.
- 22) If A/C space the tenant pays applicable electric and is responsible for A/C repair and replacement

LAND ZONE MAP – ZONES 1, 2, 3, 4 & 7



**FUEL FARM TAB**

**FUEL FLOWAGE FEES  
MIAMI INTERNATIONAL AIRPORT  
AS OF OCTOBER 2017**

		<b>STORAGE</b>	<b>TRUCK</b>	<b>HYDRANT</b>
Direct Expenses		\$3,020,779	\$656,173	\$801,492
Indirect Expenses		739,588	0	35,964
Total Operating Expenses		\$3,760,367	\$656,173	\$837,456
Debt Service		3,326,828	563,294	6,093,921
Reserve Maintenance Fund Deposit		--	--	--
Management Fee		486,115		
Less: County Credit				
<b>Total Requirement</b>	<b>[A]</b>	<b>\$7,573,310</b>	<b>\$1,219,467</b>	<b>\$6,931,377</b>
<b>Estimated Gallonage</b>	<b>[B]</b>	<b>899,484,066</b>	<b>270,295,440</b>	<b>629,188,626</b>
<b>Total Cost per Gallon</b>	<b>[C=A/B]</b>	<b>\$0.008420</b>	<b>\$0.004512</b>	<b>\$0.011016</b>
<b>Add Storage (a)</b>	<b>[D]</b>		<b>\$0.008420</b>	<b>\$0.008420</b>
<b>Fuel Flowage Fee</b>	<b>[C+D]</b>		<b>\$0.012932</b>	<b>\$0.019436</b>

(a) Storage costs are spread amongst the truck and hydrant users equally.

**Fuel Flowage Fee Calculation Explanation**

Because MDAD operates the fuel farm at MIA, it strives to recover the operating and capital costs related to the fuel farm directly from the fuel consumers through the fuel flowage fee. The operating costs are determined through the annual budget process by a fuel management company and reviewed by the Environmental Division. The cost is allocated amongst the following three areas: storage (represents the cost related to the above ground fuel storage tanks owned by MDAD), hydrant fueling (represents any costs related to providing fuel to air carriers through the hydrant system) and truck (represents any costs related to providing fuel to air carriers through fuel trucks rather than using the hydrant system). In addition, the costs of any assets acquired for the fuel farm are categorized by these three areas depending on how the asset is utilized. These assets are then included in the costs by amortizing them over their useful life using MDAD's current cost of capital. After aggregating these costs, a fuel flowage fee is calculated by dividing these costs by the estimated gallons to be purchased (either through truck or hydrant) during the fiscal year.

A separate fuel flowage fee is charged for general aviation users.

Opportunity Fee on fueling service into commercial aircraft does not apply.

**GENERAL AVIATION TAB**

**GENERAL AVIATION AIRPORT FEES AND CHARGES  
MIAMI INTERNATIONAL AIRPORT  
AS OF OCTOBER 2017**

**Operational Closure Fee**—a fee of **\$4,800.00 per day (or portion thereof), or \$200.00 per hour for government entities** shall be required for operational closure at the Training and Transition Airport (or part thereof) or General Aviation Airport (or part thereof) to cover costs incurred by safety officer and vehicle required by the Federal Aviation Administration.

**Aerial Advertising Fee**—a fee of **\$14.00** will be charged for aerial advertising (banner towing) at the General Aviation Airports. This fee will apply to the combination of banner pick-up and recovery, and will not exceed three (3) charges per day, per aircraft.

**Aircraft Parking at General Aviation Airports**— For M-1 aircraft, the same rates charged at Miami International Airport for 1 – 5 days. The M-1 daily base rate is currently **\$13.00 per day** and will apply for the entire parking period. For all other aircraft, the same rates charged at MIA but the rates shall increase over time as reflected on the attached aircraft parking rates schedule. Please reference the Aircraft Parking Rates in the Airside section of this book.

***SEE SCHEDULE AT THE END OF THE AIRSIDE SECTION FOR AIRCRAFT PARKING FEES WHICH ARE LISTED BY AIRCRAFT TYPE.***

**Conference Room Rental Fee (Miami Executive and Opa-Locka Airports)**—the rate for non-profit entities shall be **\$10.00 per use**; the rate for other than non-profit entities shall be **\$50.00 per use**; the use for all entities shall be limited to four (4) hours.

**Off-Road Vehicle Parking Fee at Training and Transition Airport**—the rate shall be **\$50.00 per vehicle, per fiscal year** (October 1 through September 30) **or fraction thereof**.

**Fuel flowage fee at the General Aviation Airports**—the rate shall be **\$0.08 per gallon**.

**Usage of Training and Transition Airport is \$28.00 per approach**.

**AOA (Aircraft Operating Area) Decal for General Aviation Airport Commercial Vehicles and Equipment** – the fee shall be **\$10.00 per decal**. AOA decals provide for the identification and regulation of airfield traffic. AOA decals also provide verification that vehicles and equipment are properly insured.

**AOA Decal for General Aviation Airport Privately Owned Vehicles and Equipment** – the fee shall be **\$5.00 per decal**. AOA decals provide for the identification and regulation of airfield traffic. AOA decals also provide verification that vehicles and equipment are properly insured.

**AOA Decal Replacement Fee for General Aviation Airport Vehicles and Equipment** – the fee shall be **\$10.00 per decal** and covers costs associated with research, cancellation and reissuance of each decal.

**AOA Decal Late Application Fee** – the fee shall be **\$10.00 per decal** and covers expedited processing times requiring additional manpower.

<b>Miami - Opa-Locka Executive Airport (OPF) 2018 Property Rental Summary</b>				
<b>LAND RENTAL</b>		<b>Rent/Sq. Ft./ Year</b>		
		Actual FY2016	Actual FY2017	Actual FY2018
Aeronautical Land Non-Aviation Land – appraise individually case-by-case as necessary		\$0.23	\$0.24	\$0.25
<b>PAVEMENT RENTAL</b>		<b>Rent/Sq. Ft./ Year</b>		
		Actual FY2016	Actual FY2017	Actual FY2018
Pavement		\$0.05	\$0.05	\$0.05
<b>Non-Aviation Land Lease Number/Tenant</b>		<b>Rent/Sq. Ft./ Year</b>		
		Actual FY2016	Actual FY2017	Actual FY2018
Lease No. O-216 Miami-Dade Dept. of Corrections		\$1.00	\$1.10	\$1.10
Lease No. O-1519 Miami-Dade Water & Sewer Dept.		\$0.80	\$0.90	\$0.90
Lease No. O-8088 Schaecter – clear zone (2)		\$0.488	\$0.503	\$0.518
Lease No. O-7889 Miami Lakes Office Condo - clearzone		\$0.60	\$0.60	\$0.60
<b>BUILDING RENTAL (1) Aviation Tenants</b>		<b>Rent/Sq. Ft./ Year</b>		
		Actual FY2016	Actual FY2017	Actual FY2018
Building	40E (3)	\$7.95	\$7.95	\$7.95
Building	40C (2)	\$7.65	\$7.65	\$7.65
Building	40W (1)	\$7.78	\$7.78	\$7.78
Building	41E (3)	\$7.65	\$7.65	\$7.65
Building	41C (2)	\$7.65	\$7.65	\$7.65
Building	41W (1)	\$7.65	\$7.65	\$7.65
Building	45	\$6.04	\$6.38	\$6.66
Building	46	\$10.36	\$11.20	\$12.28
Building	47	\$6.18	\$6.52	\$6.75
Building	102	\$0.00	\$0.00	\$0.00
Building	107 Office	\$19.00	\$19.00	\$19.00
Building	107 Dorm	\$19.00	\$19.00	\$20.00
Building	114	\$4.49	\$4.49	\$4.49
Note 1: Annual rent/SF excluding land or pavement Note 2: Rent subject to annual 3% increase Last Revised 6/19/2017 OPF.FY18				

<b>Miami Executive Airport (TMB) 2018 Property Rental Summary</b>				
<b>LAND RENTAL</b>		<b>Rent/Sq. Ft./ Year</b>		
		Actual FY2016	Actual FY2017	Actual FY2018
Aeronautical Land Non-Aviation Land – appraise individually case-by-case as necessary		\$0.20	\$0.21	\$0.22
<b>PAVEMENT RENTAL</b>		<b>Rent/Sq. Ft./ Year</b>		
		Actual FY2016	Actual FY2017	Actual FY2018
Pavement		\$0.05	\$0.05	\$0.05
<b>FARM LAND</b>		<b>Rent/Acre/ Year</b>		
		Actual FY2016	Actual FY2017	Actual FY2018
Farm Land – minimum bid		\$450	\$500	\$500
<b>BUILDING RENTAL</b>  <b>Aviation Tenants</b>		<b>Rent/Sq. Ft./ Year</b>		
		Actual FY2016	Actual FY2017	Actual FY2018
Building	102	\$3.33	\$3.33	\$3.33
Building	109	\$3.56	\$3.56	\$3.56
	109A	\$2.84	\$2.84	\$2.84
	109B	\$2.84	\$2.84	\$2.84
Building	114	\$3.28	\$3.28	\$3.28
Building	121	\$4.85	\$5.19	\$5.19
Building	123	\$4.79	\$5.13	\$5.13
Building	221	\$3.64	\$3.64	\$3.64
Building	222	\$2.04	\$2.27	\$2.27
Building	247	\$5.33	\$5.67	\$5.67
Building	504	\$4.93	\$4.93	\$4.93
Building	225	\$3.24	\$3.38	\$3.38
Building	226	\$1.24	\$1.24	\$1.24
Building	227	\$3.73	\$3.73	\$3.73
Building	228	\$5.70	\$6.04	\$6.04
Building	229	\$5.41	\$5.75	\$5.75
Building	501	\$7.83	\$7.83	\$7.83
Building	507	\$16.00	\$16.00	\$16.00
Last Revised TMB.FY18		6/19/2017		



<b>Homestead General Aviation Airport (X51) 2018 Property Rental Summary</b>				
<b>LAND RENTAL</b>		<b>Rent/Sq. Ft./ Year</b>		
		Actual FY2016	Actual FY2017	Actual FY2018
Aeronautical Land		\$0.07	\$0.07	\$0.07
<b>PAVEMENT RENTAL</b>		<b>Rent/Sq. Ft./ Year</b>		
		Actual FY2016	Actual FY2017	Actual FY2018
Pavement		\$0.05	\$0.05	\$0.05
<b>FARM LAND</b>		<b>Rent/Acre/ Year</b>		
		Actual FY2016	Actual FY2017	Actual FY2018
		\$450	\$450	\$450
<b>BUILDING RENTAL (1)</b>		<b>Rent/Sq. Ft./ Year</b>		
		Actual FY2016	Actual FY2017	Actual FY2018
<b>Aviation Tenants</b>				
Building	2	\$3.82	\$3.82	\$3.82
	3	\$2.65	\$2.65	\$2.65
Building	5	\$3.53	\$3.53	\$3.53
Building	10	\$3.82	\$3.82	\$3.82
Building	14	\$2.65	\$2.65	\$2.65
Note 1: Annual rent/SF excluding land or pavement Last Revised 6/19/2017 X51.FY18				

**TELECOMMUNICATIONS TAB**

**TELECOMMUNICATION FEES  
MIAMI INTERNATIONAL AIRPORT  
AS OF OCTOBER 2017**

**Wireless Services Providers**—the annual rates shall be as follows:

- \$250,000.00 per cellular telephone (cell site)

**Cable Television (CATV) Recovery Fee**

- \$60.00 per month per location at private offices and break-rooms
- \$215.00 per month per location at bars, restaurants and clubs

**Coaxial Cable Recovery Fee**

- Recovery Fee: \$35.00 per month
- Installation: \$150.00 per location
- Additional work: \$75.00 per hour plus material at cost plus 25%
- Equipment rental: \$20.00 per month, per television
- Unauthorized Service: \$1,000.00 per location per month plus monthly fee

**Wireless Data Port with Internet Access Fee** - \$47.50 per device, per month. (airport tenants, airlines and concessionaires)

**Wireless Network Access Fee for Multiple Users and Proprietary Tenants** - \$600.00 per month, to provide MDAD internet services and Wifi to airline lounges and other proprietary space.

**Offsite FIDS Rate**

**Network Port Costs (Monthly)**

- \$60.00 per PC connection. Each PC can drive two monitors.

**Equipment Rental Costs (Monthly)**

- \$50.60 for 42" LCD Display
- \$4.22 for monitor mounting and security locks
- \$13.49 per PC for Web FIDS
- \$3.37 per Video Extender to drive monitor from PC
- \$7.00 for Dual Video Output Card

**Telecommunications Fees**  
**Miami International Airport**  
**Voice and Data Network - STS Prices**  
**As of October 2017**

Description	Mo. Unit Rental	Unit Install
<b>1) Switch Access</b>		
Meridian One Port	\$15.00	\$66.65
Advanced Features (Conference Calling, Speed Calling, Etc.)	Included w/Phone	Waived
<b>2) Network Access - Public</b>		
Single Line Access	\$22.50	\$66.65
Network Access	\$61.25	\$66.65
<b>3) System - Terminal Equipment</b>		
M3902 Basic Rel. 3 Digital Phone - 1 Line	\$7.45	\$133.30
M3903 Enhanced Rel. 3 Digital Phone - 3 Line	\$17.65	\$133.30
M3904 Professional Rel. 3 Phone - 5 Line	\$22.43	\$133.30
M3904 Add On Module	\$7.48	\$66.65
M3905 Call Center Telephone Rel 3	\$24.21	\$133.30
Analog Set	\$4.21	\$133.30
Companion Wireless Telephone	\$19.43	\$133.30
Conference Phone	\$34.66	\$133.30
Loud Bell	\$7.90	Per Quote
Handsfree Headset	\$13.36	\$133.30
<b>4) System - Other</b>		
Voice Mail Box	\$6.25	\$33.33
Authorization Code	\$1.25	\$33.33
Voice Cable (Fax, Modem, or Clock Programming)	\$3.28	\$66.65
Level 5 Data Cable	\$3.28	Per Quote
Ethernet Port	\$75.00	\$133.30
Internet Access 6MB - 1 Public Static IP Address	\$106.25	\$133.30
Internet Access 12MB - 1 Public Static IP Address	\$212.50	\$266.60
Additional Static IP Address	\$12.50	\$66.65
Wireless Data Ports with Internet Access	\$47.50	N/A
Engineering and Configuration of WiFi Ports	N/A	\$533.20
Wireless Network Access for Multiple Users	\$600.00	\$1,066.40
One Strand foot of Fiber (MM or SM) (')	\$0.019	Per Quote
SC Connector in Fiber Patch Panel	\$4.20	\$33.33
Fiber Termination	N/A	\$133.30
Copper Cable per pair foot (')	\$0.006	Per Quote
Black filled Copper Cables per pair foot (')	\$0.006	Per Quote
25 pair Copper Cable per pair foot (')	\$0.038	Per Quote

**Notes:**

1. All customers require a quote and MDAD contract for installation and monthly service.
2. Internet Access is a service provided using the MDAD LAN. An Ethernet Port and CAT 5 cable are required for the service.
3. Cable and conduit installation quoted if required for service.

**MISCELLANEOUS TAB**

## MISCELLANEOUS FEES AND CHARGES MIAMI INTERNATIONAL AIRPORT AS OF OCTOBER 2017

### Opportunity Fee

**Opportunity Fee for Third-Party Vendors**—an opportunity fee will be imposed on third-party vendors contracted to provide services at MIA. This fee will be 7% of gross revenues derived from services provided at MIA.

Opportunity fees for aircraft Maintenance Repair Overhaul (MRO) operators will be 3% (three percent) of gross revenues. Opportunity fees for vending machine operators at all Miami-Dade County Airports will be 30% (thirty percent) of gross revenues. Opportunity fees for fueling services into commercial aircraft at Miami International Airport will not apply. All other third-party vendors will be maintained at a 7% charge on all gross revenues. Opportunity fees on vending machines are being revised to reflect rates consistent with MIA concessionaire vending machines.

### Penalty Fee for Employing Unpermitted Service Vendors

Penalty fees will be assessed to Aviation Department tenants who employ service vendors which operate without an Aviation Department permit.

- A penalty fee of \$500.00 will be assessed for the first occurrence, to be cured within 90 days.
- Incremental assessments of \$500.00 for each 30 days thereafter that the condition is not cured will be imposed.

Cure is defined as the service provider initiating and completing the permit process and paying all fees due from the period in which there was no permit. If the permit is being processed and the service provider is cooperating in good faith, no further penalties will be assessed after the first 90 days.

### Miscellaneous Air Carrier Fees

- **Disruptive Passenger Fee**—airlines will be charged for actual costs incurred by the Department for disruptive passengers resulting from delayed or canceled flights.
- **GSE (Ground Service Equipment) Impoundment Fee**—a GSE impoundment fee will be imposed at a rate of \$10.00 per day and per GSE equipment for the first 15 days. From 16 to 30 days, the impoundment fee will increase to \$20.00 per day and per impoundment. At 31+ days, the impound fee will increase to \$40.00 per day and per impoundment until the impounded equipment has been released.
- **Aircraft Handling Chock Fee at the General Aviation Center or Remote Locations** – The fee shall be \$100.00 per aircraft.

## MISCELLANEOUS FEES AND CHARGES (continued)

### Employee (MDAD Tenant) ID Badge Fees

- **Employee Identification Badge Fee**—the fee shall be **\$20.00** for each ID badge Issuance and Renewal.
- **Lost or Unaccounted Employee ID Badge Fee**—the fee shall be **\$75.00 for the 1st replacement** and **\$100.00 for the 2nd replacement**.
- **Failure to NOTIFY and RETURN a Terminated Employee ID Badge Fee** – the fee shall be **\$100.00 per badge**.
- **TSA 5% Rule Violation Fee** – the fee shall be **\$125.00 per badge** and will be assessed when unreported lost, unaccounted for, or unreturned badges exceed 5% of total badges issued. This fee will not apply to badges already charged under the “Lost or Unaccounted for” rule.
- **Fingerprinting Fee**—the fee shall be **\$38.00 per individual** fingerprinted. Of this amount, \$29.00 is forwarded to TSA while MDAD retains \$9.00 for administrative fee.

### Airside Vehicle, Training and Decal/Permit Replacement Recommended Fees

- **Aircraft Operating Area (AOA) Decals** – the fee shall be **\$20.00 per vehicle**.
- **AOA Decals (Lost or Unaccounted)** – the fee shall be **\$75.00 for the 1<sup>st</sup> replacement** and **\$100.00 for the 2<sup>nd</sup> replacement**.
- **AOA Driver Training** – the fee shall be **\$15.00 per person**.
- **AOA Movement Area Training** – the fee shall be **\$15.00 per person**.
- **Loading Bridge Training** – the fee shall be **\$15.00 per person**.
- **AOA Driver Training, Movement Area, Loading Bridge Training Permit Replacement Fee** – the fee shall be **\$15.00 per permit**.
- **AOA Decal Late Application Fee** – the fee shall be **\$10.00 per decal** and covers expedited processing time requiring additional manpower.

### Into-Plane Fueling Recommended Fees

- **Non-commercial Aircraft Fueling** - remains at **\$0.08 per gallon** (effective 10/1/02).

### Airline VIP Clubs

- **Opportunity Fee**—the Lessee shall pay 35% of the Department’s basic VIP Club Fee, (which is currently \$35.20) as may be adjusted from time-to-time, for each non-member passenger, as defined in the VIP Club Agreement, Article 2.01 (Use of Premises) that uses its club facilities. Lessee’s Opportunity Fee charge, (35% of \$35.20) is \$12.32 for each non-member passenger using its club facilities.
- **Concession Fee**—the Lessee shall pay eighteen (18%) percent of the monthly Gross Revenue generated from liquor sales and ten (10%) percent of the monthly Gross Revenues generated from the sale of all other amenities granted the Lessee.

## **MISCELLANEOUS FEES AND CHARGES (continued)**

### **Airspace Evaluation<sup>1</sup>**

The fee shall be \$1,000.00 per each Airspace Evaluation submittal to recover costs associated with the technical review of proposed permanent structures that may be impacted by airport height zoning and the written comments prepared by staff. Staff may provide a range of maximum allowable heights to assist a developer in the planning process. This airspace evaluation is cursory in nature and should not serve or be construed to be an MDAD-issued Airspace/Land Use Letter of Determination.

### **Preliminary Airspace/Land Use Letter of Determination**

The fee shall be \$1,700.00 per analyzed “building” structure. This MDAD issued determination is for proposed use and/or placement of a permanent structure on a parcel of land impacted by airport zoning. This letter is required for all permanent structures reaching or exceeding 200 feet Above Ground Level and requires specific plan submittal (both site and architectural elevation plans). An exception would be a series of poles or trees (or similar structure) in which case, the first would be \$1,700.00 and there would be a \$45.00 fee for each additional coordinate associated with the project (which may be waived at MDAD’s discretion).

### **Final Airspace/Land Use Letter of Determination**

The fee shall be \$1,700.00 per analyzed “building” structure. Once site and architectural elevation plans are finalized and the requestor has received the FAA determinations for the project, the requestor must obtain a Final Airspace/Land Use Letter of Determination from MDAD. This letter references the FAA determinations. No fee assessed if the proponent has previously paid a fee for the Preliminary Airspace/Land Use Letter of Determination which was issued and has not expired and the plans/FAA Study Numbers remain the same.

### **Letter of Determination Fee (Land Use Zoning Analysis)<sup>1</sup>**

The fee shall be \$700.00 per each Land Use Zoning Analysis Request. The Aviation Department has been providing a free-of-cost service for the review, coordination and determination of land use compatibility impacts as mandated by the Florida State Statutes, Chapter 333 since 1993. Upon final review and analysis, the Aviation Department issues a “Letter of Determination” to the respective requestors. This review includes the assurance that proposed developments comply with Miami-Dade County’s Airport Zoning requirements.



**MISCELLANEOUS FEES AND CHARGES (continued)**

**MDAD Technical Reviews and Written Comments<sup>1</sup>**

Fees for written comments (to include comments for conceptual development plans) were implemented to recover costs associated with the technical review of proposed land-uses and structures and the issuance of written comments where airspace/land use and land use Letter of Determination (LOD) criteria does not otherwise apply. This fee also applies to conceptual plans in which case MDAD’s comments are requested.

Fees for Development Impact Committee (DIC) or Equivalent Large-Scale Zoning Hearing Application were implemented to recover costs associated with MDAD Planning Division’s review and written comments for the County’s Developmental Impact Committee (DIC) zoning hearing applications or any other type of large scale applications where Airspace/Land-Use and Land-Use Letter of Determination (LOD) criteria does not otherwise apply. Fee will be waived if proponent pays for LOD. If the DIC application is conceptual during the review time and when department comments are due, MDAD will charge the \$360.00 even if an Airspace/Land-Use LOD is required in the future.

Fees were implemented to recover costs associated with requests for new MDAD-issued Airspace/Land-Use or Land-Use Letter of Determination (LOD) which provide a time extension for an existing MDAD-issued LOD nearing expiration or already expired. This new LOD is only for an extension of time. All referenced data including, but not limited to, the land use, structure elevation, site plans, address or impacted property folio numbers as well as the actual approval must be identical to the data provided in the previously approved MDAD-issued LOD.

<sup>1</sup> The Miami-Dade Aviation Department (MDAD) may waive any fee provided for herein for applicants or users that are federal, state, or local governmental or military units, or other applicants or users under circumstances determined by MDAD to justify a waiver or reduction of the fee.

- Cell towers and other structures under 200 feet above mean sea level – the fee shall be **\$360.00**
- Request for written comments – the fee shall be **\$360.00**
- Request for written comments (revised plans) – the fee shall be **\$90.00**
- Development Impact Committee or Equivalent Large-Scale Zoning Hearing Application – the fee shall be **\$360.00**
- Permissible Crane (or Equipment) Height Determination – the fee shall be **\$360.00**
- Permissible Crane (or Equipment) Height Determination Extension Fee – the fee shall be **\$90.00**
- Permissible Crane (or Equipment) Height Determination Additional Coordinates – the fee shall be **\$45.00** (per set)
- Request for New Letter of Determination Due to Expiration – the fee shall be **\$360.00**

**Passenger Facility Charge (PFC)** – In accordance with 14 CFR Part 158 of the Federal Aviation Regulations, MDAD (Miami-Dade Aviation Department) has been authorized by the FAA to require any commercial air carrier operating at Miami International Airport to collect **\$4.50 per enplaned passenger** on its behalf. Such air carrier is allowed to keep \$0.11 per PFC of the amount remitted to MDAD.

## Other Fees

- **Auditorium Use Fee (Miami International Airport)**—the fee shall be \$700.00 per use per day for the whole auditorium. The auditorium can be rented as three separate halls; the fee shall be room #1 \$200.00, room #2 \$250.00 and room #3 \$250.00. It may also be rented incrementally in 4 hour blocks, the fee shall be room #1 \$100.00, room #2 \$125.00 and room #3 \$125.00.
- **Conference Room Use Fee (Miami International Airport – Non Terminal)** – the fee shall be \$150.00 for 4 hours to cover administration, preparation, utility and janitorial costs associated with converting vacant non-leased rooms into usable space for meetings and other specialized functions for airlines and other airport tenants.
- **Consular Lounge Annual Membership Fee** – the fee shall be \$500.00 per entity to cover costs associated with providing needed protocol services to members of the Consular Corps of Miami and other high-level dignitaries.
- **Consular Lounge Rental Fee for Non-Member Organizations** – the fee shall be \$500.00 for 1 – 4 hours of use per day and \$900.00 for 8 consecutive hours (full day) during a 24-hour period for rental of the MDAD Consular Lounge to non-member organizations (those organizations that are not part of the Consular Corps of Miami).
- **Interfaith Chapel Fee** – the fee shall be \$100.00 per scheduled or secular service.
- **Digital Media Sales Fee (Fixed)** – the fee shall be variable between \$50.00 and \$30,000.00 per month depending on advertising type, size and other factors and will apply to all advertisement space, banners, screen pop-ups and the like appearing on MDAD’s Digital Media services.
- **Digital Media Sales Fee (Per 1,000 impressions)** – the fee shall be variable between \$5.00 and \$50.00 per 1,000 impressions depending on advertising type, size, duration and other factors and will apply to all advertisement space, banners, screen pop-ups and the like appearing on MDAD’s Digital Media services.
- **Electric Cart Registration Fee** – the fee shall be \$25.00 per cart, per year.
- **Electric Cart Lost Registration Fee** – the fee shall be \$75.00 per cart.
- **Electric Cart Late Registration Fee** – the fee shall be \$10.00 per cart.
- **Late Revenue Reporting Fee** – the fee shall be \$50.00 per day, up to \$750.00 per violation for all companies doing business with the Miami-Dade Aviation Department that are required to submit revenue reports on a recurring basis (monthly, quarterly, annually, etc.).
- **Wheelchair Lift Fee**—the fee shall be \$15.00 per use and will be assessed to commuter airlines that require wheelchair-lifting equipment.
- **Security Violation Fee** – the fee shall be; first offense \$100.00; second offense \$250.00; third offense \$500.00. In addition, all court costs will also be applicable.
- **Permit Application Fee for providers of goods and services to airlines and airport tenants** -the fee shall be \$1,000.00 per permit application. A non-refundable application fee will be charged for each permit application for the provision of goods and services to airlines and other tenants at a County Airport. The current fee is \$1,000.00 and may be amended from time to time.
- **Permit Extension Fee for providers of goods and services to airlines and airport tenants** – a minimum fee of \$500.00 which amount may be amended from time to time may also be assessed to cover the administrative costs associated with allowing a permit extension. Permit extensions are limited to 12 months.
- **Permit Penalty Fee For Non-Compliance** – the fee shall be \$50.00 for the first 30-day period and \$100.00 for any time after the first 30-day period up to a maximum of \$150.00 per permittee. The Permit Penalty Fee will apply to permittees that do not comply with required submission deadlines.
- **Aircraft Demolition Fee** – the fee shall be \$2,000.00 per month, per aircraft for months 1 through 3; and \$4,000.00 per month, per aircraft beginning at month 4 and each month thereafter.

**Other Fees (continued)**

- **Baggage or Property Impound Fees** – The fee shall be \$5.00 per day, per piece for the first 15 days; \$10.00 per day, per piece for 16 to 30 days; \$20.00 per day, per piece for 31+days. The fee is established to cover retrieval and storage costs of unattended or neglected baggage or property.
- **Background Check Fee** – the fee shall be \$168.00 plus a 15% administrative fee per background check. The background check fee is administered by an outside vendor and will enable the department to pay for background checks for individuals applying for leases, business opportunities and other real property opportunities at the County’s airports.
- **Animal Inspection Facility User Fees** – The following fees will apply for each animal that passes through the USDA Inspection Facility (Bldg. 815):
  - **Small Ruminants** (Sheep, goats, pigs, swine) - **\$25.00 flat fee per air waybill**
  - **Small Animals** (Dogs, cats, & other pet types) - **\$15.00 flat fee per air waybill**
  - **Livestock** (Equine, cattle, calves, ovine, caprine, porcine, Ostrich, etc.) - **\$45.00 per Head**
  - **Alpaca** - **\$25.00 per Head**
  - **Poultry** (Birds, baby chicks, turkey, etc.) - **\$25.00 flat fee per air waybill**
  - **Other** - **\$25.00 flat fee per air waybill**
- **Remittance Fee 5%** - Freight Handler will retain 5% of Inspection Fees for collecting amounts payable to Miami-Dade Aviation Department.
- **Average Electrical Consumption per kilowatt hour (kWh) Charge** – The charge shall be \$0.1065 per kilowatt hour consumed.
- **Airside Enforcement Processing Fee** – the fee shall be \$100.00 per civil violation. This fee covers costs associated with MDAD Airside Enforcement personnel that must testify at court hearings.
- **Violation Fees for Airport Concessionaires or Tenants** – The following fees may be charged by MDAD for violations of Chapter 25 of the Code of Miami-Dade County or agreements applicable to a Concessionaire or a Tenant:
  - **Violation of permitted use of a location** – The fee shall be \$100.00 per day, per location.
  - **Failure to maintain required hours of operation** – The fee shall be \$50.00 per day, per location.
  - **Failure to submit required documentation and reports** – The fee shall be \$50.00 per day, per report, up to \$750.00 per month. (Applies to reports recurring monthly, quarterly, annually, etc. such as monthly revenue reports and related documents.)
  - **Unauthorized advertising** – The fee shall be \$50.00 per day, per location.
  - **Failure to maintain premises in a clean state** – The fee shall be \$50.00 per day, per location.
  - **Failure to maintain pricing at a level required by agreement, or to conduct surveys as required** – The fee shall be \$50.00 per day, per location.
  - **Installation of unapproved items in locations** – The fee shall be \$50.00 per day, per location.
  - **Violation of other terms and conditions** – The fee shall be \$75.00 per day, per location.

The foregoing fees are due and payable from a Concessionaire or Tenant determined by MDAD to be in violation of either Chapter 25 or an applicable agreement or both. Imposition of such fees is an additional remedy available to MDAD for such violations and is not intended to waive MDAD’s right to terminate an agreement for such violations, in addition to imposing the foregoing fees.

**APPENDIX A TAB**

ALLOCATION OF OPERATING AND DEBT SERVICE COSTS BY COST CENTER WORKSHEET

Terminal Rental Rate Calculation Model  
Miami-Dade County Aviation Department  
Miami International Airport  
FY 2017-18

Division-Description	Budgeted FY 2017-18	Direct Expense	G&A Expense	Transfers	International Facilities Percentage	Domestic Baggage Claim Percentage	Outbound Baggage Makeup Percentage	Screening Percentage	Terminal Rent Percentage	Total Terminal Percentage	Non-Terminal Percentage	Total	International Facilities Expense	Domestic Baggage Claim Expense	Outbound Baggage Makeup Expense	Screening Expense	Terminal Rent Expense	Total Terminal Expenses	Non-Terminal Expenses	Total Expenses
					[A]	[B]	[C]	[D]	[E]	[F=A+B+C+D+E]	[G]	[F+G]								
01-Executive	2,075,896		\$2,075,896		4.9%	0.5%	1.8%	3.0%	51.8%	61.9%	38.1%	100.0%	\$100,681	\$11,002	\$36,328	\$61,447	\$1,075,314	\$1,284,772	\$791,124	\$2,075,896
02-Legal	2,545,528		2,545,528		4.9%	0.5%	1.8%	3.0%	51.8%	61.9%	38.1%	100.0%	123,458	13,491	44,547	75,348	1,318,584	1,575,427	970,101	2,545,528
03-Administration	463,431		463,431		4.9%	0.5%	1.8%	3.0%	51.8%	61.9%	38.1%	100.0%	22,476	2,456	8,110	13,718	240,057	286,817	176,614	463,431
04-Accounting	4,285,339		4,285,339		4.9%	0.5%	1.8%	3.0%	51.8%	61.9%	38.1%	100.0%	207,839	22,712	74,993	128,846	2,219,806	2,652,196	1,633,143	4,285,339
05-Finance & Strategy	1,021,708		1,021,708		4.9%	0.5%	1.8%	3.0%	51.8%	61.9%	38.1%	100.0%	49,553	5,415	17,880	30,243	529,245	632,335	389,373	1,021,708
06-Human Resources	16,452,010		16,452,010		4.9%	0.5%	1.8%	3.0%	51.8%	61.9%	38.1%	100.0%	797,922	87,196	287,910	486,979	8,522,141	10,182,149	6,269,861	16,452,010
07-Real Estate Management & Development	4,562,423		4,562,423		4.9%	0.5%	1.8%	3.0%	51.8%	61.9%	38.1%	100.0%	221,278	24,181	79,842	135,048	2,363,335	2,823,684	1,738,739	4,562,423
08-Capital Finance	3,983,879		3,983,879		4.9%	0.5%	1.8%	3.0%	51.8%	61.9%	38.1%	100.0%	193,218	21,115	69,718	117,923	2,063,649	2,465,623	1,518,256	3,983,879
09-Police	35,374,499	35,374,499			0.0%	0.0%	0.0%	28.2%	50.0%	78.2%	21.8%	100.0%	--	--	--	9,970,730	17,687,250	27,657,979	7,716,520	35,374,499
10-Governmental Affairs	527,169		527,169		4.9%	0.5%	1.8%	3.0%	51.8%	61.9%	38.1%	100.0%	25,568	2,794	9,225	15,604	273,074	326,265	200,904	527,169
11-Fire & Rescue	26,818,359	26,818,359			0.0%	0.0%	0.0%	0.0%	34.3%	34.3%	65.7%	100.0%	--	--	--	--	9,187,433	9,187,433	17,630,926	26,818,359
12-Fine Arts & Cultural Affairs	738,891		738,891		4.9%	0.5%	1.8%	3.0%	51.8%	61.9%	38.1%	100.0%	35,836	3,916	12,931	21,871	382,746	457,300	281,591	738,891
13-Contracts Administration	1,099,779		1,099,779		4.9%	0.5%	1.8%	3.0%	51.8%	61.9%	38.1%	100.0%	53,339	5,829	19,246	32,553	569,686	680,653	419,126	1,099,779
14-Maintenance	120,612,872	120,612,872			6.9%	1.5%	4.9%	0.0%	41.2%	54.5%	45.5%	100.0%	8,337,078	1,771,117	5,882,340	--	49,710,662	65,701,196	54,911,676	120,612,872
15-Facilities	2,740,320		2,740,320		0.0%	0.0%	0.0%	0.0%	0.0%	0.0%	100.0%	100.0%	--	--	--	--	--	--	2,740,320	2,740,320
15-Facilities Design--wayfinding/landscaping	3,127,909	3,127,909			0.0%	0.0%	0.0%	60.0%	60.0%	60.0%	40.0%	100.0%	--	--	--	--	1,876,745	1,876,745	1,251,164	3,127,909
16-Public & Customer Relations	2,538,497		2,538,497		4.9%	0.5%	1.8%	3.0%	51.8%	61.9%	38.1%	100.0%	123,117	13,454	44,424	75,140	1,314,941	1,571,076	967,421	2,538,497
17-Aviation Planning, Land Use & Grants	4,618,961		4,618,961		4.9%	0.5%	1.8%	3.0%	51.8%	61.9%	38.1%	100.0%	224,020	24,480	80,832	136,721	2,392,622	2,858,675	1,760,286	4,618,961
19-Program Controls	2,932,887		2,932,887		0.0%	0.0%	0.0%	70.0%	70.0%	70.0%	30.0%	100.0%	--	--	--	--	2,053,021	2,053,021	879,866	2,932,887
22-Information Systems - Administration	38,916,434		38,916,434		5.0%	0.0%	0.0%	0.0%	56.4%	61.4%	38.6%	100.0%	1,950,076	--	--	--	21,944,734	23,894,810	15,021,624	38,916,434
24-Business Retention & Development	838,258		838,258		0.5%	1.8%	3.0%	51.8%	61.9%	61.9%	38.1%	100.0%	40,656	4,443	14,670	24,812	434,218	518,798	319,460	838,258
25-Airside Operations	11,884,181	11,884,181			0.0%	0.0%	0.0%	0.0%	39.1%	39.1%	60.9%	100.0%	--	--	--	--	4,642,965	4,642,965	7,241,216	11,884,181
26-Terminal Operations	14,791,270		14,791,270		40.9%	0.0%	0.0%	59.1%	100.0%	100.0%	0.0%	100.0%	6,050,234	--	--	--	8,741,036	14,791,270	--	14,791,270
27-Landside Operations	13,669,797	13,669,797			0.0%	0.0%	0.0%	0.0%	0.0%	0.0%	100.0%	100.0%	--	--	--	--	--	--	13,669,797	13,669,797
28-Cargo Development	--	--	--	--	0.0%	0.0%	0.0%	0.0%	0.0%	0.0%	100.0%	100.0%	--	--	--	--	--	--	--	--
30-Non-Departmental O&M	38,550,000	38,550,000			0.0%	0.0%	0.0%	0.0%	76.3%	76.3%	23.7%	100.0%	--	--	--	--	29,399,001	29,399,001	9,150,999	38,550,000
30-Non-Departmental G&A	24,666,019		24,666,019		4.9%	0.5%	1.8%	3.0%	51.8%	61.9%	38.1%	100.0%	1,196,302	130,730	431,655	730,114	12,776,998	15,265,799	9,400,220	24,666,019
30-Non-Departmental Deposits	169,776,818			169,776,818	0.0%	0.0%	0.0%	0.0%	0.0%	0.0%	100.0%	100.0%	--	--	--	--	--	--	169,776,818	169,776,818
-Subordinate Debt Payment	20,461,136	--		20,461,136	0.0%	0.0%	0.0%	0.0%	50.0%	50.0%	50.0%	100.0%	--	--	--	--	10,230,568	10,230,568	20,461,136	20,461,136
30-Non-Departmental Debt Service	380,234,403	21,878,969	58,000,000	358,355,434	1.4%	0.5%	3.5%	0.0%	73.4%	78.7%	21.3%	100.0%	4,106,144	1,327,738	9,824,813	87,708	208,856,633	224,203,035	98,031,368	322,234,403
31-Management Agreements	70,415,501	70,415,501			0.0%	0.0%	0.0%	0.0%	47.5%	47.5%	52.5%	100.0%	--	--	--	--	33,471,268	33,471,268	36,944,233	70,415,501
33-AVIATION DEVELOPMENT FUND	--	--	--	--	0.0%	0.0%	0.0%	0.0%	0.0%	0.0%	100.0%	100.0%	--	--	--	--	--	--	--	--
33-Minority Affairs	846,707		846,707		4.9%	0.5%	1.8%	3.0%	51.8%	61.9%	38.1%	100.0%	41,065	4,488	14,817	25,063	438,594	524,027	322,680	846,707
38-Civil Environmental Engineering	8,851,191		8,851,191		0.0%	0.0%	0.0%	0.0%	0.0%	0.0%	100.0%	100.0%	--	--	--	--	--	--	8,851,191	8,851,191
40-Security & Safety	17,819,823		17,819,823		4.9%	0.5%	1.8%	3.0%	51.8%	61.9%	38.1%	100.0%	864,261	94,445	311,847	527,467	9,230,668	11,028,688	6,791,135	17,819,823
42-Communications	704,125		704,125		4.9%	0.5%	1.8%	3.0%	51.8%	61.9%	38.1%	100.0%	34,150	3,732	12,322	20,842	364,737	435,783	268,342	704,125
43-Aviation Business Planning	--	--	--	--	4.9%	0.5%	1.8%	3.0%	51.8%	61.9%	38.1%	100.0%	--	--	--	--	--	--	--	--
44-Marketing	2,037,466		2,037,466		4.9%	0.5%	1.8%	3.0%	51.8%	61.9%	38.1%	100.0%	98,817	10,799	35,656	60,309	1,055,407	1,260,988	776,478	2,037,466
45-North Terminal Development	--	--	--	--	4.9%	0.5%	1.8%	3.0%	51.8%	61.9%	38.1%	100.0%	--	--	--	--	--	--	--	--
47-Professional Compliance	1,606,887		1,606,887		4.9%	0.5%	1.8%	3.0%	51.8%	61.9%	38.1%	100.0%	77,934	8,517	28,121	47,564	832,367	994,502	612,385	1,606,887
50-Noise Abatement	738,832		738,832		0.0%	0.0%	0.0%	0.0%	0.0%	0.0%	100.0%	100.0%	--	--	--	--	--	--	738,832	738,832
51-Commodities Management	3,852,738		3,852,738		4.9%	0.5%	1.8%	3.0%	51.8%	61.9%	38.1%	100.0%	186,858	20,420	67,423	114,041	1,995,718	2,384,460	1,468,278	3,852,738
52-Protocol & International Affairs	1,232,424		1,232,424		4.9%	0.5%	1.8%	3.0%	51.8%	61.9%	38.1%	100.0%	59,773	6,532	21,567	36,480	638,396	762,747	469,677	1,232,424
55-Financial Planning & Performance Analysis	596,692		596,692		4.9%	0.5%	1.8%	3.0%	51.8%	61.9%	38.1%	100.0%	28,940	3,162	10,442	17,662	309,086	369,293	227,399	596,692
56-Operations	1,002,221		1,002,221		4.9%	0.5%	1.8%	3.0%	51.8%	61.9%	38.1%	100.0%	48,608	5,312	17,539	29,666	519,150	620,275	381,946	1,002,221
57-Facilities Development	470,888		470,888		4.9%	0.5%	1.8%	3.0%	51.8%	61.9%	38.1%	100.0%	22,838	2,496	8,241	13,938	243,920	291,433	179,455	470,888
58-Facilities Management	1,567,600		1,567,600		4.9%	0.5%	1.8%	3.0%	51.8%	61.9%	38.1%	100.0%	76,029	8,308	27,433	46,401	812,017	970,188	597,412	1,567,600
59-Security	--	--	--	--	4.9%	0.5%	1.8%	3.0%	51.8%	61.9%	38.1%	100.0%	--	--	--	--	--	--	--	--
60-Grants Management	--	--	--	--	4.9%	0.5%	1.8%	3.0%	51.8%	61.9%	38.1%	100.0%	--	--	--	--	--	--	--	--
61-Strategic Planning	--	--	--	--	4.9%	0.5%	1.8%	3.0%	51.8%	61.9%	38.1%	100.0%	--	--	--	--	--	--	--	--
62-Security Operations Command Center	--	--	--	--	4.9%	0.5%	1.8%	3.0%	51.8%	61.9%	38.1%	100.0%	--	--	--	--	--	--	--	--
63-Cash Management	--	--	--	--	4.9%	0.5%	1.8%	3.0%	51.8%	61.9%	38.1%	100.0%	--	--	--	--	--	--	--	--
64-Airport Concession & Business Development	2,683,788		2,683,788		4.9%	0.5%	1.8%	3.0%	51.8%	61.9%	38.1%	100.0%	130,164	14,224	46,966	79,440				

ALLOCATION OF OPERATING AND DEBT SERVICE COSTS BY COST CENTER WORKSHEET  
 Terminal Rental Rate Calculation Model  
 Miami-Dade County Aviation Department  
 Miami International Airport  
 FY 2017-18

Division-Description	Budgeted FY 2017-18	Direct Expense	G&A Expense	Transfers	International Facilities Percentage	Domestic Baggage Claim Percentage	Outbound Baggage Makeup Percentage	Screening Percentage	Terminal Rent Percentage	Total Terminal Percentage	Non-Terminal Percentage	Total	International Facilities Expense	Domestic Baggage Claim Expense	Outbound Baggage Makeup Expense	Screening Expense	Terminal Rent Expense	Total Terminal Expenses	Non-Terminal Expenses	Total Expenses
<b>ALLOCATION OF O&amp;M BY DIVISIONS</b>																				
<b>ALLOCATION OF POLICE O&amp;M</b>																				
Administration	\$0								78.2%	78.2%	21.8%	100.0%	--	--	--	--	--	--	--	--
Uniform Patrol	33,311,049				0.0%	0.0%	0.0%	29.9%	50.0%	79.9%	20.1%	100.0%	--	--	--	9,970,730	16,655,525	26,626,255	6,684,795	33,311,050
General Investigation Unit	2,063,450				0.0%	0.0%	0.0%	0.0%	50.0%	50.0%	50.0%	100.0%	--	--	--	--	1,031,725	1,031,725	--	2,063,450
<b>09-TOTAL POLICE O&amp;M</b>	<b>\$35,374,499</b>	<b>\$35,374,499</b>			<b>0.0%</b>	<b>0.0%</b>	<b>0.0%</b>	<b>28.2%</b>	<b>50.0%</b>	<b>78.2%</b>	<b>21.8%</b>	<b>100.0%</b>	<b>0</b>	<b>0</b>	<b>0</b>	<b>\$9,970,730</b>	<b>\$17,687,250</b>	<b>\$27,657,980</b>	<b>\$7,716,520</b>	<b>\$35,374,500</b>
<b>ALLOCATION OF FIRE-RESCUE O&amp;M</b>																				
Administration	\$588,930				0	0	0	0	34.3%	34.3%	65.7%	100.0%	--	--	--	--	201,756	201,756	387,174	588,930
Rescue	24,931,940				0.0%	0.0%	0.0%	0.0%	35.0%	35.0%	65.0%	100.0%	--	--	--	--	8,726,179	8,726,179	16,205,761	24,931,940
Inspection	--				0.0%	0.0%	0.0%	0.0%	20.0%	20.0%	80.0%	100.0%	--	--	--	--	--	--	--	--
Fire-fighters	--				0.0%	0.0%	0.0%	0.0%	20.0%	20.0%	80.0%	100.0%	--	--	--	--	--	--	--	--
Fire Technician	1,297,489				0.0%	0.0%	0.0%	0.0%	20.0%	20.0%	80.0%	100.0%	--	--	--	--	259,498	259,498	1,037,991	1,297,489
<b>11-TOTAL FIRE-RESCUE O&amp;M</b>	<b>\$26,818,359</b>	<b>\$26,818,359</b>			<b>0.0%</b>	<b>0.0%</b>	<b>0.0%</b>	<b>0.0%</b>	<b>34.3%</b>	<b>34.3%</b>	<b>65.7%</b>	<b>100.0%</b>	<b>0</b>	<b>0</b>	<b>0</b>	<b>0</b>	<b>\$9,187,433</b>	<b>\$9,187,433</b>	<b>\$17,630,926</b>	<b>\$26,818,359</b>
<b>ALLOCATION OF MAINTENANCE O&amp;M</b>																				
Administration	--				0	0	0	0	54.5%	54.5%	45.5%	100.0%	--	--	--	--	--	--	--	--
Service Station	1,195,000				0.0%	0.0%	0.0%	0.0%	0.0%	0.0%	100.0%	100.0%	--	--	--	--	--	--	1,195,000	1,195,000
Fleet Management	3,247,051				0.0%	0.0%	0.0%	0.0%	0.0%	0.0%	100.0%	100.0%	--	--	--	--	--	--	3,247,051	3,247,051
Warehouse	--				0.0%	0.0%	0.0%	0.0%	60.0%	60.0%	40.0%	100.0%	--	--	--	--	--	--	--	--
General Building Repair & OCI Projects	2,820,872				0.0%	0.0%	0.0%	0.0%	0.0%	0.0%	100.0%	100.0%	--	--	--	--	--	--	2,820,872	2,820,872
Manager - Facilities Maintenance	--				0.0%	0.0%	0.0%	0.0%	100.0%	100.0%	0.0%	100.0%	--	--	--	--	--	--	--	--
Airport Fire Suppression Technicians	6,402,477				0.0%	0.0%	0.0%	0.0%	70.0%	70.0%	30.0%	100.0%	--	--	--	--	4,481,734	4,481,734	1,920,743	6,402,477
A/C Control	--				0.0%	0.0%	0.0%	0.0%	100.0%	100.0%	0.0%	100.0%	--	--	--	--	--	--	--	--
Generators	773,396				0.0%	0.0%	0.0%	0.0%	60.0%	60.0%	40.0%	100.0%	--	--	--	--	464,038	464,038	309,358	773,396
Tamiami Airport Maintenance	792,719				0.0%	0.0%	0.0%	0.0%	0.0%	0.0%	100.0%	100.0%	--	--	--	--	--	--	792,719	792,719
Opa-Locka Airport Maintenance	643,582				0.0%	0.0%	0.0%	0.0%	0.0%	0.0%	100.0%	100.0%	--	--	--	--	--	--	643,582	643,582
Security Infrastructure	4,538,415				0.0%	0.0%	0.0%	0.0%	0.0%	0.0%	100.0%	100.0%	--	--	--	--	--	--	4,538,415	4,538,415
Planning & Programming	--				0.0%	0.0%	0.0%	0.0%	100.0%	100.0%	0.0%	100.0%	--	--	--	--	--	--	--	--
Facilities Initiation	--				0.0%	0.0%	0.0%	0.0%	100.0%	100.0%	0.0%	100.0%	--	--	--	--	--	--	--	--
Plumbing Shop, Terminal GBR	2,666,220				0.0%	0.0%	0.0%	0.0%	68.0%	68.0%	32.0%	100.0%	--	--	--	--	1,813,030	1,813,030	853,190	2,666,220
Electrical Shop - Facilities Maintenance	3,611,227				0.0%	0.0%	0.0%	0.0%	90.0%	90.0%	10.0%	100.0%	--	--	--	--	3,250,104	3,250,104	361,123	3,611,227
Air Conditioning - Facilities Maintenance	5,401,915				0.0%	0.0%	0.0%	0.0%	100.0%	100.0%	0.0%	100.0%	--	--	--	--	5,401,915	5,401,915	--	5,401,915
Mechanical Conveyors	--				20.0%	40.0%	20.0%	0.0%	20.0%	20.0%	0.0%	100.0%	--	--	--	--	--	--	--	--
Loading Bridges	3,963,293				0.0%	0.0%	0.0%	0.0%	0.0%	0.0%	100.0%	100.0%	--	--	--	--	--	--	--	3,963,293
Mechanical Maintenance	773,506				0.0%	0.0%	0.0%	0.0%	20.0%	20.0%	80.0%	100.0%	--	--	--	--	154,701	154,701	618,805	773,506
Terminal A/C Shop	2,069,770				0.0%	0.0%	0.0%	0.0%	100.0%	100.0%	0.0%	100.0%	--	--	--	--	2,069,770	2,069,770	--	2,069,770
Painting	--				0.0%	0.0%	0.0%	0.0%	50.0%	50.0%	50.0%	100.0%	--	--	--	--	--	--	--	--
Terminal Maintenance	1,887,308				0.0%	0.0%	0.0%	0.0%	100.0%	100.0%	0.0%	100.0%	--	--	--	--	1,887,308	1,887,308	--	1,887,308
Carpenter Shop	1,322,220				0.0%	0.0%	0.0%	0.0%	90.0%	90.0%	10.0%	100.0%	--	--	--	--	1,189,998	1,189,998	132,222	1,322,220
Striping	2,307,429				0.0%	0.0%	0.0%	0.0%	0.0%	0.0%	100.0%	100.0%	--	--	--	--	--	--	2,307,429	2,307,429

ALLOCATION OF OPERATING AND DEBT SERVICE COSTS BY COST CENTER WORKSHEET

Terminal Rental Rate Calculation Model  
 Miami-Dade County Aviation Department  
 Miami International Airport  
 FY 2017-18

Division-Description	Budgeted FY 2017-18	Direct Expense	G&A Expense	Transfers	International Facilities Percentage	Domestic Baggage Claim Percentage	Outbound Baggage Makeup Percentage	Screening Percentage	Terminal Rent Percentage	Total Terminal Percentage	Non-Terminal Percentage	Total	International Facilities Expense	Domestic Baggage Claim Expense	Outbound Baggage Makeup Expense	Screening Expense	Terminal Rent Expense	Total Terminal Expenses	Non-Terminal Expenses	Total Expenses
Terminal Plumbing	1,041,275				0.0%	0.0%	0.0%	0.0%	80.0%	80.0%	20.0%	100.0%	--	--	--	--	833,020	833,020	208,255	1,041,275
Security - Building Management & Controls	777,010				0.0%	0.0%	0.0%	0.0%	95.0%	95.0%	5.0%	100.0%	--	--	--	--	738,160	738,160	38,851	777,011
Video Services	1,034,169				0.0%	0.0%	0.0%	0.0%	95.0%	95.0%	5.0%	100.0%	--	--	--	--	982,461	982,461	51,708	1,034,169
Locksmith Shop	481,703				0.0%	0.0%	0.0%	0.0%	85.0%	85.0%	15.0%	100.0%	--	--	--	--	409,448	409,448	72,255	481,703
Roofing	--				0.0%	0.0%	0.0%	0.0%	100.0%	100.0%	0.0%	100.0%	--	--	--	--	--	--	--	--
Landscape - General	3,686,348				0.0%	0.0%	0.0%	0.0%	0.0%	0.0%	100.0%	100.0%	--	--	--	--	--	--	3,686,348	3,686,348
Airfield Lighting	1,035,227				0.0%	0.0%	0.0%	0.0%	0.0%	0.0%	100.0%	100.0%	--	--	--	--	--	--	1,035,227	1,035,227
Public Works	1,939,763				0.0%	0.0%	0.0%	0.0%	2.0%	2.0%	98.0%	100.0%	--	--	--	--	38,795	38,795	1,900,968	1,939,763
Waste Management - Incinerator	3,612,851				0.0%	0.0%	0.0%	0.0%	100.0%	100.0%	0.0%	100.0%	--	--	--	--	3,612,851	3,612,851	--	3,612,851
Canal Maintenance	--				0.0%	0.0%	0.0%	0.0%	0.0%	0.0%	100.0%	100.0%	--	--	--	--	--	--	--	--
Quality Assurance	839,253				0.0%	0.0%	0.0%	0.0%	100.0%	100.0%	0.0%	100.0%	--	--	--	--	839,253	839,253	--	839,253
Safety & Customer Serv.	--				0.0%	0.0%	0.0%	0.0%	100.0%	100.0%	0.0%	100.0%	--	--	--	--	--	--	--	--
Terminal-Wide Security (CCTV F034F)	--				0.0%	0.0%	0.0%	0.0%	100.0%	100.0%	0.0%	100.0%	--	--	--	--	--	--	--	--
Cargo Area (West Cargo)	1,840,189				0.0%	0.0%	0.0%	0.0%	0.0%	0.0%	100.0%	100.0%	--	--	--	--	--	--	1,840,189	1,840,189
Lift Stations & FM Plumbing	2,943,997				0.0%	0.0%	0.0%	0.0%	0.0%	0.0%	100.0%	100.0%	--	--	--	--	--	--	2,943,997	2,943,997
Maintenance Construction Team	1,109,470				0.0%	0.0%	0.0%	0.0%	0.0%	0.0%	100.0%	100.0%	--	--	--	--	--	--	1,109,470	1,109,470
Engineering Design & Commissioning	3,265,503				0.0%	0.0%	0.0%	0.0%	0.0%	0.0%	100.0%	100.0%	--	--	--	--	--	--	3,265,503	3,265,503
Systems Contract Management	6,340,985				0.0%	0.0%	0.0%	0.0%	50.0%	50.0%	50.0%	100.0%	--	--	--	--	3,170,493	3,170,493	3,170,493	6,340,986
Special Projects	--				0.0%	0.0%	0.0%	0.0%	90.0%	90.0%	10.0%	100.0%	--	--	--	--	--	--	--	--
Interiors	2,312,804				0.0%	0.0%	0.0%	0.0%	85.0%	85.0%	15.0%	100.0%	--	--	--	--	1,965,883	1,965,883	346,921	2,312,804
Signage Design	3,083,469				0.0%	0.0%	0.0%	0.0%	55.0%	55.0%	45.0%	100.0%	--	--	--	--	1,695,908	1,695,908	1,387,561	3,083,469
Technical Support	3,118,741				0.0%	0.0%	0.0%	0.0%	85.0%	85.0%	15.0%	100.0%	--	--	--	--	2,650,930	2,650,930	467,811	3,118,741
Contracts - Terminal Maintenance (Electrical)	430,013				0.0%	0.0%	0.0%	0.0%	0.0%	0.0%	100.0%	100.0%	--	--	--	--	--	--	430,013	430,013
OUTSIDE CONTRACTS	34,300,891				21.3%	5.2%	17.1%	0.0%	32.1%	75.7%	24.3%	100.0%	7,301,046	1,771,117	5,882,340	--	11,024,831	25,979,334	8,321,557	34,300,891
APM - Airport People Mover (TRAIN - Concourse "E" Satellite)	2,072,063				50.0%	0.0%	0.0%	0.0%	50.0%	100.0%	0.0%	100.0%	1,036,032	--	--	--	1,036,032	2,072,064	--	2,072,064
Relamping	930,748				0.0%	0.0%	0.0%	0.0%	0.0%	0.0%	100.0%	100.0%	--	--	--	--	--	--	930,748	930,748
<b>14-TOTAL MAINTENANCE O&amp;M</b>	<b>\$120,612,872</b>	<b>\$120,612,872</b>			<b>6.9%</b>	<b>1.5%</b>	<b>4.9%</b>	<b>0.0%</b>	<b>41.2%</b>	<b>54.5%</b>	<b>45.5%</b>	<b>100.0%</b>	<b>\$8,337,078</b>	<b>\$1,771,117</b>	<b>\$5,882,340</b>	<b>\$0</b>	<b>\$49,710,663</b>	<b>\$65,701,198</b>	<b>\$54,911,677</b>	<b>\$120,612,875</b>
<b>ALLOCATION OF INFORMATION SYSTEMS</b>																				
Administration	\$22,093,977				0	0	0	0	61.4%	61.4%	38.6%	100.0%	--	--	--	--	13,565,770	13,565,770	8,528,207	22,093,977
Telephone	9,057,115				0.0%	0.0%	0.0%	0.0%	67.0%	67.0%	33.0%	100.0%	--	--	--	--	6,068,267	6,068,267	2,988,848	9,057,115
CUTE, CUSS (SITA Contract)	4,389,465				20.0%	0.0%	0.0%	0.0%	10.0%	30.0%	70.0%	100.0%	877,893	--	--	--	438,947	1,316,840	3,072,626	4,389,466
CBP Kiosks (SITA Contract)	496,260				100.0%	0.0%	0.0%	0.0%	0.0%	100.0%	0.0%	100.0%	496,260	--	--	--	--	496,260	--	496,260
AOIS, NSS and Other O/S Contracts	2,879,617				20.0%	0.0%	0.0%	0.0%	65.0%	85.0%	15.0%	100.0%	575,923	--	--	--	1,871,751	2,447,674	431,943	2,879,617
<b>22-TOTAL INFORMATION SYSTEMS O&amp;M</b>	<b>\$38,916,434</b>	<b>\$38,916,434</b>			<b>5.0%</b>	<b>0.0%</b>	<b>0.0%</b>	<b>0.0%</b>	<b>56.4%</b>	<b>61.4%</b>	<b>38.6%</b>	<b>100.0%</b>	<b>\$1,950,076</b>	<b>\$0</b>	<b>\$0</b>	<b>\$0</b>	<b>\$21,944,735</b>	<b>\$23,894,811</b>	<b>\$15,021,624</b>	<b>\$38,916,435</b>
<b>ALLOCATION OF AIRSIDE OPS O&amp;M</b>																				
Administration	\$1,876,142				0	0	0	0	39.1%	39.1%	60.9%	100.0%	--	--	--	--	732,980	732,980	1,143,162	1,876,142
Ramp Control	3,293,107				0.0%	0.0%	0.0%	0.0%	0.0%	0.0%	100.0%	100.0%	--	--	--	--	--	--	3,293,107	3,293,107
Access Control	2,510,860				0.0%	0.0%	0.0%	0.0%	0.0%	0.0%	100.0%	100.0%	--	--	--	--	--	--	2,510,860	2,510,860
Gate Assignment	3,721,421				0.0%	0.0%	0.0%	0.0%	100.0%	100.0%	0.0%	100.0%	--	--	--	--	3,721,421	3,721,421	--	3,721,421
Noise Control	--				0.0%	0.0%	0.0%	0.0%	0.0%	0.0%	100.0%	100.0%	--	--	--	--	--	--	--	--
<b>25-TOTAL AIRSIDE OPS O&amp;M</b>	<b>\$11,401,530</b>	<b>\$11,401,530</b>			<b>0.0%</b>	<b>0.0%</b>	<b>0.0%</b>	<b>0.0%</b>	<b>39.1%</b>	<b>39.1%</b>	<b>60.9%</b>	<b>100.0%</b>	<b>\$0</b>	<b>\$0</b>	<b>\$0</b>	<b>\$0</b>	<b>\$4,454,401</b>	<b>\$4,454,401</b>	<b>\$6,947,129</b>	<b>\$11,401,530</b>

ALLOCATION OF OPERATING AND DEBT SERVICE COSTS BY COST CENTER WORKSHEET  
 Terminal Rental Rate Calculation Model  
 Miami-Dade County Aviation Department  
 Miami International Airport  
 FY 2017-18

Division-Description	Budgeted FY 2017-18	Direct Expense	G&A Expense	Transfers	International Facilities Percentage	Domestic Baggage Claim Percentage	Outbound Baggage Makeup Percentage	Screening Percentage	Terminal Rent Percentage	Total Terminal Percentage	Non-Terminal Percentage	Total	International Facilities Expense	Domestic Baggage Claim Expense	Outbound Baggage Makeup Expense	Screening Expense	Terminal Rent Expense	Total Terminal Expenses	Non-Terminal Expenses	Total Expenses	
<b>ALLOCATION OF TERMINAL OPS O&amp;M</b>																					
Administration	\$1,105,071				0	0	0	0	100.0%	100.0%	0.0%	100.0%	--	--	--	--	1,105,071	1,105,071	--	1,105,071	
Domestic Operations	4,995,527				0.0%	0.0%	0.0%	0.0%	100.0%	100.0%	0.0%	100.0%	--	--	--	--	4,995,527	4,995,527	--	4,995,527	
International Operations	6,050,234				100.0%	0.0%	0.0%	0.0%	0.0%	100.0%	0.0%	100.0%	6,050,234	--	--	--	--	6,050,234	--	6,050,234	
Tour & Charter Operations	--				100.0%	0.0%	0.0%	0.0%	0.0%	100.0%	0.0%	100.0%	--	--	--	--	--	--	--	--	
Contract Services	992,744				0.0%	0.0%	0.0%	0.0%	100.0%	100.0%	0.0%	100.0%	--	--	--	--	992,744	992,744	--	992,744	
Passenger & Visitor services	1,647,694				0.0%	0.0%	0.0%	0.0%	100.0%	100.0%	0.0%	100.0%	--	--	--	--	1,647,694	1,647,694	--	1,647,694	
<b>26-TOTAL TERMINAL OPS O&amp;M</b>	<b>\$14,791,270</b>	<b>\$14,791,270</b>			<b>40.9%</b>	<b>0.0%</b>	<b>0.0%</b>	<b>0.0%</b>	<b>59.1%</b>	<b>100.0%</b>	<b>0.0%</b>	<b>100.0%</b>	<b>\$6,050,234</b>	<b>\$0</b>	<b>\$0</b>	<b>\$0</b>	<b>\$8,741,036</b>	<b>\$14,791,270</b>	<b>\$0</b>	<b>\$14,791,270</b>	
<b>ALLOCATION OF LANDSIDE OPS O&amp;M</b>																					
Administration	\$979,809								0.0%	0.0%	100.0%	100.0%	--	--	--	--	--	--	979,809	979,809	
Ramp & Garage Control	11,217,301				0.0%	0.0%	0.0%	0.0%	0.0%	0.0%	100.0%	100.0%	--	--	--	--	--	--	11,217,301	11,217,301	
Towing	--				0.0%	0.0%	0.0%	0.0%	0.0%	0.0%	100.0%	100.0%	--	--	--	--	--	--	--	--	
Taxi	--				0.0%	0.0%	0.0%	0.0%	0.0%	0.0%	100.0%	100.0%	--	--	--	--	--	--	--	--	
Identification	--				0.0%	0.0%	0.0%	0.0%	0.0%	0.0%	100.0%	100.0%	--	--	--	--	--	--	--	--	
Contract Services	--				0.0%	0.0%	0.0%	0.0%	0.0%	0.0%	100.0%	100.0%	--	--	--	--	--	--	--	--	
Control Function	745,266				0.0%	0.0%	0.0%	0.0%	0.0%	0.0%	100.0%	100.0%	--	--	--	--	--	--	745,266	745,266	
Employee Parking Operations	727,421				0.0%	0.0%	0.0%	0.0%	0.0%	0.0%	100.0%	100.0%	--	--	--	--	--	--	727,421	727,421	
<b>27-TOTAL LANDSIDE OPS O&amp;M</b>	<b>\$13,669,797</b>	<b>\$13,669,797</b>			<b>0.0%</b>	<b>0.0%</b>	<b>0.0%</b>	<b>0.0%</b>	<b>0.0%</b>	<b>0.0%</b>	<b>100.0%</b>	<b>100.0%</b>	<b>\$0</b>	<b>\$0</b>	<b>\$0</b>	<b>\$0</b>	<b>\$0</b>	<b>\$0</b>	<b>\$13,669,797</b>	<b>\$13,669,797</b>	
<b>ALLOCATION OF NON-DEPT O&amp;M</b>																					
Telephone	\$500,000				0.0%	0.0%	0.0%	0.0%	67.0%	67.0%	33.0%	100.0%	--	--	--	--	335,000	335,000	165,000	500,000	
Electrical Service	27,000,000				0.0%	0.0%	0.0%	0.0%	75.0%	75.0%	25.0%	100.0%	--	--	--	--	20,250,000	20,250,000	6,749,999	26,999,999	
Natural Gas Service	50,000				0.0%	0.0%	0.0%	0.0%	28.0%	28.0%	72.0%	100.0%	--	--	--	--	14,000	14,000	36,000	50,000	
Water & Sewer Service	11,000,000				0.0%	0.0%	0.0%	0.0%	80.0%	80.0%	20.0%	100.0%	--	--	--	--	8,800,000	8,800,000	2,200,000	11,000,000	
<b>30-TOTAL NON-DEPARTMENTAL O&amp;M</b>	<b>\$38,550,000</b>				<b>0.0%</b>	<b>0.0%</b>	<b>0.0%</b>	<b>0.0%</b>	<b>76.3%</b>	<b>76.3%</b>	<b>23.7%</b>	<b>100.0%</b>	<b>\$0</b>	<b>\$0</b>	<b>\$0</b>	<b>\$0</b>	<b>\$29,399,000</b>	<b>\$29,399,000</b>	<b>\$9,150,999</b>	<b>\$38,549,999</b>	



ALLOCATION OF OPERATING AND DEBT SERVICE COSTS BY COST CENTER WORKSHEET  
 Terminal Rental Rate Calculation Model  
 Miami-Dade County Aviation Department  
 Miami International Airport  
 FY 2017-18

Division-Description	Budgeted FY 2017-18	Direct Expense	G&A Expense	Transfers	International Facilities Percentage	Domestic Baggage Claim Percentage	Outbound Baggage Makeup Percentage	Screening Percentage	Terminal Rent Percentage	Total Terminal Percentage	Non-Terminal Percentage	Total	International Facilities Expense	Domestic Baggage Claim Expense	Outbound Baggage Makeup Expense	Screening Expense	Terminal Rent Expense	Total Terminal Expenses	Non-Terminal Expenses	Total Expenses
<b>ALLOCATION OF MGMT AGREEMENTS</b>																				
Sky Caps / Porter	--				100.0%	0.0%	0.0%	0.0%	0.0%	100.0%	0.0%	100.0%	--	--	--	--	--	--	--	--
Smarte Carte FIS	--				100.0%	0.0%	0.0%	0.0%	0.0%	100.0%	0.0%	100.0%	--	--	--	--	--	--	--	--
Unicco/Vista/N&K Janitorial	36,342,311				0.0%	0.0%	0.0%	0.0%	92.1%	92.1%	7.9%	100.0%	--	--	--	--	33,471,268	33,471,268	2,871,043	36,342,311
Other Management Contracts	34,073,190				0.0%	0.0%	0.0%	0.0%	0.0%	0.0%	100.0%	100.0%	--	--	--	--	--	--	34,073,190	34,073,190
<b>31-TOTAL MGMT AGREEMENTS</b>	<b>\$70,415,501</b>	<b>\$70,415,501</b>			<b>0.0%</b>	<b>0.0%</b>	<b>0.0%</b>	<b>0.0%</b>	<b>47.5%</b>	<b>47.5%</b>	<b>52.5%</b>	<b>100.0%</b>	<b>\$0</b>	<b>\$0</b>	<b>\$0</b>	<b>\$0</b>	<b>\$33,471,268</b>	<b>\$33,471,268</b>	<b>\$36,944,233</b>	<b>\$70,415,501</b>
<b>ALLOCATION OF G/A AIRPORT O&amp;M</b>																				
	<b>\$3,431,145</b>	<b>\$3,431,145</b>											<b>\$0</b>	<b>\$0</b>	<b>\$0</b>	<b>\$0</b>	<b>\$0</b>	<b>\$0</b>	<b>\$3,431,145</b>	<b>\$3,431,145</b>
<b>TOTAL DIRECT O&amp;M</b>	<b>\$373,981,407</b>												<b>\$16,337,388</b>	<b>\$1,771,117</b>	<b>\$5,882,340</b>	<b>\$9,970,730</b>	<b>\$174,595,786</b>	<b>\$208,557,361</b>	<b>\$165,424,050</b>	<b>\$373,981,411</b>
<b>ALLOCATION OF MAINT. O&amp;M BY SUBDIVISIONS</b>																				
<b>ALLOCATION OF CONTRACT SERVICES</b>																				
Outside Maintenance-Motor Vehicles	--				0.0%	0.0%	0.0%	0.0%	0.0%	100.0%	100.0%	100.0%	--	--	--	--	--	--	--	--
Pest Control	--				0.0%	0.0%	0.0%	0.0%	100.0%	100.0%	0.0%	100.0%	--	--	--	--	--	--	--	--
Other Outside Maintenance	1,753,647				0.0%	0.0%	0.0%	0.0%	0.0%	100.0%	100.0%	100.0%	--	--	--	--	--	--	1,753,647	1,753,647
Employee Shuttle	--				0.0%	0.0%	0.0%	0.0%	0.0%	100.0%	100.0%	100.0%	--	--	--	--	--	--	--	--
Laboratory Services	--				0.0%	0.0%	0.0%	0.0%	100.0%	100.0%	0.0%	100.0%	--	--	--	--	--	--	--	--
Water Treatment Service	--				0.0%	0.0%	0.0%	0.0%	100.0%	100.0%	0.0%	100.0%	--	--	--	--	--	--	--	--
Daimler-Chrysler monthly	--				66.7%	0.0%	0.0%	0.0%	33.3%	100.0%	0.0%	100.0%	--	--	--	--	--	--	--	--
Automated People Mover (NTD Train)	7,560,632				50.0%	0.0%	0.0%	0.0%	50.0%	100.0%	0.0%	100.0%	3,780,316	--	--	--	3,780,316	7,560,632	--	7,560,632
MIA Mover (RCF Train)	4,568,596				0.0%	0.0%	0.0%	0.0%	0.0%	100.0%	100.0%	100.0%	--	--	--	--	--	--	4,568,596	4,568,596
JBT & Oxford Combined BHS Contract	10,653,733				32.0%	15.0%	53.0%	0.0%	0.0%	100.0%	0.0%	100.0%	3,409,195	1,598,060	5,646,478	--	--	--	10,653,733	10,653,733
Reimbursements for Outside Contracts - L Services	--				0.0%	0.0%	0.0%	0.0%	100.0%	100.0%	0.0%	100.0%	--	--	--	--	--	--	--	--
Outside Maintenance-ASIO/B baggage	292,000				0.0%	50.0%	50.0%	0.0%	0.0%	100.0%	0.0%	100.0%	--	146,000	146,000	--	--	--	292,000	292,000
Outside Maintenance-Terminal Elevator (Schindler)	1,895,023				0.0%	0.0%	0.0%	0.0%	90.0%	90.0%	10.0%	100.0%	--	--	--	--	1,705,521	1,705,521	189,502	1,895,023
Outside Maintenance-Terminal Elevator (Otis)	701,860				0.0%	0.0%	0.0%	0.0%	3.0%	3.0%	97.0%	100.0%	--	--	--	--	21,056	21,056	680,804	701,860
Outside Maintenance-Terminal Elevator (Thyssen)	1,052,790				0.0%	0.0%	0.0%	0.0%	30.0%	30.0%	70.0%	100.0%	--	--	--	--	315,837	315,837	736,953	1,052,790
Outside Maintenance-Terminal Elevator (Kone)	3,368,929				0.0%	0.0%	0.0%	0.0%	95.0%	95.0%	5.0%	100.0%	--	--	--	--	3,200,483	3,200,483	168,446	3,368,929
Outside Maintenance-Bldg 100 Elevator (Mowrey)	0				0.0%	0.0%	0.0%	0.0%	0.0%	100.0%	100.0%	100.0%	--	--	--	--	--	--	--	--
Building Maintenance	--				0.0%	0.0%	0.0%	0.0%	50.0%	50.0%	50.0%	100.0%	--	--	--	--	--	--	--	--
Painting	--				0.0%	0.0%	0.0%	0.0%	50.0%	50.0%	50.0%	100.0%	--	--	--	--	--	--	--	--
Baggage (other outside contractual)	--				0.0%	100.0%	0.0%	0.0%	0.0%	100.0%	0.0%	100.0%	--	--	--	--	--	--	--	--
Plumbing	--				0.0%	0.0%	0.0%	0.0%	50.0%	50.0%	50.0%	100.0%	--	--	--	--	--	--	--	--
Electrical	0				0.0%	0.0%	0.0%	0.0%	50.0%	50.0%	50.0%	100.0%	--	--	--	--	--	--	--	--
Air Conditioning	--				0.0%	0.0%	0.0%	0.0%	45.0%	45.0%	55.0%	100.0%	--	--	--	--	--	--	--	--
Contract Asst. - Canal	--				0.0%	0.0%	0.0%	0.0%	0.0%	0.0%	100.0%	100.0%	--	--	--	--	--	--	--	--
Building Exterior	--				0.0%	0.0%	0.0%	0.0%	60.0%	60.0%	40.0%	100.0%	--	--	--	--	--	--	--	--
Doors - Automatic	1,929,680				0.0%	0.0%	0.0%	0.0%	95.0%	95.0%	5.0%	100.0%	--	--	--	--	1,833,196	1,833,196	96,484	1,929,680
Electrical	0				0.0%	0.0%	0.0%	0.0%	0.0%	100.0%	100.0%	100.0%	--	--	--	--	--	--	--	--
Cont Asst Non-Assum - Landscaping	--				0.0%	0.0%	0.0%	0.0%	0.0%	0.0%	100.0%	100.0%	--	--	--	--	--	--	--	--
Gen Bldg Repr & Renov	--				0.0%	0.0%	0.0%	0.0%	50.0%	50.0%	50.0%	100.0%	--	--	--	--	--	--	--	--
DBED Compliance Fee (GSA MOU Elevator Svc)	524,000				0.0%	0.0%	0.0%	0.0%	77.0%	77.0%	23.0%	100.0%	--	--	--	--	403,480	403,480	120,520	524,000
<b>TOTAL CONTRACT SERVICES</b>	<b>\$33,776,891</b>				<b>21.3%</b>	<b>5.2%</b>	<b>17.1%</b>	<b>0.0%</b>	<b>32.1%</b>	<b>75.7%</b>	<b>24.3%</b>	<b>100.0%</b>	<b>\$7,189,511</b>	<b>\$1,744,060</b>	<b>\$5,792,478</b>	<b>\$0</b>	<b>\$10,856,409</b>	<b>\$25,582,458</b>	<b>\$8,194,432</b>	<b>\$33,776,890</b>

**ALLOCATION OF OPERATING AND DEBT SERVICE COSTS BY COST CENTER WORKSHEET**  
**Terminal Rental Rate Calculation Model**  
**Miami-Dade County Aviation Department**  
**Miami International Airport**  
**FY 2017-18**

	<b>Direct Current Expenses</b>	<b>Direct Current Expense Allocation %</b>
<b>G&amp;A ALLOCATION BASIS</b>		
International Concourse	\$16,337,388	4.9%
Domestic Baggage Claim	1,771,117	0.5%
Outbound Baggage Makeup	5,882,340	1.8%
Screening	9,970,730	3.0%
Terminal Rent	174,595,786	51.8%
<b>Total Terminal</b>	<b>\$208,557,361</b>	<b>61.9%</b>
Non-Terminal	165,424,050	
Less Other Management Contracts	(36,944,233)	
<b>Net Non-Terminal</b>	<b>\$128,479,817</b>	<b>38.1%</b>
<b>G&amp;A Allocation Basis</b>	<b>\$337,037,178</b>	<b>100.0%</b>

<b>MANAGEMENT AGREEMENTS DETAIL</b>	
HOTEL	\$8,153,182
AIRPORT PARKING	9,654,603
BAGGAGE STORAGE	--
IAMI - CLUBS	937,337
TOP OF THE PORT	0
ALLIED AVIATION FUELING	5,740,111
MIDFIELD FUELING	2,048,067
SHUTTLE	7,539,890
<b>SUBTOTAL</b>	<b>\$34,073,190</b>
JANITORIAL N&K, UNICCO, VISTA	36,342,311
SMARTE CARTE FIS	0
QASI-BAGGAGE STORAGE	0
<b>TOTAL</b>	<b>\$70,415,501</b>



**APPENDIX B TAB**

**CUTE / CUSS  
Exhibit Reference  
FY 2017-18**

*Appendix B*

<u><i>Exhibit Name</i></u>	<u><i>Exhibit #</i></u>
<b>Maintenance Costs</b>	<b>1</b>
• Maintenance Cost Allocation	
• Training Cost Allocation	
• Telecom Charges	
<b>General Statistics</b>	<b>2</b>
• Ticket Counter Hours	
• Terminal Costs per Sq. Ft. (Class I, III & IV)	
• Terminal Sq. Ft. (Class I, III & IV)	
<b>Equipment Inventory by Location</b>	<b>3</b>
<b>CUSS (Common Use Self Service) Rates</b>	<b>4</b>
<b>CUTE Back-wall Display Rates</b>	<b>5</b>

**Exhibit 1  
FY 2018 CUTE Maintenance Expense Allocation**

	<b>FY 2018 Budget</b>
<b>Equipment Costs</b>	
Core Room Hardware/Servers	\$0

<b>Maintenance costs</b>		
<u>Contractors Expense</u>		
	<b>FY 2018 Budget</b>	<b>Monthly Expense</b>
SITA (Year 5 of 7)	\$4,389,465	\$365,789
AirIT (Displays Only)--2 components		
Warranty/Replacement	\$100,000	\$8,333
O & M	175,000	14,583
<b>Total</b>	<b>\$275,000</b>	<b>\$22,917</b>
Telecom Charges per port	\$144	

<b>Allocation of Maintenance Expenses</b>			
<u>SITA Contract</u>			
	<b>%</b>	<b>O&amp;M Units</b>	<b>O&amp;M Expense</b>
Infrastructure	10.0%		\$438,946
Other	90.0%		
Gates	24.8%	603	1,088,242
Ticket Counters (includes BMU & rech units)	62.7%	1,525	2,752,188
VIP lounges (including Club America)	0.3%	8	14,438
Training	1.3%	32	128,295
Back Office (includes Operations)	0.3%	7	12,633
CUSS	0.6%	14	25,266
<b>Total</b>	<b>90.0%</b>	<b>2,189</b>	<b>\$4,460,009</b>

<b>Training Cost Allocation</b>			
	<b>O&amp;M Units</b>	<b>% Alloc.</b>	<b>Cost Alloc.</b>
Gates	603	28.2%	\$36,218
Tkt. Ctrs.	1,525	71.4%	91,596
VIP lounges	8	0.4%	481
<b>Total</b>	<b>2,136</b>	<b>100.0%</b>	<b>\$128,295</b>

<u>AirIT Contract</u>	<b>Unit Value</b>	<b>%</b>	<b>O&amp;M Units</b>	<b>O&amp;M Expense</b>
<i>(Allocated to Common Use Displays only)</i>				
LCD Backwall Display Monitor	\$1,976	52.5%	398	\$144,314
LED Dynamic Signage	1,405	37.3%	398	102,671
Video Display Extenders	150	4.0%	398	10,958
Digital Video Controller	234	6.2%	398	17,058
Subtotal	\$3,764	100.0%		\$275,001
Less: LED Dyn. Sign.*				(102,671)
<b>Total</b>				<b>\$172,330</b>

\* Costs recovered through Terminal cost center charges, not CUTE.

<b>Telecom Charges</b>			
<b>Number of Required Ports</b>	<b># of Ports</b>	<b># of Locations</b>	<b>Charge per Location</b>
Gates	1.0	211	\$30,384
Ticket Counters	1.0	383	55,152
Recheck Counters	1.0	15	2,160
CUSS Kiosks	1.0	7	1,008
<b>Total</b>		<b>616</b>	<b>\$88,704</b>

**Exhibit 2  
FY 2018 CUTE General Statistics**

<b>Ticket Counter (TC) Hour Calculation</b>		<b>FY 2018</b>
# of TC hours per day per unit	[a]	4,095
# of TC positions w/ BMU	[b]	383
# of TC positions w/o BMU	[c]	349
# of days per year	[d]	360
Ticket Counter Hours w/ BMU	[=a*b*d]	565,000
Ticket Counter Hours w/o BMU	[=a*c*d]	514,000

<b>Terminal Cost per Square Foot (from ldg fee model)</b>		
	<b>FY2017</b>	<b>FY 2018</b>
Class I	\$86.94	\$88.18
Class III (for Training Room costs)	\$86.94	\$88.18
Class IV	\$43.47	\$44.09

<b>Class I CUTE Terminal Space Wksht</b>		
	<b>FY2017</b>	<b>FY 2018</b>
Total Class I Space (from ldg fee model)	46,041	45,978
Less Exempt Carrier space:		
LAN-TAM ticket counter space (est. 32 pos.)	(1,920)	(1,680)
AA ticket counter space**	(10,177)	(10,177)
CAL ticket counter space**	(444)	(444)
LU ticket counter space**	(53)	(53)
DL ticket counter space**	(1,547)	(1,667)
	<b>31,900</b>	<b>31,957</b>

\*\* Reflects Class I ticket counter space noted on carriers's monthly invoice for th line item expense.

<b>Class III CUTE Terminal Space Wksht</b>		
	<b>FY2017</b>	<b>FY 2018</b>
MDAD CUTE Training Room Sq Ft	800	800

<b>Class IV CUTE Terminal Space Wksht</b>		
<b>Central/North Terminal</b>	<b>Carrousel</b>	<b>Square Ft</b>
	41	3,845
	42	5,270
Continental Airlines - Carrousel #42	(42)	(5,270)
	43	5,931
	45	5,049
	46	5,687
	47	4,005
	<b>Interline</b>	<b>21,644</b>
	50	2,795
	51	3,663
	52	4,686
	54	2,224
	62	6,326
<b>Central/North Terminal - Subtotal</b>		<b>65,855</b>
<b>South Terminal</b>		
South Terminal - Sort Piers		46,791
South Terminal - BMU (CC-J, 1st Fl)		6,662
Delta Airilnes - Sort Piers		0
<b>South Terminal - Subtotal</b>		<b>53,453</b>
Delta Airilnes - Sort Piers		(5,011)
Delta Airilnes - Sort Piers (eff 3/1/11)		0
<b>South Terminal - Total</b>		<b>48,442</b>
<b>Total Class 4 BMU sq ft</b>		<b>114,297</b>

Source: MDAD Technical Support Division

**Exhibit 3  
Total Inventory  
CUTE - FY 2018 Projected Budget and Rates**

Location	Equipment Location/Quantity											CUTE Back Office (Includes Operations)	Total CUTE Equipment	CUSS Units
	Ticket Counter	Recheck	Gates	BMU (Includes Curbside)	Club America	VIP Lounge	Int'l Baggage	Ticket Counters and Gates Total	Infra-structure Training	Common Use CUTE Total				
<b>Equipment Device</b>														
CPU	383	15	211	13	--	4	--	626	19	645	4	649	7	
Standard Keyboard	361	2	88	--	--	1	1	453	2	455	--	455	--	
Industrial Keyboard	--	--	--	--	--	--	--	--	--	--	--	--	--	
Monitor	382	15	205	13	--	4	--	619	13	632	3	635	7	
Boarding Pass Printer - ATB	353	1	73	--	--	--	--	427	--	427	--	427	--	
Bag Tag Printer - BTP	349	1	19	--	--	--	--	369	--	369	--	369	--	
Boarding Gate Reader - BGR	--	--	95	--	--	--	--	95	--	95	--	95	--	
Document Scanner - MSR	--	--	--	--	--	--	--	--	--	--	--	--	--	
Document Printer - DCP	19	--	65	9	--	2	--	95	3	98	3	101	--	
<b>TOTAL</b>	<b>1,847</b>	<b>34</b>	<b>756</b>	<b>35</b>	<b>--</b>	<b>11</b>	<b>1</b>	<b>2,684</b>	<b>37</b>	<b>2,721</b>	<b>10</b>	<b>2,731</b>	<b>14</b>	

# of O&M Units	Ticket Counter	Recheck	Gates	BMU (Includes Curbside)	Club America	VIP Lounge	Int'l Baggage	Ticket Counters and Gates Total	Infra-structure Training	Common Use CUTE Total	CUTE Back Office (Includes Operations)	Total CUTE Equipment	CUSS Units	Total
CPU	383	15	211	13	--	4	--	626	19	645	4	649	7	656
Standard Keyboard	--	--	--	--	--	--	--	--	--	--	--	--	--	--
Industrial Keyboard	--	--	--	--	--	--	--	--	--	--	--	--	--	--
Monitor	382	15	205	13	--	4	--	619	13	632	3	635	7	642
Boarding Pass Printer - ATB	353	1	73	--	--	--	--	427	--	427	--	427	--	427
Bag Tag Printer - BTP	349	1	19	--	--	--	--	369	--	369	--	369	--	369
Boarding Gate Reader - BGR	--	--	95	--	--	--	--	95	--	95	--	95	--	95
Document Scanner - MSR	--	--	--	--	--	--	--	--	--	--	--	--	--	--
Document Printer - DCP	--	--	--	--	--	--	--	--	--	--	--	--	--	--
<b>TOTAL</b>	<b>1,467</b>	<b>32</b>	<b>603</b>	<b>26</b>	<b>--</b>	<b>8</b>	<b>--</b>	<b>2,136</b>	<b>32</b>	<b>2,168</b>	<b>7</b>	<b>2,175</b>	<b>14</b>	<b>2,189</b>

Note: O&M units are a subset of total inventory; they reflect the items maintained by the service contractor as part of its contract with MDAD.

1. Sources:

- Ticket Counters and Rechecks - Resource Manager MDAD Properties Inventory
- Gates, BMU, Club America, VIP, Int'l Baggage, Training - MDAD/SITA list
- Backoffice - MDAD IT Department

**Exhibit 4**  
**Miami International Airport**  
**FY2018 CUSS RATES**  
**CUSS RATES EFFECTIVE OCT. 2017**

Pricing Category		Total Cost	# of Units	Per Unit Expense	Annual Amortization Cost (1)	Annual Per Unit	Monthly Per Unit
						[a]	[a] ÷ 12
<b><u>Capital Costs--CUSS UNIT (Hardware/Software)</u></b>							
In Ticket Counter	[b]	\$0	36	\$0.00	\$0.00	\$0.00	\$0.00
Stand Alone	[c]	\$0	26	\$0.00	\$0.00	\$0.00	\$0.00
Class I Terminal Rental Costs - Stand Alone (2)	[d]			\$529.08	n/a	\$529.08	\$44.09
Current Expense Allocation (O&M Costs) (3)	[e]	\$25,266	62	\$407.52	n/a	\$407.52	\$33.96
Telecom Port Charge						\$144.00	\$12.00
TOTAL COSTS - In Ticket Counter	[b+e]					\$407.52	\$45.96
TOTAL COSTS - Stand Alone	[c+d+e]					\$936.60	\$90.05

n/a = not applicable

(1) Amortization charge based upon useful life of 3 yrs @ 6%.

(2) Applies to Stand Alone units only. Each Stand Alone unit includes 6 square feet of Class I space multiplied by the current Class I terminal rental rate.

For FY2018 Class I terminal rental rate per square foot = **\$88.18**

(3) Current Expense amount is based on CUSS's allocation of the annual contract with SITA.



Exhibit 5  
CUTE Backwall Display Charges  
FY 2018

<b>Backwall Maximum Charge Calculation</b>
--

Backwall Display O&M costs	\$172,330
Ticket Counter Hours	565,000
Backwall Hourly Rate	<b>\$0.31</b>
Hours per Day	12
Days per Month	30
Positions per Display	2
Monthly Max. Backwall Charge - (CUTE Position)	<b>\$50.00</b>
Annual Backwall Charge per Position (Monthly Max. x 12 mo.)	<b>\$600.00</b>
Annual Backwall Charge per Display (Monthly Max. x 2 x 12 mo.)	<b>\$1,200.00</b>

## APPENDIX C

MIAMI INTERNATIONAL AIRPORT - TRAFFIC REPORT

FISCAL YEAR ENDED: SEPTEMBER 30, 2017

INTERNATIONAL*	DEPLANED	ENPLANED	TOTAL	FISCAL YEAR 10/15 - 09/16	% CHG OVR 10/15 - 09/16
PASSENGERS	10,965,374	10,469,975	21,435,349	21,324,385	0.52
FREIGHT-TONS	1,107,189	818,144	1,925,333	1,898,348	1.42
MAIL-TONS	5,047	6,774	11,821	14,631	-19.21
TOTAL CARGO-TONS	1,112,236	824,917	1,937,154	1,912,979	1.26
COMMERCIAL AIRCRAFT MVMТ	99,956	91,276	191,232	195,451	-2.16
LANDED WEIGHT (1,000 LBS)			22,723,364	23,243,509	-2.24
ARRIVING PASSENGERS & CREW REQUIRING FEDERAL INSP.			10,879,979	10,958,306	-0.71
SEATS	13,535,420	12,962,242	26,497,662	26,992,001	-1.83

DOMESTIC **	DEPLANED	ENPLANED	TOTAL	FISCAL YEAR 10/15 - 09/16	% CHG OVR 10/15 - 09/16
PASSENGERS	11,190,241	11,132,819	22,323,060	23,577,368	-5.32
FREIGHT-TONS	172,363	120,380	292,743	280,253	4.46
MAIL-TONS	14,295	11,812	26,107	26,374	-1.01
TOTAL CARGO-TONS	186,658	132,191	318,850	306,627	3.99
COMMERCIAL AIRCRAFT MVMТ	103,712	112,216	215,928	217,950	-0.93
LANDED WEIGHT (1,000 LBS)			14,266,146	14,683,385	-2.84
SEATS	12,290,196	12,861,840	25,152,036	26,078,131	-3.55

COMBINED TOTALS	DEPLANED	ENPLANED	TOTAL	FISCAL YEAR 10/15 - 09/16	% CHG OVR 10/15 - 09/16
PASSENGERS	22,155,615	21,602,794	43,758,409	44,901,753	-2.55
FREIGHT-TONS	1,279,552	938,523	2,218,076	2,178,601	1.81
MAIL-TONS	19,342	18,586	37,928	41,005	-7.51
TOTAL CARGO-TONS	1,298,894	957,109	2,256,003	2,219,606	1.64
COMMERCIAL AIRCRAFT MVMТ	203,668	203,492	407,160	413,401	-1.51
LANDED WEIGHT (1,000 LBS)			36,989,510	37,926,894	-2.47
SEATS	25,825,616	25,824,082	51,649,698	53,070,132	-2.68

AIRCRAFT OPERATIONS (LANDINGS PLUS TAKEOFFS) FAA TOWER DATA

AIR CARRIER	354,151				
AIR TAXI	35,859				
GENERAL AVIATION	17,675			FISCAL YEAR	% CHG OVR
MILITARY	1,157			10/15 - 09/16	10/15 - 09/16
TOTAL	408,842			416,920	-1.94

FREIGHT = FREIGHT PLUS EXPRESS. TOTAL CARGO = FREIGHT PLUS MAIL

\*TO AND FROM POINTS OUTSIDE U.S. JURISDICTION

\*\*TO AND FROM POINTS WITHIN U.S. JURISDICTION

\*\*\*THIS NUMBER DOES NOT INCLUDE CREW TOTALS FOR MARCH 09 THRU SEPTEMBER 09

MIAMI-DADE AVIATION DEPARTMENT: P.O.BOX 526624, MIAMI, FL. 33152

# Finance & Strategy Group:

## Financial Planning & Performance Analysis Division



P.O. Box 526624  
Miami, Florida 33152  
[www.miami-airport.com](http://www.miami-airport.com)

