

MIAMI-DADE AVIATION DEPARTMENT

RATES, FEES & CHARGES

FISCAL YEAR 2021

Finance and Strategy Group:
Financial Planning and
Performance Analysis Division
Miami - Florida



**MIAMI-DADE AVIATION DEPARTMENT
 RATES, FEES AND CHARGES FOR FISCAL YEAR 2021
 TABLE OF CONTENTS**

1. SUMMARY

Summary of Airline Charges.....	1
Airline Cost per Enplaned Passenger	2
Airline Rates and Charges Methodology.....	3
Residual Landing Fee	3
Terminal Rentals.....	4
Terminal User Fees.....	5

2. AIRSIDE

Landing Fee Calculation	7
Aircraft Parking Fees.....	8
Overtime Parking	8
Premium Charges	8
Major Maintenance	8
Cargo Aircraft Parking Position Fees.....	9
Derelict or Non-Operating Aircraft.....	9
Fees for Charter Airlines	9
VIP Ramp Escort	9
Handling by FBO	10
Handling by Authorized Ground Handler	10
Handling by Maintenance Repair Overhaul (MRO) Entity	10
Ground Support Charges	11
Pre-Conditioned Air Fee.....	11
MDAD Loading Bridge Fee	11
MDAD VDGS (Visual Docking Guidance System) Fee.....	11
MDAD Stair Truck Usage Fee	11
Aircraft Escort Fee.....	11
Delivery Vehicles or Non-Passenger Vehicle Escort Fee.....	11
Vehicle Escort for VIP Pickup at General Aviation Aircraft.....	11
Fuel Stop Fees	11
General Aviation Center (GAC) Facility Fee	11
Activity Fees by Aircraft Type.....	12a-e

3. TERMINAL

Airline Activity Based Fees	13
Preferential Gate Use Fee	13
Concourse Use Fee	13
Baggage Claim Fee.....	13
Screening Use Fee	13
International Facilities Use Fee	13
Terminal Rental Rates	14
Average (Class III) Terminal Rental Rates.....	14
Weighted Rental Rates	14
CUTE Rates (Common Use Terminal Equipment)	15
CUTE Gate Rates	15
Ticket Counter Usage Fee	15
CUTE Dynamic Signage (Back-wall Display)	15
CUTE Back-office / Operations / Educational Equipment	15
Manual CUTE Ticket Counter Rates.....	15
Miscellaneous CUTE Charges.....	16
CUTE Charge Based on Departing Seat.....	16
CUSS Charges (Common Use Self-Service).....	16
CCTV Charges (Closed-Circuit Television).....	16
CUTE Rate Summary and Prior Year Comparison	17

TABLE OF CONTENTS (continued)

4. LANDSIDE

Public and Employee Parking 18

 Public Parking 18

 Standard Rates..... 18

 Valet Parking 18

 Parking Space Reservation..... 18

 Employee Parking..... 19

 Employee Parking Decals 19

 Motorcycle Parking Decals..... 19

 Long-Term Parking Magnetic Cards..... 19

 Contractor Parking..... 19

 Towed Vehicles 19

Ground Transportation Fees 20

 Mobile Food Truck Vendor Fee 21

 Taxicab Operation Fee..... 21

 Ground Transportation Annual Permit Renewal Fee..... 21

 Ground Transportation Permit Late Renewal Fee 21

Authority to Revise or Adjust Building Rental Rates 21

Land Rental and Apron Paving Rates 22

Building Rental Rates (Miami International Airport) 23

Loading Dock..... 28

Utility Rates 28

Trailer Parking & Modular Units 28

Automobile Parking 28

Antenna Installation 28

Land Zone Map (Zones 1 – 5, 7)..... 30

Land Zone Map (Zone 6) 31

5. FUEL FARM

Fuel Flowage Fees and Calculation Explanation..... 32

6. GENERAL AVIATION

General Aviation Airport Fees and Charges..... 33

 Operational Closure Fee 33

 Aerial Advertising Fee..... 33

 Aircraft Parking at General Aviation Airports..... 33

 Conference Room Rental Fee (Miami Executive and Miami-Opa-Locka Executive Airports)..... 33

 Off-Road Vehicle Parking Fee at Training & Transition Airport..... 33

 Fuel Flowage Fee at General Aviation Airports 33

 Training & Transition Approach Fee..... 33

 AOA (Aircraft Operating Area) Decal for Commercial Vehicles and Equipment 33

 AOA Decal for Privately Owned Vehicles and Equipment..... 33

 AOA Decal Replacement Fee for Vehicles and Equipment..... 33

 AOA Decal Late Application Fee..... 33, 40

 Building Rental Rates (Miami-Opa-Locka Executive Airport - OPF) 34

 Building Rental Rates (Miami Executive Airport - TMB) 35

 Building Rental Rates (Miami Homestead General Aviation Airport – X51)..... 36

TABLE OF CONTENTS (continued)

7. TELECOMMUNICATIONS

Telecommunication Fees..... 37

 Wireless Service Providers..... 37

 Cable Television (CATV) Recovery Fee..... 37

 Coaxial Cable Recovery Fees..... 37

 Wireless Data Port with Internet Access Fee..... 37

 Wireless Network Access Fee for Multiple Users and Proprietary Tenants..... 37

 Offsite FIDS Rate..... 37

 Network Port Costs..... 37

 Equipment Rental Costs..... 37

STS (Shared Tenant Services) Fees..... 38

8. MISCELLANEOUS

Miscellaneous Fees and Charges..... 39

 Opportunity Fee for Third Party Vendors..... 39

 Penalty Fee for Employing Unpermitted Service Vendors..... 39

 Miscellaneous Air Carrier Fees..... 40

 Disruptive Passenger Fee..... 40

 Ground Service Equipment (GSE) Impoundment Fee..... 40

 Aircraft Handling Chock Fee..... 40

 Employee (MDAD Tenant) ID Badge Fees..... 40

 Employee Identification Badge Fee..... 40

 Lost or Unaccounted Employee ID Badge Fee..... 40

 Failure to Notify and Return Terminated Employee ID Badge Fee..... 40

 TSA 5% Rule Violation Fee..... 40

 Fingerprinting Fee..... 40

 Airside Vehicle Decal, Training Decal and Decal/Permit Replacement Fees..... 40

 AOA Decals..... 40

 AOA Decals (Late Renewal, Lost or Unaccounted)..... 40

 AOA Driver Training..... 40

 AOA Movement Area Training..... 40

 Loading Bridge Training..... 40

 AOA Decal/Permit Replacement Fee..... 40

 AOA Decal Late Application Fee..... 33, 40

 Into-Plane Fueling Recommended Fees (Non-Commercial Aircraft)..... 40

 Airline VIP Clubs..... 40

 Opportunity Fee..... 40

 Concession Fee..... 40

 Airspace Evaluation..... 41

 Preliminary and Final Airspace Letter of Determination..... 41

 Variance Application Fee (Airport Zoning Regulations)..... 41

 Letter of Determination Fee (Land Use Zoning Analysis)..... 41

 MDAD Technical Reviews and Written Comments..... 42

 Cell Towers and Other Structures Under 200 Feet Above Mean Sea Level..... 42

 Request for Written Comments..... 42

 Request for Written Comments – Revised Plans..... 42

 Development Impact Committee or Equivalent Large-Scale Hearing Application..... 42

 Permissible Crane (or Equipment) Height Determination..... 42

 Permissible Crane (or Equipment) Height Determination–Additional Coordinates..... 42

 Request for New Letter of Determination Due to Expiration..... 42

 Passenger Facility Charge (PFC)..... 42

TABLE OF CONTENTS (continued)

Other Fees 43

 Auditorium Use Fee (Miami International Airport) 43

 Conference Room Use Fee (Miami International Airport – Non Terminal) 43

 Consular Lounge Annual Membership..... 43

 Consular Lounge Rental Fee for Non-Member Organizations..... 43

 Interfaith Chapel Fee 43

 Digital Media Sales Fee (Fixed)..... 43

 Digital Media Sales Fee (Per 1,000 Impressions)..... 43

 Electric Cart Registration Fee..... 43

 Electric Cart Lost Registration Fee..... 43

 Electric Cart Late Registration Fee..... 43

 Late Revenue Reporting Fee 43

 Wheelchair Lift Fee 43

 Security Violation Fee 43

 Permit Application Fee for Provider of Goods and Services..... 43

 Permit Violation Fee..... 43

 Tenants Failure to Disclose Vendors, Sub-tenants, Assignees, Contractors or
Sub-contractors 43

 Permittee’s Failure to Disclose is Customers 43

 Interest Charged on any Under-reported or Non-reported Revenue..... 44

 Aircraft Demolition Fee..... 44

 Baggage or Property Impound Fees 44

 Background Check Fee..... 44

 Animal Inspection Facility User Fees..... 44

 Average Electrical Consumption per Kilowatt Hour..... 44

 Airside Enforcement Processing Fee..... 44

 Violation Fees for Airport Concessionaires and Tenants 45

 Violation of Permitted Use of a Location 45

 Failure to Maintain Required Hours of Operation 45

 Failure to Submit Required Documentation and Reports 45

 Failure to Comply with Request for Mandatory Response 45

 Unauthorized Advertising 45

 Failure to Maintain Premises in a Clean State 45

 Failure to Maintain Pricing or Conduct Surveys..... 45

 Installation of Unapproved Items..... 45

 Violation of Other Terms and Conditions..... 45

APPENDICES

Appendix A

Terminal Rental Calculation—Allocation of Expenses by Cost Center..... A-1 to A-6

Appendix B

CUTE / CUSS Exhibits B-1 to B-6

Appendix C

Airport Traffic Report C-1

SUMMARY TAB

**SUMMARY OF AIRLINE CHARGES
 MIAMI INTERNATIONAL AIRPORT
 FY 2020-21**

Rate Type	Adopted FY 2018-19	Adopted FY 2019-20	Adopted FY 2020-21	Variance Adopted vs. FY 2020		
				Amount	Percentage	
AIRFIELD						
Landing Fees	\$1.62	\$1.62	<i>\$1.62</i>	(\$0.00)	0.0%	
Loading Bridge	\$35.00	\$35.00	<i>\$35.00</i>	\$0.00	0.0%	
Preconditioned Air:						
Narrow-body	\$18.34	\$18.34	<i>\$18.34</i>	\$0.00	0.0%	
Wide-body	40.58	40.58	<i>40.58</i>	-	0.0%	
Jumbo-body	54.15	54.15	<i>54.15</i>	-	0.0%	
TERMINAL						
Preferential Gate Use Annual Fee (per gate)	n/a	n/a	Common Use n/a	Preferential Gate Use \$666,161.83	n/a	n/a
Domestic Arriving Seat Charge						
Concourse Use Concourse Fee (1)	\$4.26	\$2.40	<i>\$4.91</i>	n/a	\$2.51	104.6%
Domestic Baggage Claim Fee	1.56	0.87	<i>0.92</i>	<i>0.92</i>	0.05	5.7%
	\$5.82	\$3.27	<i>\$5.83</i>	<i>\$0.92</i>	<i>\$2.56</i>	78.3%
Domestic Departing Seat Charge						
Common Use Concourse Fee (1)	\$4.26	\$2.40	<i>\$4.91</i>	n/a	\$2.51	104.6%
Security Screening Fee	0.49	0.85	<i>1.44</i>	<i>1.44</i>	0.59	69.4%
Outbound Baggage Fee - O&M (2)	0.84	0.84	<i>1.25</i>	<i>1.25</i>	0.41	48.8%
Outbound Baggage Fee - Capital (5)	0.36	0.31	<i>0.50</i>	<i>0.50</i>	0.19	61.3%
	\$5.95	\$4.40	<i>\$8.10</i>	<i>\$3.19</i>	<i>\$3.70</i>	84.1%
International Arriving Seat Charge						
Concourse Use Fee	\$4.26	\$0.00	<i>\$0.00</i>	<i>\$0.00</i>	\$0.00	0.0%
International Facilities Fee	2.36	10.66	<i>12.43</i>	<i>12.43</i>	1.77	16.6%
	\$6.62	\$10.66	<i>\$12.43</i>	<i>\$12.43</i>	<i>\$1.77</i>	16.6%
International Departing Seat Charge						
Common Use Concourse Fee (1)	\$4.26	\$2.40	<i>\$4.91</i>	n/a	\$2.51	104.6%
Security Screening Fee	0.49	0.85	<i>1.44</i>	<i>1.44</i>	0.59	69.4%
Outbound Baggage Fee - O&M (2)	0.84	0.84	<i>1.25</i>	<i>1.25</i>	0.41	48.8%
Outbound Baggage Fee - Capital (5)	0.36	0.31	<i>0.50</i>	<i>0.50</i>	0.19	61.3%
	\$5.95	\$4.40	<i>\$8.10</i>	<i>\$3.19</i>	<i>\$3.70</i>	84.1%
Terminal Rent						
Class I	\$89.88	\$95.00	<i>\$88.75</i>	<i>\$88.75</i>	(\$6.25)	-6.6%
Class II	134.82	142.50	<i>133.13</i>	<i>133.13</i>	(9.37)	-6.6%
Class III	89.88	95.00	<i>88.75</i>	<i>88.75</i>	(6.25)	-6.6%
Class IV	44.94	47.50	<i>44.38</i>	<i>44.38</i>	(3.12)	-6.6%
Class V	22.47	23.75	<i>22.19</i>	<i>22.19</i>	(1.56)	-6.6%
Class VI	89.88	95.00	<i>88.75</i>	<i>88.75</i>	(6.25)	-6.6%
CUTE Rates						
Infrastructure Fee per Departing Seat (3)	\$0.02	\$0.00	<i>\$0.00</i>	<i>\$0.00</i>	\$0.00	0.0%
Gate Usage Fee per Departing Seat	0.19	0.21	<i>0.28</i>	<i>0.28</i>	0.07	33.3%
CUTE Equipment Rental (4)	\$0.49	\$0.54	<i>\$0.68</i>	<i>\$0.68</i>	\$0.14	25.7%
Class I Rental (4)	0.35	0.36	<i>0.41</i>	<i>0.41</i>	0.05	13.6%
Class IV Rental (4)	0.82	0.76	<i>1.00</i>	<i>1.00</i>	0.24	30.9%
Common Use Display (4)	0.03	0.03	<i>0.02</i>	<i>0.02</i>	(0.01)	-17.2%
Ticket Counter Usage Fee (4)	\$1.68	\$1.69	<i>\$2.11</i>	<i>\$2.11</i>	\$0.42	24.7%

n/a = not applicable

- (1) This fee applies to users of Common Use Gates and to other Airlines (besides the Preferential Gate Use Airline) use of Preferential Use Gates.
- (2) American Airlines is excluded from this charge because this airline maintains its own baggage system.
- (3) This fee was eliminated effective Oct. 1, 2018 per the 2018 Airline Use Agreement.
- (4) CUTE equipment rental, space rental and backwall display charges are based on departing seats effective Oct. 1, 2014.
- (5) The capital recovery portion of Outbound Baggage is charged to all airlines.

NOTE: Per the 2018 Airline Use Agreement, Non-signatory Airlines that are not a participant in MDAD's Aviation User Credit Program (AUCP) shall be required to pay an additional 50% premium on all Aviation Fees. Non-signatory Airlines with an AUCP will pay an additional 50% premium only on the landing fee charge.

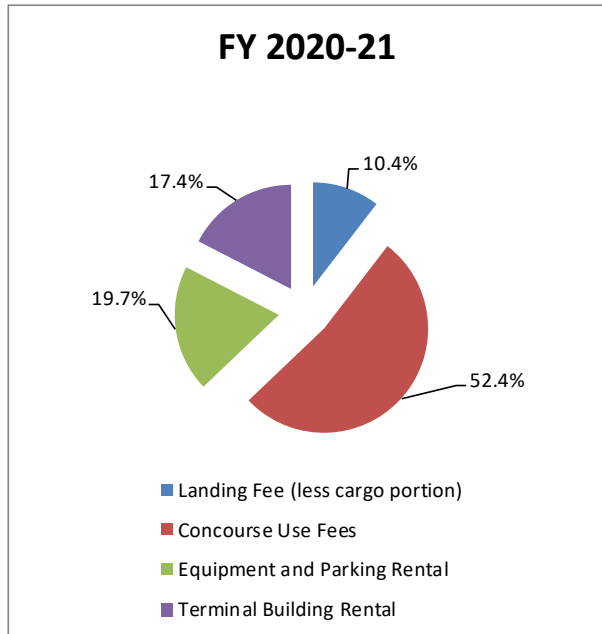
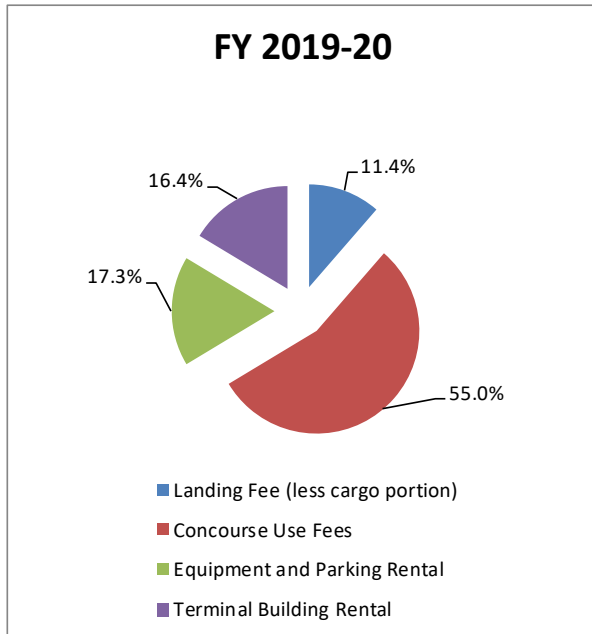
FINAL

AIRLINE COST PER ENPLANED PASSENGER
Miami-Dade County Aviation Department
Miami International Airport
FY 2020-21

		<u>FY 2019-20</u>	<u>FY 2020-21</u>
Landing Fee (less cargo portion)		\$49,656,721	\$41,334,139
Concourse Use Fees		240,073,380	207,526,306
Equipment and Parking Rental		75,340,143	77,880,241
Terminal Building Rental		<u>71,463,104</u>	<u>68,990,408</u>
Total Airline Payments	[A]	\$436,533,348	\$395,731,094
Enplaned Passengers	[B]	23,075,000	15,950,000
Airline Cost per Enplaned Pax.	[A/B]	\$18.92	\$24.81
Airline Cost per Enplaned Pax per Traffic Engineers (a)		\$19.52	\$21.79

Notes:

(a) FY 2019-20 and FY 2020-21 represent the forecasted airline cost per enplaned passenger contained in Exhibit E-3 of the 2019 Bond Official Statement.



AIRLINE RATES AND CHARGES METHODOLOGY AT MIAMI INTERNATIONAL AIRPORT

RESIDUAL LANDING FEE

- MDAD employs an “**airport system residual**” formula to calculate MIA landing fees.
- MDAD calculates landing fees effective October 1 based upon budget estimates and, if necessary, adjusts landing fees effective April 1 based upon revised budget estimates.
- Each year MDAD calculates MIA landing fees in such a way as to ensure that revenues from landing fees together with Revenues from all other sources will be at least sufficient to meet the requirements of the Rate Covenant as defined in Section 501 of the Amended and Restated Trust Agreement.

Landing Fee Calculation

[A] Revenue Requirement

- + Net Principal and Interest Requirements (net of Passenger Facility Charge revenue contribution)
- + 20 percent coverage margin (based on Net Principal & Interest)
- + Current Expenses
- + Changes in operating reserve
- + Deposit to Bond Reserve Account
- + Deposit to Reserve Maintenance Fund
- + Debt service on commercial paper
- + Debt service on other indebtedness
- + Required deposits for commercial paper and other indebtedness
- Deposit from Bond Service Account (interest income)
- = **Total Revenue Requirement**

[B] Revenue Credits

- Aviation Fees
- Terminal Rentals
- Structures and Other Rentals
- Commercial Revenues
- Other Revenues
- General Aviation Airports
- Deposit from Improvement Fund
- = **Total Revenue Credits**

[A – B] = Amount to be Recovered from Landing Fees

- Revenues for September landings
- = **Net Amount to be Recovered from Landing Fees/Landing Fee Requirement**

Divided by Total Landed Weight (11 months October thru August)

= Landing Fee Rate

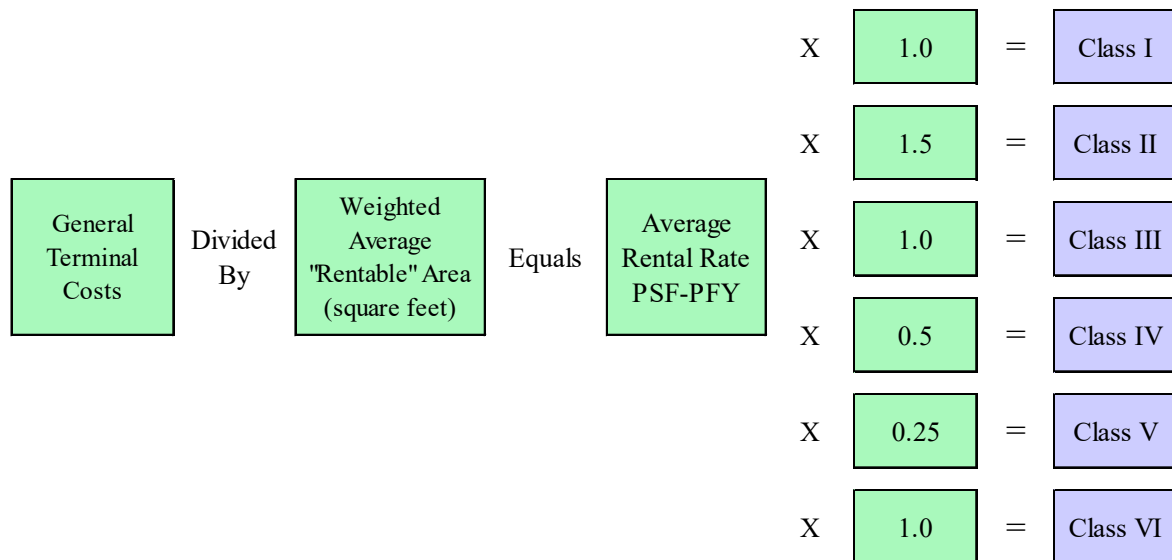
TERMINAL RENTALS

- MDAD calculates terminal rents using a cost recovery approach under an equalized rate methodology. This means that rates for space are uniform within a category regardless of when the facility was built. (Concourse space within Concourses D and H have the same rental rates as similar categories of space within Concourses F and G.)
- Terminal rental rates and terminal user fees are effective October 1st of each fiscal year based upon the Annual Budget and are not subject to adjustment at mid-year.
- Terminal rental rate is calculated using a weighted rate based upon space classification, which is determined based on the type of space being utilized.

Classification of Terminal Space

- Class I** all Airline regular and special (such as first class or priority) passenger service facilities, including, but not necessarily limited to, ticket counter space and interline counters.
- Class II** Airline club rooms and all air-conditioned office space in the main Terminal Building, including the office tower, baggage service rooms, exclusive Airline passenger check in areas, and future ticketing offices.
- Class III** all other air-conditioned operating space, including, but not necessarily limited to, baggage claim areas, hold rooms, Federal Inspection Services (FIS) related areas, all passenger circulation areas, post-security screening, group rooms, employee canteens, concourse office space and the like.
- Class IV** all enclosed or semi-enclosed, non-air-conditioned operating space, including, but not necessarily limited to, baggage make-up rooms, equipment and parts storage, and the like.
- Class V** leased space created as part of the building shadow line, included in the Terminal Building.
- Class VI** all other leasable revenue producing and concession space. Class VI shall specifically include space leased by Airlines for concession-type activities. A single rental rate for this class will not be established, provided that the overall revenues produced for this class shall average per square foot at least the rate established for Class III space.
- Class VII** non-rentable (support) space that constitutes the passenger circulation pre-security screening areas and Aviation Department support space. (The cost of non-rentable space is effectively apportioned to rentable areas and charged through Terminal Building rents and user fees.)

Terminal Rental Rate Weighted Space Calculation



Terminal User Fees

- **Preferential Gate Use Fee (Qualified Signatory Carriers Only)**

The Preferential Gate Use Fee is calculated to recover the space costs of certain preferential-use areas of the Terminal Building. The space costs associated with the Preferential Gate Use Fee is calculated by multiplying the Class III rental rate by the square footage of (1) gate holdroom areas and (2) domestic secure circulation areas in the concourses that are used by arriving and departing domestic passengers as well as departing international passengers. The Preferential Gate Use Fee is computed by dividing holdroom and domestic secure circulation space costs by the total number of active gates. This amount is then divided by 12 (months) to determine the fixed monthly charge for each preferential gate granted. For further details and qualification requirements, please refer to Tab H3 (Terminal Building Rents and User Fees) of the 2018 Airline Use Agreement.

- **Concourse Use Fee**

The Concourse Use Fee is calculated to recover the space costs of certain common-use areas of the Terminal Building. The space costs associated with the Concourse Use Fee is calculated by multiplying the Class III rental rate by the square footage of (1) gate holdroom areas and (2) domestic secure circulation areas in the concourses that are used by arriving and departing domestic passengers as well as departing international passengers. The Concourse Use Fee is computed by dividing the rate base by the total number of common-use domestic (including international pre-cleared) arriving and total (both international and domestic) departing aircraft seats.

- **Domestic Baggage Claim Fee**

The Domestic Baggage Claim Fee is calculated to recover the sum of the equivalent rent for the domestic baggage claim area plus the costs to acquire, maintain, and operate domestic baggage claim equipment. The Domestic Baggage Claim Fee is computed by dividing the rate base by the number of arriving domestic aircraft seats, including the international pre-cleared seats.

- **Security Screening Fee**

The Security Screening Fee recovers the sum of the equivalent rent for the passenger and baggage security screening areas plus the cost to acquire and maintain security screening equipment at passenger checkpoints and operation expenses incurred by the Aviation Department for checkpoint security functions. The Security Screening Fee is computed by dividing the rate base by the number of departing aircraft seats.

- **International Facilities Fee**

The International Facilities Fee includes (1) annual operating and maintenance costs of the international portion of the E-Satellite and the North Terminal trains, (2) the square footage of the international sterile circulation areas in the concourses that are used by arriving international passengers, multiplied by the Class III rental rate, (3) the square footage of the processing areas for the federal inspection of arriving international passengers and the international baggage claim area multiplied by the Class III rental rate, (4) the annual operation and maintenance cost of the international baggage claim systems, and (5) the square footage of the non-air-conditioned inbound international baggage area multiplied by the Class IV rate. The International Facilities Fee is computed by dividing the sum of these costs by the number of arriving international aircraft seats. International Facilities Fees are not applicable to pre-cleared International flights.

- **Outbound Baggage Fee**

1. *Current Expense Component.*

The rate base for the Current Expense component of the Outbound Baggage Fee is calculated as the sum of the direct Current Expense and allocated indirect Current Expense related to the operation and maintenance of outbound baggage makeup systems in the Terminal Building. (There are no space costs associated with this fee.) The rate for this component of the Outbound Baggage Fee is computed by dividing the rate base by total departing aircraft seats, except for the departing aircraft seats of Airlines that operate and maintain an outbound baggage system at MIA. (As of January 1, 2018, American Airlines is the only Airline that self-maintains an outbound baggage system at MIA, but in the future the excluded class may include any other Airline that self-maintains an outbound baggage system.)

2. *Capital Cost Recovery Component.*

The rate base for the capital cost recovery component of the Outbound Baggage Fee is calculated as the capital costs of the outbound baggage systems. (There are no space costs associated with this fee.) The rate for this component of the Outbound Baggage Fee is computed by dividing the rate base by total departing aircraft seats.

Terminal User Fees Calculation

USE FEE	Equals	RATE BASE	Divided By	ACTIVITY
Concourse - (Preferential)		Class III rental rate x Square footage areas for holdrooms and domestic sterile passenger circulation		All active gates
Concourse - (Common Use)		Class III rental rate x Square footage areas for holdrooms and domestic sterile passenger circulation		All common use departing seats and common use domestic arriving seats
Domestic Baggage Claim		Class III rental rate x Domestic baggage claim space + Allocated operating expenses (including equipment)		Arriving domestic seats
Security Screening		Class III & IV rental rate x Security screening space + Allocated operating expenses (including equipment)		Departing Seats
International Facilities		Class III rental rate x Federal Inspection Services related space + Allocated operating expenses		Arriving International Seats
Outbound Baggage - O & M		Allocated operating expenses		Departing seats (excluding seats from Airlines that self-maintain e.g. AA)
Outbound Baggage - Capital		Allocated capital/debt service expenses		Departing seats

AIRSIDE TAB

**LANDING FEE CALCULATION
MIAMI INTERNATIONAL AIRPORT
For Fiscal Years Ended September 30,**

Landing Fee Calculation	Budget Calculation		Variance	% Chg.
	FY 2019-20	FY 2020-21		
Airport System Requirement:				
Principal & Interest Requirement	\$372,002,014	\$374,874,590	\$2,872,576	0.8%
Improvement Fund Contribution	0	(19,500,000)	(19,500,000)	100.0%
Less: PFC Revenue	(82,000,000)	(110,000,000)	(28,000,000)	34.1%
Net P & I Requirement	\$290,002,014	\$245,374,590	(\$44,627,424)	-15.4%
Times Coverage Factor	<u>1.20</u>	<u>1.20</u>		
P&I Requirement Plus Coverage	\$348,002,417	\$294,449,508	(\$53,552,909)	-15.4%
Current Expenses	546,033,171	524,285,589	(21,747,582)	-4.0%
Increase/(Decrease) in O&M Reserve	4,942,909	-	(4,942,909)	-100.0%
Deposit from Bond Service Account (Interest)	(3,000,000)	(3,000,000)	0	0.0%
Deposit to Reserve Maintenance Fund	15,000,000	15,000,000	0	0.0%
Subordinate Debt Payment	25,297,584	22,302,789	(2,994,795)	-11.8%
Total Requirement [A]	\$936,276,081	\$853,037,886	(\$83,238,195)	-8.9%
Less: Revenues Net of Landing Fees				
Aviation Fees	\$315,413,523	\$286,701,171	(\$28,712,352)	-9.1%
Terminal Rentals	83,704,971	119,909,733	36,204,763	43.3%
Structure & Other Rentals	68,440,945	92,300,968	23,860,023	34.9%
Commercial Revenues	280,198,318	209,853,550	(70,344,768)	-25.1%
Other Revenues	23,533,488	24,007,921	474,433	2.0%
G/A Airports	10,067,015	10,067,015	0	0.0%
Transfer from Improvement Fund (Deposit to RF)	92,000,000	58,000,000	(34,000,000)	-37.0%
Total Revenues [B]	\$873,358,260	\$800,840,358	(\$72,517,902)	-8.3%
Amount Recovered from Landing Fees [A-B] [C]	\$62,917,822	\$52,197,528	(\$10,720,294)	-17.0%
Less: Sept. collections (prior yr) from Ldg. Fees [D]	\$4,592,881	\$4,527,228	(65,654)	-1.4%
Net Amt Recovered from Landing Fees [C-D] [E]	\$58,324,940	\$47,670,300	(\$10,654,640)	-18.3%
Estimated Landed Weight in 1,000 lb. units (1) [F]	35,950,000	29,390,000	(6,560,000)	-18.2%
Landing Fee Rate (per 1,000 lb. unit) [E/F] [G]	\$1.62	\$1.62	(\$0.00)	0.0%
Total Landing Fee Revenue [G*F+D]	\$62,917,822	\$52,197,528	(\$10,720,294)	-17.0%

(1) Represents estimated landed weight for 11 months.

**AIRCRAFT PARKING FEES
MIAMI INTERNATIONAL AIRPORT
Effective October 1, 2020**

(Policy last updated October 1, 2008 and is subject to change)

Regular Aircraft Parking – Passenger aircraft using terminal gates, hardstands or remote positions will accrue parking fees if any of the following conditions exist:

- (A) Aircraft that park on a hardstand or remote position will be charged after a two (2) hour grace period. Subsequent daily charges will apply every 24 hours.
- (B) Aircraft that park at a terminal gate will be charged the first day parking charge after a four (4) hour grace period. Subsequent daily charges will apply every 24 hours.

Regular aircraft parking charges will reflect (24 hour) daily rates for 1 to 5 days, 6 to 15 days, 16 to 30 days, and 31+ days. Minimum charge for M-1 type aircraft will be **\$15.00 per day** for 1 to 5 days and increase thereafter. Aircraft parking rates for 1 to 5 days are calculated by multiplying the ground rental rate by aircraft shadow (length x wingspan) then dividing by 365 (days per year). This rate is then increased by a factor of 1.5 for the 6 to 15 day rate; a factor of 2 for the 16 to 30 day rate and a factor of 4 for the 31+ day rate. An aircraft take-off and landing will allow the parking rate to revert back to day one (1). No aircraft parking at MIA shall exceed forty-five (45) consecutive days without express written consent from the Assistant Director of Airside Operations, or an Airside Division designee.

Overtime Parking - Aircraft and/or ground service equipment (GSE) that do not depart or are not removed from the terminal gates, hardstands and cargo spots at the agreed upon time, and cause another aircraft to hold for that gate, hardstand or cargo spot, or block its departure from that gate, hardstand or cargo spot, or causes a gate or spot change will be charged for overtime parking.

Overtime parking charges are assessed at the rate of \$100.00 per 30 minutes or fraction thereof in excess of one hour for deplanements, one hour for enplanements, and two hours for an arrival/departure turnaround.

Premium Charges – Non-signatory Airlines that have separately complied with MDAD’s Aviation User Credit Program (AUCP) requirements and Airlines that have diverted flight operations into MIA, shall be required to pay landing fees equal to 150% of such fees, as provided in Article 7(C) of the 2018 Airline Use Agreement (2018 AUA). Non-signatory Airline means any Airline that is not a Signatory Airline to the 2018 AUA. Any Non-signatory Airline not participating in the AUCP will be charged an additional 50% on **all** Aviation Fees.

Major Maintenance - Aircraft on regular aircraft parking that are performing major maintenance will be charged a major maintenance fee separately from the storage parking fee.

Aircraft requiring major maintenance (other than regular turn-around maintenance) while parked at common use aircraft parking positions will be charged \$300.00 per 24-hour period.

AIRCRAFT PARKING FEES (continued)

Cargo Aircraft Parking Position Fees—payable whenever an aircraft uses a designated MDAD cargo position. Fees commence on the arrival of the aircraft at the cargo position. Charges are listed below.

- Aircraft 60,000 lbs and under in landed weight
 - First 4 hours \$60.00
 - Each additional hour \$15.00
 - 24 hour maximum \$360.00

- Aircraft between 60,001 and 270,000 lbs in landed weight
 - First 4 hours \$120.00
 - Each additional hour \$30.00
 - 24 hour maximum \$720.00

- Aircraft in excess of 270,000 lbs in landed weight
 - First 4 hours \$200.00
 - Each additional hour \$60.00
 - 24 hour maximum \$1,400.00

Derelict or Non-Operating Aircraft - Fee of up to \$500.00 per day for each day a tenant or airport user parks or stores a derelict or non-operating aircraft of any size or parts thereof on airport premises beyond the permitted sixty (60) day period.

Fees for Charter Airlines

VIP Ramp Escort Fee – MIA provides a premium service whereby passengers are escorted directly to or from the steps of the aircraft parked at an airfield location. The charter operator is responsible for providing the passenger ground transportation vehicle, which must be escorted onto the airfield by MDAD personnel.

All of the following fees apply to charter operators providing this service to their customers:

1. An escort/attendant fee associated with the mandatory escort of vehicle(s) to be used for transporting passengers on the airfield. Fee will be \$150.00 for each hour (2-hour minimum) to cover escort vehicles' operating costs and labor (escort/attendant).
2. A fee for the use of MDAD owned stair truck (if used) as listed in the Ground Support Charges schedule (page 12).
3. Landing Fee (for arriving charters) as shown on the Summary of Airline Charges (page 2) schedule.
4. Inspection Fees: charter operator will be responsible for arranging separately and paying for, applicable services required by Federal agencies including the TSA (Transportation Security Administration) for departing flights, and FIS (Federal Inspection Services) for arriving international flights.

HANDLING BY FBO (Fixed Base Operator)

A charter operator may contract with an FBO to perform various ground handling services. Such services are provided on the premises of the FBO. In addition to landing fees and other charges that the FBO may be required to collect for the use of various Airport facilities and services, the FBO may establish its own charges for services rendered. Charter operators should contact the FBO for all charges.

HANDLING BY AUTHORIZED GROUND HANDLER

Authorized ground handlers compete for the services of charter and scheduled airline operators at MIA. Such ground handlers utilize the existing terminal facilities (check-in counters and gates) to process passengers, baggage and the aircraft. Charter and scheduled airline operators contract directly with such ground handlers. In addition to landing fees and other charges that the ground handler may be required to collect for the use of various Airport facilities and services, the ground handler may establish its own charges for services rendered. Any interested charter and scheduled airline operators should contact the ground handler for all charges.

HANDLING BY MAINTENANCE REPAIR OVERHAUL (MRO) ENTITY

For the privilege of providing maintenance, repair, and services for aircraft at MIA, MRO's are responsible for payment to MDAD of all landing and aviation fees applicable to aircraft during the time the aircraft is being serviced by an MRO from the time it arrives at MIA until the time it departs, except to the extent that the MRO user is a Signatory Airline to the 2018 Airline Use Agreement and will therefore pay such fees directly from its own account.

SEE SCHEDULE AT THE END OF THIS SECTION FOR LANDED WEIGHT AND AIRCRAFT PARKING COST BY AIRCRAFT TYPE

**GROUND SUPPORT CHARGES
MIAMI INTERNATIONAL AIRPORT
Effective October 1, 2020**

Pre-conditioned Air All aircraft using a gate equipped with preconditioned air will be charged preconditioned air fees. The use for the aircraft preconditioned air supply equipment will continue to be assessed to all airlines using the system by aircraft type. The rates will remain as follows:

Narrow Body (N)	\$18.34 for any use (per arrival – no time limit)
Wide Body (W)	\$40.58 for any use (per arrival – no time limit)
Jumbo Body (J)	\$54.15 for any use (per arrival – no time limit)

MDAD account customers will report all preconditioned air system uses directly to the MDAD Finance Division on a monthly basis. The Finance Division will supply the correct form for reporting the usage.

MDAD Loading Bridges - \$35.00 per arrival and/or \$35.00 per departure. All aircraft using additional loading bridges (more than one) will be charged \$35.00 per arrival and/or \$35.00 per departure for each additional loading bridge used.

MDAD VDGS (Visual Docking Guidance System) Fee - \$12.00 per Aircraft Arrival will be charged for gates equipped with VDGS aircraft arrival system. This charge will be assessed in addition to the standard loading bridge fee. Gates not equipped with VDGS will be charged the standard loading bridge fee.

Stair Truck - \$100.00 per hour Note: This fee is only waived for use on United States military aircraft.

Escort Fee for Aircraft at all GA Airports (including Vehicle) - \$100.00 per escort

Escort Fee for Delivery Vehicles or Non-Passenger Vehicles at all GA Airports - \$10.00 per escort

Escort Fee - Vehicle Escort for VIP Pickup at General Aviation Aircraft - \$20.00 per escort

Fuel Stop Fees

- Terminal Gate – Aircraft using a terminal gate for a fuel stop will be charged a terminal fuel stop fee equivalent to a concourse fee, and a one-way loading bridge fee for a maximum of two (2) hours. Any additional time will incur overtime parking fees.
- Remote Locations and General Aviation Center (GAC) – A fuel stop fee equivalent to a one-day parking charge per aircraft type will be charged at remote locations and the General Aviation Center for aircraft refueling operations up to a maximum of two (2) hours. Any additional parking time will incur parking fees.

General Aviation Center (GAC) Facility Fee

- GAC Domestic Fee – The fee shall be equal to the base concourse use fee for each inbound and each outbound domestic operation performed by commercial operators carrying passengers for hire that use the domestic portion of the GAC facility.
- GAC International Fee – The fee shall be equal to the base concourse use fee and international facility fee for each international arrival, and a base concourse fee for each international departure performed by commercial operators carrying passengers for hire that use the international portion of the GAC facility.

MIAMI-DADE AVIATION DEPARTMENT
AVIATION CHARGES AT MIAMI INTERNATIONAL AIRPORT
Effective October 1, 2020 - September 30, 2021
 Based on \$1.62 per 1,000 Pounds of Nominal Gross Landed Weight

Aircraft Type	Size	Landing Weight	Landing Charges	All Airlines Domestic Arrival	All Departing CUTE Gates	CUTE RENTAL FEE	All Airlines Departure	All Airlines International Arrival	International Departure AA Only	GAC International Arrival	GAC DOMESTIC C Arrival/Dep	GAC/Remote Fuel Stop	Terminal Fuel Stop	Square Footage	1-5 Days	6-15 Days	16-30 Days	31+ Days
A319NEO	N	141,000	228.42	746.24	35.84	270.08	1,036.80	1,591.04	876.80	1,591.04	628.48	109.00	663.48	13,098	109.00	163.50	218.00	436.00
A320NEO	N	149,000	241.38	1,084.38	52.08	392.46	1,506.60	2,311.98	1,274.10	2,311.98	913.26	122.00	948.26	14,632	122.00	183.00	244.00	488.00
A321NEO	N	175,000	283.50	1,142.68	54.88	413.56	1,587.60	2,436.28	1,342.60	2,436.28	962.36	144.00	997.36	17,228	144.00	216.00	288.00	576.00
A220-100	N	112,000	181.44	641.30	30.80	232.10	891.00	1,367.30	763.50	1,367.30	540.10	110.00	575.10	13,187	110.00	165.00	220.00	440.00
A220-300	N	127,000	205.74	787.05	37.80	284.85	1,093.50	1,678.05	924.75	1,678.05	662.85	122.00	697.85	14,605	122.00	183.00	244.00	488.00
A300-100/200/300	W	293,000	474.66	1,474.99	70.84	533.83	2,049.30	3,144.79	1,733.05	3,144.79	1,242.23	216.00	1,277.23	25,875	216.00	324.00	432.00	864.00
A300-600/600R	W	309,000	500.58	1,556.61	74.76	563.37	2,162.70	3,318.81	1,828.95	3,318.81	1,310.97	218.00	1,345.97	26,096	218.00	327.00	436.00	872.00
A310-200	W	261,000	422.82	1,183.49	56.84	428.33	1,644.30	2,523.29	1,390.55	2,523.29	996.73	184.00	1,031.73	22,046	184.00	276.00	368.00	736.00
A310-300	W	272,000	440.64	1,119.36	53.76	405.12	1,555.20	2,386.56	1,315.20	2,386.56	942.72	184.00	977.72	22,046	184.00	276.00	368.00	736.00
A318	N	124,000	200.88	583.00	28.00	211.00	810.00	1,243.00	685.00	1,243.00	491.00	96.00	526.00	11,538	96.00	144.00	192.00	384.00
A319	N	136,000	220.32	752.07	36.12	272.19	1,044.90	1,603.47	883.65	1,603.47	633.39	104.00	668.39	12,401	104.00	156.00	208.00	416.00
A319 WINGLET	N	136,000	220.32	752.07	36.12	272.19	1,044.90	1,603.47	883.65	1,603.47	633.39	109.00	668.39	13,098	109.00	163.50	218.00	436.00
A320	N	142,000	230.04	897.82	43.12	324.94	1,247.40	1,914.22	1,054.90	1,914.22	756.14	115.00	791.14	13,785	115.00	172.50	230.00	460.00
A320 WINGLET	N	142,000	230.04	897.82	43.12	324.94	1,247.40	1,914.22	1,054.90	1,914.22	756.14	121.00	791.14	14,481	121.00	181.50	242.00	484.00
A321	N	161,000	260.82	1,125.19	54.04	407.23	1,563.30	2,398.99	1,322.05	2,398.99	947.63	136.00	982.63	16,221	136.00	204.00	272.00	544.00
A321 WINGLET	N	161,000	260.82	1,125.19	54.04	407.23	1,563.30	2,398.99	1,322.05	2,398.99	947.63	144.00	982.63	17,228	144.00	216.00	288.00	576.00
A330-200	W	402,000	651.24	1,544.95	74.20	559.15	2,146.50	3,293.95	1,815.25	3,293.95	1,301.15	319.00	1,336.15	38,181	319.00	478.50	638.00	1,276.00
A330-200F FREIGHTER	W	413,000	669.06	-	-	-	-	-	-	-	-	319.00	35.00	38,181	319.00	478.50	638.00	1,276.00
A330-300	W	413,000	669.06	1,568.27	75.32	567.59	2,178.90	3,343.67	1,842.65	3,343.67	1,320.79	345.00	1,355.79	41,331	345.00	517.50	690.00	1,380.00
A330-800	W	411,000	665.82	1,498.31	71.96	542.27	2,081.70	3,194.51	1,760.45	3,194.51	1,261.87	339.00	1,296.87	40,530	339.00	508.50	678.00	1,356.00
A330-900	W	422,000	683.64	1,737.34	83.44	628.78	2,413.80	3,704.14	2,041.30	3,704.14	1,463.18	367.00	1,498.18	43,890	367.00	550.50	734.00	1,468.00
A340-200	W	407,000	659.34	1,440.01	69.16	521.17	2,000.70	3,070.21	1,691.95	3,070.21	1,212.77	322.00	1,247.77	38,570	322.00	483.00	644.00	1,288.00
A340-300	W	423,000	685.26	1,737.34	83.44	628.78	2,413.80	3,704.14	2,041.30	3,704.14	1,463.18	345.00	1,498.18	41,297	345.00	517.50	690.00	1,380.00
A340-500	W	543,000	879.66	1,958.88	94.08	708.96	2,721.60	4,176.48	2,301.60	4,176.48	1,649.76	387.00	1,684.76	46,370	387.00	580.50	774.00	1,548.00
A340-600	W	585,000	947.70	1,731.51	83.16	626.67	2,405.70	3,691.71	2,034.45	3,691.71	1,458.27	430.00	1,493.27	51,435	430.00	645.00	860.00	1,720.00
A350-1000	W	515,000	834.30	1,906.41	91.56	689.97	2,648.70	4,064.61	2,239.95	4,064.61	1,605.57	433.00	1,640.57	51,759	433.00	649.50	866.00	1,732.00
A350-800	W	425,000	688.50	1,632.40	78.40	590.80	2,268.00	3,480.40	1,918.00	3,480.40	1,374.80	354.00	1,409.80	42,387	354.00	531.00	708.00	1,416.00
A350-900	W	452,000	732.24	1,649.89	79.24	597.13	2,292.30	3,517.69	1,938.55	3,517.69	1,389.53	392.00	1,424.53	46,860	392.00	588.00	784.00	1,568.00
A380-800	J	871,000	1,411.02	2,990.79	143.64	1,082.43	4,155.30	6,376.59	3,514.05	6,376.59	2,518.83	523.00	2,553.83	62,618	523.00	784.50	1,046.00	2,092.00
A380F FREIGHTER	J	942,000	1,526.04	-	-	-	-	-	-	-	-	523.00	35.00	62,618	523.00	784.50	1,046.00	2,092.00
A400M	N	272,000	440.64	-	-	-	-	-	-	-	-	173.00	35.00	20,720	173.00	259.50	346.00	692.00
AN-12	N	122,000	197.64	-	-	-	-	-	-	-	-	114.00	35.00	13,603	114.00	171.00	228.00	456.00
AN-124	J	729,000	1,180.98	2,040.50	98.00	738.50	2,835.00	4,350.50	2,397.50	4,350.50	1,718.50	432.00	1,753.50	51,736	432.00	648.00	864.00	1,728.00
AN-2	C	15,000	24.30	52.47	2.52	18.99	72.90	111.87	61.65	111.87	44.19	20.00	79.19	2,427	20.00	30.00	40.00	80.00
AN-22	W	500,000	810.00	-	-	-	-	-	-	-	-	335.00	35.00	40,147	335.00	502.50	670.00	1,340.00
AN-225	J	1,213,000	1,965.06	-	-	-	-	-	-	-	-	656.00	35.00	78,546	656.00	984.00	1,312.00	2,624.00
AN-24	C	46,000	74.52	291.50	14.00	105.50	405.00	621.50	342.50	621.50	245.50	62.00	280.50	7,396	62.00	93.00	124.00	248.00
AN-26	C	53,000	85.86	244.86	11.76	88.62	340.20	522.06	287.70	522.06	206.22	62.00	241.22	7,396	62.00	93.00	124.00	248.00
AN-30	C	51,000	82.62	-	-	-	-	-	-	-	-	65.00	35.00	7,722	65.00	97.50	130.00	260.00
AN-32	C	57,000	92.34	303.16	14.56	109.72	421.20	646.36	356.20	646.36	255.32	62.00	290.32	7,436	62.00	93.00	124.00	248.00
AN-72 / AN-74	N	66,000	106.92	-	-	-	-	-	-	-	-	68.00	35.00	8,114	68.00	102.00	136.00	272.00
Astra SPX	C	21,000	34.02	46.64	2.24	16.88	64.80	99.44	54.80	99.44	39.28	25.00	74.28	3,047	25.00	37.50	50.00	100.00
ATL98 (CARVAIR)	N	64,000	103.68	-	-	-	-	-	-	-	-	57.00	35.00	6,867	57.00	85.50	114.00	228.00
ATR 42-300	C	36,000	58.32	244.86	11.76	88.62	340.20	522.06	287.70	522.06	206.22	50.00	241.22	5,000	50.00	75.00	100.00	200.00
ATR 42-320	C	36,000	58.32	268.18	12.88	97.06	372.60	571.78	315.10	571.78	225.86	50.00	260.86	6,005	50.00	75.00	100.00	200.00
ATR 42-500	C	40,000	64.80	268.18	12.88	97.06	372.60	571.78	315.10	571.78	225.86	50.00	260.86	6,005	50.00	75.00	100.00	200.00
ATR 42-600	C	41,000	66.42	291.50	14.00	105.50	405.00	621.50	342.50	621.50	245.50	51.00	280.50	6,075	51.00	76.50	102.00	204.00
ATR 72-200 / 210	C	47,000	76.14	384.78	18.48	139.26	534.60	820.38	452.10	820.38	324.06	66.00	359.06	7,903	66.00	99.00	132.00	264.00
ATR 72-500	C	49,000	79.38	373.12	17.92	135.04	518.40	795.52	438.40	795.52	314.24	66.00	349.24	7,903	66.00	99.00	132.00	264.00
ATR 72-600	C	50,000	81.00	408.10	19.60	147.70	567.00	870.10	479.50	870.10	343.70	67.00	378.70	8,010	67.00	100.50	134.00	268.00
B737 MAX7	N	146,000	236.52	804.54	38.64	291.18	1,117.80	1,715.34	945.30	1,715.34	677.58	115.00	712.58	13,806	115.00	172.50	230.00	460.00
B737 MAX8	N	153,000	247.86	1,002.76	48.16	362.92	1,393.20	2,137.96	1,178.20	2,137.96	844.52	128.00	879.52	15,340	128.00	192.00	256.00	512.00
B737 MAX9	N	164,000	265.68	1,037.74	49.84	375.58	1,441.80	2,212.54	1,219.30	2,212.54	873.98	137.00	908.98	16,402	137.00	205.50	274.00	548.00
B707	N	247,000	400.14	857.01	41.16	310.17	1,190.70	1,827.21	1,006.95	1,827.21	721.77	186.00	756.77	22,293	186.00	279.00	372.00	744.00
B717-200	N	103,000	166.86	641.30	30.80	232.10	891.00	1,367.30	763.50	1,367.30	540.10	97.00	575.10	11,582	97.00	145.50	194.00	388.00
B727-100	N	141,000	228.42	893.73	33.32	251.09	963.90	1,479.17	815.15	1,479.17	584.29	120.00	619.29	14,386	120.00	180.00	240.00	480.00
B727-200	N	155,000	251.10	874.50	42.00	316.50	1,215.00	1,864.50	1,027.50	1,864.50	736.50	138.00	771.50	16,546	138.00	207.00	276.00	552.00
B737-100	N	96,000	155.52	623.81	29.96	225.77	866.70	1,330.01	732.95	1,330.01	525.37	73.00	560.37	8,742	73.0			

MIAMI-DADE AVIATION DEPARTMENT
 AVIATION CHARGES AT MIAMI INTERNATIONAL AIRPORT
 Effective October 1, 2020 - September 30, 2021
 Based on \$1.62 per 1,000 Pounds of Nominal Gross Landed Weight

Aircraft Type	Size	Landing Weight	Landing Charges	All Airlines Domestic			All Departing CUTE		All Airlines RENTAL FEE	All Airlines International Departure	International Departure AA Only	GAC International Arrival	GAC DOMESTIC Arrival/Dep	GAC/Remote Fuel Stop	Terminal Fuel Stop	Square Footage	1-5 Days	6-15 Days	16-30 Days	31+ Days
				Arrival	Domestic	Gates	Arrival	Departure												
B737-800	N	147,000	238.14	932.80	44.80	337.60		1,296.00	1,988.80	1,096.00	1,988.80	785.60	122.00	820.60	14,606	122.00	183.00	244.00	488.00	
B737-800 WINGLET	N	147,000	238.14	932.80	44.80	337.60		1,296.00	1,988.80	1,096.00	1,988.80	785.60	127.00	820.60	15,206	127.00	190.50	254.00	508.00	
B737-900	N	158,000	255.96	1,049.40	50.40	379.80		1,458.00	2,237.40	1,233.00	2,237.40	883.80	130.00	918.80	15,555	130.00	195.00	260.00	520.00	
B737-900 WINGLET	N	158,000	255.96	1,049.40	50.40	379.80		1,458.00	2,237.40	1,233.00	2,237.40	883.80	136.00	918.80	16,224	136.00	204.00	272.00	544.00	
B747-100	J	575,000	931.50	2,291.19	110.04	829.23		3,183.30	4,884.99	2,692.05	4,884.99	1,929.63	379.00	1,964.63	45,383	379.00	568.50	758.00	1,516.00	
B747-100B/SR/SF	J	564,000	913.68	3,206.50	154.00	1,160.50		4,455.00	6,836.50	3,767.50	6,836.50	2,700.50	379.00	2,735.50	45,383	379.00	568.50	758.00	1,516.00	
B747-200	J	630,000	1,020.60	2,139.61	102.76	774.37		2,972.70	4,561.81	2,513.95	4,561.81	1,801.97	379.00	1,836.97	45,383	379.00	568.50	758.00	1,516.00	
B747-200 CF	J	630,000	1,020.60	1,422.52	68.32	514.84		1,976.40	3,032.92	1,671.40	3,032.92	1,198.04	379.00	1,233.04	45,383	379.00	568.50	758.00	1,516.00	
B747-200B	J	595,000	963.90	2,332.00	112.00	844.00		3,240.00	4,972.00	2,740.00	4,972.00	1,964.00	379.00	1,999.00	45,383	379.00	568.50	758.00	1,516.00	
B747-200C	J	621,000	1,006.02	1,422.52	68.32	514.84		1,976.40	3,032.92	1,671.40	3,032.92	1,198.04	379.00	1,233.04	45,383	379.00	568.50	758.00	1,516.00	
B747-300	J	564,000	913.68	2,355.32	113.12	852.44		3,272.40	5,021.72	2,767.40	5,021.72	1,983.64	379.00	2,018.64	45,383	379.00	568.50	758.00	1,516.00	
B747-300C	J	605,000	980.10	1,515.80	72.80	548.60		2,106.00	3,231.80	1,781.00	3,231.80	1,276.60	379.00	1,311.60	45,383	379.00	568.50	758.00	1,516.00	
B747-300SR	J	525,000	850.50	3,637.92	174.72	1,316.64		5,054.40	7,756.32	4,274.40	7,756.32	3,063.84	379.00	3,098.84	45,383	379.00	568.50	758.00	1,516.00	
B747-400	J	608,000	984.96	2,023.01	97.16	732.17		2,810.70	4,313.21	2,376.95	4,313.21	1,703.77	409.00	1,738.77	48,931	409.00	613.50	818.00	1,636.00	
B747-400C	J	611,000	989.82	2,337.83	112.28	846.11		3,248.10	4,984.43	2,746.85	4,984.43	1,968.91	409.00	2,003.91	48,931	409.00	613.50	818.00	1,636.00	
B747-400F FREIGHTER	J	666,000	1,078.92	-	-	-		-	-	-	-	-	409.00	35.00	48,931	409.00	613.50	818.00	1,636.00	
B747-8F FREIGHTER	J	763,000	1,236.06	-	-	-		-	-	-	-	-	469.00	35.00	56,183	469.00	703.50	938.00	1,876.00	
B747-8I PASSENGER	J	688,000	1,114.56	2,110.46	101.36	763.82		2,932.20	4,499.66	2,479.70	4,499.66	1,777.42	469.00	1,812.42	56,183	469.00	703.50	938.00	1,876.00	
B747-LCF	J	575,000	931.50	-	-	-		-	-	-	-	-	415.00	35.00	49,683	415.00	622.50	830.00	1,660.00	
B747SP	J	450,000	729.00	1,480.82	71.12	535.94		2,057.40	3,157.22	1,739.90	3,157.22	1,247.14	302.00	1,282.14	36,146	302.00	453.00	604.00	1,208.00	
B757-200	N	200,000	324.00	1,096.04	52.64	396.68		1,522.80	2,336.84	1,287.80	2,336.84	923.08	162.00	958.08	19,381	162.00	243.00	324.00	648.00	
B757-200 WINGLET	N	200,000	324.00	1,096.04	52.64	396.68		1,522.80	2,336.84	1,287.80	2,336.84	923.08	175.00	958.08	20,894	175.00	262.50	350.00	700.00	
B757-200PF FREIGHTER	N	210,000	340.20	-	-	-		-	-	-	-	-	162.00	35.00	19,381	162.00	243.00	324.00	648.00	
B757-300	N	224,000	362.88	1,241.79	59.64	449.43		1,725.30	2,647.59	1,459.05	2,647.59	1,046.83	186.00	1,080.83	22,293	186.00	279.00	372.00	744.00	
B757-300 WINGLET	N	224,000	362.88	1,241.79	59.64	449.43		1,725.30	2,647.59	1,459.05	2,647.59	1,046.83	201.00	1,080.83	24,033	201.00	301.50	402.00	804.00	
B767-200	W	272,000	440.64	1,370.05	65.80	495.85		1,903.50	2,921.05	1,609.75	2,921.05	1,153.85	208.00	1,188.85	24,851	208.00	312.00	416.00	832.00	
B767-200ER	W	300,000	486.00	1,370.05	65.80	495.85		1,903.50	2,921.05	1,609.75	2,921.05	1,153.85	208.00	1,188.85	24,851	208.00	312.00	416.00	832.00	
B767-300	W	300,000	486.00	1,253.45	60.20	453.65		1,741.50	2,672.45	1,472.75	2,672.45	1,055.65	235.00	1,090.65	28,145	235.00	352.50	470.00	940.00	
B767-300ER	W	320,000	518.40	1,294.26	62.16	468.42		1,798.20	2,759.46	1,520.70	2,759.46	1,090.02	235.00	1,125.02	28,145	235.00	352.50	470.00	940.00	
B767-300ER WINGLET	W	320,000	518.40	1,294.26	62.16	468.42		1,798.20	2,759.46	1,520.70	2,759.46	1,090.02	252.00	1,125.02	30,102	252.00	378.00	504.00	1,008.00	
B767-400ER	W	350,000	567.00	1,434.18	66.88	519.06		1,992.60	3,057.78	1,685.10	3,057.78	1,207.86	287.00	1,242.86	34,319	287.00	430.50	574.00	1,148.00	
B777-200/200B/200ER	W	470,000	761.40	1,591.59	78.44	576.03		2,211.30	3,393.39	1,870.05	3,393.39	1,340.43	349.00	1,375.43	41,778	349.00	523.50	698.00	1,396.00	
B777-200LR	W	492,000	797.04	1,509.97	72.52	546.49		2,097.90	3,219.37	1,774.15	3,219.37	1,271.69	372.00	1,306.69	44,476	372.00	558.00	744.00	1,488.00	
B777-300	W	524,000	848.88	1,988.03	95.48	719.51		2,762.10	4,238.63	2,338.85	4,238.63	1,674.31	405.00	1,709.31	48,456	405.00	607.50	810.00	1,620.00	
B777-300ER	W	554,000	897.48	2,034.67	97.72	736.39		2,826.90	4,338.07	2,390.65	4,338.07	1,713.59	431.00	1,748.59	51,558	431.00	646.50	862.00	1,724.00	
B777F FREIGHTER	W	575,000	931.50	-	-	-		-	-	-	-	-	372.00	35.00	44,476	372.00	558.00	744.00	1,488.00	
B777-8	W	542,000	878.04	1,900.58	91.28	687.86		2,640.60	4,052.18	2,233.10	4,052.18	1,600.66	452.00	1,635.66	54,044	452.00	678.00	904.00	1,808.00	
B777-9	W	587,000	950.94	2,034.67	97.72	736.39		2,826.90	4,338.07	2,390.65	4,338.07	1,713.59	497.00	1,748.59	59,472	497.00	745.50	994.00	1,988.00	
B787-10	W	445,000	720.90	1,883.09	90.44	681.53		2,616.30	4,014.89	2,212.55	4,014.89	1,585.93	369.00	1,620.93	44,184	369.00	553.50	738.00	1,476.00	
B787-8	W	380,000	615.60	1,801.47	86.52	651.99		2,502.90	3,840.87	2,116.65	3,840.87	1,517.19	307.00	1,552.19	36,689	307.00	460.50	614.00	1,228.00	
B787-9	W	425,000	688.50	1,789.81	85.96	647.77		2,486.70	3,816.01	2,102.95	3,816.01	1,507.37	339.00	1,542.37	40,582	339.00	508.50	678.00	1,356.00	
BAE 1000	C	25,000	40.50	87.45	4.20	31.65		121.50	186.45	102.75	186.45	73.65	23.00	108.65	2,765	23.00	34.50	46.00	92.00	
BAE 125 (ALL)	C	23,000	37.26	46.64	2.24	16.88		64.80	99.44	54.80	99.44	39.28	22.00	74.28	2,621	22.00	33.00	44.00	88.00	
BAE 125-800	C	23,000	37.26	46.64	2.24	16.88		64.80	99.44	54.80	99.44	39.28	22.00	74.28	2,621	22.00	33.00	44.00	88.00	
BAE 146-100	N	84,000	136.08	478.06	22.96	173.02		664.20	1,019.26	561.70	1,019.26	402.62	63.00	437.62	7,482	63.00	94.50	126.00	252.00	
BAE 146-200	N	85,000	137.70	495.55	23.80	179.35		688.50	1,056.55	582.25	1,056.55	417.35	68.00	452.35	8,178	68.00	102.00	136.00	272.00	
BAE 146-300	N	89,000	144.18	501.38	24.08	181.46		696.60	1,068.98	589.10	1,068.98	422.26	74.00	457.26	8,874	74.00	111.00	148.00	296.00	
BAE 32EP	C	16,000	25.92	110.77	5.32	40.09		153.90	236.17	130.15	236.17	93.29	21.00	128.29	2,454	21.00	31.50	42.00	84.00	
BAE 748 / HS 748	C	38,000	61.56	291.50	14.00	105.50		405.00	621.50	342.50	621.50	245.50	57.00	280.50	6,868	57.00	85.50	114.00	228.00	
BAE ATP	C	49,000	79.38	408.10	19.60	147.70		567.00	870.10	479.50	870.10	343.70	72.00	378.70	8,573	72.00	108.00	144.00	288.00	
BAE AVRO RJ100	N	89,000	144.18	501.38	24.08	181.46		696.60	1,068.98	589.10	1,068.98	422.26	74.00	457.26	8,874	74.00	111.00	148.00	296.00	
BAE AVRO RJ70	N	84,000	136.08	478.06	22.96	173.02		664.20	1,019.26	561.70	1,019.26	402.62	63.00	437.62	7,482	63.00	94.50	126.00	252.00	
BAE AVRO RJ85	N	85,000	137.70	495.55	23.80	179.35		688.50	1,056.55	582.25	1,056.55	417.35	68.00	452.35	8,178	68.00	102.00	136.00	272.00	
BEECH 400A	C	16,000	25.92	46.64	2.24	16.88		64.80	99.44	54.80	99.44	39.28	18.00	74.28	2,105	18.00	27.00	36.00	72.00	
BEECH 99	C	15,000	24.30	87.45	4.20	31.65														

MIAMI-DADE AVIATION DEPARTMENT
AVIATION CHARGES AT MIAMI INTERNATIONAL AIRPORT
Effective October 1, 2020 - September 30, 2021
Based on \$1.62 per 1,000 Pounds of Nominal Gross Landed Weight

Aircraft Type	Size	Landing Weight	Landing Charges	All Airlines		CUTE RENTAL FEE	All Airlines Departure	All Airlines International Arrival	International Departure AA Only	GAC		GAC		Terminal Fuel Stop	Square Footage	1-5 Days	6-15 Days	16-30 Days		31+ Days
				Domestic Arrival	Departing Cute Gates					International Arrival	International Arrival	C Arriv/Dep	Remote Fuel Stop					Days	Days	
Canadair CL-415	C	37,000	59.94	-	-	-	-	-	-	-	-	-	51.00	35.00	6,065	51.00	76.50	102.00	204.00	
Canadair CL-44D4	N	175,000	283.50	-	-	-	-	-	-	-	-	180.00	35.00	21,573	180.00	270.00	360.00	720.00		
Canadair CL-600s	C	33,000	53.46	69.96	3.36	25.32	97.20	149.16	82.20	149.16	58.92	37.00	93.92	4,398	37.00	55.50	74.00	148.00		
CASA 212/100/300/400	C	17,000	27.54	151.58	7.28	54.86	210.60	323.18	178.10	323.18	127.66	23.00	162.66	2,802	23.00	34.50	46.00	92.00		
CASA CN-235-300	C	32,000	51.84	204.05	9.80	73.85	283.50	435.05	239.75	435.05	171.85	50.00	206.85	6,035	50.00	75.00	100.00	200.00		
CESSNA 100 Series	M-1	15,000	24.30	23.32	1.12	8.44	32.40	49.72	27.40	49.72	19.64	15.00	54.64	1,800	15.00	22.50	30.00	60.00		
CESSNA 200 Series	M-1	15,000	24.30	34.98	1.68	12.66	48.60	74.58	41.10	74.58	29.46	15.00	64.46	1,800	15.00	22.50	30.00	60.00		
CESSNA 300-400	M-1	15,000	24.30	46.64	2.24	16.88	64.80	99.44	54.80	99.44	39.28	15.00	74.28	1,800	15.00	22.50	30.00	60.00		
Challenger 300	C	34,000	55.08	46.64	2.24	16.88	64.80	99.44	54.80	99.44	39.28	37.00	74.28	4,381	37.00	55.50	74.00	148.00		
Challenger 650	C	38,000	61.56	58.30	2.80	21.10	81.00	124.30	68.50	124.30	49.10	37.00	84.10	4,485	37.00	55.50	74.00	148.00		
Challenger 850	C	47,000	76.14	81.62	3.92	29.54	113.40	174.02	95.90	174.02	68.74	51.00	103.74	6,112	51.00	76.50	102.00	204.00		
Cirrus SR20/SR22	M-1	15,000	24.30	23.32	1.12	8.44	32.40	49.72	27.40	49.72	19.64	15.00	54.64	1,800	15.00	22.50	30.00	60.00		
Cirrus Vision Jet SF 50	C	15,000	24.30	34.98	1.68	12.66	48.60	74.58	41.10	74.58	29.46	15.00	64.46	1,800	15.00	22.50	30.00	60.00		
CITATION 680	C	27,000	43.74	46.64	2.24	16.88	64.80	99.44	54.80	99.44	39.28	34.00	74.28	4,020	34.00	51.00	68.00	136.00		
CITATION 680A LATITUDE	C	28,000	45.36	52.47	2.52	18.99	72.90	111.87	61.65	111.87	44.19	38.00	79.19	4,599	38.00	57.00	76.00	152.00		
CITATION JET CJ1	C	15,000	24.30	40.81	1.96	14.77	56.70	87.01	47.95	87.01	34.37	17.00	69.37	2,064	17.00	25.50	34.00	68.00		
CITATION JET CJ2	C	15,000	24.30	52.47	2.52	18.99	72.90	111.87	61.65	111.87	44.19	20.00	79.19	2,400	20.00	30.00	40.00	80.00		
CITATION JET CJ3	C	15,000	24.30	52.47	2.52	18.99	72.90	111.87	61.65	111.87	44.19	23.00	79.19	2,808	23.00	34.50	46.00	92.00		
CITATION JET CJ4	C	16,000	25.92	58.30	2.80	21.10	81.00	124.30	68.50	124.30	49.10	23.00	84.10	2,754	23.00	34.50	46.00	92.00		
Citation C560XL	C	19,000	30.78	64.13	3.08	23.21	89.10	136.73	75.35	136.73	54.01	24.00	89.01	2,885	24.00	36.00	48.00	96.00		
Citation 700 Longitude	C	34,000	55.08	69.96	3.36	25.32	97.20	149.16	82.20	149.16	58.92	43.00	93.92	5,106	43.00	64.50	86.00	172.00		
Citation I / II	C	15,000	24.30	46.64	2.24	16.88	64.80	99.44	54.80	99.44	39.28	17.00	74.28	2,049	17.00	25.50	34.00	68.00		
Citation III/IV/VII	C	20,000	32.40	52.47	2.52	18.99	72.90	111.87	61.65	111.87	44.19	25.00	79.19	2,969	25.00	37.50	50.00	100.00		
Citation V	C	15,000	24.30	46.64	2.24	16.88	64.80	99.44	54.80	99.44	39.28	21.00	74.28	2,552	21.00	31.50	42.00	84.00		
CITATION X	C	31,000	50.22	69.96	3.36	25.32	97.20	149.16	82.20	149.16	58.92	33.00	93.92	3,999	33.00	49.50	66.00	132.00		
CN-235-220	C	32,000	51.84	204.05	9.80	73.85	283.50	435.05	239.75	435.05	171.85	50.00	206.85	6,035	50.00	75.00	100.00	200.00		
CONVAIR 340/440/600	C	47,000	76.14	262.35	12.60	94.95	364.50	559.35	308.25	559.35	220.95	70.00	255.95	8,348	70.00	105.00	140.00	280.00		
CONVAIR 5800U	N	58,000	93.96	-	-	-	-	-	-	-	-	72.00	35.00	8,580	72.00	108.00	144.00	288.00		
CONVAIR CV240	C	40,000	64.80	250.69	12.04	90.73	348.30	534.49	294.55	534.49	211.13	57.00	246.13	6,874	57.00	85.50	114.00	228.00		
CONVAIR CV580	C	52,000	84.24	262.35	12.60	94.95	364.50	559.35	308.25	559.35	220.95	72.00	255.95	8,580	72.00	108.00	144.00	288.00		
CONVAIR CV640	C	52,000	84.24	262.35	12.60	94.95	364.50	559.35	308.25	559.35	220.95	72.00	255.95	8,580	72.00	108.00	144.00	288.00		
CS100	N	112,000	181.44	641.30	30.80	232.10	891.00	1,367.30	753.50	1,367.30	540.10	110.00	575.10	13,187	110.00	165.00	220.00	440.00		
CS300	N	127,000	205.74	787.05	37.80	284.85	1,093.50	1,678.05	924.75	1,678.05	662.85	122.00	697.85	14,605	122.00	183.00	244.00	488.00		
CURTISS C-46	C	46,000	74.52	361.46	17.36	130.82	502.20	770.66	424.70	770.66	304.42	69.00	339.42	8,251	69.00	103.50	138.00	276.00		
DC-10-10/15 Pax	W	363,000	588.06	1,760.66	84.56	637.22	2,446.20	3,753.86	2,068.70	3,753.86	1,482.82	237.00	1,517.82	28,311	237.00	355.50	474.00	948.00		
DC-10-30/40 Ftr	W	436,000	706.32	-	-	-	-	-	-	-	-	251.00	35.00	30,018	251.00	376.50	502.00	1,004.00		
DC-10-30/40 Pax	W	403,000	652.86	1,591.59	76.44	576.03	2,211.30	3,393.39	1,870.05	3,393.39	1,340.43	249.00	1,375.43	29,853	249.00	373.50	498.00	996.00		
DC-3 Pax	C	27,000	43.74	180.73	8.68	65.41	251.10	385.33	212.35	385.33	152.21	51.00	187.21	6,105	51.00	76.50	102.00	204.00		
DC-4 (C-54)	N	63,000	102.06	256.52	12.32	92.84	356.40	546.92	301.40	546.92	216.04	92.00	251.04	11,003	92.00	138.00	184.00	368.00		
DC-6B Pax	N	88,000	142.56	448.91	21.56	162.47	623.70	957.11	527.45	957.11	378.07	103.00	413.07	12,375	103.00	154.50	206.00	412.00		
DC-7	N	102,000	165.24	530.53	25.48	192.01	737.10	1,131.13	623.35	1,131.13	446.81	110.00	481.81	13,149	110.00	165.00	220.00	440.00		
DC-8-51/52/53	N	207,000	335.34	985.27	47.32	356.59	1,368.90	2,100.67	1,157.65	2,100.67	829.79	179.00	864.79	21,416	179.00	268.50	358.00	716.00		
DC-8-54 / 55	N	240,000	388.80	985.27	47.32	356.59	1,368.90	2,100.67	1,157.65	2,100.67	829.79	179.00	864.79	21,416	179.00	268.50	358.00	716.00		
DC-8-61/71	N	249,000	403.38	1,107.70	53.20	400.90	1,539.00	2,361.70	1,301.50	2,361.70	932.90	223.00	967.90	26,667	223.00	334.50	446.00	892.00		
DC-8-62/72	N	245,000	396.90	973.61	46.76	352.37	1,352.70	2,075.81	1,143.95	2,075.81	819.97	195.00	854.97	23,358	195.00	292.50	390.00	780.00		
DC-8-63/73	N	275,000	445.50	1,206.81	57.96	436.77	1,676.70	2,573.01	1,417.95	2,573.01	1,016.37	232.00	1,051.37	27,810	232.00	348.00	464.00	928.00		
DC-9-10 Pax	N	82,000	132.84	489.72	23.52	177.24	680.40	1,044.12	575.40	1,044.12	412.44	78.00	447.44	9,333	78.00	117.00	156.00	312.00		
DC-9-30 Pax	N	99,000	160.38	588.83	28.28	213.11	818.10	1,255.43	691.85	1,255.43	495.91	93.00	530.91	11,131	93.00	139.50	186.00	372.00		
DC-9-40 Pax	N	102,000	165.24	583.00	28.00	211.00	810.00	1,243.00	685.00	1,243.00	491.00	98.00	526.00	11,718	98.00	147.00	196.00	392.00		
DC-9-50 Pax	N	110,000	178.20	699.60	33.60	253.20	972.00	1,491.60	822.00	1,491.60	589.20	104.00	624.20	12,456	104.00	156.00	208.00	416.00		
De Havilland 114	M-1	15,000	24.30	81.62	3.92	29.54	113.40	174.02	95.90	174.02	68.74	15.00	103.74	1,800	15.00	22.50	30.00	60.00		
DHC-6 Twin Otter	M-1	15,000	24.30	116.60	5.60	42.20	162.00	248.60	137.00	248.60	98.20	15.00	133.20	1,800	15.00	22.50	30.00	60.00		
DHC-7 Dash 7	C	45,000	72.90	291.50	14.00	105.50	405.00	621.50	342.50	621.50	245.50	63.00	280.50	7,487	63.00	94.50	126.00	252.00		
DHC-8-100	C	35,000	56.70	215.71	10.36	78.07	299.70	459.91	253.45	459.91	181.67	52.00	216.67	6,205	52.00	78.00	104.00	208.00		
DHC-8-200	C	35,000	56.70	215.71	10.36	78.07	299.70	459.91	253.45	459.91	181.67	52.00	216.67	6,205	52.00	78.00	104.00	208.00		
DHC-8-300	C	42,000	68.04	291.50	14.00	105.50	405.00	621.50	342.50	621.50	245.50	63.00	280.50	7,567	63.00	94.50	126.00	252.00		
DHC-8-400	C	62,000	100.44	408.10	19.60	147.70	567.00	870.10	479.50	870.10	343.70	84.00	378.70	10,030	84.00	126.00	168.00	336.00		
Diamond DA20	M-1	15,000	24.30	11.66	0.56	4.22	16.20	24.86	13.70	24.86	9.82	15.00	44.82	1,800	15.00	22.50	30.00	60.00		
Diamond DA40	M-1	15,000	24.30	23.32	1.12	8.44	32.40	49.72	27.40	49.72	19.64	15.00	54.64	1,800	15.00	22.50	30.00	60.00		
Diamond DA42	M-1	15,000	24.30	23.32																

MIAMI-DADE AVIATION DEPARTMENT
AVIATION CHARGES AT MIAMI INTERNATIONAL AIRPORT
Effective October 1, 2020 - September 30, 2021
 Based on \$1.62 per 1,000 Pounds of Nominal Gross Landed Weight

Aircraft Type	Size	Landing Weight	Landing Charges	All Airlines	All	CUTE RENTAL FEE	All Airlines Departure	All Airlines International Arrival	International Departure AA Only	GAC International Arrival	GAC DOMESTI C Arriv/Dep	GAC/Remote Fuel Stop	Terminal Fuel Stop	Square Footage	1-5 Days	6-15 Days	16-30 Days	31+ Days
				Domestic Arrival	Departing Cute Gates													
EMB-110 Bandeirante	C	15,000	24.30	110.77	5.32	40.09	153.90	236.17	130.15	236.17	93.29	21.00	128.29	2,499	21.00	31.50	42.00	84.00
EMB-120 Brasilia	C	26,000	42.12	174.90	8.40	63.30	243.00	372.90	205.50	372.90	147.30	36.00	182.30	4,257	36.00	54.00	72.00	144.00
EMBRAER RJ145EP	N	42,000	68.04	174.90	8.40	63.30	243.00	372.90	205.50	372.90	147.30	54.00	182.30	6,448	54.00	81.00	108.00	216.00
EMBRAER 175/170-200	N	75,000	121.50	443.08	21.28	160.36	615.60	944.68	520.60	944.68	373.16	74.00	408.16	8,882	74.00	111.00	148.00	296.00
EMBRAER 195/190-200	N	101,000	163.62	687.94	33.04	248.98	955.80	1,466.74	808.30	1,466.74	579.38	101.00	614.38	12,065	101.00	151.50	202.00	404.00
EMBRAER ERJ170-100	N	72,000	116.64	408.10	19.60	147.70	567.00	870.10	479.50	870.10	343.70	70.00	378.70	8,378	70.00	105.00	140.00	280.00
EMBRAER ERJ-190-100	N	98,000	158.76	577.17	27.72	208.89	801.90	1,230.57	678.15	1,230.57	486.09	94.00	521.09	11,305	94.00	141.00	188.00	376.00
Embraer Phenom 100	M-1	15,000	24.30	34.98	1.68	12.66	48.60	74.58	41.10	74.58	29.46	15.00	64.46	1,800	15.00	22.50	30.00	60.00
Embraer Phenom 300	C	17,000	27.54	34.98	1.68	12.66	48.60	74.58	41.10	74.58	29.46	23.00	64.46	2,769	23.00	34.50	46.00	92.00
EMBRAER EMB-550 (LEGACY 500)	C	35,000	56.70	46.64	2.24	16.88	64.80	99.44	54.80	99.44	39.28	39.00	74.28	4,623	39.00	58.50	78.00	156.00
FALCON 10 / 100	C	18,000	29.16	46.64	2.24	16.88	64.80	99.44	54.80	99.44	39.28	16.00	74.28	1,931	16.00	24.00	32.00	64.00
FALCON 2000	C	40,000	64.80	110.77	5.32	40.09	153.90	236.17	130.15	236.17	93.29	40.00	128.29	4,757	40.00	60.00	80.00	160.00
FALCON 20D/20F/200	C	27,000	43.74	81.62	3.92	29.54	113.40	174.02	95.90	174.02	68.74	25.00	103.74	3,009	25.00	37.50	50.00	100.00
FALCON 50	C	36,000	58.32	58.30	2.80	21.10	81.00	124.30	68.50	124.30	49.10	31.00	84.10	3,715	31.00	46.50	62.00	124.00
FALCON 5X	C	67,000	108.54	46.64	2.24	16.88	64.80	99.44	54.80	99.44	39.28	60.00	74.28	7,138	60.00	90.00	120.00	240.00
FALCON 7X	C	63,000	102.06	46.64	2.24	16.88	64.80	99.44	54.80	99.44	39.28	55.00	74.28	6,622	55.00	82.50	110.00	220.00
FALCON 8X	C	63,000	102.06	81.62	3.92	29.54	113.40	174.02	95.90	174.02	68.74	59.00	103.74	7,047	59.00	88.50	118.00	236.00
FALCON 900	C	45,000	72.90	46.64	2.24	16.88	64.80	99.44	54.80	99.44	39.28	40.00	74.28	4,757	40.00	60.00	80.00	160.00
FOKKER 100	N	88,000	142.56	629.64	30.24	227.88	874.80	1,342.44	739.80	1,342.44	530.28	90.00	565.28	10,739	90.00	135.00	180.00	360.00
FOKKER 50 (F27-50)	C	43,000	69.66	338.14	16.24	123.38	469.80	720.94	397.30	720.94	284.78	66.00	319.78	7,874	66.00	99.00	132.00	264.00
FOKKER 70 (F28-70)	C	78,000	126.36	466.40	22.40	168.80	648.00	994.40	548.00	994.40	392.80	67.00	427.80	7,964	67.00	100.50	134.00	268.00
FOKKER F27	C	42,000	68.04	291.50	14.00	105.50	405.00	621.50	342.50	621.50	245.50	65.00	280.50	7,835	65.00	97.50	130.00	260.00
FOKKER F28 1000	C	59,000	95.58	367.29	17.64	132.93	510.30	783.09	431.55	783.09	309.33	58.00	344.33	6,958	58.00	87.00	116.00	232.00
FOKKER F28 2000	C	59,000	95.58	367.29	17.64	132.93	510.30	783.09	431.55	783.09	309.33	58.00	344.33	6,958	58.00	87.00	116.00	232.00
FOKKER F28 3000	C	69,000	111.78	495.55	23.80	179.35	688.50	1,056.55	582.25	1,056.55	417.35	67.00	452.35	7,991	67.00	100.50	134.00	268.00
FOKKER F28 4000	C	69,000	111.78	495.55	23.80	179.35	688.50	1,056.55	582.25	1,056.55	417.35	67.00	452.35	7,991	67.00	100.50	134.00	268.00
GRUMMAN EXCEPT G-111	M-1	15,000	24.30	46.64	2.24	16.88	64.80	99.44	54.80	99.44	39.28	15.00	74.28	1,800	15.00	22.50	30.00	60.00
Grumman G-111	C	32,000	51.84	163.24	7.84	59.08	226.80	348.04	191.80	348.04	137.48	49.00	172.48	5,850	49.00	73.50	98.00	196.00
Gulfstream G150	C	22,000	35.64	46.64	2.24	16.88	64.80	99.44	54.80	99.44	39.28	26.00	74.28	3,169	26.00	39.00	52.00	104.00
GULFSTREAM G500/G-VII-500	C	65,000	105.30	110.77	5.32	40.09	153.90	236.17	130.15	236.17	93.29	68.00	128.29	8,096	68.00	102.00	136.00	272.00
GULFSTREAM G600/G-VII-600	C	77,000	124.74	110.77	5.32	40.09	153.90	236.17	130.15	236.17	93.29	77.00	128.29	9,215	77.00	115.50	154.00	308.00
BOMBARDIER GLOBAL 7000	C	86,000	139.32	99.11	4.76	35.87	137.70	211.31	116.45	211.31	83.47	97.00	118.47	11,648	97.00	145.50	194.00	388.00
BOMBARDIER GLOBAL 8000	C	86,000	139.32	75.79	3.64	27.43	105.30	161.59	89.05	161.59	63.83	90.00	98.83	10,712	90.00	135.00	180.00	360.00
Gulfstream G-159	C	33,000	53.46	128.26	6.16	46.42	178.20	273.46	150.70	273.46	108.02	42.00	143.02	5,013	42.00	63.00	84.00	168.00
Gulfstream G280	C	33,000	53.46	58.30	2.80	21.10	81.00	124.30	68.50	124.30	49.10	35.00	84.10	4,211	35.00	52.50	70.00	140.00
Gulfstream G450/G-IV-X	C	66,000	106.92	93.28	4.48	33.76	129.60	198.88	109.60	198.88	78.56	58.00	113.56	6,953	58.00	87.00	116.00	232.00
Gulfstream G550/G-V-SP	C	75,000	121.50	104.94	5.04	37.98	145.80	223.74	123.30	223.74	88.38	75.00	123.38	9,015	75.00	112.50	150.00	300.00
Gulfstream G650/G-VI	C	84,000	136.08	69.96	3.36	25.32	97.20	149.16	82.20	149.16	58.92	83.00	93.92	9,933	83.00	124.50	166.00	332.00
Gulfstream G700/G-VIII-700	C	84,000	136.08	110.77	5.32	40.09	153.90	236.17	130.15	236.17	93.29	95.00	128.29	11,330	95.00	142.50	190.00	380.00
Gulfstream Galaxy	C	28,000	45.36	58.30	2.80	21.10	81.00	124.30	68.50	124.30	49.10	30.00	84.10	3,613	30.00	45.00	60.00	120.00
Gulfstream III/III/IV	C	59,000	95.58	93.28	4.48	33.76	129.60	198.88	109.60	198.88	78.56	54.00	113.56	6,465	54.00	81.00	108.00	216.00
Gulfstream V	C	66,000	106.92	46.64	2.24	16.88	64.80	99.44	54.80	99.44	39.28	71.00	74.28	8,510	71.00	106.50	142.00	284.00
HA-420	M-1	15,000	24.30	34.98	1.68	12.66	48.60	74.58	41.10	74.58	29.46	15.00	64.46	1,800	15.00	22.50	30.00	60.00
Hawker 700	C	23,000	37.26	46.64	2.24	16.88	64.80	99.44	54.80	99.44	39.28	22.00	74.28	2,621	22.00	33.00	44.00	88.00
Hawker 750	C	23,000	37.26	46.64	2.24	16.88	64.80	99.44	54.80	99.44	39.28	22.00	74.28	2,621	22.00	33.00	44.00	88.00
Hawker 800	C	23,000	37.26	46.64	2.24	16.88	64.80	99.44	54.80	99.44	39.28	22.00	74.28	2,621	22.00	33.00	44.00	88.00
Hawker 850	C	23,000	37.26	46.64	2.24	16.88	64.80	99.44	54.80	99.44	39.28	22.00	74.28	2,621	22.00	33.00	44.00	88.00
Hawker 900XP	C	23,000	37.26	46.64	2.24	16.88	64.80	99.44	54.80	99.44	39.28	22.00	74.28	2,621	22.00	33.00	44.00	88.00
Hawker 1000	C	31,000	50.22	52.47	2.52	18.99	72.90	111.87	61.65	111.87	44.19	23.00	79.19	2,763	23.00	34.50	46.00	92.00
Hawker 4000	C	34,000	55.08	46.64	2.24	16.88	64.80	99.44	54.80	99.44	39.28	36.00	74.28	4,292	36.00	54.00	72.00	144.00
Helicopters	M-1	15,000	24.30	23.32	1.12	8.44	32.40	49.72	27.40	49.72	19.64	15.00	54.64	1,800	15.00	22.50	30.00	60.00
HS 125 (except 1000)	C	23,000	37.26	46.64	2.24	16.88	64.80	99.44	54.80	99.44	39.28	19.00	74.28	2,228	19.00	28.50	38.00	76.00
IL-114	C	50,000	81.00	373.12	17.92	135.04	518.40	795.52	438.40	795.52	314.24	71.00	349.24	8,519	71.00	106.50	142.00	284.00
IL-62 / 62M / 62MK	N	252,000	408.24	1,066.89	51.24	386.13	1,482.30	2,274.69	1,253.55	2,274.69	898.53	207.00	933.53	24,736	207.00	310.50	414.00	828.00
IL-76 / MD	W	334,000	541.08	-	-	-	-	-	-	-	-	210.00	35.00	25,153	210.00	315.00	420.00	840.00
IL-86	W	386,000	625.32	2,040.50	98.00	738.50	2,835.00	4,350.50	2,397.50	4,350.50	1,718.50	258.00	1,753.50	30,834	258.00	387.00	516.00	1,032.00
IL-96-300	W	386,000	625.32	1,370.05	65.80	495.85	1,903.50	2,921.05	1,609.75	2,921.05	1,153.85	300.00	1,188.85	35,849	300.00	450.00	600.00	1,200.00
ISLANDER (PILATUS)	M-1	15,000	24.30	58.30	2.80	21.10	81.00	124.30	68.50	124.30	49.10	15.00	84.10	1,800	15.00	22.50	30.00	60.00
Jetstream 31	C	15,000	24.30	104.94	5.04	37.98	145.80	223.74	123.30	223.74	88.38	20.00	123.38	2,453	20.00	30.00	40.00	80.00
Jetstream 32	C	15,000	24															

MIAMI-DADE AVIATION DEPARTMENT
AVIATION CHARGES AT MIAMI INTERNATIONAL AIRPORT
Effective October 1, 2020 - September 30, 2021
 Based on \$1.62 per 1,000 Pounds of Nominal Gross Landed Weight

Aircraft Type	Size	Landing Weight	Landing Charges	All Airlines	All	CUTE RENTAL FEE	All Airlines Departure	All Airlines International Arrival	International Departure AA Only	GAC International Arrival	GAC DOMESTIC Arriv/Dep	GAC/Remote Fuel Stop	Terminal Fuel Stop	Square Footage	1-5 Days	6-15 Days	16-30 Days	31+ Days
				Domestic Arrival	Departing Cute Gates													
Learjet C-21A	C	16,000	25.92	46.64	2.24	16.88	64.80	99.44	54.80	99.44	39.28	17.00	74.28	2,080	17.00	25.50	34.00	68.00
Learjet 20 series	M-1	15,000	24.30	58.30	2.80	21.10	81.00	124.30	68.50	124.30	49.10	15.00	84.10	1,800	15.00	22.50	30.00	60.00
Learjet 30 series	C	16,000	25.92	58.30	2.80	21.10	81.00	124.30	68.50	124.30	49.10	17.00	84.10	2,080	17.00	25.50	34.00	68.00
Learjet 45	C	19,000	30.78	58.30	2.80	21.10	81.00	124.30	68.50	124.30	49.10	17.00	84.10	2,080	17.00	25.50	34.00	68.00
Learjet 55	C	16,000	25.92	58.30	2.80	21.10	81.00	124.30	68.50	124.30	49.10	17.00	84.10	2,080	17.00	25.50	34.00	68.00
Learjet 60	C	20,000	32.40	58.30	2.80	21.10	81.00	124.30	68.50	124.30	49.10	17.00	84.10	2,080	17.00	25.50	34.00	68.00
Learjet 70	C	20,000	32.40	46.64	2.24	16.88	64.80	99.44	54.80	99.44	39.28	24.00	74.28	2,856	24.00	36.00	48.00	96.00
Learjet 75	C	20,000	32.40	46.64	2.24	16.88	64.80	99.44	54.80	99.44	39.28	24.00	74.28	2,856	24.00	36.00	48.00	96.00
LET 420	C	15,000	24.30	110.77	5.32	40.09	153.90	236.17	130.15	236.17	93.29	25.00	128.29	3,026	25.00	37.50	50.00	100.00
LM200	C	19,000	30.78	157.41	7.56	56.97	218.70	335.61	184.95	335.61	132.57	83.00	167.57	9,890	83.00	124.50	166.00	332.00
Maule (ALL)	M-1	15,000	24.30	23.32	1.12	8.44	32.40	49.72	27.40	49.72	19.64	15.00	54.64	1,800	15.00	22.50	30.00	60.00
MD-11 Ftr	W	472,000	764.64	-	-	-	-	-	-	-	-	284.00	35.00	34,036	284.00	426.00	568.00	1,136.00
MD-11 Pax 11ER	W	430,000	696.60	1,661.55	79.80	601.35	2,308.50	3,542.55	1,952.25	3,542.55	1,399.35	284.00	1,434.35	33,995	284.00	426.00	568.00	1,136.00
MD-81	N	128,000	207.36	851.18	40.88	308.06	1,182.60	1,814.78	1,000.10	1,814.78	716.86	133.00	751.86	15,944	133.00	199.50	266.00	532.00
MD-82	N	130,000	210.60	903.65	43.40	327.05	1,255.50	1,926.65	1,061.75	1,926.65	761.05	133.00	796.05	15,944	133.00	199.50	266.00	532.00
MD-83	N	139,000	225.18	903.65	43.40	327.05	1,255.50	1,926.65	1,061.75	1,926.65	761.05	133.00	796.05	15,944	133.00	199.50	266.00	532.00
MD-87	N	130,000	210.60	635.47	30.52	229.99	882.90	1,354.87	746.65	1,354.87	535.19	117.00	570.19	14,057	117.00	175.50	234.00	468.00
MD-88	N	130,000	210.60	668.67	41.72	314.39	1,206.90	1,852.07	1,020.65	1,852.07	731.59	133.00	766.59	15,944	133.00	199.50	266.00	532.00
MD-90-30	N	142,000	230.04	921.14	44.24	333.38	1,279.80	1,963.94	1,082.30	1,963.94	775.78	138.00	810.78	16,461	138.00	207.00	276.00	552.00
Merlin (all)	C	16,000	25.92	110.77	5.32	40.09	153.90	236.17	130.15	236.17	93.29	28.00	128.29	3,386	28.00	42.00	56.00	112.00
Metro (all)	C	16,000	25.92	110.77	5.32	40.09	153.90	236.17	130.15	236.17	93.29	28.00	128.29	3,386	28.00	42.00	56.00	112.00
Mooney (All)	M-1	15,000	24.30	23.32	1.12	8.44	32.40	49.72	27.40	49.72	19.64	15.00	54.64	1,800	15.00	22.50	30.00	60.00
MU-2/24/26	M-1	15,000	24.30	46.64	2.24	16.88	64.80	99.44	54.80	99.44	39.28	15.00	74.28	1,800	15.00	22.50	30.00	60.00
RJ70	N	80,000	129.60	466.40	22.40	168.80	648.00	994.40	548.00	994.40	392.80	88.00	427.80	10,560	88.00	132.00	176.00	352.00
Navion (All)	M-1	15,000	24.30	23.32	1.12	8.44	32.40	49.72	27.40	49.72	19.64	15.00	54.64	1,800	15.00	22.50	30.00	60.00
Nord 262	C	23,000	37.26	169.07	8.12	61.19	234.90	360.47	198.65	360.47	142.39	38.00	177.39	4,501	38.00	57.00	76.00	152.00
P180 Avanti	C	15,000	24.30	52.47	2.52	18.99	72.90	111.87	61.65	111.87	44.19	18.00	79.19	2,174	18.00	27.00	36.00	72.00
Tecnam P2012 Traveller	C	15,000	24.30	52.47	2.52	18.99	72.90	111.87	61.65	111.87	44.19	15.00	79.19	1,800	15.00	22.50	30.00	60.00
PILATUS PC-24	C	15,000	24.30	58.30	2.80	21.10	81.00	124.30	68.50	124.30	49.10	26.00	84.10	3,136	26.00	39.00	52.00	104.00
P-3 Orion	N	96,000	155.52	478.06	22.96	173.02	664.20	1,019.26	561.70	1,019.26	402.62	97.00	437.62	11,587	97.00	145.50	194.00	388.00
PC-12/PC-6	M-1	15,000	24.30	58.30	2.80	21.10	81.00	124.30	68.50	124.30	49.10	15.00	84.10	1,800	15.00	22.50	30.00	60.00
Piper (MALIBU & MULTI ENGINE)	M-1	15,000	24.30	46.64	2.24	16.88	64.80	99.44	54.80	99.44	39.28	15.00	74.28	1,800	15.00	22.50	30.00	60.00
Piper Single Engine	M-1	15,000	24.30	23.32	1.12	8.44	32.40	49.72	27.40	49.72	19.64	15.00	54.64	1,800	15.00	22.50	30.00	60.00
Pitts (All)	M-1	15,000	24.30	11.66	0.56	4.22	16.20	24.86	13.70	24.86	9.82	15.00	44.82	1,800	15.00	22.50	30.00	60.00
RJ100 Regional Jet	N	45,000	72.90	291.50	14.00	105.50	405.00	621.50	342.50	621.50	245.50	52.00	280.50	6,222	52.00	78.00	104.00	208.00
RJ200 Regional Jet	N	47,000	76.14	291.50	14.00	105.50	405.00	621.50	342.50	621.50	245.50	51.00	280.50	6,120	51.00	76.50	102.00	204.00
RJ700 / Challenger 870	N	67,000	108.54	408.10	19.60	147.70	567.00	870.10	478.50	870.10	343.70	68.00	378.70	8,149	68.00	102.00	136.00	272.00
RJ900 / Challenger 890	N	74,000	119.88	443.08	21.28	160.36	615.60	944.68	520.60	944.68	373.16	76.00	408.16	9,072	76.00	114.00	152.00	304.00
RJ1000	N	82,000	132.84	606.32	29.12	219.44	842.40	1,292.72	712.40	1,292.72	510.64	92.00	545.64	11,027	92.00	138.00	184.00	368.00
RJ135	C	41,000	66.42	215.71	10.36	78.07	299.70	459.91	253.45	459.91	181.67	48.00	216.67	5,692	48.00	72.00	96.00	192.00
RJ140	N	41,000	66.42	256.52	12.32	92.84	356.40	546.92	301.40	546.92	216.04	51.00	251.04	6,136	51.00	76.50	102.00	204.00
RJ145	N	42,000	68.04	291.50	14.00	105.50	405.00	621.50	342.50	621.50	245.50	54.00	280.50	6,448	54.00	81.00	108.00	216.00
RJ90	C	84,000	136.08	536.36	25.76	194.12	745.20	1,143.56	630.20	1,143.56	451.72	95.00	486.72	11,328	95.00	142.50	190.00	380.00
Saab 2000	C	48,000	77.76	198.22	9.52	71.74	275.40	422.62	232.90	422.62	166.94	60.00	201.94	7,211	60.00	90.00	120.00	240.00
Saab 340 Except 340A	C	28,000	45.36	174.90	8.40	63.30	243.00	372.90	205.50	372.90	147.30	38.00	182.30	4,575	38.00	57.00	76.00	152.00
Saab 340A	C	28,000	45.36	104.94	5.04	37.98	145.80	223.74	123.30	223.74	88.38	38.00	123.38	4,575	38.00	57.00	76.00	152.00
Saberliner (ALL)	C	20,000	32.40	58.30	2.80	21.10	81.00	124.30	68.50	124.30	49.10	20.00	84.10	2,368	20.00	30.00	40.00	80.00
Shorts 330 (SD3-30)	C	23,000	37.26	174.90	8.40	63.30	243.00	372.90	205.50	372.90	147.30	36.00	182.30	4,333	36.00	54.00	72.00	144.00
Shorts 360 (SD3-60)	C	27,000	43.74	209.88	10.08	75.96	291.60	447.48	246.60	447.48	176.76	44.00	211.76	5,288	44.00	66.00	88.00	176.00
Sukhoi S5100-95	N	90,000	145.80	542.19	26.04	196.23	753.30	1,155.99	637.05	1,155.99	456.63	75.00	491.63	8,957	75.00	112.50	150.00	300.00
Swearingen Merlin	M-1	15,000	24.30	46.64	2.24	16.88	64.80	99.44	54.80	99.44	39.28	15.00	74.28	1,800	15.00	22.50	30.00	60.00
TECNAM ASTORE	M-1	15,000	24.30	11.66	0.56	4.22	16.20	24.86	13.70	24.86	9.82	15.00	44.82	1,800	15.00	22.50	30.00	60.00
TECNAM P2006T	M-1	15,000	24.30	23.32	1.12	8.44	32.40	49.72	27.40	49.72	19.64	15.00	54.64	1,800	15.00	22.50	30.00	60.00
TECNAM P2002 SIERRA	M-1	15,000	24.30	11.66	0.56	4.22	16.20	24.86	13.70	24.86	9.82	15.00	44.82	1,800	15.00	22.50	30.00	60.00
TECNAM P2004 BRAVO	M-1	15,000	24.30	23.32	1.12	8.44	32.40	49.72	27.40	49.72	19.64	15.00	54.64	1,800	15.00	22.50	30.00	60.00
TECNAM P2010 TWENTY-TEN	M-1	15,000	24.30	23.32	1.12	8.44	32.40	49.72	27.40	49.72	19.64	15.00	54.64	1,800	15.00	22.50	30.00	60.00
TECNAM P2008	M-1	15,000	24.30	11.66	0.56	4.22	16.20	24.86	13.70	24.86	9.82	15.00	44.82	1,800	15.00	22.50	30.00	60.00
TECNAM P92	M-1	15,000	24.30	11.66	0.56	4.22	16.20	24.86	13.70	24.86	9.82	15.00	44.82	1,800	15.00	22.50	30.00	60.00
TRISLANDER BN-2A	M-1	15,000	24.30	52.47	2.52	18.99	72.90	111.87	61.65	111.87	44.19	15.00	79.19	1,800	15.00	22.50	30.00	60.00
Tu-154	N	176,000	285.12	1,002.76	48.16	362.92	1,393.20	2,137.96	1,178.20	2,137.96	844.52	90.00						

TERMINAL TAB

**AIRLINE ACTIVITY BASED FEES CALCULATION
MIAMI INTERNATIONAL AIRPORT
FOR FISCAL YEARS ENDING SEPTEMBER 30,**

CONCOURSE USE FEE CALCULATION

		<u>FY 2019-20</u>	<u>FY 2020-21</u>
Holdroom Square Feet	[A]	1,040,652	409,746
Circulation Square Feet	[B]	0	513,498
Total Holdroom and Circulation Square Feet	[C=A+B]	1,040,652	923,244
Class III Terminal Rental Rate	[D]	\$95.00	\$88.75
Equivalent Concourse Rent	[E=CxD]	\$98,861,940	\$81,937,905
Active Gates	[F]		123
Fee per Preferential Gate - Annually	[G=E/F]		666,161.83
Preferential Gates	[H=F-J]		62
Equivalent Concourse Rent - Preferential Gates	[I=GxH]		\$41,302,033
Common Use Gates	[J]		61
Equivalent Concourse Rent - Common Use Gates	[K=GxJ]		\$40,635,872
Total Domestic Arr./Dep., Int'l Dep. plus Precleared	[L]	41,175,215	8,281,132
Fee per Seat - Common Use	[M=K/L]	\$2.40	\$4.91

BAGGAGE CLAIM FEE CALCULATION

Baggage Claim Square Feet	[A]	90,436	85,880
Class III Terminal Rental Rate	[B]	\$95.00	\$88.75
Equivalent Rent	[C=AxB]	\$8,591,420	\$7,621,850
Baggage Claim Eqpmt & Maintenance Costs	[D]	3,645,821	2,149,967
Total for Recovery	[E=C+D]	\$12,237,241	\$9,771,817
Domestic Arriving Seats	[F]	14,025,591	10,647,117
Fee per Seat	[E/F]	\$0.87	\$0.92

SCREENING USE FEE CALCULATION

Screening Costs		\$9,326,550	\$14,394,871
Less: Reimbursement from TSA		<u>(500,000)</u>	<u>(500,000)</u>
	[A]	\$8,826,550	\$13,894,871

Class III Screening Sq. Ft.	[B]	124,833	158,118
Class III Terminal Rental Rate	[C]	\$95.00	\$88.75
Class III Screening Space Costs	[D=BxC]	11,859,135	\$14,032,973
Class IV Screening Sq. Ft.	[E]	53,045	46,037
Class IV Terminal Rental Rate	[F]	\$47.50	\$44.38
Class IV Screening Space Costs	[G=ExF]	2,519,638	\$2,043,122
Screening Space Costs - Total	[H=D+G]	14,378,773	\$16,076,095

Total Departing Seats	[I]	27,149,624	20,748,588
Fee per Seat	[J=(A+H)/I]	\$0.85	\$1.44

INTERNATIONAL FACILITIES USE FEE CALCULATION

International Facilities Costs	[A]	\$27,890,245	\$25,368,366
QAS Porter Service Equipment Reimbursement	[B]	0	0
	[C=A+B]	\$27,890,245	\$25,368,366

Class III - Int'l Sterile, FIS and Bag Claim Sq. Ft.	[D]	1,140,891	1,090,818
Class III Terminal Rental Rate	[E]	\$95.00	\$88.75
International Space Costs	[F=DxE]	\$108,384,645	\$96,810,098

International Inbound - Class IV - South Terminal	[G]	16,995	16,995
International Inbound - Class IV - North Terminal	[H]	59,840	59,840
	[I=G+H]	76,835	76,835

Class IV Terminal Rental Rate	[J]	\$47.50	\$44.38
International Inbound Costs	[K=IxJ]	\$3,649,663	\$3,409,937

International Facilities and Inbound Costs	[L=C+F+K]	\$139,924,552	\$125,588,401
International Arriving Seats	[M]	13,124,785	10,104,296

Fee per Seat	[L/M]	\$10.66	\$12.43
---------------------	--------------	----------------	----------------

**TERMINAL RENTAL RATES CALCULATION
MIAMI INTERNATIONAL AIRPORT
FOR FISCAL YEARS ENDING SEPTEMBER 30,**

AVERAGE (CLASS III) TERMINAL RENTAL RATE CALCULATION

		<u>FY 2019-20</u>	<u>FY 2020-21</u>
Terminal Rent Requirement	[A]	\$425,168,203	\$384,132,014
Weighted Revenue Sq. Ft.	[B]	4,475,497	4,328,027
Class III Rate per Sq. Ft.	[A/B]	\$95.00	\$88.75

WEIGHTED RENTAL RATES CALCULATION

<u>Type of Space</u>	<u>Class III Rate</u>	<u>Weight Factor</u>	<u>Rate</u>	<u>Airline Rented Space</u>	<u>Total Airline Revenue</u>
	[A]	[B]	[C=AxB]	[D]	[Cx D]
<u>FY 2019-20</u>					
Class I	\$95.00	1.00	\$95.00	19,032	\$1,808,040
Class II	\$95.00	1.50	142.50	176,913	25,210,103
Class III	\$95.00	1.00	95.00	243,714	23,152,830
Class IV	\$95.00	0.50	47.50	220,169	10,458,028
Class V	\$95.00	0.25	23.75	10,527	250,016
Class VI	\$95.00	1.00	95.00	3,477	330,315
				<u>673,832</u>	<u>\$61,209,331</u>
<u>FY 2020-21</u>					
Class I	\$88.75	1.00	\$88.75	20,024	\$1,777,130
Class II	88.75	1.50	133.13	169,040	22,504,295
Class III	88.75	1.00	88.75	272,742	24,205,853
Class IV	88.75	0.50	44.38	221,536	9,831,768
Class V	88.75	0.25	22.19	11,879	263,595
Class VI	88.75	1.00	88.75	3,477	308,584
				<u>698,698</u>	<u>\$58,891,224</u>

CUTE RATES
MIAMI INTERNATIONAL AIRPORT
Effective October 1, 2020

CUTE Gate Rates

- Infrastructure Fee—**\$0.00 per departing seat**
- Gate Usage Fee (CUTE Equipment Rental)—**\$0.28 per departing seat**

Ticket Counter Usage Fee – *The Aviation Department began recovering CUTE costs through departing seats effective Oct. 1, 2014.*

	<u>Fee per Departing Seat</u>	<u>Fee per ticket counter hour *</u>
CUTE Equipment Rental	\$0.68	\$6.85
Class I Rental Expense for Ticket Counter	0.41	4.13
Class IV Rental Expense for Baggage Makeup	1.00	11.23
CUTE Dynamic Signage (Back-wall Displays)	<u>0.02</u>	<u>0.23</u>
Total	<u>\$2.11</u>	<u>\$22.44</u>

Maximum daily rate per ticket counter - **\$269.28 (12 hours multiplied by Ticket Counter Usage Fee)***

** Applies to CUTE-exempt carriers only*

CUTE Dynamic Signage (Back-wall Displays)

- Maximum monthly rate - **\$50.00 per ticket counter position.**
- Annual rate for back-wall displays located within leased areas - **\$1,200.00 per display.**

CUTE Back-office / Operations / Educational Equipment – the monthly charge will apply to vendor-maintained CUTE equipment located in leased areas. Wiring and cabling installation will be charged separately.

- **Monthly Charge per Unit - \$122.80**

Manual CUTE Ticket Counter Rates

Rates apply to airlines that use CUTE ticket counters but process their passengers manually. These rates also apply to General Aeronautical Service Permittees (GASPer) who process passengers for airlines that do not have a Terminal Agreement with MDAD.

- **Standard Manual Rate -**
 - * **Wide-body aircraft (over 200 seats) - \$628.41 per flight**
Based on seven ticket counters at four hours each = 7 x 4 x hourly ticket counter usage fee of \$22.44
 - * **Narrow aircraft (101 seats through 200 seats) - \$359.09 per flight**
Based on four ticket counters at four hours each = 4 x 4 x hourly ticket counter usage fee of \$22.44
 - * **Regional Commuter aircraft (20 seats through 100 seats) - \$179.54 per flight**
Based on two ticket counters at four hours each = 2 x 4 x hourly ticket counter usage fee of \$22.44
 - * **Small Turbo aircraft (under 20 seats) - \$89.77 per flight**
Based on two ticket counters at four hours each = 1 x 4 x hourly ticket counter usage fee of \$22.44
- **Unauthorized Manual Rate** – Airline is charged unauthorized rates if the CUTE system was available and they did not use it.
 - * **Wide-body aircraft (over 200 seats) - \$1,256.81 per flight**
Based on seven ticket counters at four hours each = 7 x 4 x hourly ticket counter usage fee of \$22.44 + 100% premium
 - * **Narrow aircraft (101 seats through 200 seats) - \$718.18 per flight**
Based on four ticket counters at four hours each = 4 x 4 x hourly ticket counter usage fee of \$22.44 + 100% premium
 - * **Regional Commuter aircraft (20 seats through 100 seats) - \$359.09 per flight**
Based on four ticket counters at four hours each = 2 x 4 x hourly ticket counter usage fee of \$22.44 + 100% premium
 - * **Small Turbo aircraft (under 20 seats) - \$179.54 per flight**
Based on four ticket counters at four hours each = 1 x 4 x hourly ticket counter usage fee of \$22.44 + 100% premium

CUTE RATES
MIAMI INTERNATIONAL AIRPORT
Effective October 1, 2020

Miscellaneous CUTE Charges

Hourly Charges (TWOV lounges, ITI lounges, ITI baggage, and Ramp Baggage Make-up) - the fee shall be \$6.85 per hour for each respective area.

Cruise Check-In Facility at Miami Seaport maintenance charges (added to CUTE hourly usage fees) – on-site maintenance single circuit is \$10.00 per hour with back-up circuit at \$10.34 per hour. For on-call maintenance (response within two hours) the fee is \$3.16 per hour for single circuit and \$3.51 per hour for back-up circuit.

CUTE Rate Based on Departing Aircraft Seat – A CUTE rate of \$2.11 per departing aircraft seat will be charged to non-exempt carriers.

CUSS Charges (Common Use Self Service)

Per Transaction Fee – the fee shall be \$0.58 per transaction at all Miami-Dade Aviation Department common use CUSS units.

Monthly Fee (Desktop Unit) – The fee shall be **\$48.78 per unit, per month.** Includes hardware/software costs and operation & maintenance costs.

Monthly Fee (Standalone Unit) – The fee shall be **\$93.16 per unit, per month.** Includes hardware/software costs, 6 sq. ft. of class I space at current rate and operation & maintenance costs.

Closed-Circuit Television (CCTV)

Cameras

- PTZ (Pan-Tilt-Zoom) \$24.00 each, per month
- Fixed \$16.00 each, per month

Viewing/Workstations

- Cellstack/NICE (1) \$614.00 each, per month
- Cellstack (2) \$553.00 each, per month
- NICE (3) \$461.00 each, per month

Recording – Per Port

- NICE Pro (30-day recording) \$14.00 each, per month
- NICE Harmony (20-day recording) \$9.00 each, per month

- (1) *Required for recording*
- (2) *Digital quality viewing without recording capability*
- (3) *Standard quality viewing without recording capability*

**CALCULATION OF CUTE FEES
MIAMI-DADE AVIATION DEPARTMENT
For Fiscal Year Ending September 30,**

		Budget			
		FY2020	FY2021		
Infrastructure Fee (included in Concourse Use Fee)					
Operating Costs		\$0.00		\$0.00	
Equipment Costs (Core Room Hardware/Servers)		0.00		0.00	
	[A]	\$0.00		\$0.00	
All Departing Seats Estimate	[B]	27,149,960		20,746,634	
Cost per Departing Seat	[A/B]	\$0.00		\$0.00	
Gate Usage Fee					
Operating Costs		\$1,216,820		\$1,229,449	
Training Cost Allocation (5)		39,685		37,527	
Telecom Charges		30,384		27,648	
Total Costs	[C]	\$1,286,888		\$1,294,624	
CUTE Airlines Departing Seats Estimate	[D]	5,991,684		4,580,361	
Gate Usage Fee per Departing Seat	[C/D]	\$0.21		\$0.28	
Ticket Counter Usage Fee					
Operating Costs	[a]	\$3,119,740		\$3,111,517	
Training Cost Allocation (5)	[a]	100,890		94,524	
Telecom Charges	[a]	57,312		48,384	
Ticket Counter Terminal Space Cost		2,175,956		1,963,434	
CUTE Class I Terminal Space (sq. ft.) (1)		28,631		27,654	
x Class I Terminal Rental Rate		\$95.00		\$88.75	
x Vacancy Factor applied to CUTE Class I sq ft		20%		20%	
Outbound Bag Makeup Terminal Space (sq. ft.)		4,627,545		4,770,761	
CUTE Class IV Terminal Space in sq ft.		97,422		107,498	
x Class IV Terminal Rental Rate		\$47.50		\$44.38	
Total Ticket Counter CUTE Costs	[E]	\$10,081,443		\$9,988,620	
CUTE Ticket Counter Hours Estimate (2)	[F]	565,000		475,000	
CUTE Ticket Counter Hours Estimate without Outbd BMU (3)	[G]	514,000		425,000	
		Hourly	Per Seat (6)	Hourly	Per Seat (6)
Ticket Counter Usage Fee	[E/F]	\$18.66	\$1.66	\$22.21	\$2.08
Ticket Counter Usage Fee W/O OUTBOUND BMU	[E/G]	\$9.65	\$0.93	\$10.98	\$1.11
Hourly Eqpmt Fee Chg for VIP Lounge	[a/F]	\$5.80	n/a	\$6.85	n/a
VIP Lounge Eqpmt Monthly Charge Cap (4)		\$1,005.62	n/a	\$1,187.58	n/a
Airline Back Office / Operations Eqpmt Monthly Charge		\$168.16	n/a	\$122.80	n/a
Common Use Display Charge					
Operating Costs		\$172,330	\$172,330	\$110,564	\$110,564
CUTE Ticket Counter Hours (2) or Seats Estimate	[H]	565,000	5,991,684	475,000	4,580,361
Display Charge per Position	[G/H]	\$0.31	\$ 0.03	\$0.23	\$0.02
Exempt Airline Monthly Charge Cap		\$50.00	n/a	\$40.00	n/a

(1) Exempt status ticket counter space is excluded from CUTE rate calculation.
(2) Based on an average of 4 hours per day per ticket counter position for 360 days.
(3) Same assumptions as footnote #(2) above, but excludes the CUTE ticket counter positions that feed to the AA/NTD baggage system.
(4) Based on hourly equipment rate multiplied by 40 hours per week multiplied by 52 weeks per year (2,080 hrs) divided by 12 months.
(5) Training costs include MDAD Training Room space rental at Class III rates.
(6) Effective Oct. 1, 2014 MDAD began charging non-exempt carriers for ticket counter usage based on departing seats.

LANDSIDE TAB

**PUBLIC AND EMPLOYEE PARKING
AT MIAMI INTERNATIONAL AIRPORT
Effective October 1, 2020**

Public Parking

Miami International Airport's parking facilities consist of two multi-level parking garages, identified as the DOLPHIN GARAGE and the FLAMINGO GARAGE.

Standard Parking Rates:

- Variable between \$8.00 and \$38.00 based on demand (Holidays, time of day, day of week, availability, etc.). *Standard parking rate of \$2.00 for each 20 minute increment or part thereof to a maximum of \$17.00 per day will remain in effect during this fiscal year, or until new rates are implemented by the Department during this fiscal year.*

Valet Parking:

- \$18.00 for the first 1-3 hours or part thereof. After 3 hours, the daily maximum will be \$30.00 per day.

Parking Space Reservation Charge:

- \$10.00 per vehicle parking space. This is a prepaid fee and charged in addition to existing vehicle parking rates. The space reservation expires when vehicle exits the reserved parking space.

Terminal

Both the DOLPHIN GARAGE and the FLAMINGO GARAGE connect to the Terminal Building by moving sidewalks, located on the 3rd level of the garages.

Disabled Parking

Designated disabled permit parking and stroller permit parking is available on the 3rd level of the garages.

Over-height Vehicles

Over-height vehicles may use the "High-Vehicle" surface lot parking area located adjacent to the East side of the DOLPHIN GARAGE.

**PUBLIC AND EMPLOYEE PARKING
AT MIAMI INTERNATIONAL AIRPORT
Effective October 1, 2020**

Employee Parking

Employee Parking Decals - the fee shall be **\$30.00 per decal per month** (Park 8 and Employee Parking Lot).

Motorcycle Parking Fee – the fee shall be **\$180.00 per decal per year.**

Long-term Parking Magnetic Cards - the fee shall be **\$100.00 per employee, per month.**

Contractor Parking

Contractor Parking Cards - the fee shall be **\$200.00 per card, per year.**

Towed Vehicles

The fee for towed vehicles shall be **\$50.00 per occurrence.**

**GROUND TRANSPORTATION FEES
MIAMI INTERNATIONAL AIRPORT
Effective October 1, 2020**

SUB-CLASS	FEE
<i>The following deposit applies to all sub-classes except for Class D:</i> <ul style="list-style-type: none"> • \$500 security deposit per company with less than 10 vehicles • \$1,000 per company with 10 or more vehicles • MDAD may waive the security deposit requirement for a company paying fees on a per trip basis and having a maximum of one trip per month 	
Shuttle/Delivery Service	
A1—Bus	\$7.00 per trip
A2—Van	\$3.00 per trip
A3—Limo	\$2.00 per trip
B1—Hotel/Motel (Small)	\$1.00 per trip
B2—Hotel/Motel (Large)	\$2.00 per trip
B3—Commercial (Small)	\$2.50 per trip
B4—Commercial (Large)	\$3.00 per trip
C1—Crew Service (Small)	\$1.00 per trip
C2—Crew Service (Large)	\$2.00 per trip
Class D—Delivery Service	MDAD may assess a fee within the range of \$1-\$12.00 which reflects the appropriate operating costs applicable to the service performed and the size of vehicle used.
Off-Airport Rental Car Companies	
B5—Off-airport Car Rental Companies with less than \$500,000 annual MIA gross revenues	\$3.00 for each MIA contract
B6—Off-airport Car Rental Companies with MIA gross revenues between \$500,000 and \$4.9 million annually	4.5% of gross revenues from MIA passengers
B7—Off-airport Car Rental Companies with MIA gross revenues in excess of \$5 million annually but less than 20 million	7.5% of gross revenues from MIA passengers
Off-Airport Parking Lot Operators	
B8—Off Airport Parking Lot Operators (Small vans)	Upper Level—\$1.00 per trip Lower Level—\$2.50 per trip
B9—Off Airport Parking Lot Operators (Large vans)	Upper Level—\$2.00 per trip Lower Level—\$3.00 per trip
Expedite Service Vehicle	
Class E Vehicles (companies with courier vehicles, armored cars and expedite late baggage vehicles)	\$200.00 annual permit fee per vehicle

Class E permits also include food vendors who pay a \$360.00 yearly fee for the annual permit, which expires each December 31st.

For sub-class B7 having *less* than \$20 million in annual gross revenues from MIA passengers, the Aviation Department charges 7.5% of gross revenues. For sub-class B7 having \$20 million or *more* in annual gross revenues from MIA passengers, 9% of gross revenues is charged.

GROUND TRANSPORTATION FEES (continued)

- **Mobile Food Truck Vendor Fee**—the annual fee shall be **\$360.00 per vehicle**. This fee will be assessed to mobile food truck vendors that sell food to the labor force at MIA.
- **Taxicab Operation Fee**—the fee shall be **\$2.00 per trip**.
- **Ground Transportation Permit Renewal Fee** – the annual fee shall be **\$100.00 per permit**.
- **Ground Transportation Permit Late Renewal Fee** – the fee shall be **\$100.00 per permit**.

AUTHORITY TO REVISE OR ADJUST BUILDING AND LAND RENTAL RATES DURING PERIOD FOLLOWING BOARD OF COUNTY COMMISSIONERS ACTION AND BEFORE NEXT APPROVAL BY BOARD BASED ON REVISED APPRAISAL

By establishing and authorizing the imposition of the rental rates reflected on the attached appraisal document or in this Budget, the Board also establishes and authorizes the Aviation Department to impose, during the period following the Board's action and before the next approval by the Board of rental rates for the properties, any revised rental rates that are based on appraisals of any of the properties described in the attached document or the Budget that are obtained as a result of an appraisal performed under the authority of Board's action or agreement previously approved by the Board.

Miami International Airport Land Rental Rates Effective October 1, 2020

The following rental rates are to be effective October 2020 and applied to all present and future leaseholds, when applicable. A map of land zone areas is attached.

Land Zone	Actual 2019-2020 Rates	Proposed 2020-2021 Rates
1 Airport	\$2.05 per sq.ft.	\$2.15 per sq.ft.
1a Airport – vacant land with aircraft access	N/A	N/A
2 Commercial sites at SEC of NW 36 th St & NW 72 nd Ave	\$2.75 per sq.ft.	\$2.75 per sq.ft.
3 N.W. 21 st St. and N.W. 39 th Avenue	\$3.15 per sq.ft.	\$3.35 per sq.ft.
4 Fuel Farm, NW 72 nd Avenue & eastern Perimeter Road	\$2.35 per sq.ft.	\$2.35 per sq.ft.
5 N.W. 16 th Street (non-buildable sites)	\$0.50 per sq.ft.	\$0.50 per sq.ft.
6 Jai-Alai fronton land area & NW 36 th Street Frontage	\$2.35 per sq.ft.	\$2.45 per sq.ft.
7 Commercial Sites on NW 12 th St & North of NW 36 th St	\$2.10 per sq.ft.	\$2.20 per sq.ft.

NOTE: There is an additional charge of \$.10 per square foot where special services are provided, such as high intensity lighting, power cost, etc.

Paving Rates

Paving rates are charged in addition to land rental rates.

Type of Paving	Actual 2019-2020 Rates	Proposed 2020-2021 Rates
Standard (Vehicular) Landside	\$.45 per sq.ft.	\$.45 per sq.ft.
Standard (Vehicular) Airside	\$.70 per sq.ft.	\$.70 per sq.ft.
Heavy Duty (Aircraft) Airside	\$.90 per sq.ft.	\$.90 per sq.ft.

Building Rental Rates Miami International Airport Effective October 1, 2020

The following are the estimated annual square foot building rates for the period October 2020 to September 2021. **Rental rates exclude land, water, sewer, electric, and common area janitorial, except where footnoted.**

Building #. (Old bldg. #)	Building Description	Actual Rate 2019-2020	Proposed Rate 2020-2021
49	Offices (A/C) Shop (A/C)	\$6.00 \$6.00	\$6.00 \$6.00
700	Cargo – Belly Building (Non A/C) Mezzanine Offices (A/C) 2nd Floor Offices (A/C) 1st Floor 3 rd Floor Storage (storage only) ²	\$10.15 (11) \$11.75 (11) \$15.00 (11) \$10.00	\$10.50 (1) \$12.50 \$15.00 (1) \$10.00
701	Cargo – Belly Building (Non A/C) Mezzanine Offices (A/C) 2nd Floor Offices (A/C) 1st Floor 3 rd Floor Storage (storage only) ²	\$10.25 (11) \$11.75 (11) \$15.00 (11) \$10.00	\$10.50 (1) \$12.50 \$15.00 (1) \$10.00
702	Cargo – Belly Building (Non A/C) Mezzanine Offices (A/C) 2nd Floor Offices (A/C) 1st Floor 3 rd Floor Storage (storage only) ²	\$10.25 (11) \$11.75 (11) \$15.00 (11) \$10.00	\$10.50 (1) \$12.50 \$15.00 (1) \$10.00
704 (2121)	Warehouse (Non-A/C)/Cargo (Non-A/C) Offices (A/C)/Shop(A/C)/Storage(A/C)	\$5.75 (12) \$6.25 (12)	\$5.75 (1) \$6.25
706	Cargo – Freighter Building (Non A/C) Offices (A/C) 1 st Floor Mezzanine Offices (A/C) 3 rd Floor Storage (storage only) ² Airside Ramp Landside Ramp	\$17.00 (11) \$17.00 (11) \$15.25 \$10.00 Included in Cargo Rent Included in Cargo Rent	\$17.00 (1) \$17.00 (1) \$15.25 \$10.00 Included in Cargo Rent Included in Cargo Rent
707	Cargo – Freighter Building (Non A/C) Offices (A/C) 1 st Floor Mezzanine Offices (A/C) 3 rd Floor Storage (storage only) ² Airside Ramp Landside Ramp	\$17.00 (11) \$17.00 (11) \$15.25 \$10.00 Included in Cargo Rent Included in Cargo Rent	\$17.00 (1) \$17.00 (1) \$15.25 \$10.00 Included in Cargo Rent Included in Cargo Rent
708	Cargo – Freighter Building (Non A/C) Offices (A/C) 1 st Floor Mezzanine Offices (A/C) 3 rd Floor Storage (storage only) ² Airside Ramp Landside Ramp	\$17.00 (11) \$17.00 (11) \$15.25 \$10.00 Included in Cargo Rent Included in Cargo Rent	\$17.00 (1) \$17.00 (1) \$15.25 \$10.00 Included in Cargo Rent Included in Cargo Rent

* No air conditioning is provided and only electric for minimal lighting.

Building Rental Rates Miami International Airport
Effective as of October 2020 (continued)

Building #. (Old bldg. #)	Building Description	Actual Rate 2019-2020	Proposed Rate 2020-2021
709	LanChile (Airis)	Tenant Constructed Cargo Freighter Building	
710	LanChile (Airis)	Tenant Constructed Cargo Freighter Building	
711	Arrow Cargo (Aeroterm)	Tenant Constructed Cargo Freighter Building	
712	Arrow Cargo (AMB Codina)	Tenant Constructed Cargo Freighter Building	
714	Cargo – Freighter Building (Non A/C) Offices (A/C) 1 st Floor Mezzanine Office	\$13.00 \$13.25 \$13.25	\$13.00 (1) \$13.50 (1) \$13.00
716A	Cargo – Freighter Building (Non A/C) Offices (A/C) 2nd Floor Offices (A/C) 1st Floor Airsides Ramp Landside Ramp	\$13.50 (11)(15) \$13.60 (11)(15) \$15.00 (11) Included in Cargo Rent Included in Cargo Rent	\$13.50 (1) \$13.60 \$15.00 (1) Included in Cargo Rent Included in Cargo Rent
716B-J	Cargo – Freighter Building (Non A/C) Offices (A/C) 2nd Floor Offices (A/C) 1st Floor Airsides Ramp Landside Ramp	\$12.50 (11)(15) \$12.60 (11)(15) \$15.00 (11) Included in Cargo Rent Included in Cargo Rent	\$12.50 (1) \$12.60 \$15.00 Included in Cargo Rent Included in Cargo Rent
719 (2122)	Governmental Service Bldg. - CCC	\$19.75 (3)	\$19.75
741 (2204)	Decompression chamber	\$52,000 per year	\$52,000 per year
805	Cargo – Freighter Building (Non A/C) Offices (A/C)	\$12.25 \$12.25	\$12.25 (1) \$12.25
807	UPS (Cargo – Freighter Building)	Tenant Constructed Building	
812	PPQ Building	MDAD/Tenant Constructed Building	
815	USDA Veterinary Services	MDAD/Tenant Constructed Building	
820 (1011)	Warehouse (Non A/C) Offices (A/C)	\$9.50 \$11.00	\$9.50 (1) \$11.00
831	Office/Warehouse (FedEx)	Tenant Constructed Building	
836 (1054)	GSE Office/Shop (AC)	Demolished	Demolished
839	Hangar (Signature Flight Center) Offices (A/C)	\$12.00 \$16.00	\$12.00 \$16.00
840	Signature Flight Support (Terminal)	\$20.00	\$20.00
844 (101)	Hangar - Storage (Non A/C) Offices (A/C) Storage (A/C)	\$9.25 (1) \$11.75 \$6.75	\$9.25 (1) \$11.75 \$6.75
845 (100)	Offices (A/C) Warehouse (Non-A/C) Warehouse (A/C) Warehouse Office (A/C) Simulator (A/C) Atrium Space—1st Floor (A/C) Atrium Space—Above 1st Floor (A/C)	\$16.50 (3) \$10.75 (3) \$12.00 (3) \$12.15 (3) \$13.00 \$19.00 (3) \$19.00 (3)	\$16.50 (2) \$10.75 \$12.00 \$12.15 \$13.00 \$19.00 (2) \$19.00 (2)
850	AAR ACS (Maintenance Hangar)	Tenant constructed building	
855 (53)	Storage (A/C)	\$5.75	\$6.00
856 (52)	Storage (A/C)	\$5.50	\$6.00
857 (55)	Wash Rack & Drum Storage	\$6.00	\$6.00

* Rent includes land, water, sewer and common area janitorial.

Building Rental Rates Miami International Airport
Effective as of October 2020 (continued)

Building #. (Old bldg. #)	Building Description	Actual Rate 2019-2020	Proposed Rate 2020-2021
861-862 (60)	Aircraft—Hangars (#6 and #7) Shops (A/C) Storage (A/C) Offices (A/C)	\$10.00 (1) (12) \$5.25 (12) \$5.25 (12) \$6.50 (12)	\$10.10 (4) \$6.00 (4) \$6.00 (4) \$6.50 (4)
863 (60-A)	Engine Overhaul and Service Storage 2nd Floor Offices (A/C) 1 st Floor Offices (A/C)	\$5.50 \$4.00 (22) \$10.00 \$8.00	\$5.50 \$4.00 (3) \$10.00 \$8.00
871 (48)	Hangar (Non A/C) Office (A/C) Shop and storage	\$9.00 (1) \$5.50 \$4.25 (22)	\$9.00 (1) \$5.50 \$4.25 (3)
875 (43)	Flight Academy Office (A/C) Pan Am Office (A/C) Individual tenants Simulator Bays (A/C)	\$10.50 (19) \$15.00 (3) \$9.00	\$10.50 \$15.00 \$9.00
888 (35-35A)	Maint. And Training (A/C) Office Space (A/C)	Demolished	Demolished
890 (25)	Hangar (Non A/C) Office Space (A/C) Storage (A/C) Shops (A/C)	Tenant Constructed Building	
891 (24)	First Floor: Maintenance-Shops (A/C) Second Floor: Shops (A/C) Third Floor: Shops (A/C) Fourth Floor: Storage (Non A/C)	Tenant Constructed Building	
896 (22)	Hangar—Maintenance (Non A/C) Office Space (A/C) 1 st Floor Office Space (A/C) 2 nd Floor Shops—Maintenance (A/C) Third Floor: Storage Composite Shop Paint Booth	\$10.10 (1) \$10.00 \$7.75 \$5.75 \$3.00 \$10.00 \$10.00	\$10.10 (1) \$10.00 \$7.75 \$5.75 \$3.00 \$10.00 \$10.00

***Building Rental Rates Miami International Airport
Effective as of October 2020 (continued)***

Building #. (Old bldg. #)	Building Description	Actual Rate 2019-2020	Proposed Rate 2020-2021
909	Flight Training Facility (Airbus)	Tenant Constructed Building	
916	Cargo Warehouse (Development)	Tenant Constructed Building	
919 (5A)	Office - Entire Building (A/C) Office - Per Floor or less (A/C) Office - Second Floor (Full Service) Storage Loading Dock	\$10.50 \$13.00 \$18.00 \$6.00 (22) \$1.75	\$10.50 \$13.00 \$18.00 \$6.00 (3) \$1.75
2082	Warehouse (El Dorado) Offices (A/C)	\$2.50 \$2.50	\$2.50 \$2.50
3010	Cabstand Cafe (A/C)	\$30.00 (5)	\$30.00 (5)
3030	Offices	\$10.00 (12)	\$10.00
3030A	Offices (A/C)—Wing of 3030	\$8.50	\$9.00
3032	Cafeteria (Non A/C) Cafeteria (A/C)	\$4.75 \$6.50	\$4.75 \$6.50
3033	Police Station (A/C)	\$10.00	\$10.00
3037	Maintenance-Garage (Non A/C) Offices (A/C)	\$6.00 \$6.50	\$7.00 \$6.50
3038	Building Services—Maintenance/Office (A/C)	\$6.50	\$6.50
3040	Maintenance Shops (Non A/C) and Offices (A/C)	\$6.60 (19)	\$6.60
3034	Triturator	<i>Decommissioned</i>	<i>Decommissioned</i>

² This rate excludes interior janitorial service

* **The 2006 rate included land, whereas the rates from 2010 and after are for the building only and the land rate and paving rate is charged separately.**

***Building Rental Rates Miami International Airport
As of October 2020 (continued)***

Building #. (Old bldg. #)	Building Description	Actual Rate 2019-2020	Proposed Rate 2020-2021
3046	Offices (A/C) Shop	\$10.00 \$6.25 (22)	\$10.00 \$6.25 (3)
3047	Offices (A/C)	\$10.00	\$10.00
3048	Offices (A/C)	\$10.00	\$10.00
3049	Maintenance Garage (Non A/C)	\$7.00	\$7.00
3050	Administration Building (Multiple Tenancy)	\$14.25	\$14.25
3074	In-flight Caterers: Kitchen (Non A/C) Kitchen (A/C)	\$8.50 (22)	\$8.50 (3)
3077	Triturator	\$22,000/yr. (23)	\$22,000/yr. (6)
3078	Fuel Building (A/C) Offices (A/C)	\$10.00 \$10.25	\$10.00 \$10.25
3089	Parking Garage	\$60.00/mo. (4)	\$60.00/mo.
3091	Maintenance/Offices (A/C)	\$7.75	\$8.00
3094	Parking Garage	\$60.00/mo. (4)	\$60.00/mo.
3095-A	Hangar Hangar Area (Non A/C) – 1 st Floor Office – 1 st and 2 nd Floors Shops & Storage 1st and 2 nd Floors	\$11.75 \$9.00 (22) \$8.00 (22)	\$12.00 \$9.00 \$8.00
3095-B	Offices (as renovated): Offices—Entire Building (A/C) Offices—Per Floor (A/C) Offices—Penthouse (A/C)	\$11.00 \$17.00 (3) \$20.00 (3)	\$11.00 \$17.00 \$20.00
3100	Maintenance Garage (Non A/C)	Demolished	Demolished
3101	Maintenance Garage—Storage (Non A/C)	\$6.00	\$6.00
3110	Offices—Security	\$21.00	\$21.00
3150	Offices (A/C)	\$11.50	\$11.50
3151	Maintenance—Shop (Non A/C) Offices (A/C)	\$6.00 \$11.00	\$6.00 \$11.00
3152	Service Station (Non A/C)	\$5.75	\$5.75
3153	Car Wash Building	\$5.75	\$5.75
3241	RCC Office (A/C) RCC Storage (A/C)	\$26.00 (20) \$15.00 (20)	\$26.00 (7) \$15.00 (7)

***Building Rental Rates Miami International Airport
Effective as of October 2020 (continued)***

Building #. (Old bldg. #)	Building Description	Actual Rate 2019-2020	Proposed Rate 2020-2021
4001	Traffic Control Center	\$13.00	\$13.00
4002	Public Works Office	\$12.00	\$12.00
4003	Corrections Office (A/C)	\$7.50	\$7.50
4003A	Offices (A/C) Storage (Non A/C)	\$7.00 \$6.00	\$7.00 \$6.00
4004	Sign Shop (Non A/C)	\$6.00	\$6.00
MIC	Platform - Unfinished space	\$30.00	\$30.00
1775 NW 70 th Avenue	Warehouse Office Entire Building	N/A N/A N/A	TBA TBA TBA

Loading Dock

Loading dock area has an additional rate of \$1.75 per square foot, per year.

Utility Rates

The rental rates herein exclude utilities (water, sewer and electric), except as footnoted. Utilities shall be applied as a separate charge. These rates are not estimated by the appraiser and are supplied by MDAD.

Trailer Parking & Modular Units

Trailer parking has a rate of \$250.00 per space per month for single wide trailers, \$500.00 per space per month for double wide trailers and \$600.00 per space per month for a triple wide. Modular units are authorized for temporary use by tenants for office or storage purposes, preceding and/or during construction, and have the rates of \$250.00 per space per month for single wide trailers, \$500.00 per space per month for double wide trailers and \$650.00 per space per month for a triple wide.

Automobile Parking

Automobile parking (grade level & non-garage space) has a charge of \$55.00 per space per month. Limousines that occupy no more than a standard parking space/area will be charged \$55.00 per month. Larger limousines have a rate of \$100.00 per month. Tour buses and buses more than eight (8) feet wide and 18 feet long have a rate of \$200.00 per month.

Antennae Installations

Any antenna and its associated equipment for data collection, reception, or transmission related to (i) the monitoring of aircraft movements in the air or on the ground or (ii) any other aviation activity as determined by MDAD, shall pay a fee of \$2,500.00 annually per antenna, plus rental charges for the land or any facility on which or in which any antenna or associated equipment is installed, based on MDAD's sole determination of the dimensions of the land or facility allocable to such antenna or equipment. For all other antenna and associated equipment for non-aviation or specialty use, fees and rental charges in an amount not to exceed \$250,000.00 annually shall be separately imposed by MDAD as a condition of a lease, license, or permit applicable to the installation of the antenna or equipment.

Full Service

This includes land rent, janitorial and utilities.

The following footnotes are applicable to the “Building Rental Rates-MIA” items set forth above:

Note: Footnotes from previous years have been modified to simplify the rental rates. There are additional considerations that may affect some tenants which no longer have an assigned footnote. The new footnotes now apply solely for identifying the estimated market rents. Additional items in the previous footnotes, and no longer included in the new footnotes, include the following:

- Non-airline tenants shall pay the said per square foot rate or 3% of all gross revenues produced from providing aircraft maintenance services to others, whichever is greater.
- Airline tenants shall pay 3% of all gross revenues produced from providing aircraft maintenance services to others in addition to the said per square foot rental rates.
- Additional rent may be applicable to cover costs of 40-year recertification and costs of repairs to comply with life safety codes.
- In addition to the rent some tenants may pay an opportunity fee of 7.5% of the revenues collected. In this situation the tenant is responsible for all maintenance and repairs.
- Rate includes amortization of 40-year recertification and cost of repairs to comply with life safety codes.
- Common area maintenance is not charged by MDAD.

Most of the multi-tenant office rentals have an estimated rent and there is no additional charge for the underlying land.

Most of the cargo and hangar buildings have an estimated market rent and in addition the tenant pays for The underling land rent.

Most of the buildings and the spaces are not separately metered. Miami-Dade County Aviation Department has applicable rate charges to the tenant for electric, air conditioning, et al. These rates are not part of the estimated market rents and are separate from this document.

1. In addition to the building rate charge there is a land rate charge for “Land Under Building” which is added to the building rate.
2. Rent includes electricity, water, and sewer. There is no land charge for office space.
3. If A/C space, tenant pays applicable electric and is responsible for A/C repair and replacement.
4. Hangar 861 and 862 tenants are making improvements and are only paying land rent. Appraised rate includes a charge of \$.10 per square foot as a trash removal fee.
5. Tenant pays minimum guarantee.
6. In addition to rent, tenant pays an opportunity fee of 7.5% of the revenues collected. Tenant is responsible for all maintenance and repairs.
7. Includes land rent and janitorial. Utilities are paid by rental car agencies in MIC.

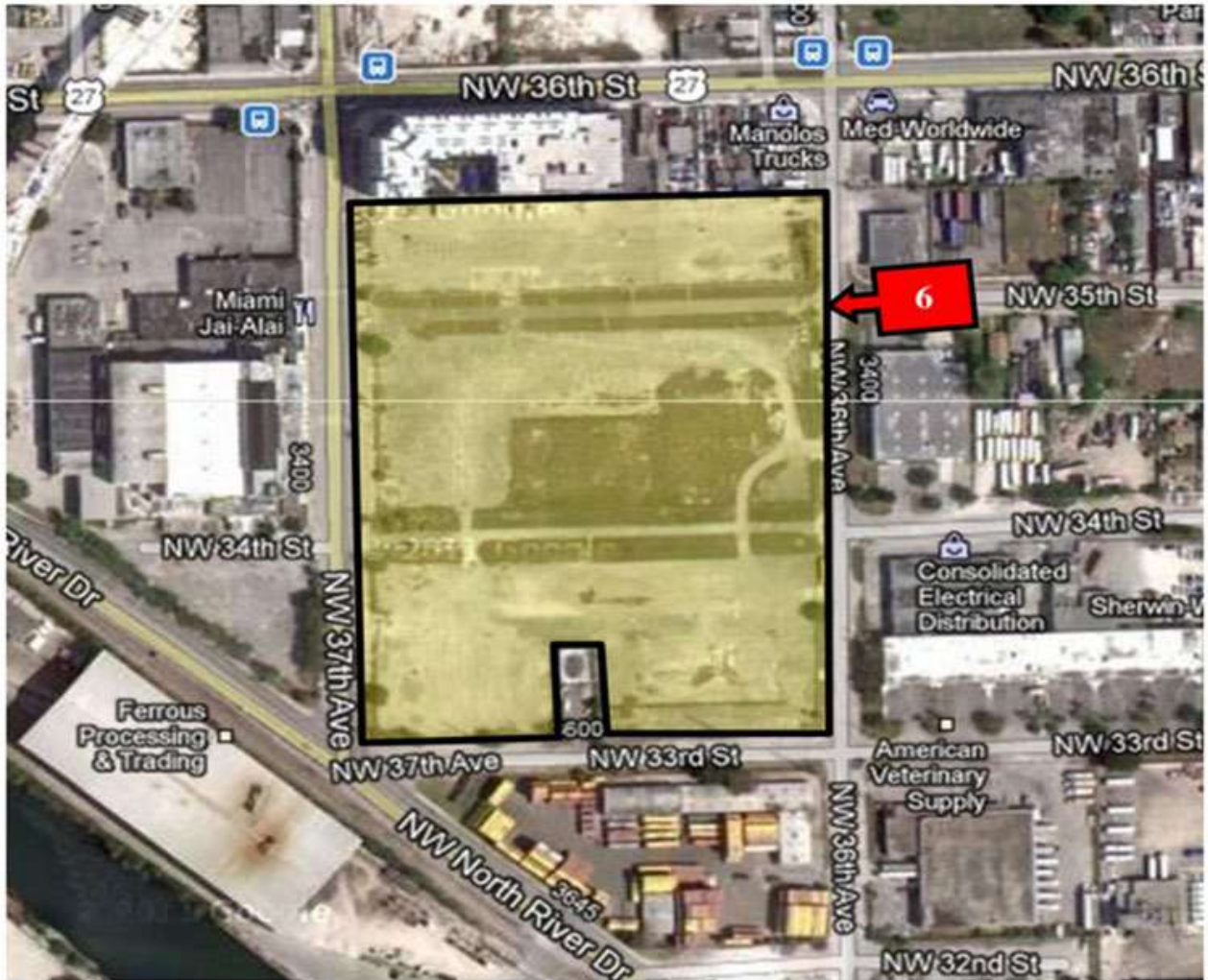
Land Zones 1, 2, 3, 4, 5 & 7



Legend

- Land Zone 1 
- Land Zone 2 
- Land Zone 3 
- Land Zone 4 
- Land Zone 5 
- Land Zone 7 

Land Zone 6



FUEL FARM TAB

**FUEL FLOWAGE FEES
MIAMI INTERNATIONAL AIRPORT
Effective October 1, 2020**

		STORAGE	TRUCK	HYDRANT
Direct Expenses		\$3,429,587	\$816,897	\$963,678
Indirect Expenses		640,386	0	6,143
Total Operating Expenses		\$4,069,973	\$816,897	\$969,821
Debt Service		3,699,566	594,567	4,844,770
Reserve Maintenance Fund Deposit		--	--	--
Management Fee		521,566		
Less: County Credit				
Total Requirement	[A]	\$8,291,105	\$1,411,464	\$5,814,591
Estimated Gallonage	[B]	889,399,912	249,583,445	639,816,467
Total Cost per Gallon	[C=A/B]	\$0.009322	\$0.005655	\$0.009088
Add Storage (a)	[D]		\$0.009322	\$0.009322
Fuel Flowage Fee	[C+D]		\$0.014977	\$0.018410

(a) Storage costs are spread amongst the truck and hydrant users equally.

Fuel Flowage Fee Calculation Explanation

Because MDAD operates the fuel farm at MIA, it strives to recover the operating and capital costs related to the fuel farm directly from the fuel consumers through the fuel flowage fee. The operating costs are determined through the annual budget process by a fuel management company and reviewed by the Environmental Division. The cost is allocated amongst the following three areas: storage (represents the cost related to the above ground fuel storage tanks owned by MDAD), hydrant fueling (represents any costs related to providing fuel to air carriers through the hydrant system) and truck (represents any costs related to providing fuel to air carriers through fuel trucks rather than using the hydrant system). In addition, the costs of any assets acquired for the fuel farm are categorized by these three areas depending on how the asset is utilized. These assets are then included in the costs by amortizing them over their useful life using MDAD's current cost of capital. After aggregating these costs, a fuel flowage fee is calculated by dividing these costs by the estimated gallons to be purchased (either through truck or hydrant) during the fiscal year.

A separate fuel flowage fee is charged for general aviation users.

Opportunity Fee on fueling service into commercial aircraft does not apply.

GENERAL AVIATION TAB

**GENERAL AVIATION AIRPORT FEES AND CHARGES
MIAMI INTERNATIONAL AIRPORT
Effective October 1, 2020**

Operational Closure Fee—a fee of **\$4,800.00 per day (or portion thereof), or \$200.00 per hour for government entities** shall be required for operational closure at the Training and Transition Airport (or part thereof) or General Aviation Airport (or part thereof) to cover costs incurred by safety officer and vehicle required by the Federal Aviation Administration.

Aerial Advertising Fee—a fee of **\$14.00** will be charged for aerial advertising (banner towing) at the General Aviation Airports. This fee will apply to the combination of banner pick-up and recovery, and will not exceed three (3) charges per day, per aircraft.

Aircraft Parking at General Aviation Airports— For M-1 aircraft, the same rates charged at Miami International Airport for 1 – 5 days. The M-1 daily base rate is currently **\$15.00 per day** and will apply for the entire parking period. For all other aircraft, the same rates charged at MIA but the rates shall increase over time as reflected on the attached aircraft parking rates schedule. Please reference the Aircraft Parking Rates in the Airside section of this book.

SEE SCHEDULE AT THE END OF THE AIRSIDE SECTION FOR AIRCRAFT PARKING FEES WHICH ARE LISTED BY AIRCRAFT TYPE.

Conference Room Rental Fee (Miami Executive and Opa-Locka Airports)—the rate for non-profit entities shall be **\$10.00 per use**; the rate for other than non-profit entities shall be **\$50.00 per use**; the use for all entities shall be limited to four (4) hours.

Off-Road Vehicle Parking Fee at Training and Transition Airport—the rate shall be **\$50.00 per vehicle, per fiscal year** (October 1 through September 30) **or fraction thereof**.

Fuel flowage fee at the General Aviation Airports—the rate shall be **\$0.08 per gallon**.

Usage of Training and Transition Airport is \$28.00 per approach.

AOA (Aircraft Operating Area) Decal for General Aviation Airport Commercial Vehicles and Equipment – the fee shall be **\$10.00 per decal**. AOA decals provide for the identification and regulation of airfield traffic. AOA decals also provide verification that vehicles and equipment are properly insured.

AOA Decal for General Aviation Airport Privately Owned Vehicles and Equipment – the fee shall be **\$5.00 per decal**. AOA decals provide for the identification and regulation of airfield traffic. AOA decals also provide verification that vehicles and equipment are properly insured.

AOA Decal Replacement Fee for General Aviation Airport Vehicles and Equipment – the fee shall be **\$10.00 per decal** and covers costs associated with research, cancellation and reissuance of each decal.

AOA Decal Late Application Fee – the fee shall be **\$10.00 per decal** and covers expedited processing times requiring additional manpower.

Miami - Opa-Locka Executive Airport (OPF) 2021 Property Rental Summary				
LAND RENTAL		Rent/Sq. Ft./ Year		
		Actual FY2019	Actual FY2020	Actual FY2021
Aeronautical Land Nonaeronautical Land – appraise individually case-by-case as necessary		\$0.26	\$0.28	\$0.29
PAVEMENT RENTAL		Rent/Sq. Ft./ Year		
		Actual FY2019	Actual FY2020	Actual FY2021
Pavement		\$0.05	\$0.05	\$0.05
Non-Aviation Land Lease Number/Tenant		Rent/Sq. Ft./ Year		
		Actual FY2019	Actual FY2020	Actual FY2020
Lease No. O-216 Miami-Dade Dept. of Corrections		\$1.10	\$1.20	\$1.20
Lease No. O-1519 Miami-Dade Water & Sewer Dept.		\$0.90	\$0.95	\$0.95
Lease No. O-8088 Schaecter – clear zone (2)		\$0.534	\$0.550	\$0.567
Lease No. O-7889 Miami Lakes Office Condo - clearzone		\$0.60	\$0.65	\$0.65
BUILDING RENTAL (1) Aviation Tenants		Rent/Sq. Ft./ Year		
		Actual FY2019	Actual FY2020	Actual FY2021
Building	40E (3)	\$8.30	\$8.55	\$8.55
Building	40C (2)	\$7.95	\$8.15	\$8.15
Building	40W (1)	\$8.10	\$8.30	\$8.30
Building	41E (3)	\$7.95	\$8.15	\$8.15
Building	41C (2)	\$7.95	\$8.15	\$8.15
Building	41W (1)	\$7.95	\$8.15	\$8.15
Building	45	\$6.90	\$7.20	\$7.20
Building	46	\$13.15	\$13.50	\$13.50
Building	47	\$7.10	\$7.30	\$7.30
Building	107 Office	\$19.00	\$19.00	\$19.00
Building	107 Dorm	\$20.00	\$20.00	\$20.00
Note 1: Annual rent/SF excluding land or pavement Note 2: Rent subject to annual 3% increase Last Revised 6/1/2020 OPF.FY21				

Miami Executive Airport (TMB) 2021 Property Rental Summary				
LAND RENTAL		Rent/Sq. Ft./ Year		
		Actual FY2019	Actual FY2020	Actual FY2021
Aeronautical Land Non-aeronautical Land – appraise individually case-by-case as necessary		\$0.23	\$0.24	\$0.24
PAVEMENT RENTAL		Rent/Sq. Ft./ Year		
		Actual FY2019	Actual FY2020	Actual FY2021
Pavement		\$0.05	\$0.05	\$0.05
FARM LAND		Rent/Acre/ Year		
		Actual FY2019	Actual FY2020	Actual FY2021
Farm Land – minimum bid		\$500	\$500	\$500
BUILDING RENTAL		Rent/Sq. Ft./ Year		
		Actual FY2019	Actual FY2020	Actual FY2021
Aviation Tenants				
Building	102	\$3.35	\$3.35	\$3.35
Building	109	\$3.60	\$3.60	\$3.60
	109A	\$3.35	\$3.35	\$3.35
	109B	\$3.35	\$3.35	\$3.35
Building	114	\$3.30	\$3.30	\$3.30
Building	121	\$5.60	\$5.80	\$5.80
Building	123	\$5.55	\$5.75	\$5.75
Building	221	\$3.65	\$3.65	\$3.65
Building	222	\$2.30	\$2.55	\$2.55
Building	247	\$6.10	\$6.30	\$6.30
Building	504	\$4.95	\$4.95	\$4.95
Building	225	\$3.40	\$3.40	\$3.40
Building	226	\$1.25	\$1.30	\$1.30
Building	227	\$3.75	\$3.75	\$3.75
Building	228	\$6.45	\$6.70	\$6.70
Building	229	\$6.20	\$6.40	\$6.40
Building	501	\$8.10	\$8.30	\$8.30
Building	507	\$16.50	\$16.50	\$16.50
Last Revised TMB.FY21		6/1/2020		

Miami Homestead General Aviation Airport (X51) 2021 Property Rental Summary				
LAND RENTAL		Rent/Sq. Ft./ Year		
		Actual FY2019	Actual FY2020	Actual FY2021
Aeronautical Land		\$0.07	\$0.08	\$0.08
PAVEMENT RENTAL		Rent/Sq. Ft./ Year		
		Actual FY2019	Actual FY2020	Actual FY2021
Pavement		\$0.05	\$0.05	\$0.05
FARM LAND		Rent/Acre/ Year		
		Actual FY2019	Actual FY2020	Actual FY2021
Farm Land – minimum bid		\$450	\$450	\$450
BUILDING RENTAL (1) Aviation Tenants		Rent/Sq. Ft./ Year		
		Actual FY2019	Actual FY2020	Actual FY2021
Building	2	\$3.85	\$3.85	\$3.85
	3	\$2.65	\$2.80	\$2.80
Building	5	\$3.55	\$3.65	\$3.65
Building	10	\$3.85	\$3.85	\$3.85
Building	14	\$2.65	\$2.80	\$2.80
Note 1: Annual rent/SF excluding land or pavement Last Revised 6/1/2020 X51.FY21				

TELECOMMUNICATIONS TAB

**TELECOMMUNICATION FEES
MIAMI INTERNATIONAL AIRPORT
Effective October 1, 2020**

Wireless Services Providers—the annual rates shall be as follows:

- \$250,000.00 per cellular telephone (cell site)

Cable Television (CATV) Recovery Fee

- \$60.00 per month per location at private offices and break-rooms
- \$215.00 per month per location at bars, restaurants and clubs

Coaxial Cable Recovery Fee

- Recovery Fee: \$35.00 per month
- Installation: \$150.00 per location
- Additional work: \$75.00 per hour plus material at cost plus 25%
- Equipment rental: \$20.00 per month, per television
- Unauthorized Service: \$1,000.00 per location per month plus monthly fee

Wireless Data Port with Internet Access Fee - \$47.50 per device, per month (airport tenants, airlines and concessionaires).

Wireless Network Access Fee for Multiple Users and Proprietary Tenants - \$600.00 per month, to provide MDAD internet services and Wifi to airline lounges and other proprietary space.

Offsite FIDS Rate

Network Port Costs (Monthly)

- \$60.00 per PC connection. Each PC can drive two monitors.

Equipment Rental Costs (Monthly)

- \$50.60 for 42" LCD Display
- \$4.22 for monitor mounting and security locks
- \$13.49 per PC for Web FIDS
- \$3.37 per Video Extender to drive monitor from PC
- \$7.00 for Dual Video Output Card

Telecommunications Fees
Miami International Airport
Voice and Data Network - STS Prices
As of October 2020

Description	Mo. Unit Rental	Unit Install
1) Switch Access		
Meridian One Port	\$15.00	\$66.65
Advanced Features (Conference Calling, Speed Calling, Etc.)	Included w/Phone	Waived
2) Network Access - Public		
Single Line Access	\$22.50	\$66.65
Network Access	\$61.25	\$66.65
3) System - Terminal Equipment		
M3902 Basic Rel. 3 Digital Phone - 1 Line	\$7.45	\$133.30
M3903 Enhanced Rel. 3 Digital Phone - 3 Line	\$17.65	\$133.30
M3904 Professional Rel. 3 Phone - 5 Line	\$22.43	\$133.30
M3904 Add On Module	\$7.48	\$66.65
M3905 Call Center Telephone Rel 3	\$24.21	\$133.30
Analog Set	\$4.21	\$133.30
Companion Wireless Telephone	\$19.43	\$133.30
Conference Phone	\$34.66	\$133.30
Loud Bell	\$7.90	Per Quote
Handsfree Headset	\$13.36	\$133.30
4) System - Other		
Voice Mail Box	\$6.25	\$33.33
Authorization Code	\$1.25	\$33.33
Voice Cable (Fax, Modem, or Clock Programming)	\$3.28	\$66.65
Level 5 Data Cable	\$3.28	Per Quote
Ethernet Port	\$75.00	\$133.30
Internet Access 6MB - 1 Public Static IP Address	\$106.25	\$133.30
Internet Access 12MB - 1 Public Static IP Address	\$212.50	\$266.60
Additional Static IP Address	\$12.50	\$66.65
Wireless Data Ports with Internet Access	\$47.50	N/A
Engineering and Configuration of WiFi Ports	N/A	\$533.20
Wireless Network Access for Multiple Users	\$600.00	\$1,066.40
One Strand foot of Fiber (MM or SM) (')	\$0.019	Per Quote
SC Connector in Fiber Patch Panel	\$4.20	\$33.33
Fiber Termination	N/A	\$133.30
Copper Cable per pair foot (')	\$0.006	Per Quote
Black filled Copper Cables per pair foot (')	\$0.006	Per Quote
25 pair Copper Cable per pair foot (')	\$0.038	Per Quote

Notes:

1. All customers require a quote and MDAD contract for installation and monthly service.
2. Internet Access is a service provided using the MDAD LAN. An Ethernet Port and CAT 5 cable are required for the service.
3. Cable and conduit installation quoted if required for service.

MISCELLANEOUS TAB

**MISCELLANEOUS FEES AND CHARGES
MIAMI INTERNATIONAL AIRPORT
Effective October 1, 2020**

Opportunity Fee (see below for exclusions)*

Opportunity Fee for Third-Party Vendors providing services to tenants at Miami International Airport—an opportunity fee of 7% of gross revenues will be imposed on third-party vendors contracted to provide services at MIA. The opportunity fee is subject to upward or downward adjustments to the extent authorized in Resolution No. R-442-02, and not applicable to vendors who provide goods to concessionaires for resale to the public.

An opportunity fee of 16% - 25% of gross revenues will be imposed on third-party vendors making sales to the public at Miami International Airport (subject to upward or downward adjustments to the extent authorized in Resolution No. R-442-02).

Opportunity fees for aircraft Maintenance Repair Overhaul (MRO) operators at Miami International Airport will be 3% (three percent) of gross revenues. Opportunity fees for vending machine operators at Miami International Airport will be 30% (thirty percent) of gross revenues. Opportunity fees for fueling services into commercial aircraft at Miami International Airport will not apply. All other third-party vendors will be maintained at a 7% charge on all gross revenues. Opportunity fees on vending machines are being revised to reflect rates consistent with MIA concessionaire vending machines.

- * The opportunity fees listed in this section do not apply to third-party vendors providing goods and services at the County's General Aviation Airports. However, all other fees listed in the other sections of this Summary of Rates, Fees and Charges, including but not limited to fuel flowage fees, do apply at the County's General Aviation Airports.

The opportunity fees listed in this section also do not apply to goods or services being provided to a local, state, or federal governmental agency conducting operations at any of the County's Airports.

Penalty Fee for Employing Unpermitted Service Vendors

Penalty fees will be assessed to Aviation Department tenants who employ service vendors which operate without an Aviation Department permit.

- A penalty fee of \$500.00 will be assessed for each unpermitted vendor, to be cured within 60 days of MDAD notice to the Tenant or user.
- Incremental assessments of \$500.00 for each 30-day period after the cure date will be imposed until condition is cured.

Cure is defined as the service provider initiating and completing the permit process and paying all fees due from the period in which there was no permit. If the permit is being processed and the service provider is cooperating in good faith, no further penalties will be assessed after the first 60 days.

Miscellaneous Air Carrier Fees

- **Disruptive Passenger Fee**—airlines will be charged for actual costs incurred by the Department for disruptive passengers resulting from delayed or canceled flights.
- **GSE (Ground Service Equipment) Impoundment Fee**—a GSE impoundment fee will be imposed at a rate of \$10.00 per day and per GSE equipment for the first 15 days. From 16 to 30 days, the impoundment fee will increase to \$20.00 per day and per impoundment. At 31+ days, the impound fee will increase to \$40.00 per day and per impoundment until the impounded equipment has been released.
- **Aircraft Handling Chock Fee at the General Aviation Center or Remote Locations** – The fee shall be \$100.00 per aircraft.

Employee (MDAD Tenant) ID Badge Fees

- **Employee Identification Badge Fee**—the fee shall be **\$20.00** for each ID badge Issuance and Renewal.
- **Lost or Unaccounted Employee ID Badge Fee**—the fee shall be **\$75.00 for the 1st replacement and \$100.00 for the 2nd replacement.**
- **Failure to NOTIFY and RETURN a Terminated Employee ID Badge Fee** – the fee shall be **\$100.00 per badge.**
- **TSA 5% Rule Violation Fee** – the fee shall be **\$125.00 per badge** and will be assessed when unreported lost, unaccounted for, or unreturned badges exceed 5% of total badges issued. This fee will not apply to badges already charged under the “Lost or Unaccounted for” rule.
- **Fingerprinting Fee**—the fee shall be **\$38.00 per individual** fingerprinted. Of this amount, \$29.00 is forwarded to TSA while MDAD retains \$9.00 for administrative fee.

Airside Vehicle, Training and Decal/Permit Replacement Recommended Fees

- **Aircraft Operating Area (AOA) Decals** – the fee shall be **\$20.00 per vehicle.**
- **AOA Decals (Late Renewal, Lost or Unaccounted)** – the fee shall be **\$75.00 for the 1st replacement and \$100.00 for the 2nd replacement.**
- **AOA Driver Training** – the fee shall be **\$15.00 per person.**
- **AOA Movement Area Training** – the fee shall be **\$15.00 per person.**
- **Loading Bridge Training** – the fee shall be **\$15.00 per person.**
- **AOA Driver Training, Movement Area, Loading Bridge Training Permit Replacement Fee** – the fee shall be **\$15.00 per permit.**
- **AOA Decal Late Application Fee** – the fee shall be **\$10.00 per decal** and covers expedited processing time requiring additional manpower.

Into-Plane Fueling Recommended Fees

- **Non-commercial Aircraft Fueling** - remains at **\$0.08 per gallon** (effective 10/1/02).

Airline VIP Clubs

- **Opportunity Fee**—the Lessee shall pay 35% of the Department’s basic VIP Club Fee received (capped at \$8.40 per visitor), as may be adjusted from time-to-time, for each non-member visitor, as defined in the VIP Club Agreement, Article 2.01 (Use of Premises) that uses its club facilities.
- **Concession Fee**—the Lessee shall pay eighteen (18%) percent of the monthly Gross Revenue generated from liquor sales and ten (10%) percent of the monthly Gross Revenues generated from the sale of all other amenities granted the Lessee.

MISCELLANEOUS FEES AND CHARGES (continued)

Airspace Evaluation¹

The fee shall be \$1,000.00 per each Airspace Evaluation submittal to recover costs associated with the technical review of proposed permanent structures that may be impacted by airport height zoning and the written comments prepared by staff. Staff may provide a range of maximum allowable heights to assist a developer in the planning process. This airspace evaluation is cursory in nature and should not serve or be construed to be an MDAD-issued Airspace/Land Use Letter of Determination.

Preliminary Airspace/Land Use Letter of Determination

The fee shall be \$1,700.00 per project. This MDAD issued determination is for proposed use and/or placement of a permanent structure on a parcel of land impacted by airport zoning. This letter is required for all permanent structures reaching or exceeding 200 feet Above Ground Level and requires specific plan submittal (both site and architectural elevation plans). An exception would be a series of poles or trees (or similar structure) in which case, the first would be \$1,700.00 and there would be a \$45.00 fee for each additional coordinate associated with the project (which may be waived at MDAD's discretion).

Final Airspace/Land Use Letter of Determination

The fee shall be \$1,700.00 per project. Once site and architectural elevation plans are finalized and the requestor has received the FAA determinations for the project, the requestor must obtain a Final Airspace/Land Use Letter of Determination from MDAD. This letter references the FAA determinations. No fee assessed if the proponent has previously paid a fee for the Preliminary Airspace/Land Use Letter of Determination which was issued and has not expired and the plans/FAA Study Numbers remain the same.

Variance Application Fee (Airport Zoning Regulations)

The fee shall be \$1,700.00 per each Variance of Airport Zoning Regulations. Miami-Dade County Code Sec. 33-335 establishes procedures, requirements, and restrictions for variances of airport zoning regulations, including the variance process authorized by Ordinance No. 18-40. Variances are to be decided administratively by MDAD, with appeal to the Board of County Commissioners in a quasi-judicial zoning hearing pursuant to section 33-314(C)(6). Only the County may grant variances of this article, regardless of whether the subject property is located in incorporated or unincorporated Miami-Dade County.

Letter of Determination Fee (Land Use Zoning Analysis)¹

The fee shall be \$700.00 per each Land Use Zoning Analysis Request. The Aviation Department has been providing a free-of-cost service for the review, coordination and determination of land use compatibility impacts as mandated by the Florida State Statutes, Chapter 333 since 1993. Upon final review and analysis, the Aviation Department issues a "Letter of Determination" to the respective requestors. This review includes the assurance that proposed developments comply with Miami-Dade County's Airport Zoning requirements.

MISCELLANEOUS FEES AND CHARGES (continued)

MDAD Technical Reviews and Written Comments¹

Fees for written comments (to include comments for conceptual development plans) were implemented to recover costs associated with the technical review of proposed land-uses and structures and the issuance of written comments where airspace/land use and land use Letter of Determination (LOD) criteria does not otherwise apply. This fee also applies to conceptual plans in which case MDAD’s comments are requested.

Fees for Development Impact Committee (DIC) or Equivalent Large-Scale Zoning Hearing Application were implemented to recover costs associated with MDAD Planning Division’s review and written comments for the County’s Developmental Impact Committee (DIC) zoning hearing applications or any other type of large scale applications where Airspace/Land-Use and Land-Use Letter of Determination (LOD) criteria does not otherwise apply. Fee will be waived if proponent pays for LOD. If the DIC application is conceptual during the review time and when department comments are due, MDAD will charge the \$360.00 even if an Airspace/Land-Use LOD is required in the future.

Fees were implemented to recover costs associated with requests for new MDAD-issued Airspace/Land-Use or Land-Use Letter of Determination (LOD) which provide a time extension for an existing MDAD-issued LOD nearing expiration or already expired. This new LOD is only for an extension of time. All referenced data including, but not limited to, the land use, structure elevation, site plans, address or impacted property folio numbers as well as the actual approval must be identical to the data provided in the previously approved MDAD-issued LOD.

¹ *The Miami-Dade Aviation Department (MDAD) may waive any fee provided for herein for applicants or users that are federal, state, or local governmental or military units, or other applicants or users under circumstances determined by MDAD to justify a waiver or reduction of the fee.*

- Cell towers and other structures under 200 feet above mean sea level – the fee shall be **\$360.00**
- Request for written comments – the fee shall be **\$360.00**
- Request for written comments (revised plans) – the fee shall be **\$90.00**
- Development Impact Committee or Equivalent Large-Scale Zoning Hearing Application – the fee shall be **\$360.00**
- Permissible Crane (or Equipment) Height Determination – the fee shall be **\$360.00**
- Permissible Crane (or Equipment) Height Determination Extension Fee – the fee shall be **\$90.00**
- Permissible Crane (or Equipment) Height Determination Additional Coordinates – the fee shall be **\$45.00** (per set)
- Request for New Letter of Determination Due to Expiration – the fee shall be **\$360.00**

Passenger Facility Charge (PFC) – In accordance with 14 CFR Part 158 of the Federal Aviation Regulations, MDAD (Miami-Dade Aviation Department) has been authorized by the FAA to require any commercial air carrier operating at Miami International Airport to collect **\$4.50 per enplaned passenger** on its behalf. Such air carrier is allowed to keep \$0.11 per PFC of the amount remitted to MDAD.

Other Fees

- **Auditorium Use Fee (Miami International Airport)**—the fee shall be \$750.00 per use per day for the whole auditorium. The auditorium can be rented as three separate halls; the fee shall be room #1 \$250.00, room #2 \$250.00 and room #3 \$250.00.
- **Conference Room Use Fee (Miami International Airport – Non Terminal)** – the fee shall be \$150.00 for 4 hours to cover administration, preparation, utility and janitorial costs associated with converting vacant non-leased rooms into usable space for meetings and other specialized functions for airlines and other airport tenants.
- **Consular Lounge Annual Membership Fee** – the fee shall be \$500.00 per entity to cover costs associated with providing needed protocol services to members of the Consular Corps of Miami and other high-level dignitaries.
- **Consular Lounge Rental Fee for Non-Member Organizations** – the fee shall be \$500.00 for 1 – 4 hours of use per day and \$900.00 for 8 consecutive hours (full day) during a 24-hour period for rental of the MDAD Consular Lounge to non-member organizations (those organizations that are not part of the Consular Corps of Miami).
- **Interfaith Chapel Fee** – the fee shall be \$100.00 per scheduled or secular service.
- **Digital Media Sales Fee (Fixed)** – the fee shall be variable between \$50.00 to \$30,000.00 per month depending on advertising type, size and other factors and will apply to all advertisement space, banners, screen pop-ups and the like appearing on MDAD’s Digital Media services.
- **Digital Media Sales Fee (Per 1,000 impressions)** – the fee shall be variable between \$5.00 to \$50.00 per 1,000 impressions depending on advertising type, size, duration and other factors and will apply to all advertisement space, banners, screen pop-ups and the like appearing on MDAD’s Digital Media services.
- **Electric Cart Registration Fee** – the fee shall be \$25.00 per cart, per year.
- **Electric Cart Lost Registration Fee** – the fee shall be \$75.00 per cart.
- **Electric Cart Late Registration Fee** – the fee shall be \$10.00 per cart.
- **Late Revenue Reporting Fee** – the fee shall be \$50.00 per day, up to \$750.00 per violation for all companies doing business with the Miami-Dade Aviation Department that are required to submit revenue reports on a recurring basis (monthly, quarterly, annually, etc.).
- **Wheelchair Lift Fee**—the fee shall be \$15.00 per use and will be assessed to commuter airlines that require wheelchair-lifting equipment.
- **Security Violation Fee** – the fee shall be; first offense \$100.00; second offense \$250.00; third offense \$500.00. In addition, all court costs will also be applicable.
- **Permit Application Fee for providers of goods and services to airlines and airport tenants** -the non-refundable application fee shall be \$1,000.00 per permit application at Miami International Airport. A non-refundable application fee of \$500.00 will be charged to each permit application for providers of goods and services to airlines and airport tenants at the County’s General Aviation Airports. The current fee is \$1,000.00 and \$500.00 may be amended from time to time.
- **Fee for violating terms of Permit or for any other violations not specifically listed herein** – the fee shall be \$50.00 for the first 30-day period and \$100.00 for each subsequent 30-day period per permittee. The Permit Penalty Fee will apply to permittees that do not comply with required submission deadlines.
- **Tenant’s Failure to Disclose its Vendors, Sub-tenants, Assignees, Contractors or Sub-contractors** – The fee shall be \$100.00 per each day the failure occurs and continues (subject to a \$500.00 annual cap at the County’s General Aviation Airports and a \$1,500.00 annual cap at Miami International Airport).
- **Permittee’s Failure to Disclose its Customers** – The fee shall be \$50.00 per each day the failure occurs and continues.

Other Fees (continued)

- **Interest Charged on any Under-reported or Non-reported Revenue** – An annual interest charge of 18% (or 1.5% per month) for each month in which the under-reported or non-reported revenue occurs, regardless of the number of days in the month it occurs.
- **Aircraft Demolition Fee** – the fee shall be \$2,000.00 per month, per aircraft for months 1 through 3; and \$4,000.00 per month, per aircraft beginning at month 4 and each month thereafter.
- **Baggage or Property Impound Fees** – The fee shall be \$5.00 per day, per piece for the first 15 days; \$10.00 per day, per piece for 16 to 30 days; \$20.00 per day, per piece for 31+days. The fee is established to cover retrieval and storage costs of unattended or neglected baggage or property.
- **Background Check Fee** – the fee shall be \$168.00 plus a 15% administrative fee per background check. The background check fee is administered by an outside vendor and will enable the department to pay for background checks for individuals applying for leases, business opportunities and other real property opportunities at the County’s airports.
- **Animal Inspection Facility User Fees** – The following fees will apply for each animal that passes through the USDA Inspection Facility (Bldg. 815):
 - **Small Ruminants** (Sheep, goats, pigs, swine) - **\$25.00 flat fee per air waybill**
 - **Small Animals** (Dogs, cats, & other pet types) - **\$15.00 flat fee per air waybill**
 - **Livestock** (Equine, cattle, calves, ovine, caprine, porcine, Ostrich, etc.) - **\$45.00 per Head**
 - **Alpaca** - **\$25.00 per Head**
 - **Poultry** (Birds, baby chicks, turkey, etc.) - **\$25.00 flat fee per air waybill**
 - **Other** - **\$25.00 flat fee per air waybill**

Remittance Fee 5% - Freight Handler will retain 5% of Inspection Fees for collecting amounts payable to Miami-Dade Aviation Department.
- **Average Electrical Consumption per kilowatt hour (kWh) Charge** – The charge shall be \$0.1065 per kilowatt hour consumed.
- **Airside Enforcement Processing Fee** – the fee shall be \$100.00 per civil violation. This fee covers costs associated with MDAD Airside Enforcement personnel that must testify at court hearings.

Other Fees (continued)

- **Violation Fees for Airport Concessionaires and Tenants** – The following fees may be charged by MDAD for violations of Chapter 25 of the Code of Miami-Dade County or agreements applicable to a Concessionaire or a Tenant:
 - **Violation of permitted use of a location** – The fee shall be \$100.00 per day, per location.
 - **Failure to maintain required hours of operation** – The fee shall be \$50.00 per day, per location.
 - **Failure to submit required documentation and reports** – The fee shall be \$50.00 per day, per report, up to \$750.00 per month. (This fee applies to reports recurring monthly, quarterly, annually, etc. such as monthly revenue reports and related documents.)
 - **Failure to comply with request for mandatory response** – The fee shall be \$100.00 per day until response is received.
 - **Unauthorized advertising** – The fee shall be \$50.00 per day, per location.
 - **Failure to maintain premises in a clean state** – The fee shall be \$50.00 per day, per location.
 - **Failure to maintain pricing at a level required by agreement, or to conduct surveys as required** – The fee shall be \$50.00 per day, per location.
 - **Installation of unapproved items in locations** – The fee shall be \$50.00 per day, per location.
 - **Violation of other terms and conditions** – under a lease, license, permit, or other document: at MDAD’s option, (i) a \$75.00 per day rate, (ii) the penalty, rate, or fee provided in the contractual document for the violation, (iii) recovery of the damages to MDAD resulting from the violation, or (iv) termination of the lease or document. The fee shall be \$75.00 per day, per location.

The foregoing fees are due and payable from a Concessionaire or Tenant determined by MDAD to be in violation of either Chapter 25 or an applicable agreement or both. Imposition of such fees is an additional remedy available to MDAD for such violations and is not intended to waive MDAD’s right to terminate an agreement for such violations, in addition to imposing the foregoing fees.



APPENDIX A TAB



ALLOCATION OF OPERATING AND DEBT SERVICE COSTS BY COST CENTER WORKSHEET
 Terminal Rental Rate Calculation Model
 Miami-Dade County Aviation Department
 Miami International Airport
 FY 2020-21

Division-Description	Budgeted FY 2020-21	Direct Expense	G&A Expense	Transfers	International Facilities Percentage	Domestic Baggage Claim Percentage	Outbound Baggage Makeup Percentage	Screening Percentage	Terminal Rent Percentage	Total Terminal Percentage	Non-Terminal Percentage	Total	International Facilities Expense	Domestic Baggage Claim Expense	Outbound Baggage Makeup Expense	Screening Expense	Terminal Rent Expense	Total Terminal Expenses	Non-Terminal Expenses	Total Expenses
					[A]	[B]	[C]	[D]	[E]	[F=A+B+C+D+E]	[G]	[F*G]								
01-Executive	3,041,890		\$3,041,890		4.8%	0.3%	1.9%	3.0%	46.4%	56.3%	43.7%	100.0%	\$145,402	\$7,605	\$58,404	\$89,736	\$1,412,350	\$1,713,497	\$1,328,393	\$3,041,890
02-Legal	1,963,642		1,963,642		4.8%	0.3%	1.9%	3.0%	46.4%	56.3%	43.7%	100.0%	93,862	4,909	37,702	57,927	911,719	1,106,120	857,522	1,963,642
03-Administration	485,583		485,583		4.8%	0.3%	1.9%	3.0%	46.4%	56.3%	43.7%	100.0%	23,211	1,214	9,323	14,325	225,456	273,529	210,054	485,583
04-Accounting	4,700,701		4,700,701		4.8%	0.3%	1.9%	3.0%	46.4%	56.3%	43.7%	100.0%	224,694	11,752	90,253	138,671	2,182,535	2,647,905	2,052,796	4,700,701
05-Finance & Strategy	1,200,790		1,200,790		4.8%	0.3%	1.9%	3.0%	46.4%	56.3%	43.7%	100.0%	57,398	3,002	23,055	35,423	557,257	676,405	524,385	1,200,790
06-Human Resources	13,216,382		13,216,382		4.8%	0.3%	1.9%	3.0%	46.4%	56.3%	43.7%	100.0%	631,743	33,041	253,755	389,883	6,136,366	7,444,788	5,771,594	13,216,382
07-Real Estate Management & Development	3,675,945		3,675,945		4.8%	0.3%	1.9%	3.0%	46.4%	56.3%	43.7%	100.0%	175,710	9,190	70,578	108,440	1,706,741	2,070,660	1,605,285	3,675,945
08-Capital Finance	3,999,659		3,999,659		4.8%	0.3%	1.9%	3.0%	46.4%	56.3%	43.7%	100.0%	191,184	9,999	76,793	117,990	1,857,042	2,253,008	1,746,651	3,999,659
09-Police	37,232,500	37,232,500			0.0%	0.0%	0.0%	28.2%	40.6%	68.8%	31.2%	100.0%	--	--	--	10,493,275	15,118,491	25,611,767	11,620,733	37,232,500
10-Governmental Affairs	582,140		582,140		4.8%	0.3%	1.9%	3.0%	46.4%	56.3%	43.7%	100.0%	27,826	1,455	11,177	17,173	270,288	327,919	254,221	582,140
11-Fire & Rescue	33,384,306	33,384,306			0.0%	0.0%	0.0%	10.0%	10.0%	10.0%	90.0%	100.0%	--	--	--	3,338,430	3,338,430	30,045,876	33,384,306	
12-Fine Arts & Cultural Affairs	574,074		574,074		4.8%	0.3%	1.9%	3.0%	46.4%	56.3%	43.7%	100.0%	27,441	1,435	11,022	16,935	266,543	323,376	250,698	574,074
13-Contracts Administration	2,860,284		2,860,284		4.8%	0.3%	1.9%	3.0%	46.4%	56.3%	43.7%	100.0%	136,722	7,151	54,917	84,378	1,328,030	1,611,198	1,249,086	2,860,284
14-Maintenance	165,575,621	165,575,621			5.9%	0.4%	4.0%	0.0%	52.3%	62.6%	37.4%	100.0%	9,776,582	735,680	6,654,793	--	86,562,217	103,729,272	61,846,349	165,575,621
15-Facilities	3,110,657		3,110,657		0.0%	0.0%	0.0%	0.0%	0.0%	0.0%	100.0%	100.0%	--	--	--	--	--	--	3,110,657	3,110,657
15-Facilities Design	5,422,276	5,422,276			0.0%	0.0%	0.0%	0.0%	0.0%	0.0%	100.0%	100.0%	--	--	--	--	--	--	5,422,276	5,422,276
16-Public & Customer Relations	1,067,298		1,067,298		4.8%	0.3%	1.9%	3.0%	46.4%	56.3%	43.7%	100.0%	51,017	2,668	20,492	31,485	495,546	601,209	466,089	1,067,298
17-Aviation Planning, Land Use & Grants	4,870,711		4,870,711		4.8%	0.3%	1.9%	3.0%	46.4%	56.3%	43.7%	100.0%	232,820	12,177	93,518	143,686	2,261,471	2,743,672	2,127,039	4,870,711
19-Program Controls	3,125,827		3,125,827		0.0%	0.0%	0.0%	0.0%	70.0%	70.0%	30.0%	100.0%	--	--	--	2,188,079	2,188,079	937,748	3,125,827	
22-Information Systems - Administration	36,536,212		36,536,212		2.5%	0.5%	0.0%	0.0%	49.6%	53.0%	47.0%	100.0%	920,788	169,952	169,952	--	18,114,071	19,374,762	17,161,450	36,536,212
24-Business Retention & Development	642,884		642,884		4.8%	0.3%	1.9%	3.0%	46.4%	56.3%	43.7%	100.0%	30,730	1,607	12,343	18,965	298,491	362,137	280,747	642,884
25-Airside Operations	12,641,632	12,641,632			0.0%	0.0%	0.0%	0.0%	39.7%	39.7%	60.3%	100.0%	--	--	--	5,020,479	5,020,479	7,621,153	12,641,632	
26-Terminal Operations	13,726,923		13,726,923		46.2%	0.0%	0.0%	0.0%	53.8%	100.0%	0.0%	100.0%	6,336,933	--	--	--	7,389,990	13,726,923	--	13,726,923
27-Landside Operations	14,618,603	14,618,603			0.0%	0.0%	0.0%	0.0%	0.0%	0.0%	100.0%	100.0%	--	--	--	--	--	--	14,618,603	14,618,603
28-Cargo Development	--	--	--	--	0.0%	0.0%	0.0%	0.0%	0.0%	0.0%	100.0%	100.0%	--	--	--	--	--	--	--	--
30-Non-Departmental O&M	39,230,000	39,230,000			0.0%	0.0%	0.0%	0.0%	76.4%	76.4%	23.6%	100.0%	--	--	--	--	29,952,401	29,952,401	9,277,599	39,230,000
30-Non-Departmental G&A	25,848,738		25,848,738		4.8%	0.3%	1.9%	3.0%	46.4%	56.3%	43.7%	100.0%	1,235,570	64,622	496,296	762,538	12,001,569	14,560,594	11,288,144	25,848,738
30-Non-Departmental Deposits	162,503,466		162,503,466	162,503,466	0.0%	0.0%	0.0%	0.0%	0.0%	0.0%	100.0%	100.0%	--	--	--	--	--	--	162,503,466	162,503,466
-Subordinate Debt Payment	22,302,789		22,302,789	22,302,789	0.0%	0.0%	0.0%	0.0%	50.0%	50.0%	50.0%	100.0%	--	--	--	--	11,151,395	11,151,395	11,151,395	22,302,789
31-Management Agreements	371,874,590	20,978,498	110,000,000	350,896,092	1.4%	0.5%	4.9%	0.3%	72.3%	79.3%	20.7%	100.0%	2,982,641	964,449	10,347,977	598,940	153,316,018	168,210,025	93,664,565	261,874,590
33-AVIATION DEVELOPMENT FUND	33,976,663	33,976,663			0.0%	0.0%	0.0%	0.0%	0.0%	0.0%	100.0%	100.0%	--	--	--	--	--	--	33,976,663	33,976,663
34-Minority Affairs	198,991		198,991		0.0%	0.0%	0.0%	0.0%	0.0%	0.0%	100.0%	100.0%	--	--	--	--	--	--	198,991	198,991
38-Civil Environmental Engineering	9,385,729		9,385,729		0.0%	0.0%	0.0%	0.0%	0.0%	0.0%	100.0%	100.0%	9,512	497	3,821	5,870	92,392	112,092	86,899	9,385,729
40-Security & Safety	23,041,700		23,041,700		4.8%	0.3%	1.9%	3.0%	46.4%	56.3%	43.7%	100.0%	1,101,393	57,604	442,401	679,730	10,698,261	12,979,390	10,062,310	23,041,700
42-Communications	1,757,552		1,757,552		4.8%	0.3%	1.9%	3.0%	46.4%	56.3%	43.7%	100.0%	84,011	4,394	33,745	51,848	816,031	990,029	767,523	1,757,552
43-Aviation Business Planning	--	--	--	--	4.8%	0.3%	1.9%	3.0%	46.4%	56.3%	43.7%	100.0%	--	--	--	--	--	--	--	--
44-Marketing	2,794,333		2,794,333		4.8%	0.3%	1.9%	3.0%	46.4%	56.3%	43.7%	100.0%	133,569	6,986	53,651	82,433	1,297,409	1,574,048	1,220,285	2,794,333
45-North Terminal Development	--	--	--	--	4.8%	0.3%	1.9%	3.0%	46.4%	56.3%	43.7%	100.0%	--	--	--	--	--	--	--	--
47-Professional Compliance	1,703,255		1,703,255		4.8%	0.3%	1.9%	3.0%	46.4%	56.3%	43.7%	100.0%	81,416	4,258	32,702	50,246	790,821	959,444	743,811	1,703,255
50-Noise Abatement	817,769		817,769		0.0%	0.0%	0.0%	0.0%	0.0%	0.0%	100.0%	100.0%	--	--	--	--	--	--	817,769	817,769
51-Commodities Management	4,387,146		4,387,146		4.8%	0.3%	1.9%	3.0%	46.4%	56.3%	43.7%	100.0%	209,706	10,968	84,233	129,421	2,036,952	2,471,279	1,915,867	4,387,146
52-Protocol & International Affairs	1,215,162		1,215,162		4.8%	0.3%	1.9%	3.0%	46.4%	56.3%	43.7%	100.0%	58,085	3,038	23,331	35,847	564,200	684,501	530,661	1,215,162
55-Financial Planning & Performance Analysis	735,387		735,387		4.8%	0.3%	1.9%	3.0%	46.4%	56.3%	43.7%	100.0%	35,151	1,838	14,119	21,694	341,440	414,243	321,144	735,387
56-Operations	1,144,006		1,144,006		4.8%	0.3%	1.9%	3.0%	46.4%	56.3%	43.7%	100.0%	54,683	2,860	21,965	33,748	531,162	644,419	499,587	1,144,006
57-Facilities Development	489,782		489,782		4.8%	0.3%	1.9%	3.0%	46.4%	56.3%	43.7%	100.0%	23,412	1,224	9,404	14,449	227,406	275,894	213,888	489,782
58-Facilities Management	1,740,827		1,740,827		4.8%	0.3%	1.9%	3.0%	46.4%	56.3%	43.7%	100.0%	83,212	4,352	33,424	51,354	808,266	980,608	760,219	1,740,827
59-Security	--	--	--	--	4.8%	0.3%	1.9%	3.0%	46.4%	56.3%	43.7%	100.0%	--	--	--	--	--	--	--	--
60-Grants Management	--	--	--	--	4.8%	0.3%	1.9%	3.0%	46.4%	56.3%	43.7%	100.0%	--	--	--	--	--	--	--	--
61-Strategic Planning	--	--	--	--	4.8%	0.3%	1.9%	3.0%	46.4%	56.3%	43.7%	100.0%	--	--	--	--	--	--	--	--
62-Security Operations Command Center	--	--	--	--	4.8%	0.3%	1.9%	3.0%	46.4%	56.3%	43.7%	100.0%	--	--	--	--	--	--	--	--
63-Cash Management	--	--	--	--	4.8%	0.3%	1.9%	3.0%	46.4%	56.3%	43.7%	100.0%	--	--	--	--	--	--	--	--
64-Airport Concession & Business Development	3,057,707		3,057,707		4.8%	0.3%	1.9%	3.0%	46.4%	56.3%	43.7%	100.0%	146,158	7,644	58,708	90,202	1,419,693	1,722,406	1,335,301	3,057,707
65-Communications, Hospitality & Transportation	957,865		957,865		4.8%	0.3%	1.9%	3.0%	46.4%	56.3%	43.7%	100.0%	45,786	2,395	18,391	28,257	444,737	539,565	41	

ALLOCATION OF OPERATING AND DEBT SERVICE COSTS BY COST CENTER WORKSHEET
 Terminal Rental Rate Calculation Model
 Miami-Dade County Aviation Department
 Miami International Airport
 FY 2020-21

Division-Description	Budgeted FY 2020-21	Direct Expense	G&A Expense	Transfers	International Facilities Percentage	Domestic Baggage Claim Percentage	Outbound Baggage Makeup Percentage	Screening Percentage	Terminal Rent Percentage	Total Terminal Percentage	Non-Terminal Percentage	Total	International Facilities Expense	Domestic Baggage Claim Expense	Outbound Baggage Makeup Expense	Screening Expense	Terminal Rent Expense	Total Terminal Expenses	Non-Terminal Expenses	Total Expenses
ALLOCATION OF O&M BY DIVISIONS																				
ALLOCATION OF POLICE O&M																				
Administration	\$0				0.0%	0.0%	0.0%	0.0%	68.8%	68.8%	31.2%	100.0%	--	--	--	--	--	--	--	--
Uniform Patrol	34,977,585				0.0%	0.0%	0.0%	30.0%	40.0%	70.0%	30.0%	100.0%	--	--	--	10,493,276	13,991,034	24,484,310	10,493,276	34,977,586
General Investigation Unit	2,254,915				0.0%	0.0%	0.0%	0.0%	50.0%	50.0%	50.0%	100.0%	--	--	--	--	1,127,458	1,127,458	1,127,458	2,254,916
09-TOTAL POLICE O&M	\$37,232,500	\$37,232,500			0.0%	0.0%	0.0%	28.2%	40.6%	68.8%	31.2%	100.0%	0	0	0	\$10,493,276	\$15,118,492	\$25,611,768	\$11,620,734	\$37,232,502
ALLOCATION OF FIRE-RESCUE O&M																				
Administration	\$903,550				0.0%	0.0%	0.0%	0.0%	10.0%	10.0%	90.0%	100.0%	--	--	--	--	90,355	90,355	813,195	903,550
Rescue	30,615,863				0.0%	0.0%	0.0%	0.0%	10.0%	10.0%	90.0%	100.0%	--	--	--	--	3,061,586	3,061,586	27,554,277	30,615,863
Inspection	--				0.0%	0.0%	0.0%	0.0%	20.0%	20.0%	80.0%	100.0%	--	--	--	--	--	--	--	--
Fire-fighters	--				0.0%	0.0%	0.0%	0.0%	10.0%	10.0%	90.0%	100.0%	--	--	--	--	--	--	--	--
Fire Technician	1,864,893				0.0%	0.0%	0.0%	0.0%	10.0%	10.0%	90.0%	100.0%	--	--	--	--	186,489	186,489	1,678,404	1,864,893
11-TOTAL FIRE-RESCUE O&M	\$33,384,306	\$33,384,306			0.0%	0.0%	0.0%	0.0%	10.0%	10.0%	90.0%	100.0%	0	0	0	0	\$3,338,430	\$3,338,430	\$30,045,876	\$33,384,306
ALLOCATION OF MAINTENANCE O&M																				
Administration	--				0.0%	0.0%	0.0%	0.0%	62.6%	37.4%	100.0%	100.0%	--	--	--	--	--	--	--	--
Service Station	720,000				0.0%	0.0%	0.0%	0.0%	0.0%	0.0%	100.0%	100.0%	--	--	--	--	--	--	720,000	720,000
Fleet Management	2,468,259				0.0%	0.0%	0.0%	0.0%	0.0%	0.0%	100.0%	100.0%	--	--	--	--	--	--	2,468,259	2,468,259
Warehouse	--				0.0%	0.0%	0.0%	0.0%	60.0%	60.0%	40.0%	100.0%	--	--	--	--	--	--	--	--
General Building Repair & O&I Projects	3,022,196				0.0%	0.0%	0.0%	0.0%	0.0%	0.0%	100.0%	100.0%	--	--	--	--	--	--	3,022,196	3,022,196
Manager - Facilities Maintenance	--				0.0%	0.0%	0.0%	0.0%	100.0%	100.0%	0.0%	100.0%	--	--	--	--	--	--	--	--
Airport Fire Suppression Technicians	5,468,192				0.0%	0.0%	0.0%	0.0%	60.0%	60.0%	40.0%	100.0%	--	--	--	--	3,280,915	3,280,915	2,187,277	5,468,192
A/C Control	--				0.0%	0.0%	0.0%	0.0%	100.0%	100.0%	0.0%	100.0%	--	--	--	--	--	--	--	--
Generators	1,337,910				0.0%	0.0%	0.0%	0.0%	30.0%	30.0%	70.0%	100.0%	--	--	--	--	401,373	401,373	936,537	1,337,910
Tamiami Airport Maintenance	929,973				0.0%	0.0%	0.0%	0.0%	0.0%	0.0%	100.0%	100.0%	--	--	--	--	--	--	929,973	929,973
Opa-Locka Airport Maintenance	621,714				0.0%	0.0%	0.0%	0.0%	0.0%	0.0%	100.0%	100.0%	--	--	--	--	--	--	621,714	621,714
Security Infrastructure	--				0.0%	0.0%	0.0%	0.0%	0.0%	0.0%	100.0%	100.0%	--	--	--	--	--	--	--	--
Planning & Programming	--				0.0%	0.0%	0.0%	0.0%	100.0%	100.0%	0.0%	100.0%	--	--	--	--	--	--	--	--
Facilities Initiation	--				0.0%	0.0%	0.0%	0.0%	100.0%	100.0%	0.0%	100.0%	--	--	--	--	--	--	--	--
Plumbing Shop	2,596,184				0.0%	0.0%	0.0%	0.0%	68.0%	68.0%	32.0%	100.0%	--	--	--	--	1,765,405	1,765,405	830,779	2,596,184
Electrical Shop - Facilities Maintenance	4,568,601				0.0%	0.0%	0.0%	0.0%	90.0%	90.0%	10.0%	100.0%	--	--	--	--	4,111,741	4,111,741	456,860	4,568,601
Air Conditioning - Facilities Maintenance	5,062,471				0.0%	0.0%	0.0%	0.0%	90.0%	90.0%	10.0%	100.0%	--	--	--	--	4,556,224	4,556,224	506,247	5,062,471
Mechanical Conveyors	(3,898,500)				20.0%	40.0%	20.0%	0.0%	20.0%	100.0%	0.0%	100.0%	(779,700)	(1,559,400)	(779,700)	--	(779,700)	(3,898,500)	--	(3,898,500)
Loading Bridges	4,545,418				0.0%	0.0%	0.0%	0.0%	0.0%	0.0%	100.0%	100.0%	--	--	--	--	--	--	4,545,418	4,545,418
Mechanical Maintenance	850,809				0.0%	0.0%	0.0%	0.0%	50.0%	50.0%	50.0%	100.0%	--	--	--	--	425,405	425,405	425,405	850,810
Terminal A/C Shop	1,812,753				0.0%	0.0%	0.0%	0.0%	100.0%	100.0%	0.0%	100.0%	--	--	--	--	1,812,753	1,812,753	--	1,812,753
Painting	--				0.0%	0.0%	0.0%	0.0%	50.0%	50.0%	50.0%	100.0%	--	--	--	--	--	--	--	--
Term. Maint. & Term. Gen. Bldg. Repair	3,551,907				0.0%	0.0%	0.0%	0.0%	100.0%	100.0%	0.0%	100.0%	--	--	--	--	3,551,907	3,551,907	--	3,551,907
Carpenter Shop	1,021,036				0.0%	0.0%	0.0%	0.0%	90.0%	90.0%	10.0%	100.0%	--	--	--	--	918,932	918,932	102,104	1,021,036
Stripping	1,738,434				0.0%	0.0%	0.0%	0.0%	0.0%	0.0%	100.0%	100.0%	--	--	--	--	--	--	1,738,434	1,738,434

ALLOCATION OF OPERATING AND DEBT SERVICE COSTS BY COST CENTER WORKSHEET
 Terminal Rental Rate Calculation Model
 Miami-Dade County Aviation Department
 Miami International Airport
 FY 2020-21

Division-Description	Budgeted FY 2020-21	Direct Expense	G&A Expense	Transfers	International Facilities Percentage	Domestic Baggage Claim Percentage	Outbound Baggage Makeup Percentage	Screening Percentage	Terminal Rent Percentage	Total Terminal Percentage	Non-Terminal Percentage	Total	International Facilities Expense	Domestic Baggage Claim Expense	Outbound Baggage Makeup Expense	Screening Expense	Terminal Rent Expense	Total Terminal Expenses	Non-Terminal Expenses	Total Expenses	
Terminal Plumbing	1,133,616				0.0%	0.0%	0.0%	0.0%	80.0%	80.0%	20.0%	100.0%	--	--	--	--	906,893	906,893	226,723	1,133,616	
Security - Bldg. Mgmt. & Controls	--				0.0%	0.0%	0.0%	0.0%	95.0%	95.0%	5.0%	100.0%	--	--	--	--	--	--	--	--	
Video Services	--				0.0%	0.0%	0.0%	0.0%	95.0%	95.0%	5.0%	100.0%	--	--	--	--	--	--	--	--	
Locksmith Shop	533,631				0.0%	0.0%	0.0%	0.0%	55.0%	55.0%	45.0%	100.0%	--	--	--	293,497	293,497	240,134	533,631		
Roofing	--				0.0%	0.0%	0.0%	0.0%	50.0%	50.0%	50.0%	100.0%	--	--	--	--	--	--	--	--	
Landscape - General	4,166,585				0.0%	0.0%	0.0%	0.0%	0.0%	0.0%	100.0%	100.0%	--	--	--	--	--	--	4,166,585	4,166,585	
Airfield Lighting	999,925				0.0%	0.0%	0.0%	0.0%	0.0%	0.0%	100.0%	100.0%	--	--	--	--	--	--	999,925	999,925	
Public Works	1,936,429				0.0%	0.0%	0.0%	0.0%	2.0%	2.0%	98.0%	100.0%	--	--	--	38,729	38,729	1,897,700	1,936,429		
Waste Transfer Facility	3,906,030				0.0%	0.0%	0.0%	0.0%	100.0%	100.0%	0.0%	100.0%	--	--	--	3,906,030	3,906,030	--	3,906,030		
Canal Maintenance	668,893				0.0%	0.0%	0.0%	0.0%	0.0%	0.0%	100.0%	100.0%	--	--	--	--	--	--	668,893	668,893	
Quality Assurance	863,533				0.0%	0.0%	0.0%	0.0%	100.0%	100.0%	0.0%	100.0%	--	--	--	863,533	863,533	--	863,533		
Safety & Customer Serv.	--				0.0%	0.0%	0.0%	0.0%	100.0%	100.0%	0.0%	100.0%	--	--	--	--	--	--	--	--	
Terminal-Wide Security (CCTV F034F)	--				0.0%	0.0%	0.0%	0.0%	100.0%	100.0%	0.0%	100.0%	--	--	--	--	--	--	--	--	
Cargo Area (West Cargo)	1,857,949				0.0%	0.0%	0.0%	0.0%	0.0%	0.0%	100.0%	100.0%	--	--	--	--	--	--	1,857,949	1,857,949	
Lift Stations & FM Plumbing	1,775,992				0.0%	0.0%	0.0%	0.0%	0.0%	0.0%	100.0%	100.0%	--	--	--	--	--	--	1,775,992	1,775,992	
Maintenance Construction Team	1,680,161				0.0%	0.0%	0.0%	0.0%	0.0%	0.0%	100.0%	100.0%	--	--	--	--	--	--	1,680,161	1,680,161	
Engineering Design & Commissioning	5,678,720				0.0%	0.0%	0.0%	0.0%	0.0%	0.0%	100.0%	100.0%	--	--	--	--	--	--	5,678,720	5,678,720	
Systems Contract Management	6,183,016				0.0%	0.0%	0.0%	0.0%	50.0%	50.0%	50.0%	100.0%	--	--	--	3,091,508	3,091,508	3,091,508	6,183,016		
Special Projects	--				0.0%	0.0%	0.0%	0.0%	90.0%	90.0%	10.0%	100.0%	--	--	--	--	--	--	--	--	
Interiors	5,286,051				0.0%	0.0%	0.0%	0.0%	74.0%	74.0%	26.0%	100.0%	--	--	--	3,911,678	3,911,678	1,374,373	5,286,051		
Signage Design	3,187,497				0.0%	0.0%	0.0%	0.0%	55.0%	55.0%	45.0%	100.0%	--	--	--	1,753,123	1,753,123	1,434,374	3,187,497		
Technical Support	2,448,756				0.0%	0.0%	0.0%	0.0%	85.0%	85.0%	15.0%	100.0%	--	--	--	2,081,443	2,081,443	367,313	2,448,756		
Contracts - Terminal Maintenance	865,843				0.0%	0.0%	0.0%	0.0%	0.0%	0.0%	100.0%	100.0%	--	--	--	--	--	--	865,843	865,843	
APM - Airport People Mover (E-Satellite TRAIN-MOU)	1,718,257				50.0%	0.0%	0.0%	0.0%	50.0%	100.0%	0.0%	100.0%	859,129	--	--	859,129	1,718,258	--	1,718,258		
Relamping	767,858				0.0%	0.0%	0.0%	0.0%	0.0%	0.0%	100.0%	100.0%	--	--	--	--	--	--	767,858	767,858	
Janitorial Contract - Zone 1 (Uniceo)	30,302,561				0.0%	0.0%	0.0%	0.0%	95.0%	95.0%	5.0%	100.0%	--	--	--	28,787,433	28,787,433	1,515,128	30,302,561		
Janitorial Contract - Zone 2	--				0.0%	0.0%	0.0%	0.0%	95.0%	95.0%	5.0%	100.0%	--	--	--	--	--	--	--	--	
Janitorial Contract - Zone 3 (N&K)	3,021,420				0.0%	0.0%	0.0%	0.0%	0.0%	0.0%	100.0%	100.0%	--	--	--	--	--	--	3,021,420	3,021,420	
Janitorial Contract - Zone 4 (Vista)	3,148,992				0.0%	0.0%	0.0%	0.0%	0.0%	0.0%	100.0%	100.0%	--	--	--	--	--	--	3,148,992	3,148,992	
OUTSIDE CONTRACTS	47,026,549				20.6%	4.9%	15.8%	0.0%	42.6%	83.9%	16.1%	100.0%	9,697,153	2,295,080	7,434,493	20,024,268	39,450,994	7,575,556	47,026,550		
14-TOTAL MAINTENANCE O&M	\$82,076,099	\$82,076,099			5.9%	0.4%	4.0%	0.0%	52.3%	62.6%	37.4%	100.0%	\$9,776,582	\$735,680	\$6,654,793	\$0	\$86,562,219	\$103,729,274	\$61,846,350	\$165,575,624	
ALLOCATION OF INFORMATION SYSTEMS																					
Administration	\$17,908,200				0.0%	0.0%	0.0%	0.0%	53.0%	53.0%	47.0%	100.0%	--	--	--	--	9,496,527	9,496,527	8,411,673	17,908,200	
Telephone	9,057,114				0.0%	0.0%	0.0%	0.0%	67.0%	67.0%	33.0%	100.0%	--	--	--	--	6,068,266	6,068,266	2,988,848	9,057,114	
CUTE, CUSS SITA Contract	5,421,025				0.0%	0.0%	0.0%	0.0%	0.0%	0.0%	100.0%	100.0%	--	--	--	--	--	--	5,421,025	5,421,025	
CBP Kiosks	750,836				100.0%	0.0%	0.0%	0.0%	0.0%	0.0%	0.0%	100.0%	750,836	--	--	--	--	750,836	--	750,836	
AQIS, NSS and Other O/S Contracts	3,399,037				5.0%	5.0%	5.0%	0.0%	75.0%	90.0%	10.0%	100.0%	169,952	169,952	169,952	2,549,278	3,059,134	339,904	3,399,038		
Security Infrastructure	0				0.0%	0.0%	0.0%	0.0%	90.0%	90.0%	10.0%	100.0%	--	--	--	--	--	--	--	--	
22-TOTAL INFORMATION SYSTEMS O&M	\$36,536,212	\$36,536,212			2.5%	0.5%	0.5%	0.0%	49.6%	53.0%	47.0%	100.0%	\$920,788	\$169,952	\$169,952	\$0	\$18,114,071	\$19,374,763	\$17,161,450	\$36,536,213	
ALLOCATION OF AIRSIDE OPS O&M																					
Administration	\$972,120				0.0%	0.0%	0.0%	0.0%	39.7%	39.7%	60.3%	100.0%	--	--	--	--	386,066	386,066	586,054	972,120	
Ramp Control	4,000,272				0.0%	0.0%	0.0%	0.0%	0.0%	0.0%	100.0%	100.0%	--	--	--	--	--	--	4,000,272	4,000,272	
Access Control	2,813,268				0.0%	0.0%	0.0%	0.0%	0.0%	0.0%	100.0%	100.0%	--	--	--	--	--	--	2,813,268	2,813,268	
Gate Assignment	4,488,460				0.0%	0.0%	0.0%	0.0%	100.0%	100.0%	0.0%	100.0%	--	--	--	4,488,460	4,488,460	--	4,488,460		
Noise Control	--				0.0%	0.0%	0.0%	0.0%	0.0%	0.0%	100.0%	100.0%	--	--	--	--	--	--	--	--	
25-TOTAL AIRSIDE OPS O&M	\$12,274,120	\$12,274,120			0.0%	0.0%	0.0%	0.0%	39.7%	39.7%	60.3%	100.0%	\$0	\$0	\$0	\$0	\$4,874,526	\$4,874,526	\$7,399,594	\$12,274,120	

ALLOCATION OF OPERATING AND DEBT SERVICE COSTS BY COST CENTER WORKSHEET
 Terminal Rental Rate Calculation Model
 Miami-Dade County Aviation Department
 Miami International Airport
 FY 2020-21

Division-Description	Budgeted FY 2020-21	Direct Expense	G&A Expense	Transfers	International Facilities Percentage	Domestic Baggage Claim Percentage	Outbound Baggage Makeup Percentage	Screening Percentage	Terminal Rent Percentage	Total Terminal Percentage	Non-Terminal Percentage	Total	International Facilities Expense	Domestic Baggage Claim Expense	Outbound Baggage Makeup Expense	Screening Expense	Terminal Rent Expense	Total Terminal Expenses	Non-Terminal Expenses	Total Expenses
ALLOCATION OF TERMINAL OPS O&M																				
Administration	\$576,808				0.0%	0.0%	0.0%	0.0%	100.0%	100.0%	0.0%	100.0%	--	--	--	--	576,808	576,808	--	576,808
Domestic Operations	4,407,432				0.0%	0.0%	0.0%	0.0%	100.0%	100.0%	0.0%	100.0%	--	--	--	--	4,407,432	4,407,432	--	4,407,432
International Operations	6,336,933				100.0%	0.0%	0.0%	0.0%	0.0%	100.0%	0.0%	100.0%	6,336,933	--	--	--	--	6,336,933	--	6,336,933
Tour & Charter Operations	--				0.0%	0.0%	0.0%	0.0%	100.0%	100.0%	0.0%	100.0%	--	--	--	--	--	--	--	--
Contract Services	854,949				0.0%	0.0%	0.0%	0.0%	100.0%	100.0%	0.0%	100.0%	--	--	--	--	854,949	854,949	--	854,949
Passenger & Visitor services	1,550,801				0.0%	0.0%	0.0%	0.0%	100.0%	100.0%	0.0%	100.0%	--	--	--	--	1,550,801	1,550,801	--	1,550,801
26-TOTAL TERMINAL OPS O&M	\$13,726,923	\$13,726,923			46.2%	0.0%	0.0%	0.0%	53.8%	100.0%	0.0%	100.0%	\$6,336,933	\$0	\$0	\$0	\$7,389,990	\$13,726,923	\$0	\$13,726,923
ALLOCATION OF LANDSIDE OPS O&M																				
Administration	\$1,056,177				0.0%	0.0%	0.0%	0.0%	0.0%	0.0%	100.0%	100.0%	--	--	--	--	--	--	1,056,177	1,056,177
Ramp & Garage Control	12,217,999				0.0%	0.0%	0.0%	0.0%	0.0%	0.0%	100.0%	100.0%	--	--	--	--	--	--	12,217,999	12,217,999
Towing	--				0.0%	0.0%	0.0%	0.0%	0.0%	0.0%	100.0%	100.0%	--	--	--	--	--	--	--	--
Taxi	--				0.0%	0.0%	0.0%	0.0%	0.0%	0.0%	100.0%	100.0%	--	--	--	--	--	--	--	--
Identification	--				0.0%	0.0%	0.0%	0.0%	0.0%	0.0%	100.0%	100.0%	--	--	--	--	--	--	--	--
Contract Services	--				0.0%	0.0%	0.0%	0.0%	0.0%	0.0%	100.0%	100.0%	--	--	--	--	--	--	--	--
Control Function	786,714				0.0%	0.0%	0.0%	0.0%	0.0%	0.0%	100.0%	100.0%	--	--	--	--	--	--	786,714	786,714
Employee Parking Operations	557,713				0.0%	0.0%	0.0%	0.0%	0.0%	0.0%	100.0%	100.0%	--	--	--	--	--	--	557,713	557,713
27-TOTAL LANDSIDE OPS O&M	\$14,618,603	\$14,618,603			0.0%	0.0%	0.0%	0.0%	0.0%	0.0%	100.0%	100.0%	\$0	\$0	\$0	\$0	\$0	\$0	\$14,618,603	\$14,618,603
ALLOCATION OF NON-DEPT O&M																				
Telephone	\$700,000				0.0%	0.0%	0.0%	0.0%	67.0%	67.0%	33.0%	100.0%	--	--	--	--	469,000	469,000	231,000	700,000
Electrical Service	26,500,000				0.0%	0.0%	0.0%	0.0%	75.0%	75.0%	25.0%	100.0%	--	--	--	--	19,875,000	19,875,000	6,624,999	26,499,999
Natural Gas Service	30,000				0.0%	0.0%	0.0%	0.0%	28.0%	28.0%	72.0%	100.0%	--	--	--	--	8,400	8,400	21,600	30,000
Water & Sewer Service	12,000,000				0.0%	0.0%	0.0%	0.0%	80.0%	80.0%	20.0%	100.0%	--	--	--	--	9,600,000	9,600,000	2,400,000	12,000,000
MDAD Lease Payments	0				0.0%	0.0%	0.0%	0.0%	0.0%	0.0%	100.0%	100.0%	--	--	--	--	--	--	--	--
30-TOTAL NON-DEPARTMENTAL O&M	\$39,230,000				0.0%	0.0%	0.0%	0.0%	76.4%	76.4%	23.6%	100.0%	\$0	\$0	\$0	\$0	\$29,952,400	\$29,952,400	\$9,277,599	\$39,229,999



ALLOCATION OF OPERATING AND DEBT SERVICE COSTS BY COST CENTER WORKSHEET
 Terminal Rental Rate Calculation Model
 Miami-Dade County Aviation Department
 Miami International Airport
 FY 2020-21

Division-Description	Budgeted FY 2020-21	Direct Expense	G&A Expense	Transfers	International Facilities Percentage	Domestic Baggage Claim Percentage	Outbound Baggage Makeup Percentage	Screening Percentage	Terminal Rent Percentage	Total Terminal Percentage	Non-Terminal Percentage	Total	International Facilities Expense	Domestic Baggage Claim Expense	Outbound Baggage Makeup Expense	Screening Expense	Terminal Rent Expense	Total Terminal Expenses	Non-Terminal Expenses	Total Expenses
ALLOCATION OF MGMT AGREEMENTS																				
Sky Caps / Porter	--	--	--	--	100.0%	0.0%	0.0%	0.0%	0.0%	100.0%	0.0%	100.0%	--	--	--	--	--	--	--	--
Smarte Carte FIS	--	--	--	--	100.0%	0.0%	0.0%	0.0%	0.0%	100.0%	0.0%	100.0%	--	--	--	--	--	--	--	--
Uniceo/Vista/N&K Janitorial	--	--	--	--	0.0%	0.0%	0.0%	0.0%	92.1%	92.1%	7.9%	100.0%	--	--	--	--	--	--	--	--
Other Management Contracts	33,976,663	--	--	--	0.0%	0.0%	0.0%	0.0%	0.0%	0.0%	100.0%	100.0%	--	--	--	--	--	--	33,976,663	33,976,663
31-TOTAL MGMT AGREEMENTS	33,976,663	33,976,663			0.0%	0.0%	0.0%	0.0%	0.0%	0.0%	100.0%	100.0%	\$0	\$0	\$0	\$0	\$0	\$0	\$33,976,663	\$33,976,663
ALLOCATION OF G/A AIRPORT O&M																				
	\$3,546,432	\$3,546,432											\$0	\$0	\$0	\$0	\$0	\$0	\$3,546,432	\$3,546,432
TOTAL DIRECT O&M	\$306,601,858												\$17,034,303	\$905,632	\$6,824,745	\$10,493,276	\$165,350,128	\$200,608,084	\$189,493,301	\$390,101,385
ALLOCATION OF MAINT. O&M BY SUBDIVISIONS																				
ALLOCATION OF CONTRACT SERVICES																				
Outside Maintenance-Motor Vehicles	--	--	--	--	0.0%	0.0%	0.0%	0.0%	0.0%	0.0%	100.0%	100.0%	--	--	--	--	--	--	--	--
Pest Control	--	--	--	--	0.0%	0.0%	0.0%	0.0%	80.0%	80.0%	20.0%	100.0%	--	--	--	--	--	--	--	--
Other Outside Maintenance	--	--	--	--	0.0%	0.0%	0.0%	0.0%	0.0%	0.0%	100.0%	100.0%	--	--	--	--	--	--	--	--
Consulting Engineering and A&E Services	--	--	--	--	0.0%	0.0%	0.0%	0.0%	0.0%	0.0%	100.0%	100.0%	--	--	--	--	--	--	--	--
Laboratory Services	--	--	--	--	0.0%	0.0%	0.0%	0.0%	100.0%	100.0%	0.0%	100.0%	--	--	--	--	--	--	--	--
Water Treatment Service	--	--	--	--	0.0%	0.0%	0.0%	0.0%	100.0%	100.0%	0.0%	100.0%	--	--	--	--	--	--	--	--
Train - CC E Satellite - Other Outside Maintenance	1,822,035	--	--	--	50.0%	0.0%	0.0%	0.0%	50.0%	100.0%	0.0%	100.0%	911,018	--	--	--	911,018	1,822,036	--	1,822,036
Train - Concourse D	8,916,418	--	--	--	50.0%	0.0%	0.0%	0.0%	50.0%	100.0%	0.0%	100.0%	4,458,209	--	--	--	4,458,209	8,916,418	--	8,916,418
Train - Rental Car Facility	4,728,072	--	--	--	0.0%	0.0%	0.0%	0.0%	0.0%	0.0%	100.0%	100.0%	--	--	--	--	--	--	4,728,072	4,728,072
JBT BHS Contract S&C Terminal	13,524,769	--	--	--	32.0%	15.0%	53.0%	0.0%	0.0%	100.0%	0.0%	100.0%	4,327,926	2,028,715	7,168,128	--	--	13,524,769	--	13,524,769
Reimbursements for Outside Contract - L Services	--	--	--	--	0.0%	0.0%	0.0%	0.0%	100.0%	100.0%	0.0%	100.0%	--	--	--	--	--	--	--	--
Other Outside Contractual Services - Terminal Maintenance	532,730	--	--	--	0.0%	50.0%	50.0%	0.0%	0.0%	100.0%	0.0%	100.0%	--	266,365	266,365	--	--	532,730	--	532,730
Outside Maintenance-Terminal Elevator (Schindler)	1,940,971	--	--	--	0.0%	0.0%	0.0%	0.0%	90.0%	90.0%	10.0%	100.0%	--	--	--	--	1,746,874	1,746,874	194,097	1,940,971
Outside Maintenance-Terminal Elevator (Otis)	521,086	--	--	--	0.0%	0.0%	0.0%	0.0%	3.0%	3.0%	97.0%	100.0%	--	--	--	--	15,633	15,633	505,453	521,086
Outside Maintenance-Terminal Elevator (Thyssen)	564,759	--	--	--	0.0%	0.0%	0.0%	0.0%	30.0%	30.0%	70.0%	100.0%	--	--	--	--	169,428	169,428	395,331	564,759
Outside Maintenance-Terminal Elevator (Oracle)	11,681,212	--	--	--	0.0%	0.0%	0.0%	0.0%	87.0%	87.0%	13.0%	100.0%	--	--	--	--	10,162,654	10,162,654	1,518,558	11,681,212
Outside Maintenance-Building 100 Elevator (Mowrey)	--	--	--	--	0.0%	0.0%	0.0%	0.0%	0.0%	0.0%	100.0%	100.0%	--	--	--	--	--	--	--	--
Building Maintenance	--	--	--	--	0.0%	0.0%	0.0%	0.0%	50.0%	50.0%	50.0%	100.0%	--	--	--	--	--	--	--	--
Painting	--	--	--	--	0.0%	0.0%	0.0%	0.0%	50.0%	50.0%	50.0%	100.0%	--	--	--	--	--	--	--	--
Baggage (other outside contractual)	--	--	--	--	0.0%	100.0%	0.0%	0.0%	0.0%	100.0%	0.0%	100.0%	--	--	--	--	--	--	--	--
Plumbing	--	--	--	--	0.0%	0.0%	0.0%	0.0%	50.0%	50.0%	50.0%	100.0%	--	--	--	--	--	--	--	--
Electrical	--	--	--	--	0.0%	0.0%	0.0%	0.0%	50.0%	50.0%	50.0%	100.0%	--	--	--	--	--	--	--	--
Air Conditioning	--	--	--	--	0.0%	0.0%	0.0%	0.0%	45.0%	45.0%	55.0%	100.0%	--	--	--	--	--	--	--	--
Contract Asst-Canal MA	--	--	--	--	0.0%	0.0%	0.0%	0.0%	0.0%	0.0%	100.0%	100.0%	--	--	--	--	--	--	--	--
Building Exterior	--	--	--	--	0.0%	0.0%	0.0%	0.0%	60.0%	60.0%	40.0%	100.0%	--	--	--	--	--	--	--	--
Doors--Automatic	2,270,497	--	--	--	0.0%	0.0%	0.0%	0.0%	95.0%	95.0%	5.0%	100.0%	--	--	--	--	2,156,972	2,156,972	113,525	2,270,497
Electrical	--	--	--	--	0.0%	0.0%	0.0%	0.0%	0.0%	0.0%	100.0%	100.0%	--	--	--	--	--	--	--	--
Cont Asst Non-Assum - Landscaping	--	--	--	--	0.0%	0.0%	0.0%	0.0%	0.0%	0.0%	100.0%	100.0%	--	--	--	--	--	--	--	--
Gen Bldg Repr & Renov	--	--	--	--	0.0%	0.0%	0.0%	0.0%	50.0%	50.0%	50.0%	100.0%	--	--	--	--	--	--	--	--
DBED Compliance Fee (GSA-MOU Elev Svc)	524,000	--	--	--	0.0%	0.0%	0.0%	0.0%	77.0%	77.0%	23.0%	100.0%	--	--	--	--	403,480	403,480	120,520	524,000
TOTAL CONTRACT SERVICES	\$47,026,549				20.6%	4.9%	15.8%	0.0%	42.6%	83.9%	16.1%	100.0%	\$9,697,153	\$2,295,080	\$7,434,493	\$0	\$20,024,268	\$39,450,994	\$7,575,556	\$47,026,550

ALLOCATION OF OPERATING AND DEBT SERVICE COSTS BY COST CENTER WORKSHEET
Terminal Rental Rate Calculation Model
Miami-Dade County Aviation Department
Miami International Airport
FY 2020-21

	Direct Current Expenses	Direct Current Expense Allocation %
G&A ALLOCATION BASIS		
International Concourse	\$17,034,303	4.8%
Domestic Baggage Claim	905,632	0.3%
Outbound Baggage Makeup	6,824,745	1.9%
Screening	10,493,276	3.0%
Terminal Rent	165,350,128	46.4%
Total Terminal	\$200,608,084	56.3%
Non-Terminal	189,493,301	
Less Other Management Contracts	(33,976,663)	
Net Non-Terminal	\$155,516,638	43.7%
G&A Allocation Basis	\$356,124,722	100.0%

MANAGEMENT AGREEMENTS DETAIL	
HOTEL	\$9,456,838
AIRPORT PARKING	7,743,476
BAGGAGE STORAGE	--
AIRPORT CLUBS	883,937
TOP OF THE PORT	0
ALLIED AVIATION FUELING	6,378,257
MIDFIELD FUELING	2,547,306
SHUTTLE	6,966,849
SUBTOTAL	\$33,976,663
JANITORIAL N&K, UNICCO, VISTA	--
SMARTE CARTE FIS	0
QASI-BAGGAGE STORAGE	0
TOTAL	\$33,976,663

APPENDIX B TAB

**CUTE / CUSS
Exhibit Reference
FY 2020-21**

Appendix B

<u><i>Exhibit Name</i></u>	<u><i>Exhibit #</i></u>
<p>Maintenance Costs</p> <ul style="list-style-type: none"> • Maintenance Cost Allocation • Training Cost Allocation • Telecom Charges 	1
<p>General Statistics</p> <ul style="list-style-type: none"> • Ticket Counter Hours • Terminal Costs per Sq. Ft. (Class I, III & IV) • Terminal Sq. Ft. (Class I, III & IV) 	2
Equipment Inventory by Location	3
CUSS (Common Use Self Service) Rates	4
CUTE Back-wall Display Rates	5

**Exhibit 1
FY 2021 CUTE Maintenance Expense Allocation**

	FY 2021 Budget
Equipment Costs	
Core Room Hardware/Servers	\$0

Maintenance costs		
<i>Contractors Expense</i>		
	FY 2021 Budget	Monthly Expense
SITA Contract	\$4,429,385	\$369,115
AirIT (Displays Only)--2 components		
Warranty/Replacement	\$100,000	\$8,333
O & M	175,000	14,583
Total	\$275,000	\$22,917
Telecom Charges per port	\$144	

Allocation of Maintenance Expenses			
SITA Contract			
	%	O&M Units	O&M Expense
Infrastructure	0.0%		\$0
Other	100.0%		
Gates	27.8%	584	1,229,449
Ticket Counters (includes BMU & rechk units)	69.5%	1,463	3,079,938
VIP lounges (including Club America)	0.4%	8	16,842
Training	1.4%	29	132,051
Back Office (includes Operations)	0.3%	7	14,737
CUSS	0.6%	13	27,368
Total	100.0%	2,104	\$4,500,385

Training Cost Allocation			
	O&M Units	% Alloc.	Cost Alloc.
Gates	584	28.4%	\$37,527
Tkt. Ctrs.	1,463	71.2%	94,010
VIP lounges	8	0.4%	514
	2,055	100.0%	\$132,051

Amadeus Inc. Contract	Unit Value	%	O&M Units	O&M Expense
<i>(Allocated to Common Use Displays only)</i>				
LCD Backwall Display Monitor	\$562	23.9%	336	\$65,695
LED Dynamic Signage	1,405	59.8%	336	164,436
Video Display Extenders	150	6.4%	336	17,550
Digital Video Controller	234	9.9%	336	27,319
Subtotal	\$2,350	100.0%		\$275,000
Less: LED Dyn. Sign.*				(164,436)
Total				\$110,564

* Costs recovered through Terminal cost center charges, not CUTE.

Telecom Charges			
Number of Required Ports	# of Ports	# of Locations	Charge per Location
Gates	1.0	192	\$27,648
Ticket Counters	1.0	322	46,368
Recheck Counters	1.0	14	2,016
CUSS Kiosks	1.0	6	864
Total		534	\$76,896

**Exhibit 2
FY 2021 CUTE Maintenance Expense Allocation**

Ticket Counter (TC) Hour Calculation		FY 2021
# of TC hours per day per unit	[a]	4,095
# of TC positions	[b]	322
# of TC positions w/o BMU	[c]	288
# of days per year	[d]	360
Ticket Counter Hours w/ BMU	[=a*b*d]	475,000
Ticket Counter Hours w/o BMU	[=a*c*d]	425,000

Terminal Cost per Square Foot (from Idg fee model)		
	FY2020	FY 2021
Class I	\$89.88	\$88.75
Class III (for Training Room costs)	\$89.88	\$88.75
Class IV	\$44.94	\$44.38

Class I CUTE Terminal Space Wksht		
	FY2020	FY 2021
Total Class I Space (from Idg fee model)	45,117	45,114
Less Exempt Carrier space:		
LATAM ticket counter space	(1,795)	(1,795)
AA ticket counter space**	(12,154)	(13,128)
CAL ticket counter space**	(909)	(909)
LU ticket counter space**	0	0
DL ticket counter space**	(1,628)	(1,628)
	28,631	27,654

** Reflects Class I ticket counter space noted on carriers's monthly invoice for this line item expense.

Class III CUTE Terminal Space Wksht		
	FY2020	FY 2021
MDAD CUTE Training Room Sq Ft	800	800

Class IV CUTE Terminal Space Wksht		
Central/North Terminal	Carrousel	Square Ft
	41	0
	42	0
United Airlines - Carrousel #42	(42)	0
	43	0
	45	16,167
	46	5,666
	47	4,005
	Interline	7,677
	50	13,967
	51	2,795
	52	3,663
	54	4,053
	60 & 62	2,224
		6,419
Central/North Terminal - Subtotal		66,636
South Terminal		
Terminal J - Outbound Sort Piers		9,724
Terminal H - Outbound Sort Piers		37,068
Concourse H - Charter Carrousel		3,684
South Terminal - Subtotal		50,476
Delta Airlines - Sort Piers		(5,011)
LATAM Airlines Group - Sort Piers		(4,603)
South Terminal - Total		40,862
Total Class 4 BMU sq ft		107,498

Source: MDAD Technical Support Division

Exhibit 3
Total Inventory
CUTE - FY 2021 Projected Budget and Rates

Location	Equipment Location/Quantity											CUTE Back Office (Includes Operations)	Total CUTE Equipment	CUSS Units
	Ticket Counter	Recheck	Gates	BMU (Includes Curbside)	Club America	VIP Lounge	Int'l Baggage	Ticket Counters and Gates Total	Infra-structure Training	Common Use CUTE Total				
Equipment Device														
CPU	322	14	192	13	--	4	--	545	16	561	4	565	6	
Standard Keyboard	361	2	88	--	--	1	--	452	1	453	--	453	--	
Industrial Keyboard	--	--	--	--	--	--	--	--	--	--	--	--	--	
Monitor	382	15	205	13	--	4	--	619	13	632	3	635	7	
Boarding Pass Printer - ATB	353	1	73	--	--	--	--	427	--	427	--	427	--	
Bag Tag Printer - BTP	349	1	19	--	--	--	--	369	--	369	--	369	--	
Boarding Gate Reader - BGR	--	--	95	--	--	--	--	95	--	95	--	95	--	
Document Scanner - MSR	--	--	--	--	--	--	--	--	--	--	--	--	--	
Document Printer - DCP	19	--	65	9	--	2	--	95	3	98	3	101	--	
TOTAL	1,786	33	737	35	--	11	--	2,602	33	2,635	10	2,645	13	

# of O&M Units	Ticket Counter	Recheck	Gates	BMU (Includes Curbside)	Club America	VIP Lounge	Int'l Baggage	Ticket Counters and Gates Total	Infra-structure Training	Common Use CUTE Total	CUTE Back Office (Includes Operations)	Total CUTE Equipment	CUSS Units	Total
CPU	322	14	192	13	--	4	--	545	16	561	4	565	6	571
Standard Keyboard	--	--	--	--	--	--	--	--	--	--	--	--	--	--
Industrial Keyboard	--	--	--	--	--	--	--	--	--	--	--	--	--	--
Monitor	382	15	205	13	--	4	--	619	13	632	3	635	7	642
Boarding Pass Printer - ATB	353	1	73	--	--	--	--	427	--	427	--	427	--	427
Bag Tag Printer - BTP	349	1	19	--	--	--	--	369	--	369	--	369	--	369
Boarding Gate Reader - BGR	--	--	95	--	--	--	--	95	--	95	--	95	--	95
Document Scanner - MSR	--	--	--	--	--	--	--	--	--	--	--	--	--	--
Document Printer - DCP	--	--	--	--	--	--	--	--	--	--	--	--	--	--
TOTAL	1,406	31	584	26	--	8	--	2,055	29	2,084	7	2,091	13	2,104

Note: O&M units are a subset of total inventory; they reflect the items maintained by the service contractor as part of its contract with MDAD.

1. Sources:

- Ticket Counters and Rechecks - Resource Manager MDAD Properties Inventory
- Gates, BMU, Club America, VIP, Int'l Baggage, Training - MDAD/SITA list
- Backoffice - MDAD IT Department

Exhibit 4
Miami International Airport
FY2021 CUSS RATES
CUSS RATES - EFFECTIVE OCTOBER 2020

Pricing Category		Total Cost	# of Units	Per Unit Expense	Annual Amortization Cost (1)	Annual Per Unit	Monthly Per Unit
						[a]	[a] ÷ 12
Capital Costs--CUSS UNIT (Hardware/Software)							
In Ticket Counter	[b]	\$0	36	\$0.00	\$0.00	\$0.00	\$0.00
Stand Alone	[c]	\$0	26	\$0.00	\$0.00	\$0.00	\$0.00
Class I Terminal Rental Costs - Stand Alone (2)	[d]			\$532.50	n/a	\$532.50	\$44.38
Current Expense Allocation (O&M Costs) (3)	[e]	\$27,368	62	\$441.42	n/a	\$441.42	\$36.78
Telecom Port Charge						\$144.00	\$12.00
TOTAL COSTS - In Ticket Counter	[b+e]					\$441.42	\$48.78
TOTAL COSTS - Stand Alone	[c+d+e]					\$973.92	\$93.16

n/a = not applicable

(1) Amortization charge based upon useful life of 3 yrs @ 6%.

(2) Applies to Stand Alone units only. Each Stand Alone unit includes 6 square feet of Class I space multiplied by the current Class I terminal rental rate.

For FY2020 Class I terminal rental rate per square foot = **\$88.75**

(3) Current Expense amount is based on CUSS's allocation of the annual contract with SITA.

Exhibit 5
CUTE Backwall Display Charges
FY 2021

Backwall Maximum Charge Calculation
--

Backwall Display O&M costs	\$110,564
Ticket Counter Hours	475,000
Backwall Hourly Rate	\$0.23
Hours per Day	12
Days per Month	30
Positions per Display	2
Monthly Max. Backwall Charge - (CUTE Position)	\$40.00
Annual Backwall Charge per Position (Monthly Max. x 12 mo.)	\$480.00
Annual Backwall Charge per Display (Monthly Max. x 2 x 12 mo.)	\$960.00

APPENDIX C



MIAMI INTERNATIONAL AIRPORT - TRAFFIC REPORT

FISCAL YEAR ENDED: SEPTEMBER 30, 2020

INTERNATIONAL*	DEPLANED	ENPLANED	TOTAL	FISCAL YEAR 10/18 - 09/19	% CHG OVR 10/18 - 09/19
PASSENGERS	5,566,439	5,473,927	11,040,366	22,451,721	-50.83
FREIGHT-TONS	1,093,188	772,811	1,865,999	1,917,714	-2.70
MAIL-TONS	5,839	6,818	12,658	11,958	5.85
TOTAL CARGO-TONS	1,099,027	779,629	1,878,656	1,929,673	-2.64
COMMERCIAL AIRCRAFT MVMT	63,740	59,506	123,246	193,596	-36.34
LANDED WEIGHT (1,000 LBS)			16,135,051	23,147,790	-30.30
ARRIVING PASSENGERS & CREW REQUIRING FEDERAL INSP.			5,083,350	11,483,106	-55.73
SEATS	7,136,267	6,847,680	13,983,947	26,906,718	-48.03

DOMESTIC **	DEPLANED	ENPLANED	TOTAL	FISCAL YEAR 10/18 - 09/19	% CHG OVR 10/18 - 09/19
PASSENGERS	7,166,336	7,175,682	14,342,018	23,359,862	-38.60
FREIGHT-TONS	229,413	173,237	402,650	391,513	2.84
MAIL-TONS	11,175	8,569	19,744	25,055	-21.20
TOTAL CARGO-TONS	240,588	181,806	422,395	416,568	1.40
COMMERCIAL AIRCRAFT MVMT	80,849	84,659	165,508	221,436	-25.26
LANDED WEIGHT (1,000 LBS)			11,546,694	14,710,443	-21.51
SEATS	9,221,639	9,500,605	18,722,244	25,081,209	-25.35

COMBINED TOTALS	DEPLANED	ENPLANED	TOTAL	FISCAL YEAR 10/18 - 09/19	% CHG OVR 10/18 - 09/19
PASSENGERS	12,732,775	12,649,609	25,382,384	45,811,583	-44.59
FREIGHT-TONS	1,322,601	946,048	2,268,649	2,309,227	-1.76
MAIL-TONS	17,014	15,388	32,402	37,013	-12.46
TOTAL CARGO-TONS	1,339,616	961,435	2,301,051	2,346,241	-1.93
COMMERCIAL AIRCRAFT MVMT	144,589	144,165	288,754	415,032	-30.43
LANDED WEIGHT (1,000 LBS)			27,681,745	37,858,233	-26.88
SEATS	16,357,906	16,348,285	32,706,191	51,987,927	-37.09

AIRCRAFT OPERATIONS (LANDINGS PLUS TAKEOFFS) FAA TOWER DATA

AIR CARRIER	247,460				
AIR TAXI	31,701				
GENERAL AVIATION	10,781			FISCAL YEAR	% CHG OVR
MILITARY	536			10/18 - 09/19	10/18 - 09/19
TOTAL	290,478			417,747	-30.47

FREIGHT = FREIGHT PLUS EXPRESS. TOTAL CARGO = FREIGHT PLUS MAIL

*TO AND FROM POINTS OUTSIDE U.S. JURISDICTION

**TO AND FROM POINTS WITHIN U.S. JURISDICTION

MIAMI-DADE AVIATION DEPARTMENT: P.O.BOX 526624, MIAMI, FL. 33152



MIAMI-DADE AVIATION DEPARTMENT
 Finance and Strategy Group : Financial Planning and Performance Analysis Division
 P.O. Box 526624 • Miami - Florida 33152-6624
www.miami-airport.com

